

Public Outreach

Tiffany Foster
Natural Resource Planning and Programs



TVA Public Outreach

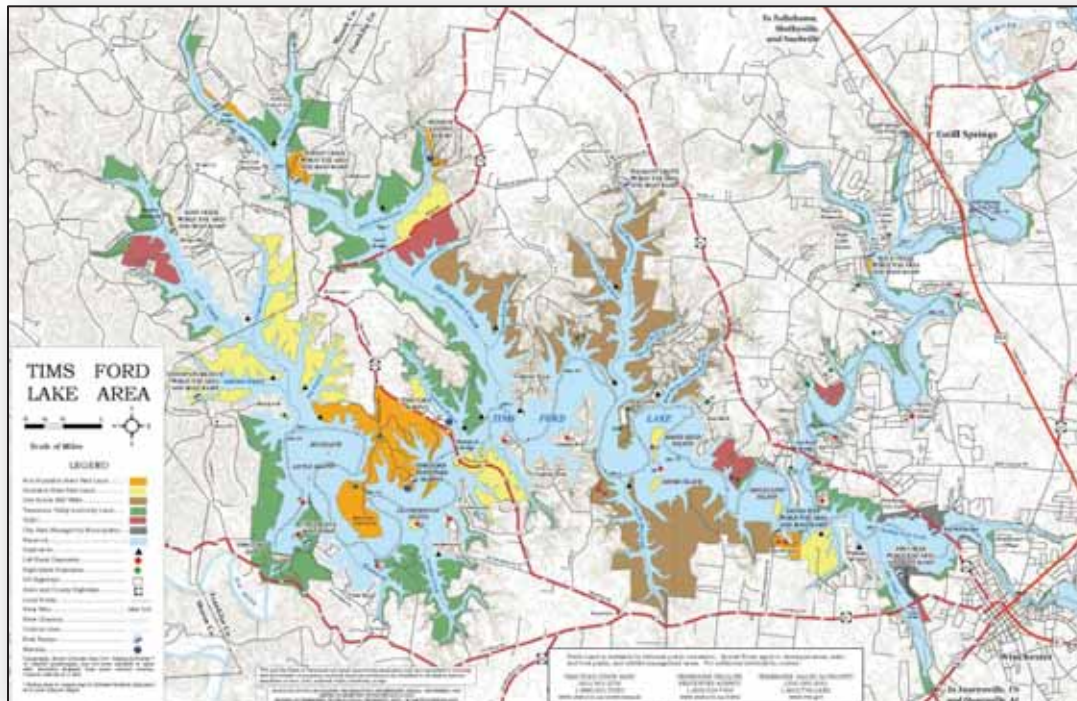
- ◆ Work with partners to increase awareness and appreciation of cultural and natural resources
- ◆ Improve the understanding of the role all can play in caring for the resources
- ◆ Increase participation in stewardship activities and encourage outdoor recreation
- ◆ Grow interest in cultural and natural resources and science-related fields



TVA Tims Ford Blueway

Collaborative project with state and local partners

- ◆ Improving recreational opportunities
- ◆ Highlighting resource features



Collaborative project with over 70 partners

- ◆ Promoting tourism that sustains and/or enriches the region
- ◆ National Geographic Society Map Division expertise matched with a stakeholder driven process



TVA Interpretive Areas on TVA Lands

- ◆ Enhance the user experience when visiting TVA public lands



- ◆ Tools
 - Interpretive kiosks and signs
 - Mobile apps
 - Audio recordings
 - Web-based modules
 - Hands-on activities

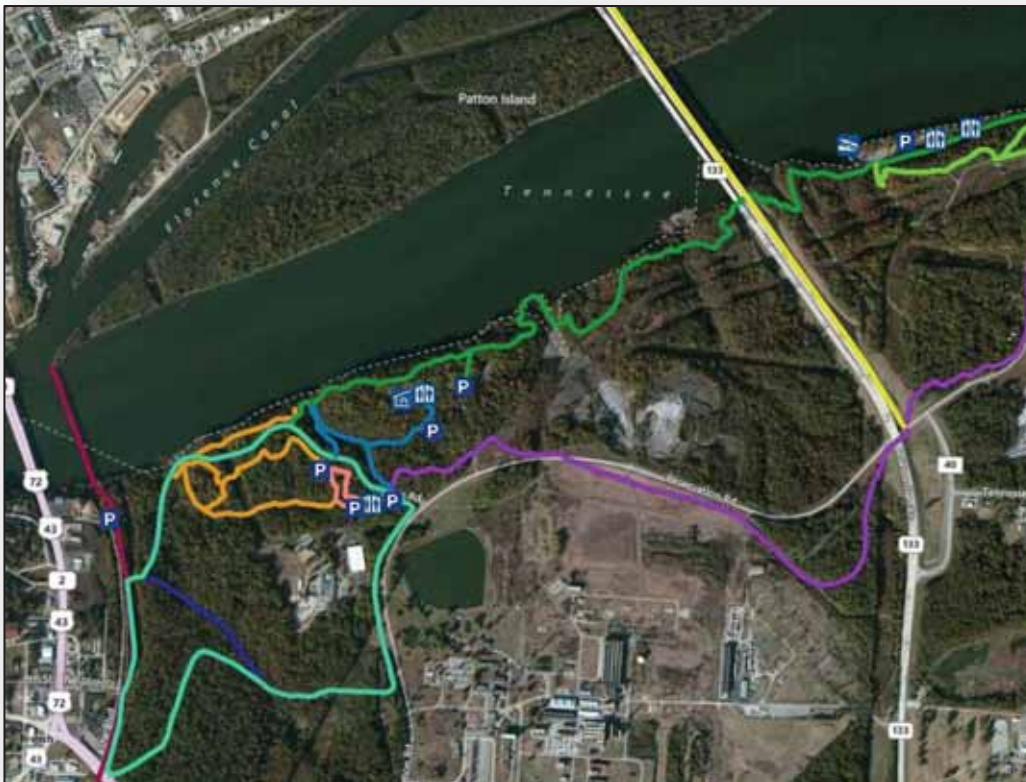


TVA Interpretive Area Features To Highlight



TVA Muscle Shoals Interpretive Area

Improve the user experience by upgrading trails, facilities, and creating self-guided interpretive trails



Cultural resources

- ◆ Prehistory, Civil War, Civilian Conservation Corps projects, and TVA history
 - Oral histories, kiosks, and interpretive signs



Features built by the Civil Conservation Corps



- Trails, drainage networks, foot bridges, observation decks, a pavilion, and a dance hall



Natural resource features

- ◆ Natural Area, water, wildlife habitat, wildflowers
 - Audio recordings of bats and birds
 - Self-guided wildflower walks



TVA Muscle Shoals Interpretive Area

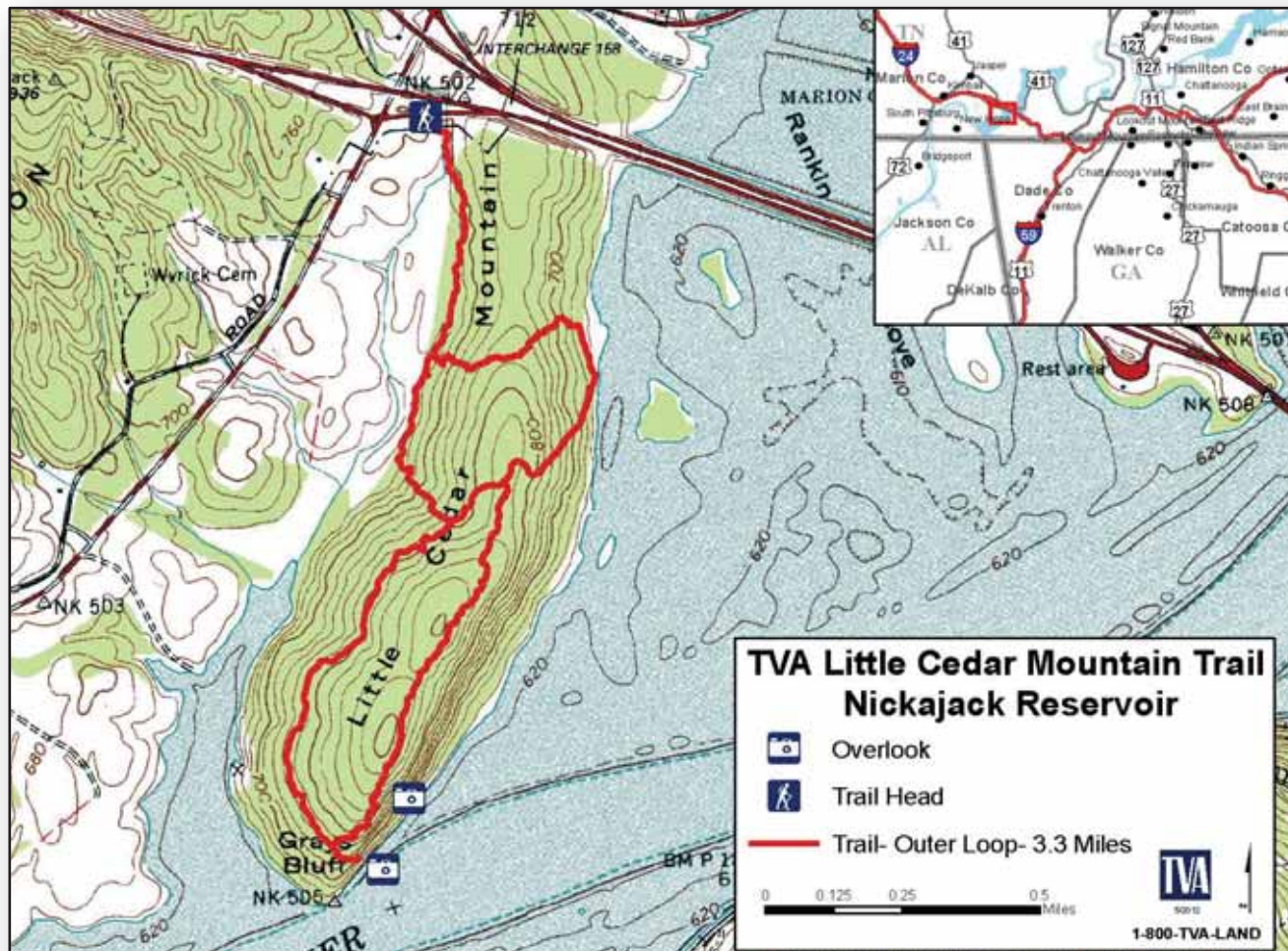
Approach

- ◆ Gather information and ideas from community and partners
- ◆ Draft plan
- ◆ Host an open house to receive more public input
- ◆ Finalize and implement plan
- ◆ Host grand opening celebration with the community



Natural area located about 30 miles from Chattanooga

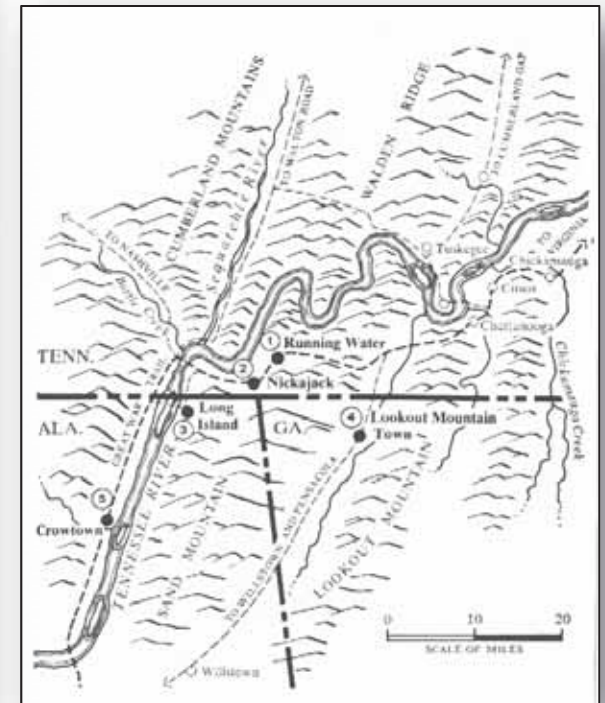
- ◆ Existing trail network



TVA Little Cedar Mountain Interpretive Area

Cultural resources

- ◆ Prehistory and history
 - Oral histories and interpretive signs



TVA Little Cedar Mountain Interpretive Area



TVA Potential and Current Outreach Projects

