



Gallatin Fossil Plant Update

Joe Hoagland
June 13, 2019

Gallatin Fossil Plant

Commissioning Date:

1956-1959

Size of facility:

1,950 acres

Coal Combustion Residual (CCR):

13,767,000 cubic yards

Output:

976 Megawatts

Number of homes powered:

565,000

CCR Units Closed:

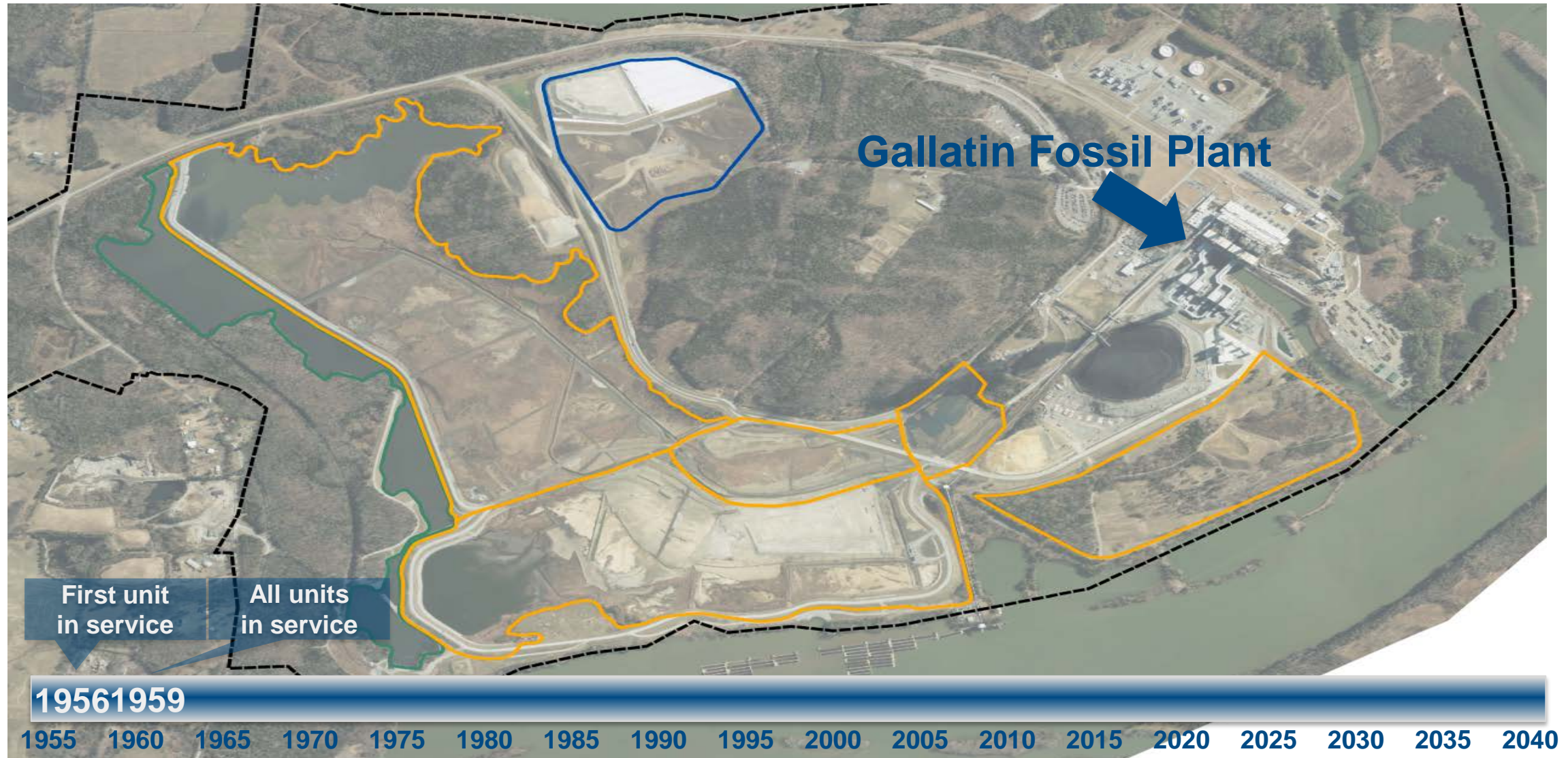
70 acres

CCR Units To Be Closed:

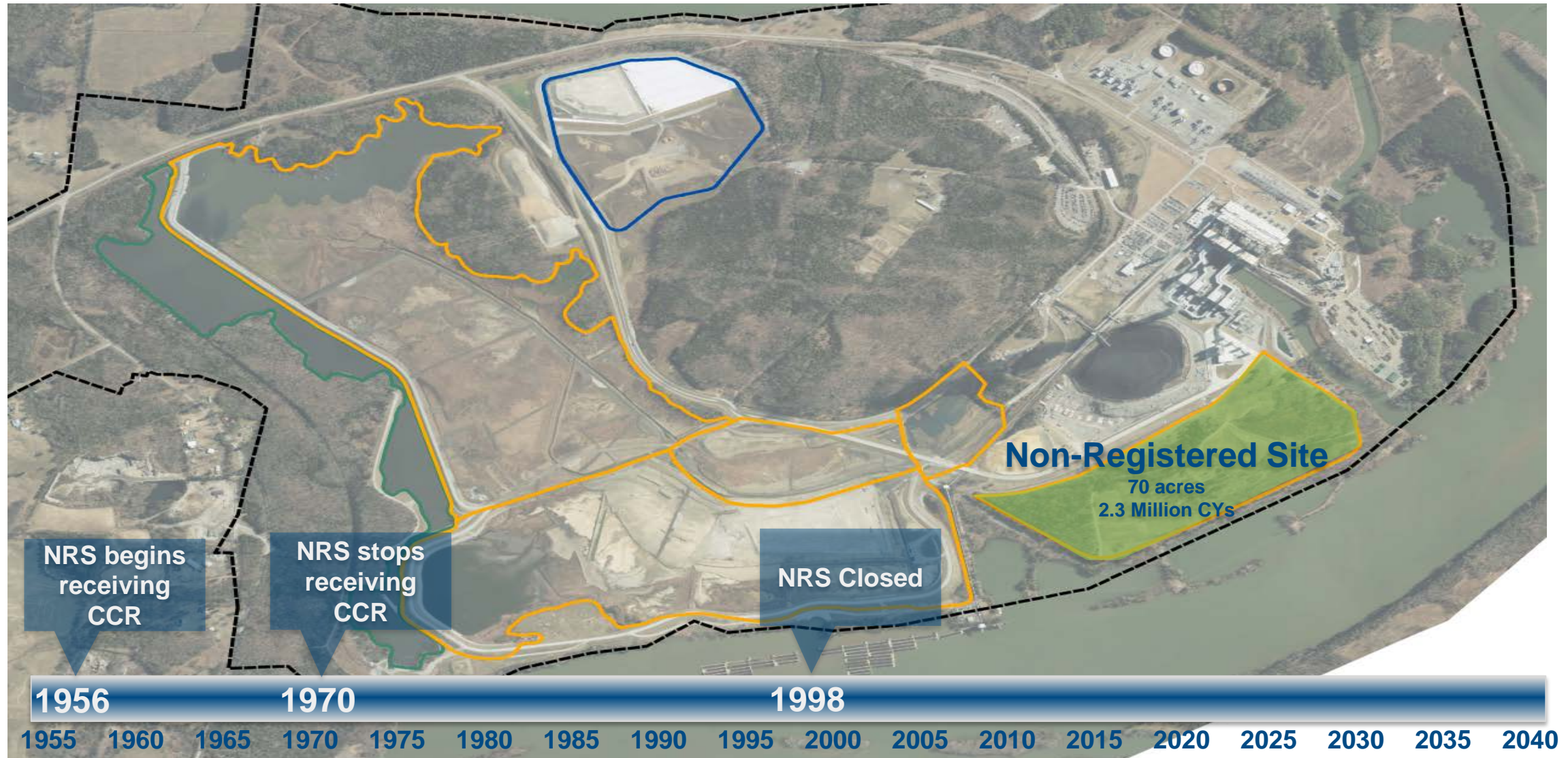
435



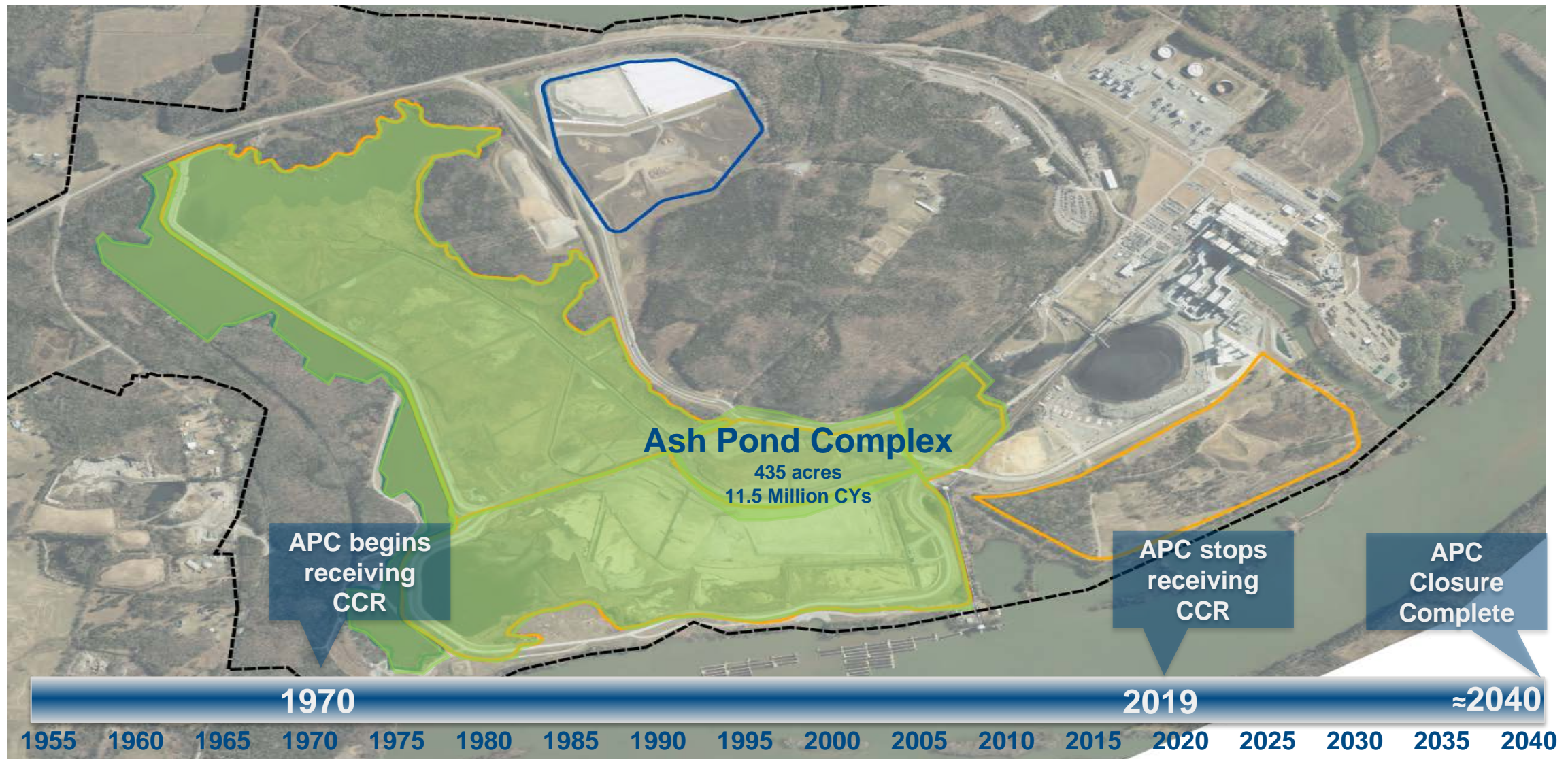
Gallatin Environmental Stewardship



Gallatin Environmental Stewardship



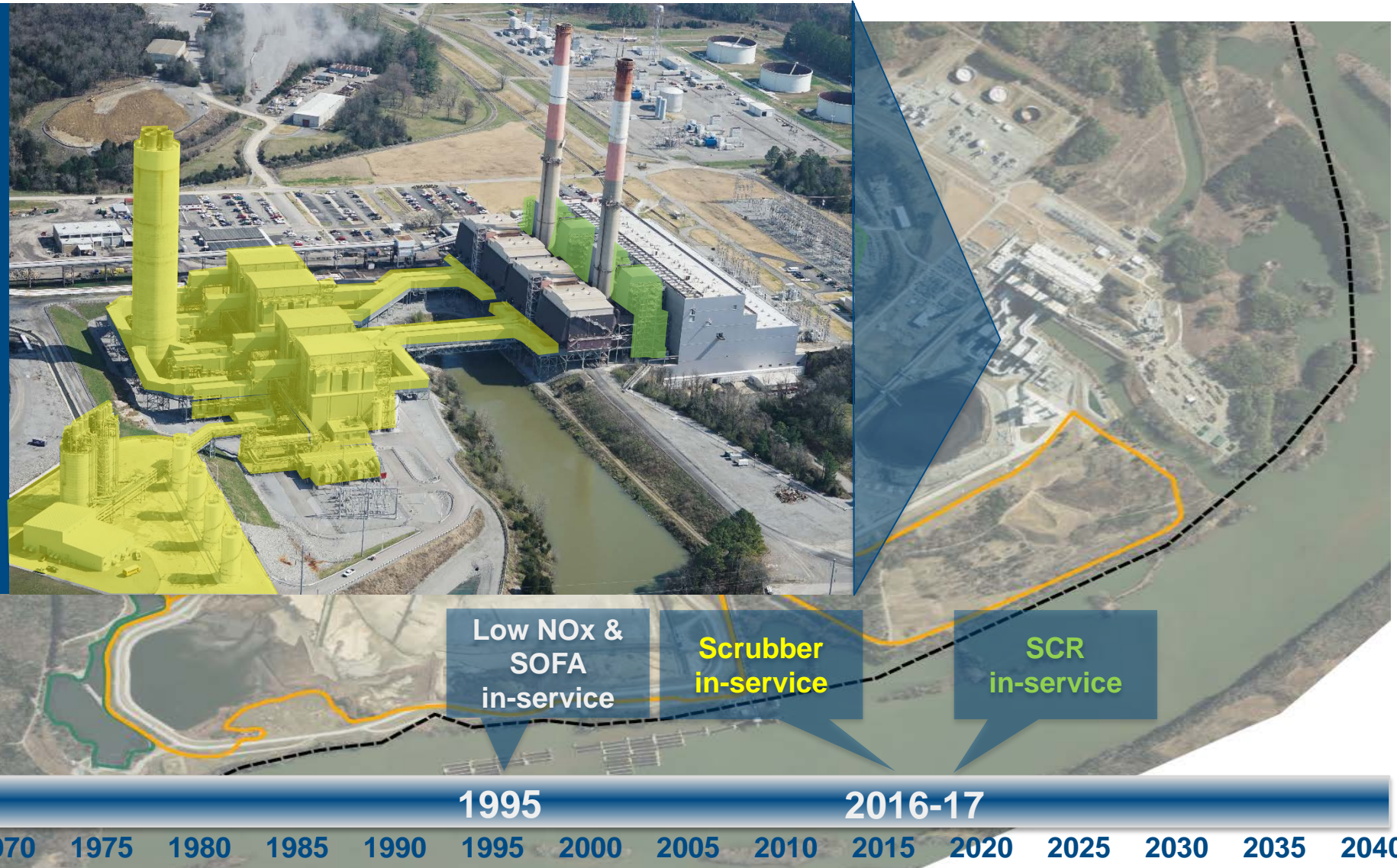
Gallatin Environmental Stewardship



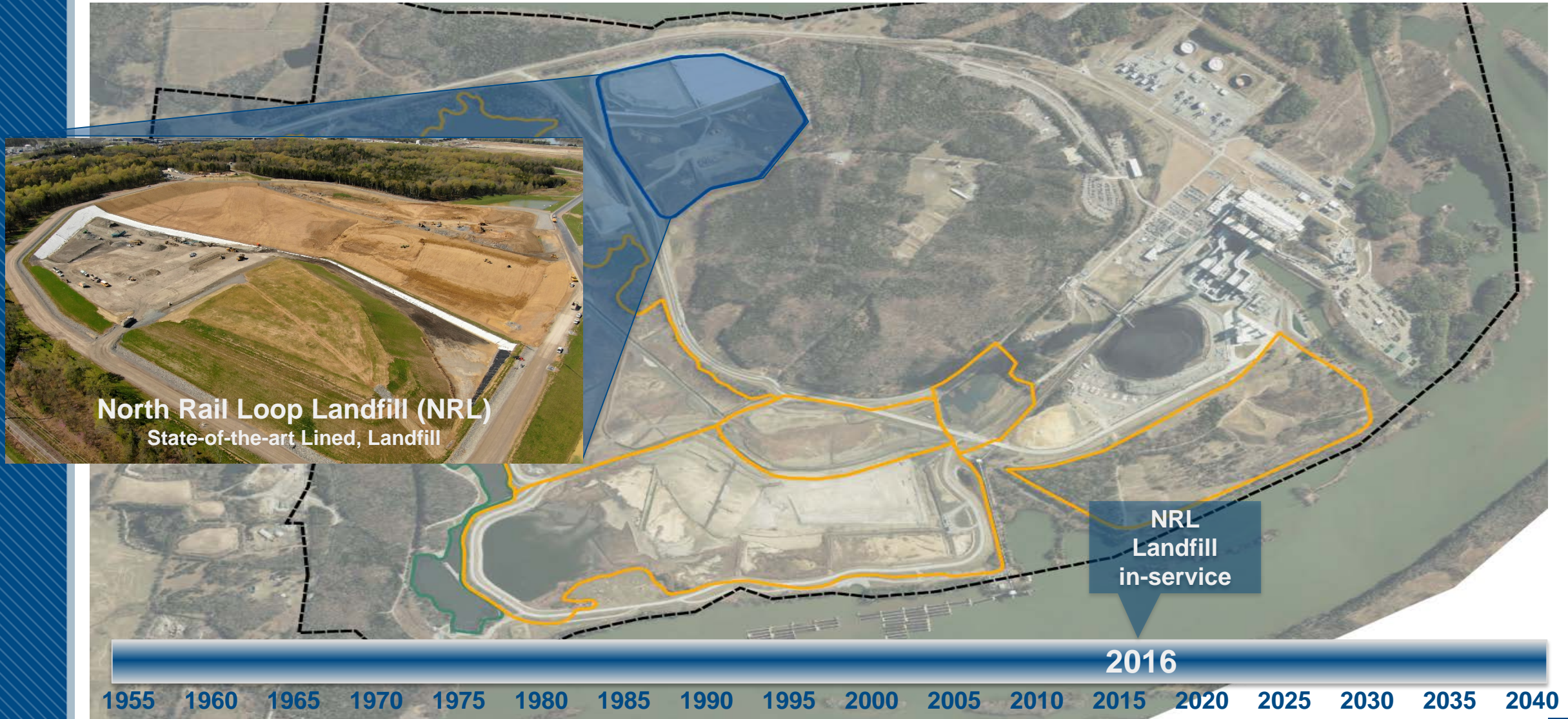
Gallatin Environmental Stewardship

Air Quality Improvements

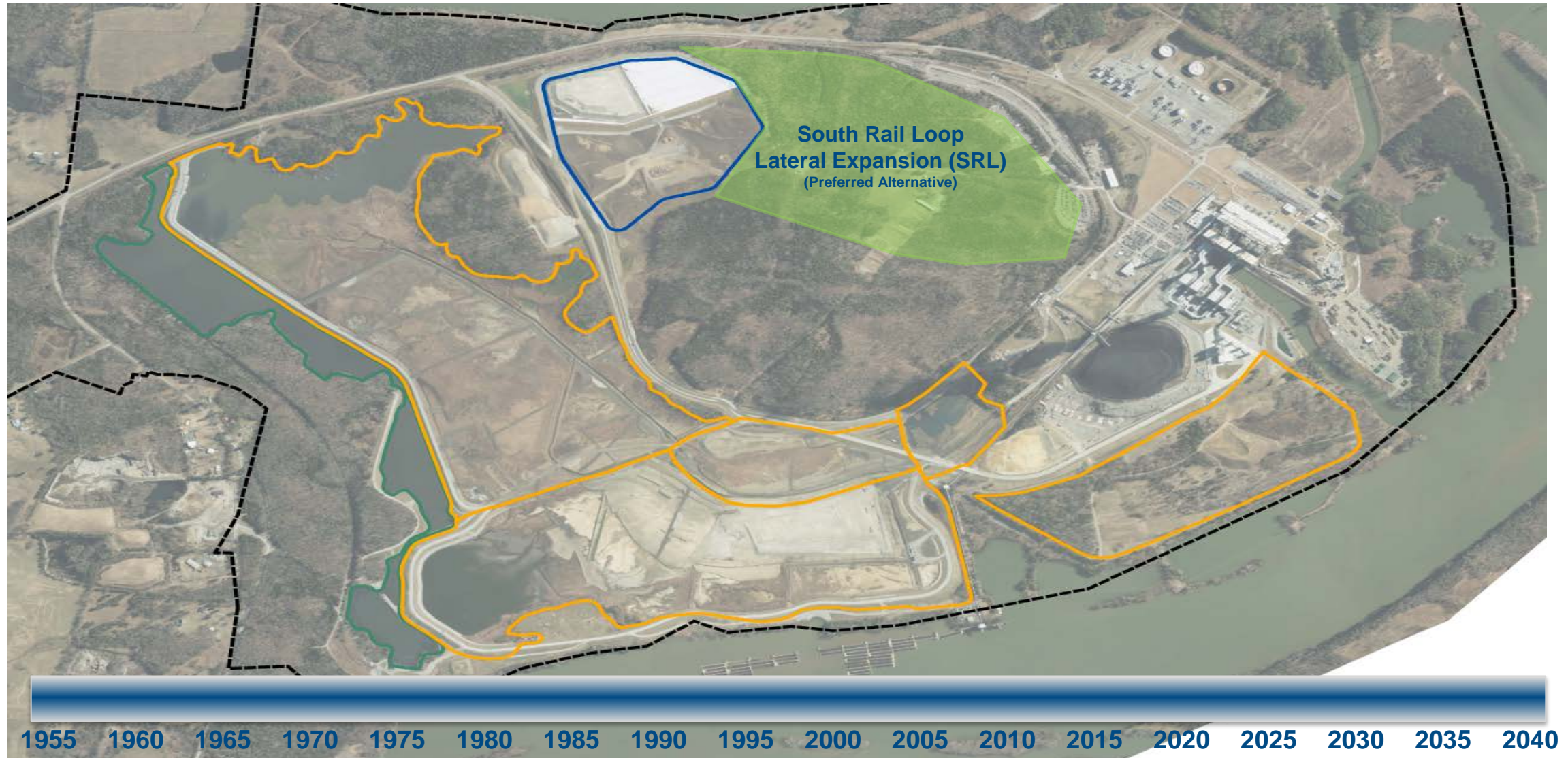
- Low Nitrogen Oxide (NO_x) Burners
- Super Overfired Air (SOFA)
- Scrubber
 - Sulfur Dioxide (SO_2)
 - Mercury
- Selective Catalytic Reduction (SCR)
 - NO_x



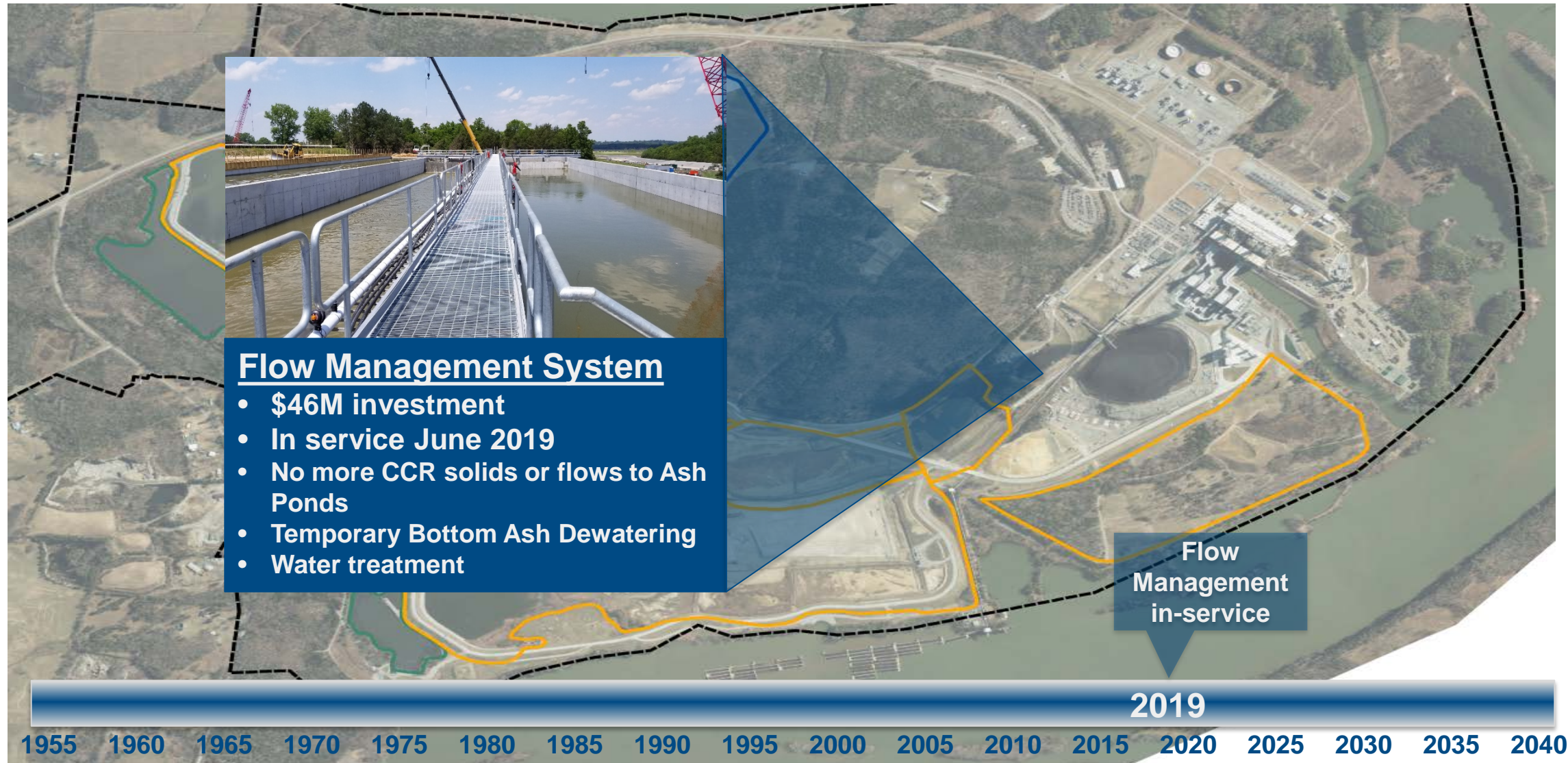
Gallatin Environmental Stewardship



Gallatin Environmental Stewardship



Gallatin Environmental Stewardship

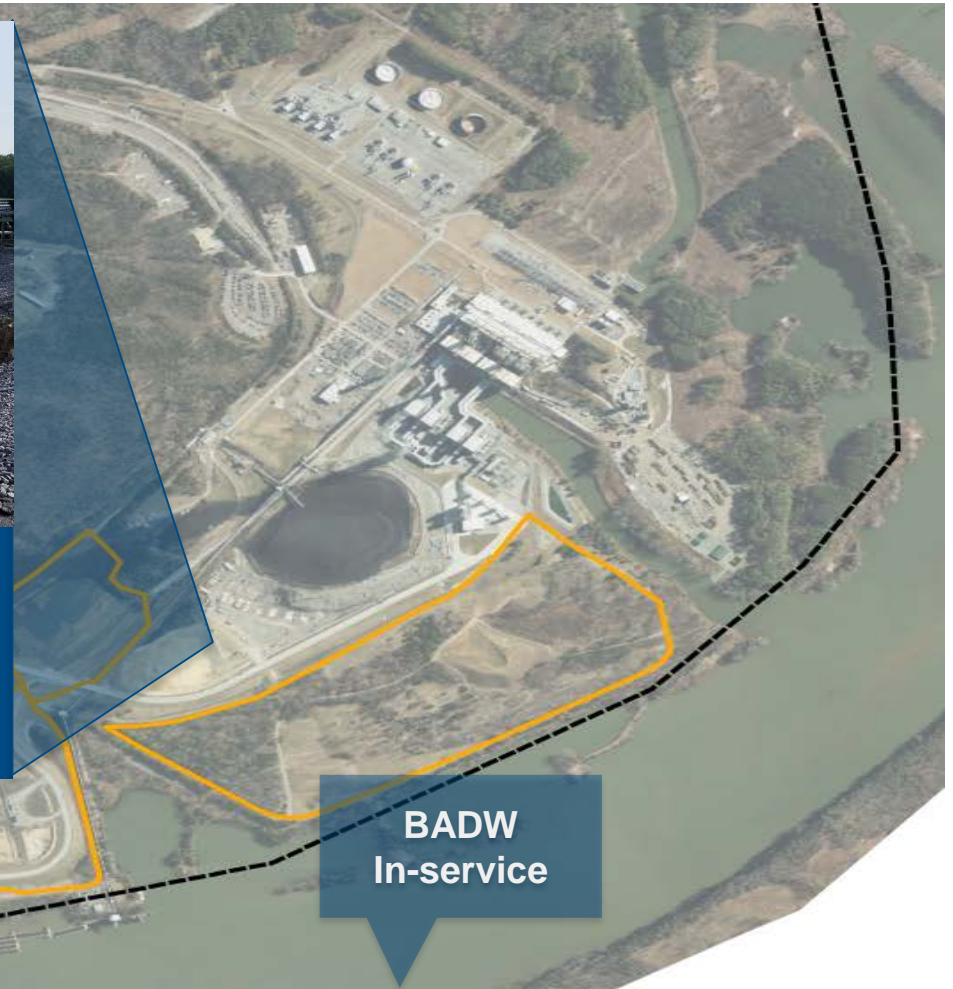


Gallatin Environmental Stewardship



Bottom Ash Dewatering

- In-service Fall 2019
- \$75M investment
- Final step in dry ash conversion

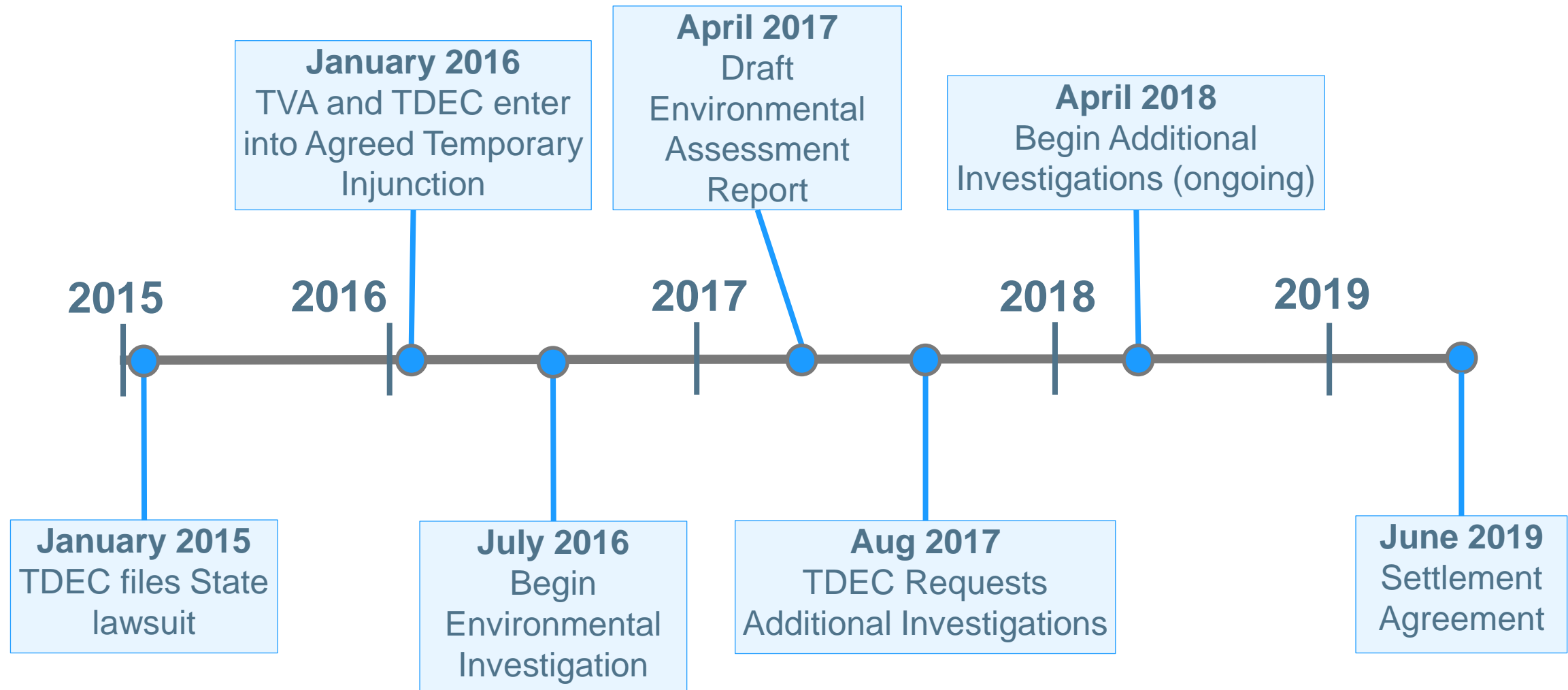


BADW
In-service

2019

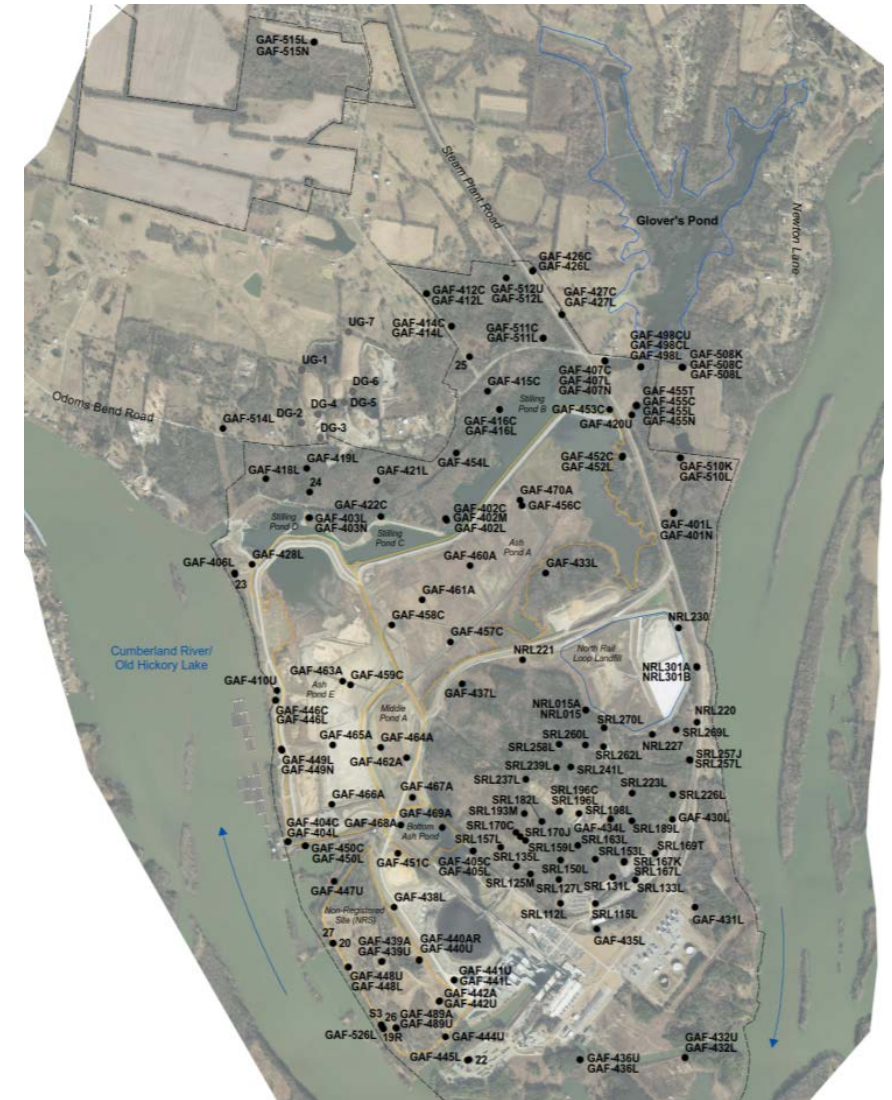
1955 1960 1965 1970 1975 1980 1985 1990 1995 2000 2005 2010 2015 2020 2025 2030 2035 2040

Environmental Investigation Timeline



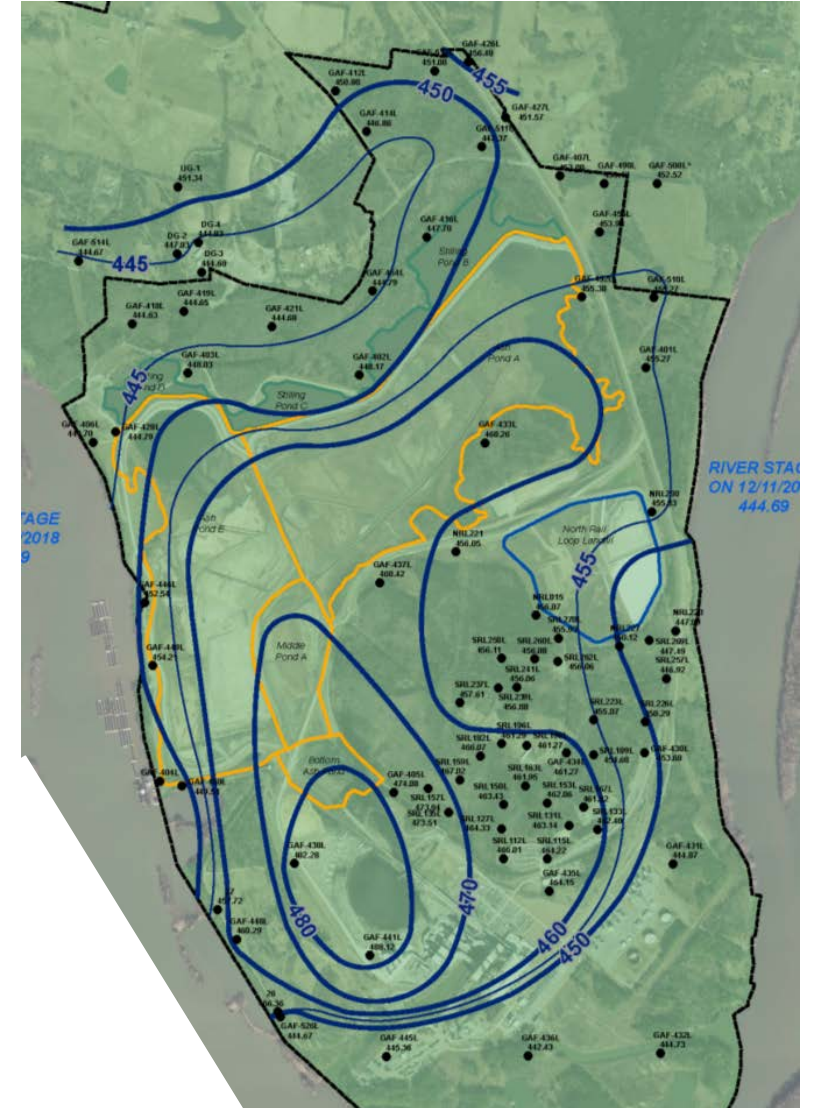
Environmental Investigation

- Geology and groundwater
- Residential wells
- Soils & coal ash
- Cumberland River
 - Sediment
 - Water
 - Aquatic life
- 100+ wells on-site and off-site
- Represents \$25M+ investment and 100,000+ consultant man-hours



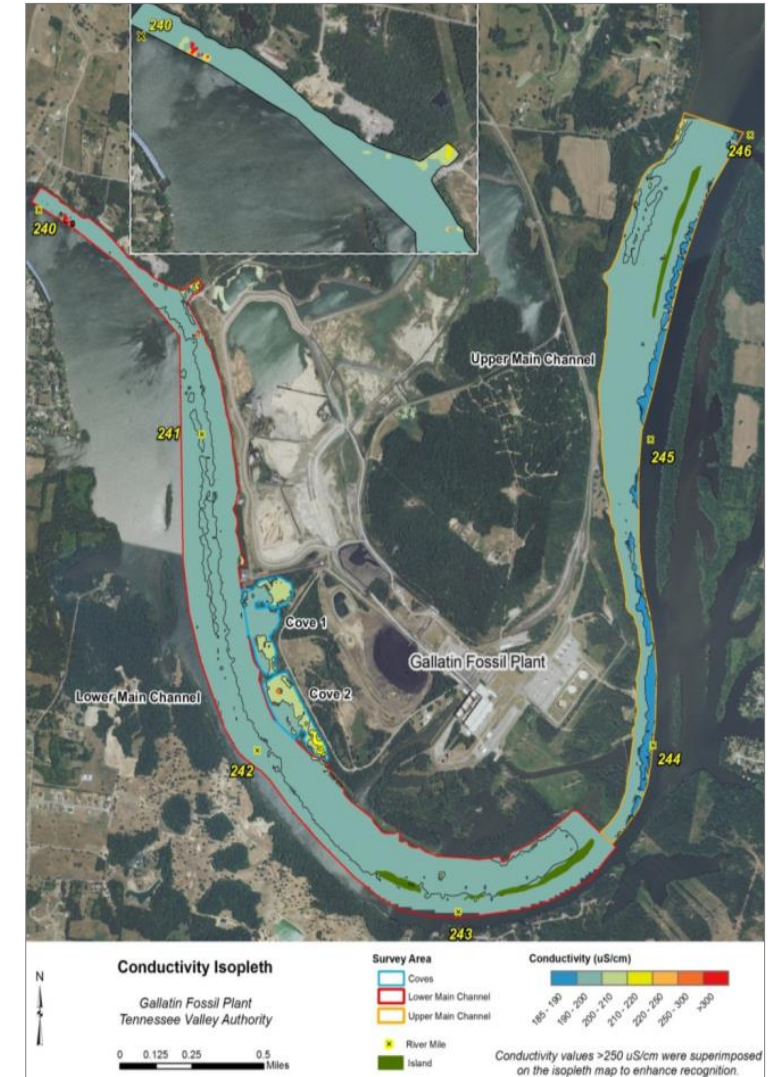
Groundwater

- Little potential for groundwater from GAF to flow north to off-site properties
- Residential well sampling found no exceedances of drinking water standards

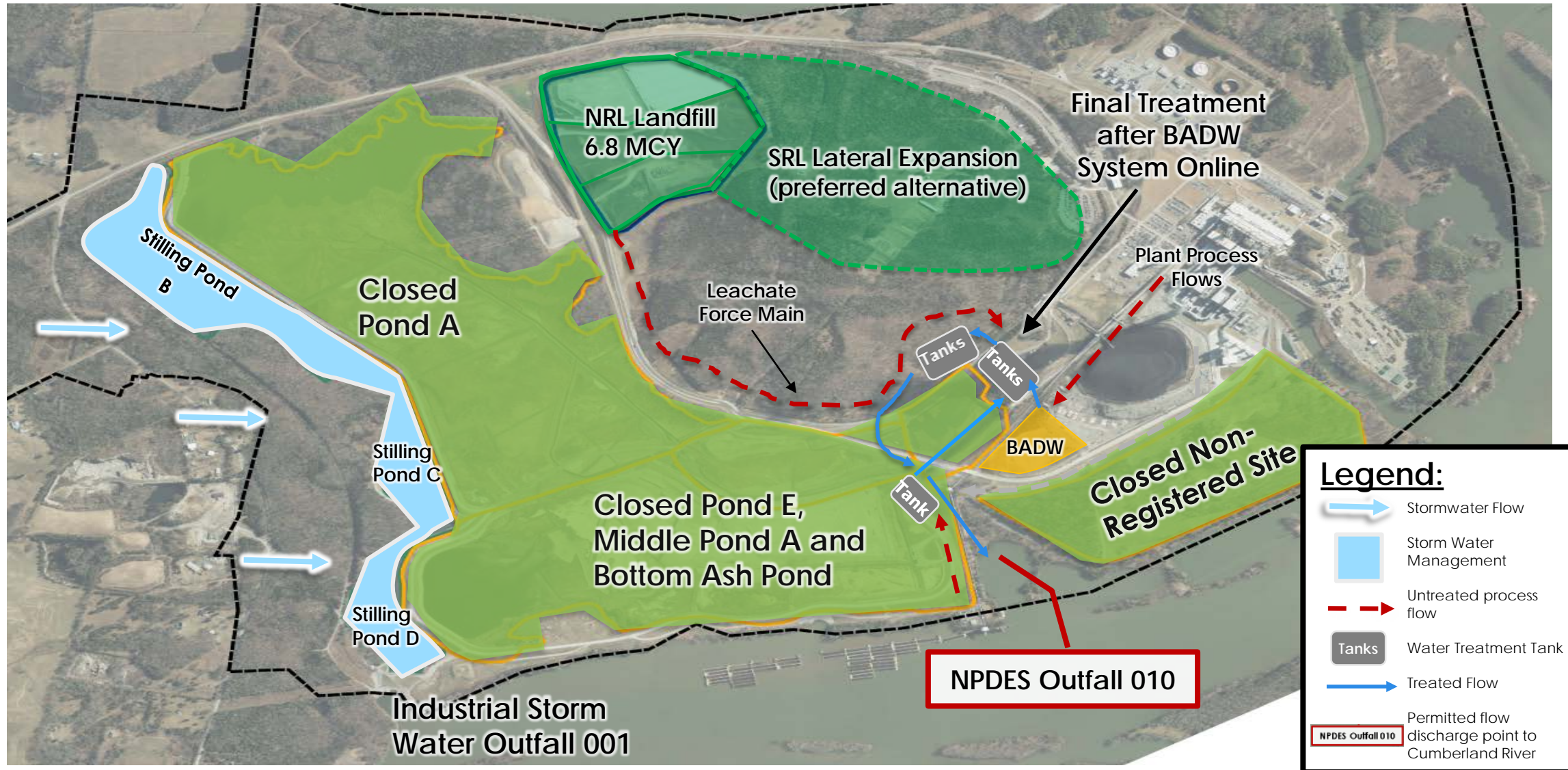


The Cumberland River is Healthy

- Meets water quality criteria for:
 - Water supply
 - Public recreation and fishing
- Sampling since 2002, including investigation, indicates the river is in good health upstream and downstream
- Per the Gallatin Public Utilities 2018 Water Quality Report, water “meets or exceeds all water quality standards, as established by State and Federal regulatory agencies”



Expected Final Condition



For More Information

Gallatin Fossil Plant

<https://www.tva.gov/Energy/Our-Power-System/Coal/Gallatin-Fossil-Plant>

Air Quality – Water Quality – Ash Storage

<https://www.tva.gov/Environment/Environmental-Stewardship/Air-Quality/Gallatin-Fossil-Plant-Emissions>

Groundwater Monitoring

www.tva.com/ccr

Gallatin Public Utilities Water Quality

www.gallatinutilities.com/waterquality.html

