

SURVEY CONTROL NOTE:

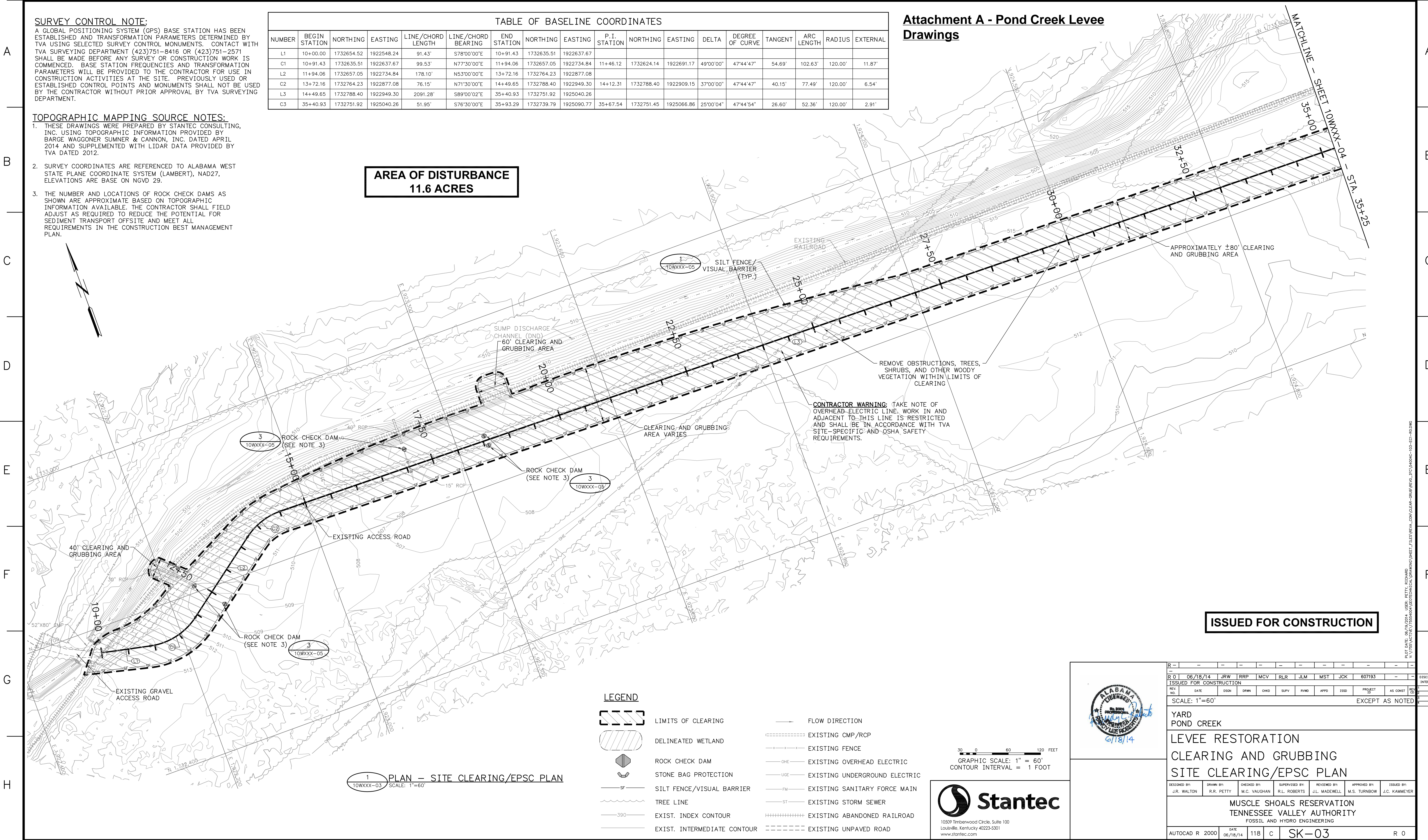
A GLOBAL POSITIONING SYSTEM (GPS) BASE STATION HAS BEEN ESTABLISHED AND TRANSFORMATION PARAMETERS DETERMINED BY TVA USING SELECTED SURVEY CONTROL MONUMENTS. CONTACT WITH TVA SURVEYING DEPARTMENT (423)751-8416 OR (423)751-2571 SHALL BE MADE BEFORE ANY SURVEY OR CONSTRUCTION WORK IS COMMENCED. BASE STATION FREQUENCIES AND TRANSFORMATION PARAMETERS WILL BE PROVIDED TO THE CONTRACTOR FOR USE IN CONSTRUCTION ACTIVITIES AT THE SITE. PREVIOUSLY USED OR ESTABLISHED CONTROL POINTS AND MONUMENTS SHALL NOT BE USED BY THE CONTRACTOR WITHOUT PRIOR APPROVAL BY TVA SURVEYING DEPARTMENT.

TOPOGRAPHIC MAPPING SOURCE NOTES:

1. THESE DRAWINGS WERE PREPARED BY STANTEC CONSULTING, INC. USING TOPOGRAPHIC INFORMATION PROVIDED BY BARGE WAGGONER SUMNER & CANNON, INC. DATED APRIL 2014 AND SUPPLEMENTED WITH LIDAR DATA PROVIDED BY TVA DATED 2012.
2. SURVEY COORDINATES ARE REFERENCED TO ALABAMA WEST STATE PLANE COORDINATE SYSTEM (LAMBERT), NAD27, ELEVATIONS ARE BASE ON NGVD 29.
3. THE NUMBER AND LOCATIONS OF ROCK CHECK DAMS AS SHOWN ARE APPROXIMATE BASED ON TOPOGRAPHIC INFORMATION AVAILABLE. THE CONTRACTOR SHALL FIELD ADJUST AS REQUIRED TO REDUCE THE POTENTIAL FOR SEDIMENT TRANSPORT OFFSITE AND MEET ALL REQUIREMENTS IN THE CONSTRUCTION BEST MANAGEMENT PLAN.

TABLE OF BASELINE COORDINATES																	
NUMBER	BEGIN STATION	NORTHING	EASTING	LINE/CHORD LENGTH	LINE/CHORD BEARING	END STATION	NORTHING	EASTING	P.I. STATION	NORTHING	EASTING	DELTA	DEGREE OF CURVE	TANGENT	ARC LENGTH	RADIUS	EXTERNAL
L1	10+00.00	1732654.52	1922548.24	91.43'	S78°00'00"E	10+91.43	1732635.51	1922637.67									
C1	10+91.43	1732635.51	1922637.67	99.53'	N77°30'00"E	11+94.06	1732657.05	1922734.84	11+46.12	1732624.14	1922691.17	49°00'00"	47°44'47"	54.69'	102.63'	120.00'	11.87'
L2	11+94.06	1732657.05	1922734.84	178.10'	N53°00'00"E	13+72.16	1732764.23	1922877.08									
C2	13+72.16	1732764.23	1922877.08	76.15'	N71°30'00"E	14+49.65	1732788.40	1922949.30	14+12.31	1732788.40	1922909.15	37°00'00"	47°44'47"	40.15'	77.49'	120.00'	6.54'
L3	14+49.65	1732788.40	1922949.30	2091.28'	S89°00'02"E	35+40.93	1732751.92	1925040.26									
C3	35+40.93	1732751.92	1925040.26	51.95'	S76°30'00"E	35+93.29	1732739.79	1925090.77	35+67.54	1732751.45	1925066.86	25°00'04"	47°44'54"	26.60'	52.36'	120.00'	2.91'

Attachment A - Pond Creek Levee Drawings



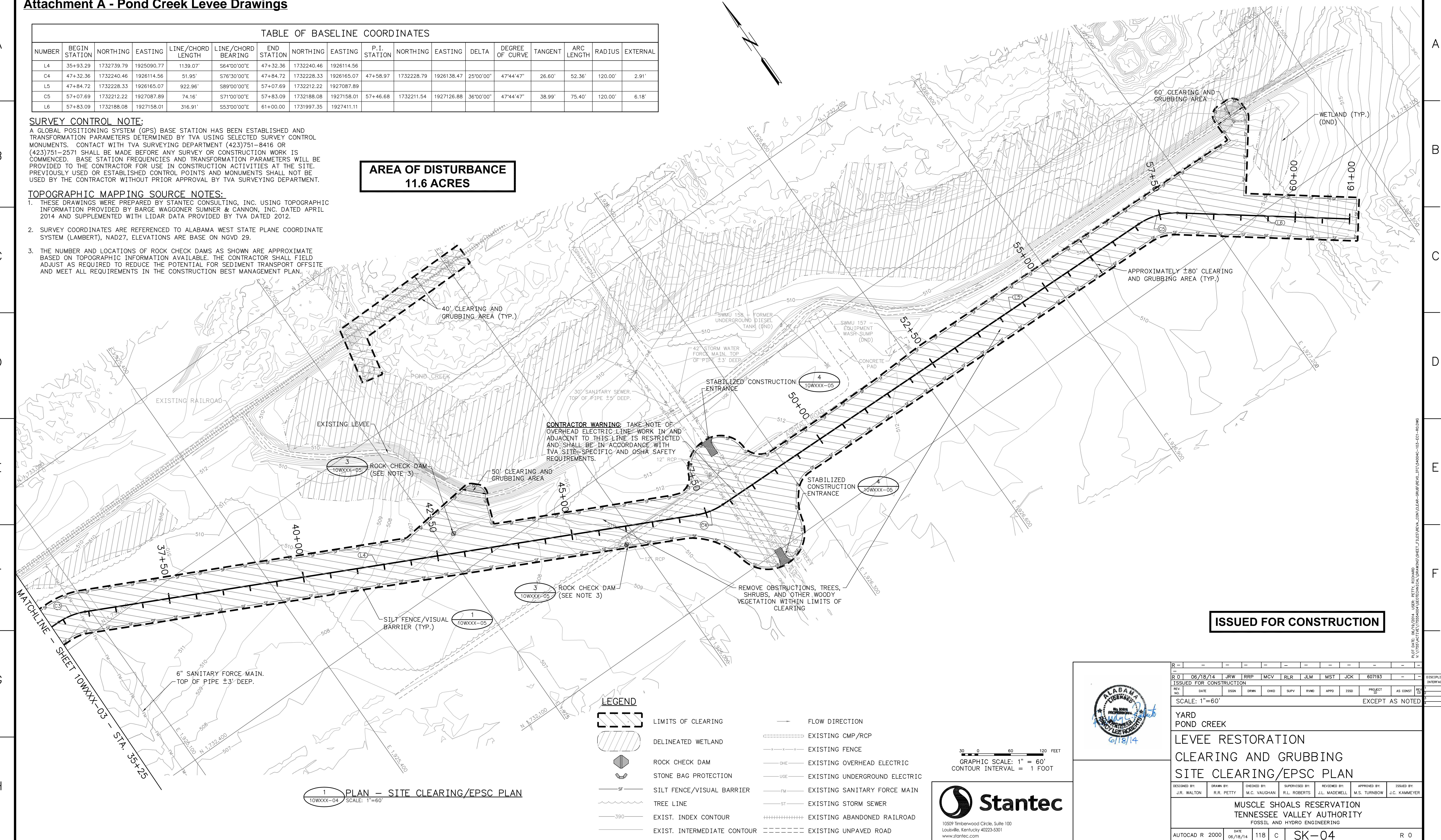
Attachment A - Pond Creek Levee Drawings

TABLE OF BASELINE COORDINATES																	
NUMBER	BEGIN STATION	NORTHING	EASTING	LINE/CHORD LENGTH	LINE/CHORD BEARING	END STATION	NORTHING	EASTING	P.I. STATION	NORTHING	EASTING	DELTA	DEGREE OF CURVE	TANGENT	ARC LENGTH	RADIUS	EXTERNAL
L4	35+93.29	1732739.79	1925090.77	1139.07'	S64°00'00"E	47+32.36	1732240.46	1926114.56									
C4	47+32.36	1732240.46	1926114.56	51.95'	S76°30'00"E	47+84.72	1732228.33	1926165.07	47+58.97	1732228.79	1926138.47	25°00'00"	47°44'47"	26.60'	52.36'	120.00'	2.91'
L5	47+84.72	1732228.33	1926165.07	922.96'	S89°00'00"E	57+07.69	1732212.22	1927087.89									
C5	57+07.69	1732212.22	1927087.89	74.16'	S71°00'00"E	57+83.09	1732188.08	1927158.01	57+46.68	1732211.54	1927126.88	36°00'00"	47°44'47"	38.99'	75.40'	120.00'	6.18'
L6	57+83.09	1732188.08	1927158.01	316.91'	S53°00'00"E	61+00.00	1731997.35	1927411.11									

SURVEY CONTROL NOTE:
A GLOBAL POSITIONING SYSTEM (GPS) BASE STATION HAS BEEN ESTABLISHED AND TRANSFORMATION PARAMETERS DETERMINED BY TVA USING SELECTED SURVEY CONTROL MONUMENTS. CONTACT WITH TVA SURVEYING DEPARTMENT (423)751-8416 OR (423)751-2571 SHALL BE MADE BEFORE ANY SURVEY OR CONSTRUCTION WORK IS COMMENCED. BASE STATION FREQUENCIES AND TRANSFORMATION PARAMETERS WILL BE PROVIDED TO THE CONTRACTOR FOR USE IN CONSTRUCTION ACTIVITIES AT THE SITE. PREVIOUSLY USED OR ESTABLISHED CONTROL POINTS AND MONUMENTS SHALL NOT BE USED BY THE CONTRACTOR WITHOUT PRIOR APPROVAL BY TVA SURVEYING DEPARTMENT.

TOPOGRAPHIC MAPPING SOURCE NOTES:
1. THESE DRAWINGS WERE PREPARED BY STANTEC CONSULTING, INC. USING TOPOGRAPHIC INFORMATION PROVIDED BY BARGE WAGGONER SUMNER & CANNON, INC. DATED APRIL 2014 AND SUPPLEMENTED WITH LIDAR DATA PROVIDED BY TVA DATED 2012.
2. SURVEY COORDINATES ARE REFERENCED TO ALABAMA WEST STATE PLANE COORDINATE SYSTEM (LAMBERT), NAD27, ELEVATIONS ARE BASE ON NGVD 29.
3. THE NUMBER AND LOCATIONS OF ROCK CHECK DAMS AS SHOWN ARE APPROXIMATE BASED ON TOPOGRAPHIC INFORMATION AVAILABLE. THE CONTRACTOR SHALL FIELD ADJUST AS REQUIRED TO REDUCE THE POTENTIAL FOR SEDIMENT TRANSPORT OFFSITE AND MEET ALL REQUIREMENTS IN THE CONSTRUCTION BEST MANAGEMENT PLAN.

AREA OF DISTURBANCE
11.6 ACRES



LEGEND

LIMITS OF CLEARING

DELINEATED WETLAND

ROCK CHECK DAM

STONE BAG PROTECTION

SILT FENCE/VISUAL BARRIER

TREE LINE

EXIST. INDEX CONTOUR

EXIST. INTERMEDIATE CONTOUR

FLOW DIRECTION

EXISTING CMP/RCP

EXISTING FENCE

EXISTING OVERHEAD ELECTRIC

EXISTING UNDERGROUND ELECTRIC

EXISTING SANITARY FORCE MAIN

EXISTING STORM SEWER

EXISTING ABANDONED RAILROAD

EXISTING UNPAVED ROAD

16509 Timberwood Circle, Suite 100
Louisville, Kentucky 40223-5301
www.stantec.com

30 0 60 120 FEET
GRAPHIC SCALE: 1" = 60'
CONTOUR INTERVAL = 1 FOOT

ISSUED FOR CONSTRUCTION

YARD
POND CREEK

LEVEE RESTORATION
CLEARING AND GRUBBING
SITE CLEARING/EPSC PLAN

DESIGNED BY: J.R. WALTON	DRAWN BY: R.R. PETTY	CHECKED BY: M.C. VAUGHAN	SUPERVISED BY: R.L. ROBERTS	REVIEWED BY: J.L. MADEWELL	APPROVED BY: M.S. TURNBOW	ISSUED BY: J.C. KAMMEYER
-----------------------------	-------------------------	-----------------------------	--------------------------------	-------------------------------	------------------------------	-----------------------------

MUSCLE SHOALS RESERVATION
TENNESSEE VALLEY AUTHORITY
FOSSIL AND HYDRO ENGINEERING

AUTOCAD R 2000	DATE 06/18/14	118	C	SK-04	R 0
----------------	------------------	-----	---	-------	-----

STANTEC	0	PLOT FACTOR:1	C.A.D. DRAWING
TASK COMPLETED BY:	REV NO.	W_TVA	DO NOT ALTER MANUALLY