

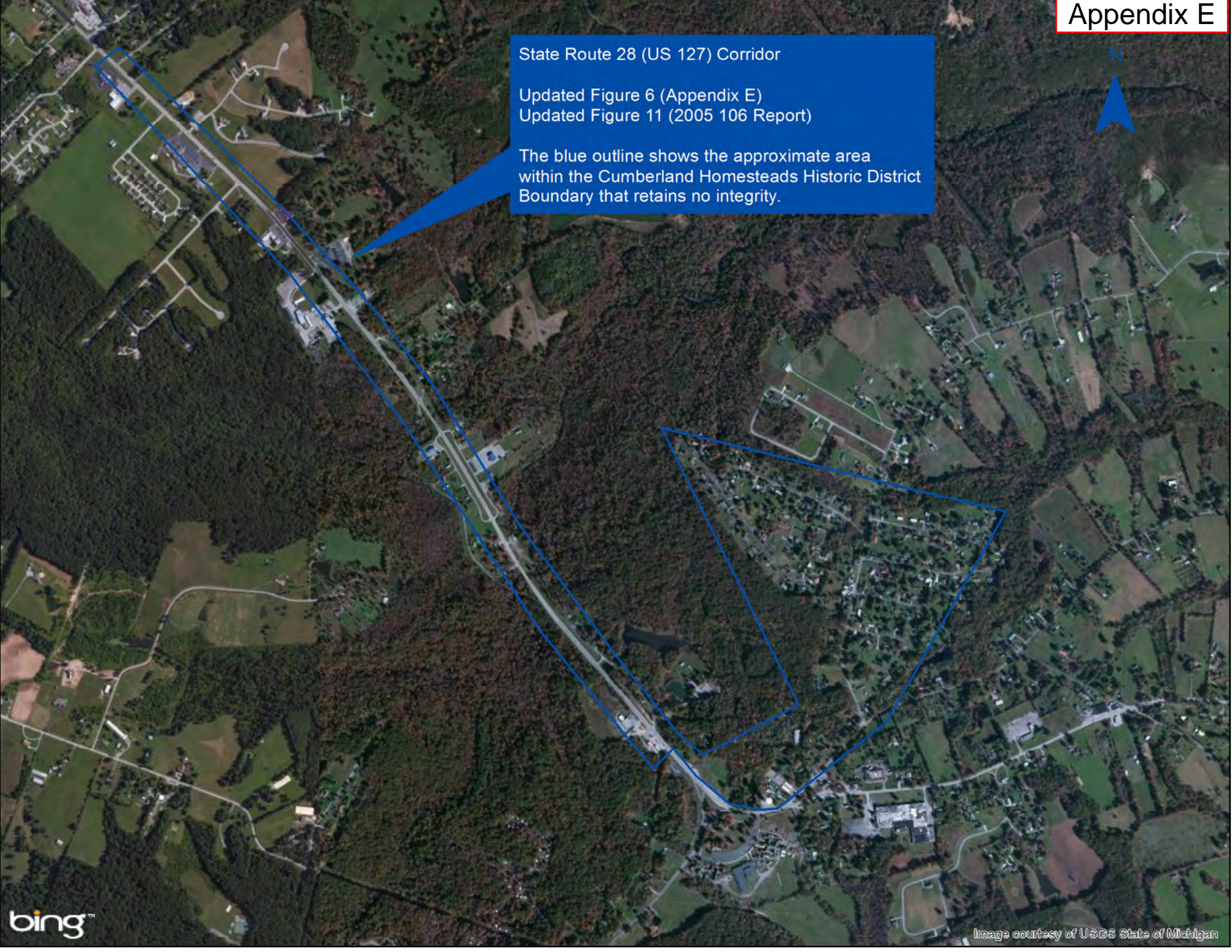
N

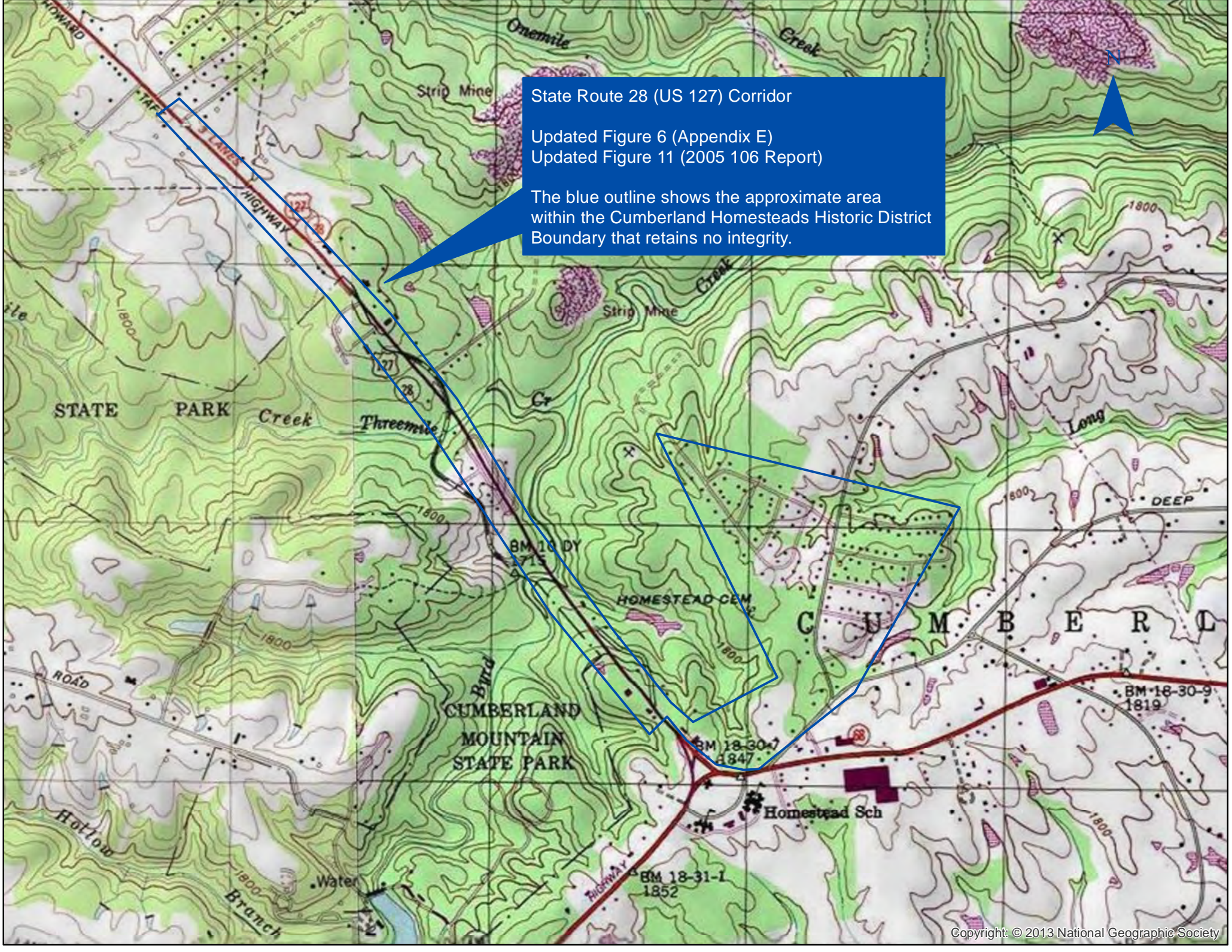


State Route 28 (US 127) Corridor

Updated Figure 6 (Appendix E)
Updated Figure 11 (2005 106 Report)

The blue outline shows the approximate area within the Cumberland Homesteads Historic District Boundary that retains no integrity.





State Route 28 (US 127) Corridor

Updated Figure 6 (Appendix E)
Updated Figure 11 (2005 106 Report)

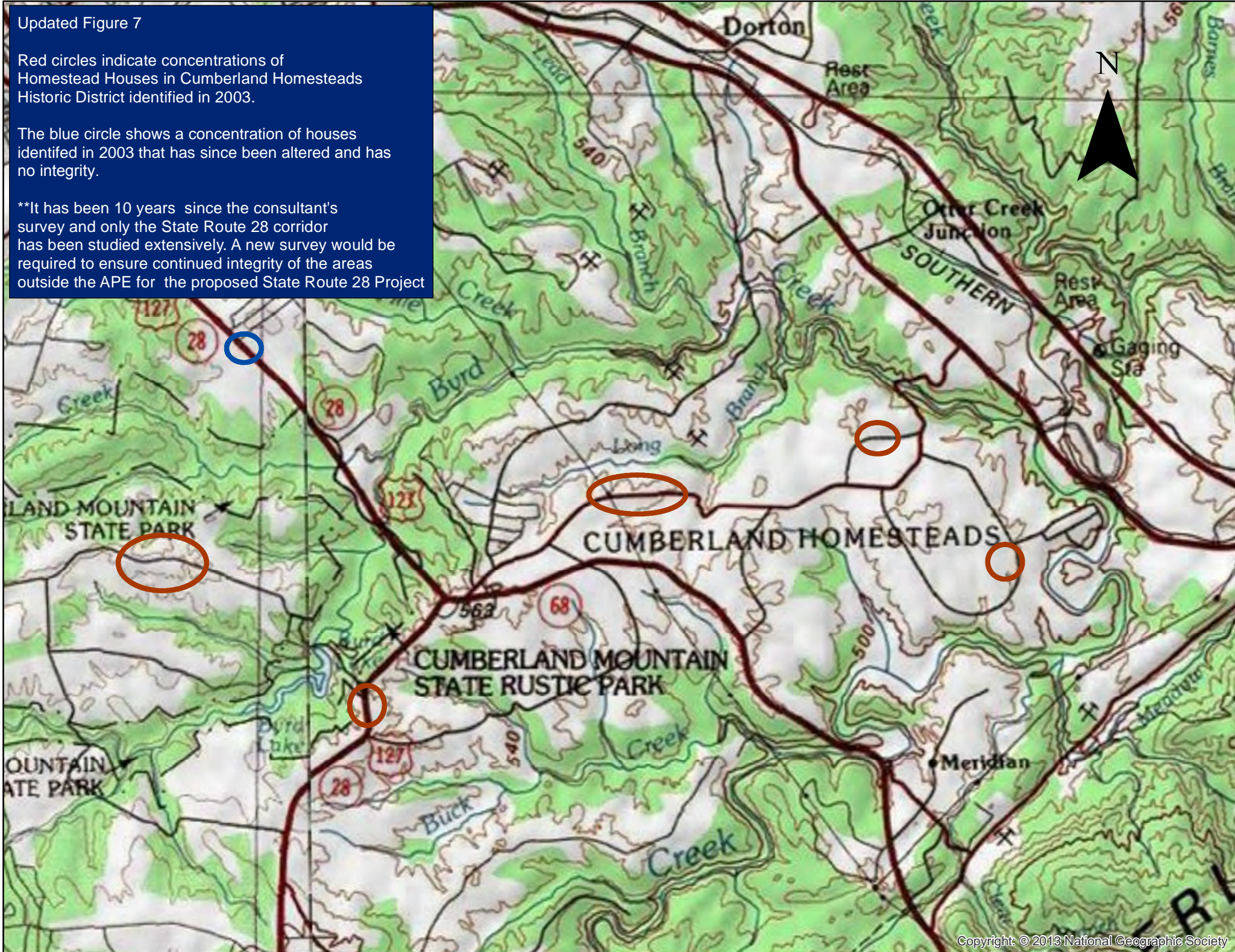
The blue outline shows the approximate area within the Cumberland Homesteads Historic District Boundary that retains no integrity.

Updated Figure 7

Red circles indicate concentrations of Homestead Houses in Cumberland Homesteads Historic District identified in 2003.

The blue circle shows a concentration of houses identified in 2003 that has since been altered and has no integrity.

**It has been 10 years since the consultant's survey and only the State Route 28 corridor has been studied extensively. A new survey would be required to ensure continued integrity of the areas outside the APE for the proposed State Route 28 Project



Updated Figures 6 (Appendix E) and 11 (2005 Section 106 Report): The original map that identified the State Route 28 Corridor as having no integrity was created in Microsoft Word which has a limited drawing function. The consultant who created the map mistakenly included a small portion of the triangle intersection within the box-polygon drawn on the map. The triangle intersection does retain its integrity and the enclosed updated figure excludes the triangle intersection. Given the changes in technology, this software allows for a more accurate polygon that better indicates the corridor identified as lacking in integrity.

Updated Figure 7 (Appendix E): This figure came from a consultant re-evaluation of the historic district for a separate project, un-related to the proposed improvements to State Route 28. It was included in an appendix of the Section 106 Document to help illustrate the integrity issues within the historic district after it was listed in the National Register of Historic Places. In the 2003 study, the consultant identified several concentrations where the number of original Homestead Houses appeared greater than other areas throughout the historic district. One of the concentrations identified was along the State Route 28 corridor. Since the 2003 study, new residential and commercial development along with alterations to the remaining houses changed the integrity and reduced the number of houses in this concentration.

As noted on the enclosed map, the State Route 28 corridor is the only area that has been studied extensively after the completion of this separate survey. Other concentrations identified in the 2003 study would need to be re-evaluated in order to determine their remaining integrity.