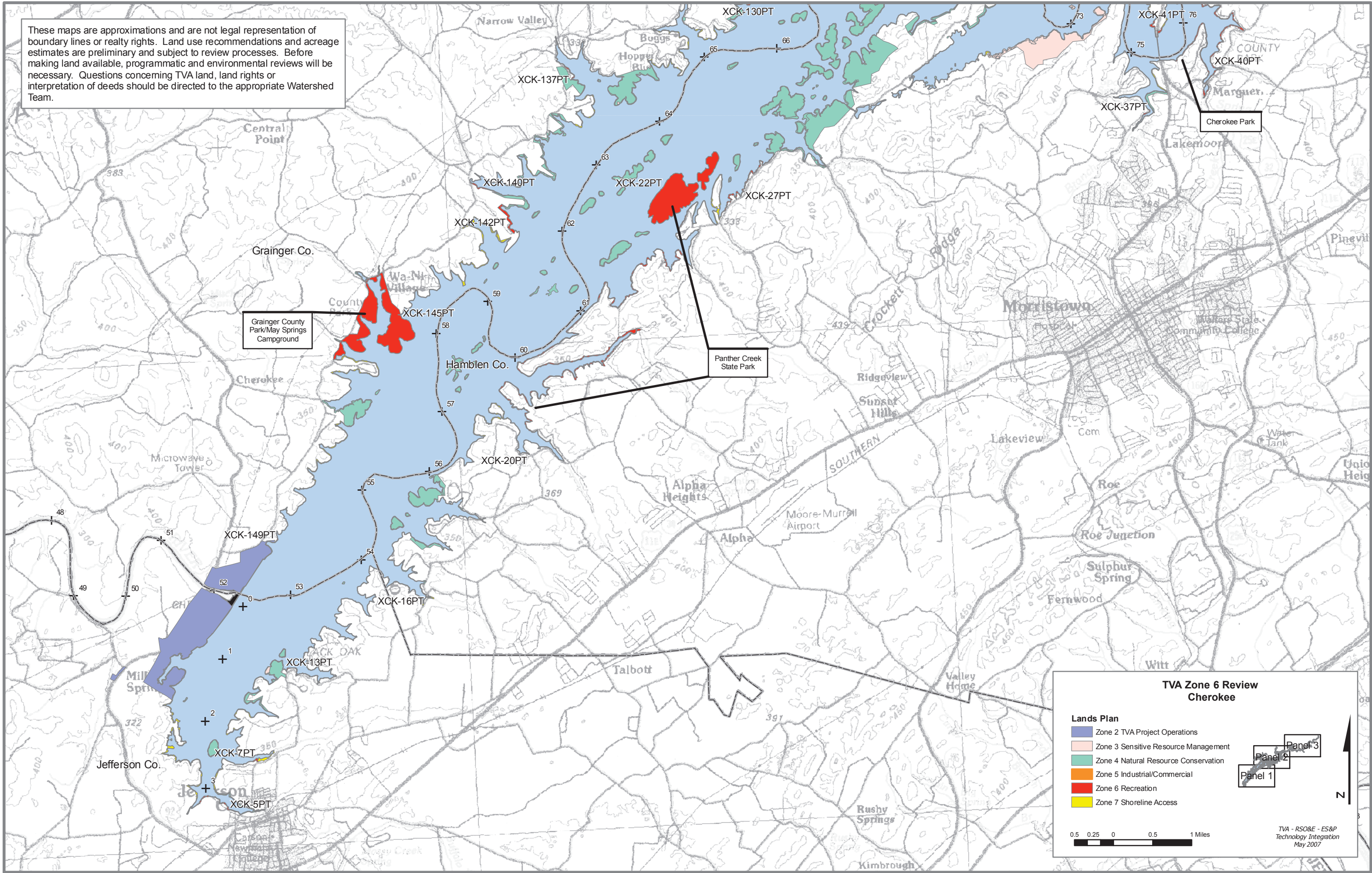


***Disclaimer**

These maps are approximations and are not legal representation of boundary lines or realty rights. Land use recommendations and acreage estimates are preliminary and subject to review processes. Before making land available, programmatic and environmental reviews will be necessary. Questions concerning TVA land, land rights, or interpretation of deeds should be directed to the appropriate watershed team.

These maps are approximations and are not legal representation of boundary lines or realty rights. Land use recommendations and acreage estimates are preliminary and subject to review processes. Before making land available, programmatic and environmental reviews will be necessary. Questions concerning TVA land, land rights or interpretation of deeds should be directed to the appropriate Watershed Team.



TVA Zone 6 Review Cherokee

Lands Plan

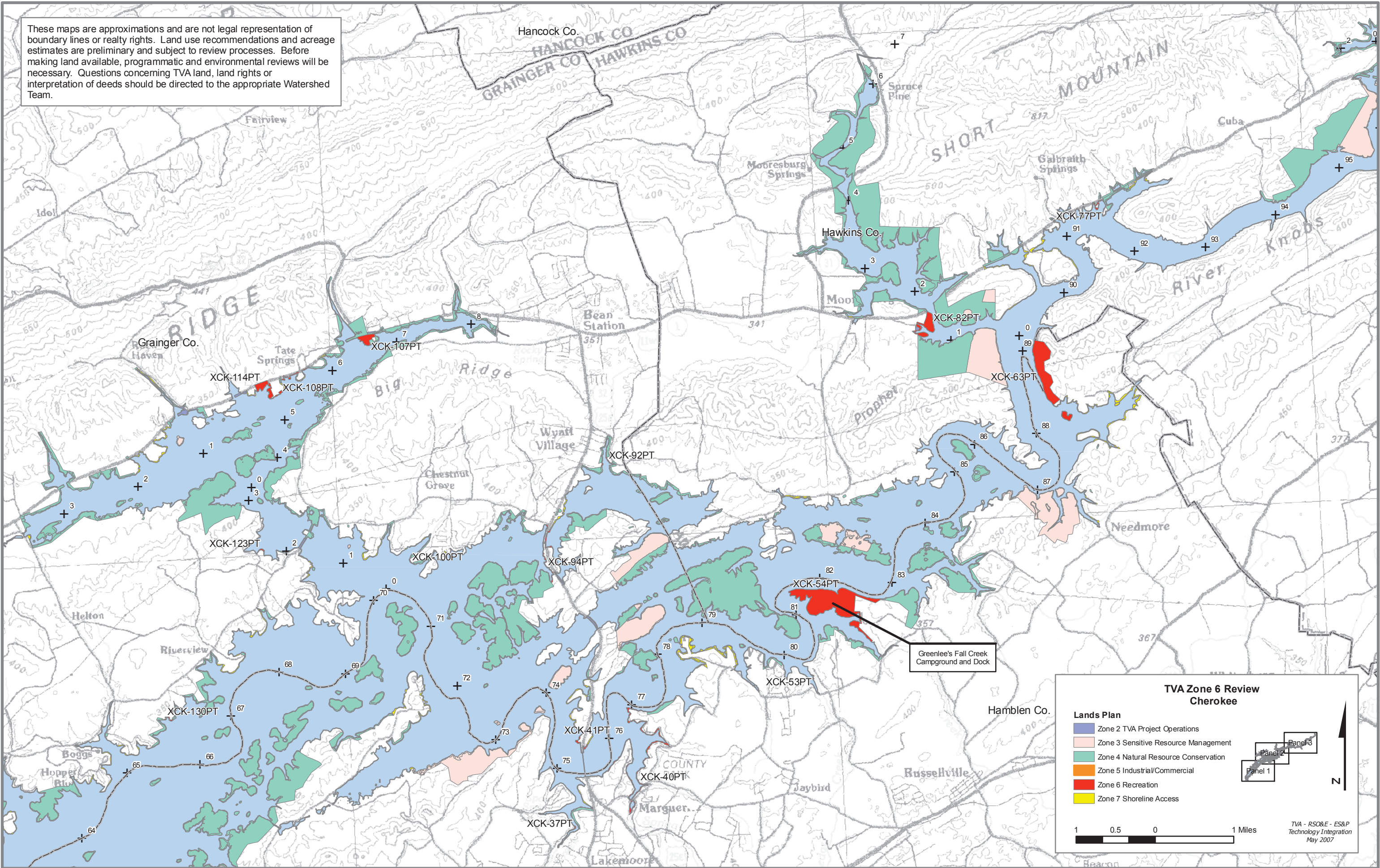
- Zone 2 TVA Project Operations
- Zone 3 Sensitive Resource Management
- Zone 4 Natural Resource Conservation
- Zone 5 Industrial/Commercial
- Zone 6 Recreation
- Zone 7 Shoreline Access

0.5 0.25 0 0.5 1 Miles

TVA - RS&E - ES&P
Technology Integration
May 2007

Panel 1
Panel 2
Panel 3

These maps are approximations and are not legal representation of boundary lines or realty rights. Land use recommendations and acreage estimates are preliminary and subject to review processes. Before making land available, programmatic and environmental reviews will be necessary. Questions concerning TVA land, land rights or interpretation of deeds should be directed to the appropriate Watershed Team.



Greenlee's Fall Creek Campground and Dock

TVA Zone 6 Review Cherokee

Lands Plan

- Zone 2 TVA Project Operations
- Zone 3 Sensitive Resource Management
- Zone 4 Natural Resource Conservation
- Zone 5 Industrial/Commercial
- Zone 6 Recreation
- Zone 7 Shoreline Access

1 0.5 0 1 Miles

TVA - RS&E - ES&P
Technology Integration
May 2007

These maps are approximations and are not legal representation of boundary lines or realty rights. Land use recommendations and acreage estimates are preliminary and subject to review processes. Before making land available, programmatic and environmental reviews will be necessary. Questions concerning TVA land, land rights or interpretation of deeds should be directed to the appropriate Watershed Team.

