

***Disclaimer**

These maps are approximations and are not legal representation of boundary lines or realty rights. Land use recommendations and acreage estimates are preliminary and subject to review processes. Before making land available, programmatic and environmental reviews will be necessary. Questions concerning TVA land, land rights, or interpretation of deeds should be directed to the appropriate watershed team.

These maps are approximations and are not legal representation of boundary lines or realty rights. Land use recommendations and acreage estimates are preliminary and subject to review processes. Before making land available, programmatic and environmental reviews will be necessary. Questions concerning TVA land, land rights or interpretation of deeds should be directed to the appropriate Watershed Team.

Madison Co.

Hebron

Honeycomb Creek Campground/ Boat Access

Columbus City

XGR-9PT2

XGR-21PT2 GN-21FK

XGR-61PT2

XGR-6PT2

XGR-279PT2

XGR-276PT2

XGR-274PT2

XGR-250PT2

XGR-248PT2

XGR-228PT2

XGR-225PT2

XGR-221PT2

XGR-246PT2

XGR-231PT2

XGR-236PT2

XGR-244PT2

XGR-264PT2

XGR-256PT2

XGR-253PT2

XGR-255PT2

XGR-243PT2

XGR-49PT2

XGR-51PT2

XGR-56PT2

Seibold Creek Campground

Conners Island

GN-1FK

GN-2FK

Claysville

Guntersville Municipal Airport

Marshall County Park

Marshall Co.

Warrenton

Guntersville City Park

Continental Tire

GN-6FK

GN-3FK

GN-4FK

GN-5FK

GN-6FK

Land Plan

- Zone 2 TVA Project Operations
- Zone 3 Sensitive Resource Management
- Zone 4 Natural Resource Conservation
- Zone 5 Industrial/Commercial
- Zone 6 Recreation
- Zone 7 Shoreline Access

TVA Zone 5 and 6 Review
Guntersville

Inset (Panel 3)

Panel 1

Panel 2

Panel 3

Panel 4

Panel 5

0 5 10 20 30 40 Miles

TVA - RSO&E - ES&P
Technology Integration
August 2007

TVA - RSO&E - ES&P
Technology Integration
August 2007

These maps are approximations and are not legal representation of boundary lines or realty rights. Land use recommendations and acreage estimates are preliminary and subject to review processes. Before making land available, programmatic and environmental reviews will be necessary. Questions concerning TVA land, land rights or interpretation of deeds should be directed to the appropriate Watershed Team.

**TVA Zone 5 and 6 Review
Guntersville**

Land Plan

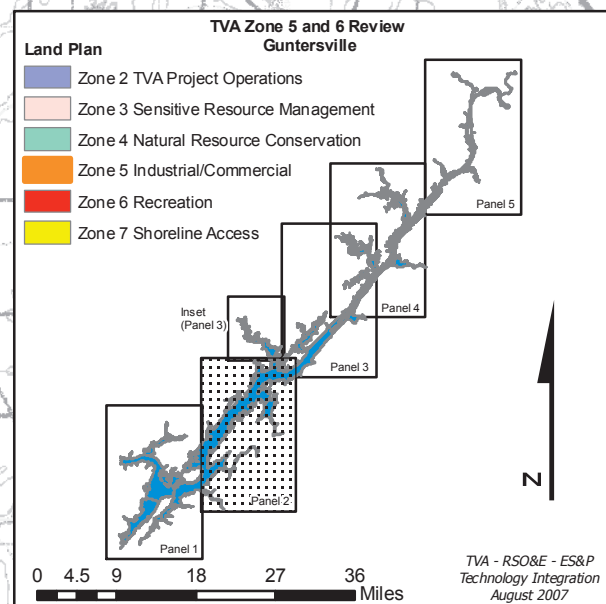
- Zone 2 TVA Project Operations
- Zone 3 Sensitive Resource Management
- Zone 4 Natural Resource Conservation
- Zone 5 Industrial/Commercial
- Zone 6 Recreation
- Zone 7 Shoreline Access

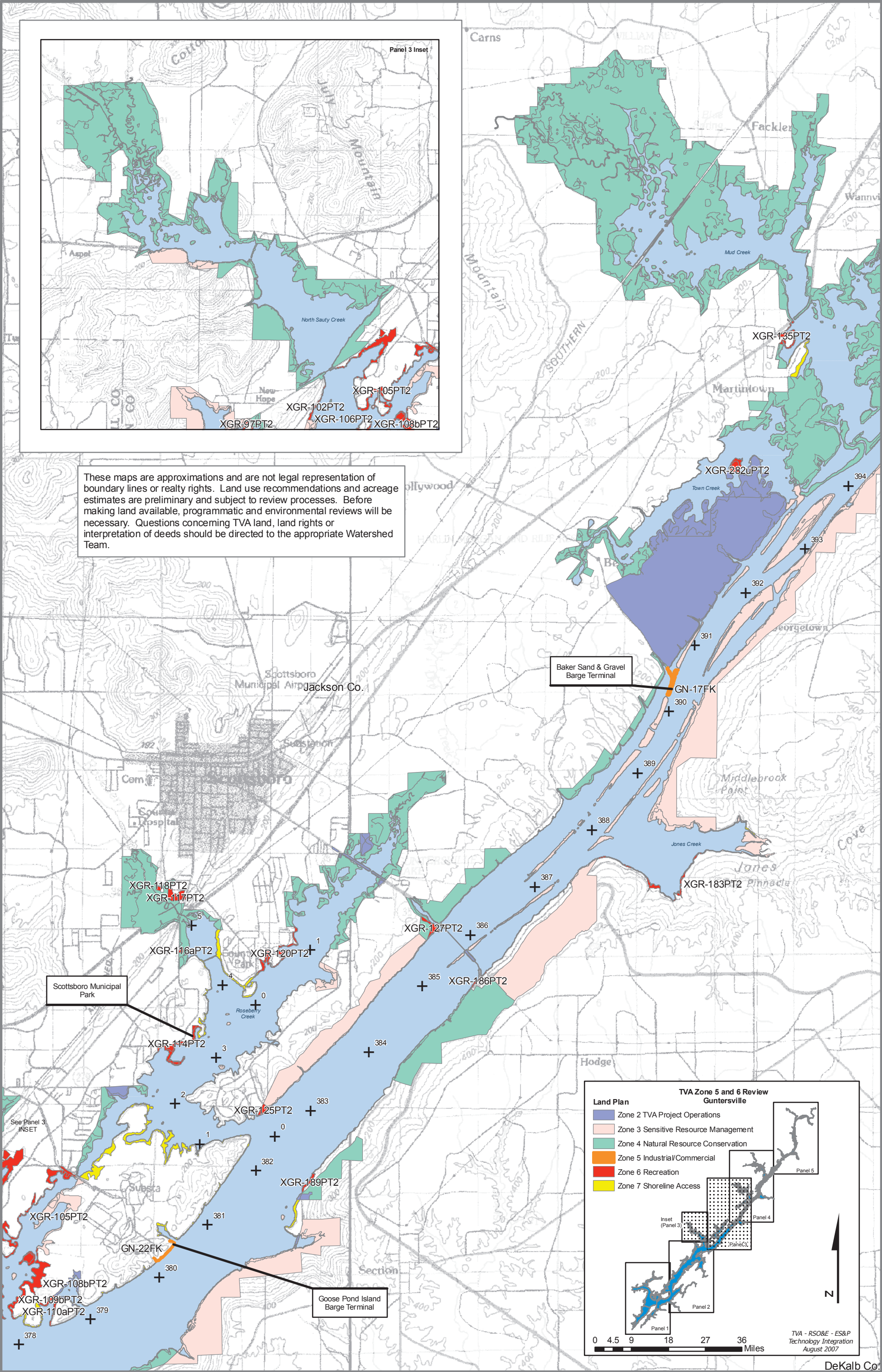
Inset (Panel 3)

Panel 1 Panel 2 Panel 3 Panel 4 Panel 5

0 4.5 9 18 27 36 Miles

TVA - RSO&E - ES&P
Technology Integration
August 2007





These maps are approximations and are not legal representation of boundary lines or realty rights. Land use recommendations and acreage estimates are preliminary and subject to review processes. Before making land available, programmatic and environmental reviews will be necessary. Questions concerning TVA land, land rights or interpretation of deeds should be directed to the appropriate Watershed Team.

Land Plan

- Zone 2 TVA Project Operations
- Zone 3 Sensitive Resource Management
- Zone 4 Natural Resource Conservation
- Zone 5 Industrial/Commercial
- Zone 6 Recreation
- Zone 7 Shoreline Access

TVA Zone 5 and 6 Review
Guntersville

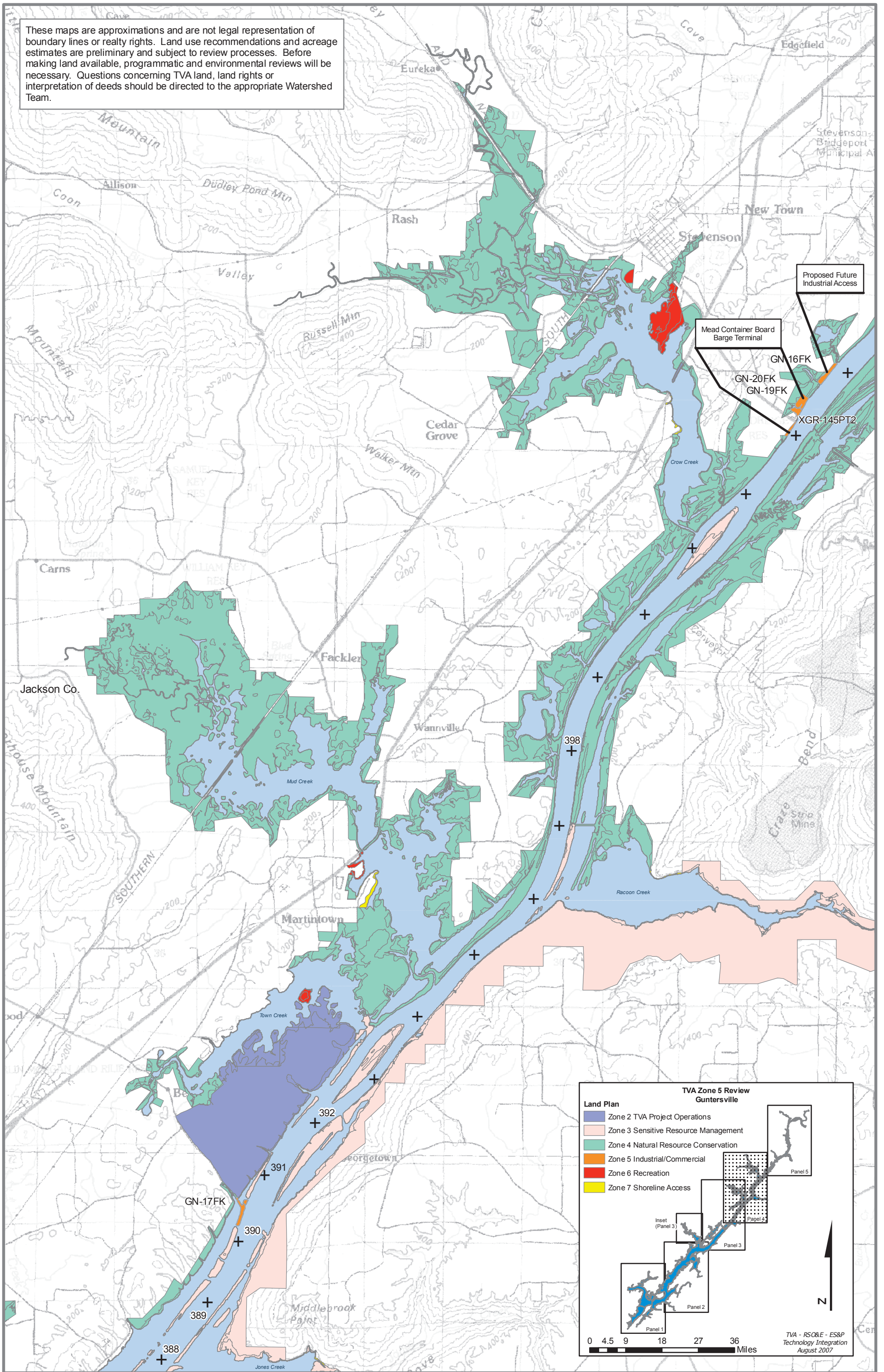
Panel 1, Panel 2, Panel 3, Panel 4, Panel 5, Inset (Panel 3)

0 4.5 9 18 27 36 Miles

TVA - RSO&E - ES&P
Technology Integration
August 2007

DeKalb Co.

These maps are approximations and are not legal representation of boundary lines or realty rights. Land use recommendations and acreage estimates are preliminary and subject to review processes. Before making land available, programmatic and environmental reviews will be necessary. Questions concerning TVA land, land rights or interpretation of deeds should be directed to the appropriate Watershed Team.



These maps are approximations and are not legal representation of boundary lines or realty rights. Land use recommendations and acreage estimates are preliminary and subject to review processes. Before making land available, programmatic and environmental reviews will be necessary. Questions concerning TVA land, land rights or interpretation of deeds should be directed to the appropriate Watershed Team.

