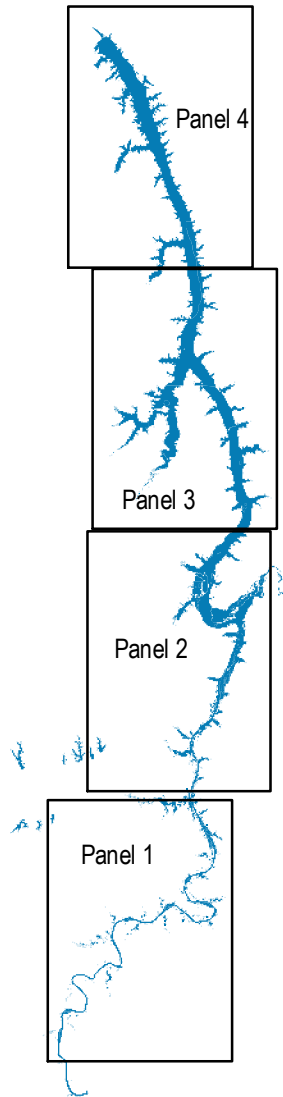








TVA Zone Review for Kentucky

Panel 1



Land Plan

-  Zone 2 TVA Project Operations
-  Zone 3 Sensitive Resource Management
-  Zone 4 Natural Resource Conservation
-  Zone 5 Industrial/Commercial
-  Zone 6 Recreation
-  Zone 7 Shoreline Access

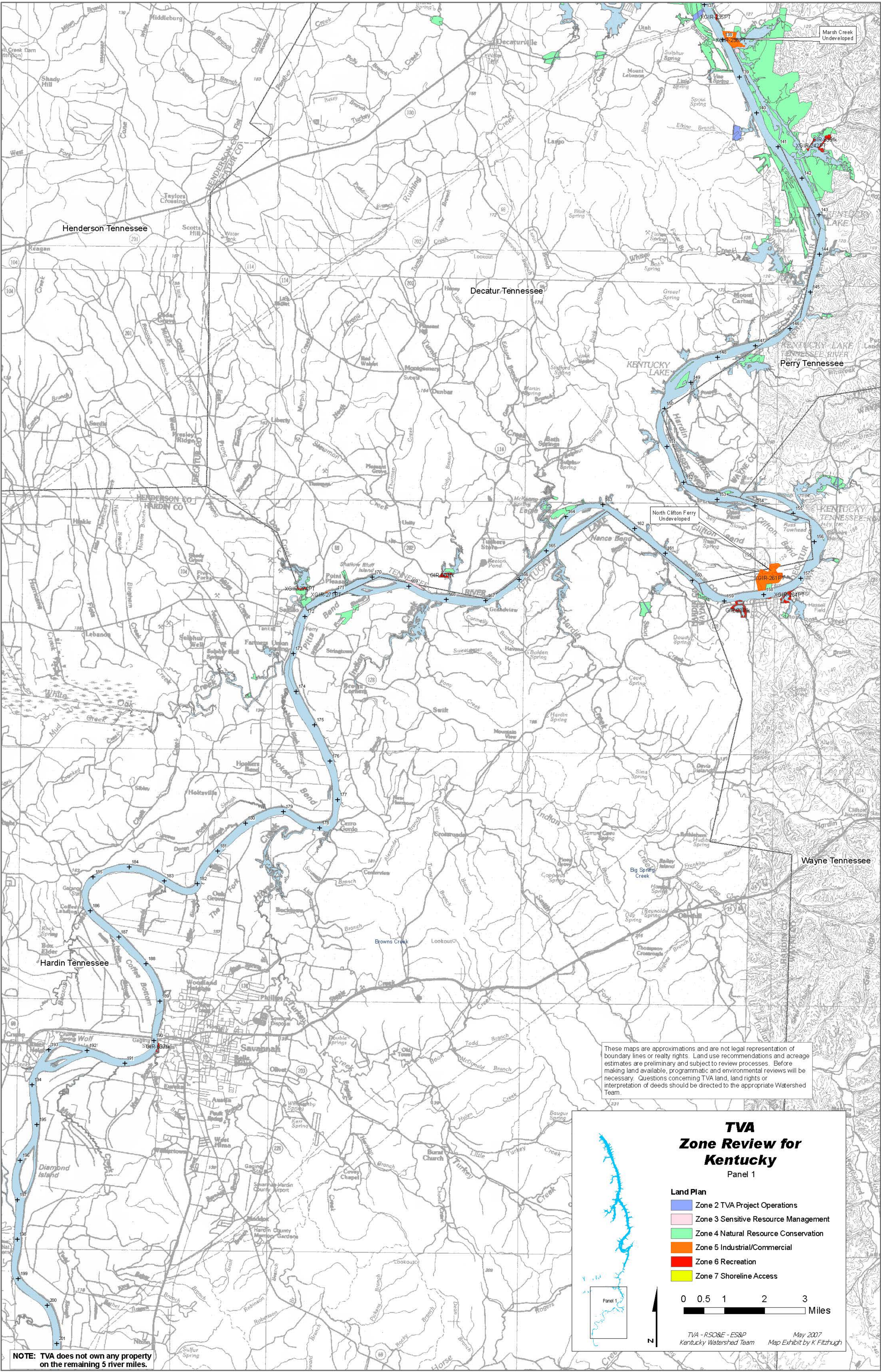


*TVA - RSO&E - ES&P
Kentucky Watershed Team*

*May 2007
Map Exhibit by K Fitzhugh*

***Disclaimer**

These maps are approximations and are not legal representation of boundary lines or realty rights. Land use recommendations and acreage estimates are preliminary and subject to review processes. Before making land available, programmatic and environmental reviews will be necessary. Questions concerning TVA land, land rights, or interpretation of deeds should be directed to the appropriate watershed team.



These maps are approximations and are not legal representation of boundary lines or realty rights. Land use recommendations and acreage estimates are preliminary and subject to review processes. Before making land available, programmatic and environmental reviews will be necessary. Questions concerning TVA land, land rights or interpretation of deeds should be directed to the appropriate Watershed Team.

- TVA**
Zone Review for
Kentucky
Panel 1
- Land Plan**
- Zone 2 TVA Project Operations
 - Zone 3 Sensitive Resource Management
 - Zone 4 Natural Resource Conservation
 - Zone 5 Industrial/Commercial
 - Zone 6 Recreation
 - Zone 7 Shoreline Access

0 0.5 1 2 3
Miles

TVA - RSQ&E - ES&P
Kentucky Watershed Team
May 2007
Map Exhibit by K Fitzhugh

NOTE: TVA does not own any property on the remaining 5 river miles.

