





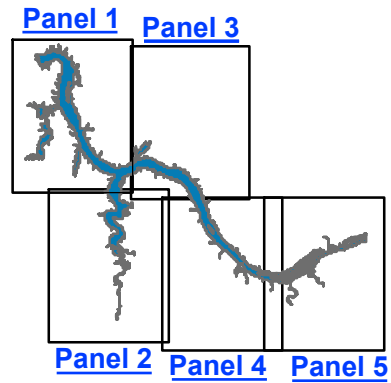


TVA Zone 5 and 6 Review Pickwick Reservoir

Land Plan

-  Zone 2 TVA Project Operations
-  Zone 3 Sensitive Resource Management
-  Zone 4 Natural Resource Conservation
-  Zone 5 Industrial/Commercial
-  Zone 6 Recreation
-  Zone 7 Shoreline Access



0 0.45 0.9 1.8 2.7 Miles

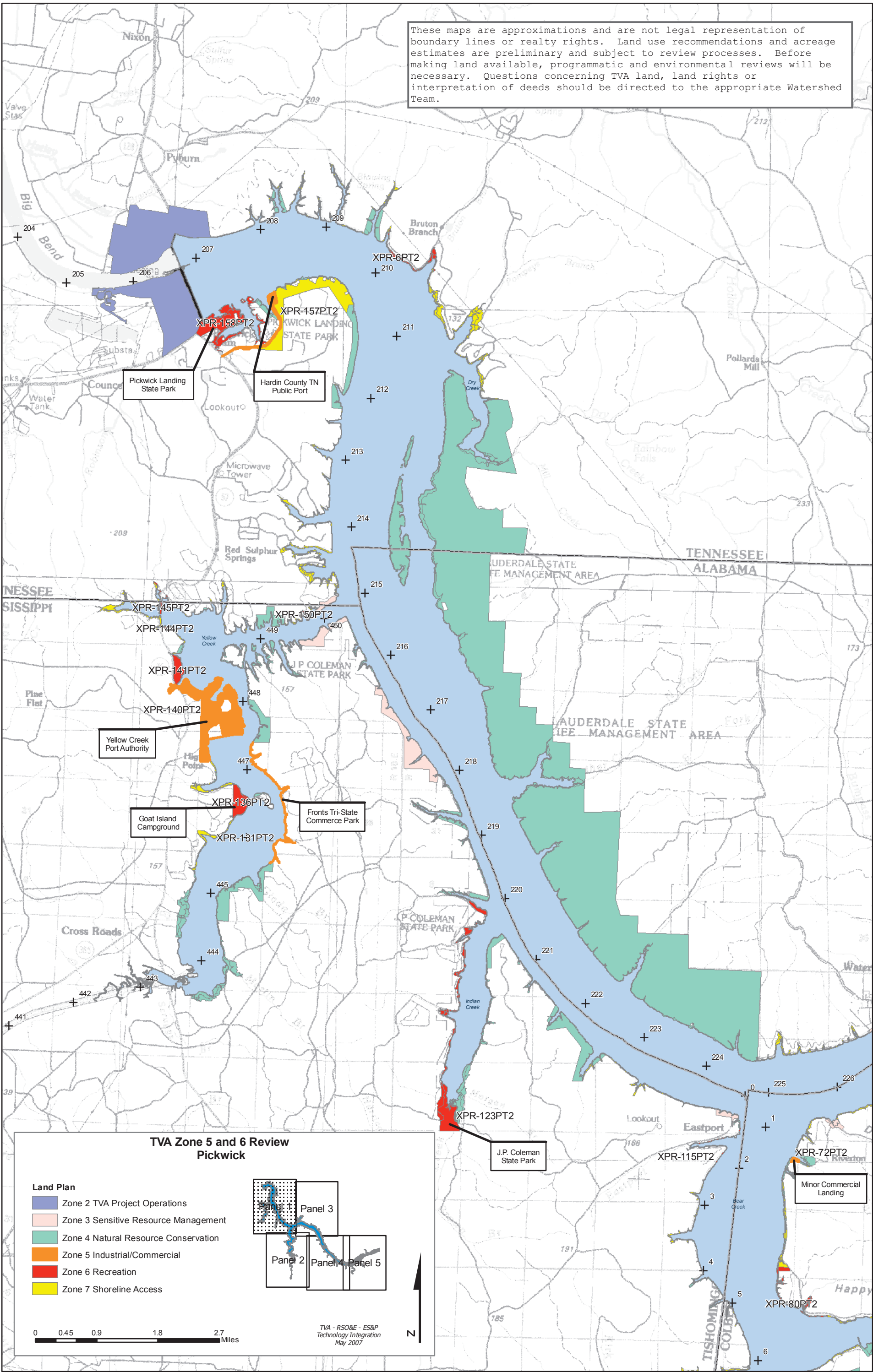
TVA - RSO&E - ES&P
Technology Integration
May 2007

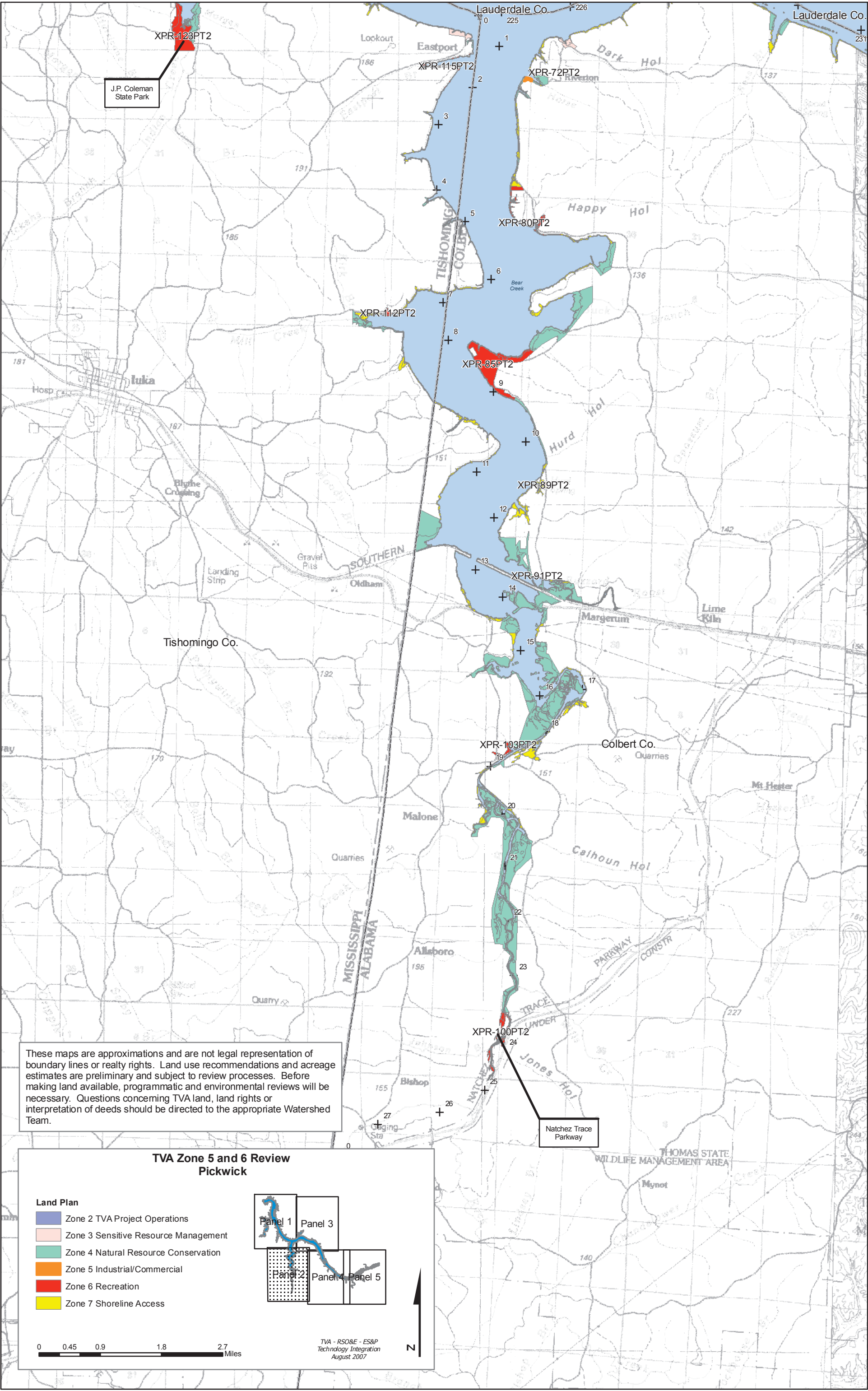
N

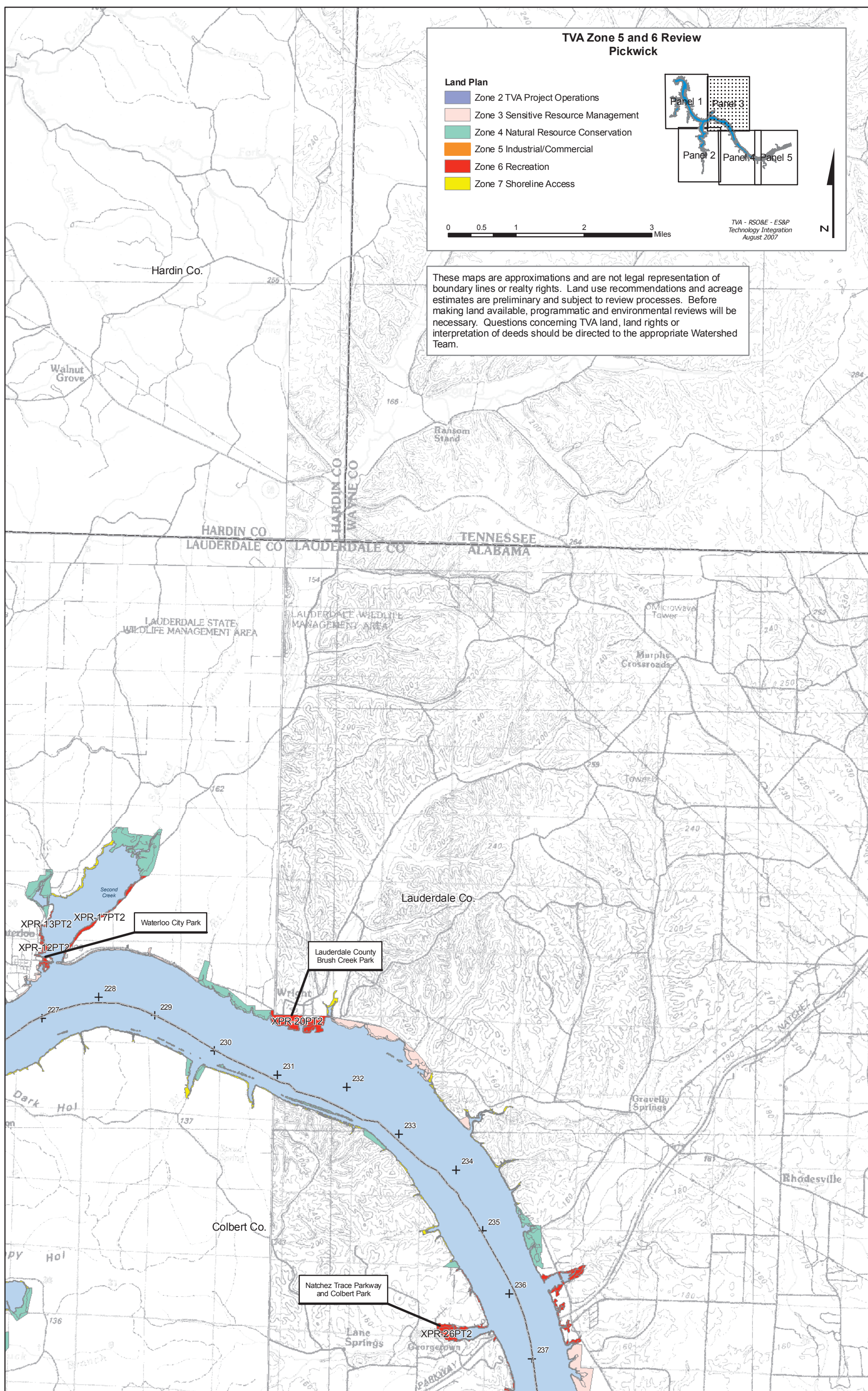
*Disclaimer

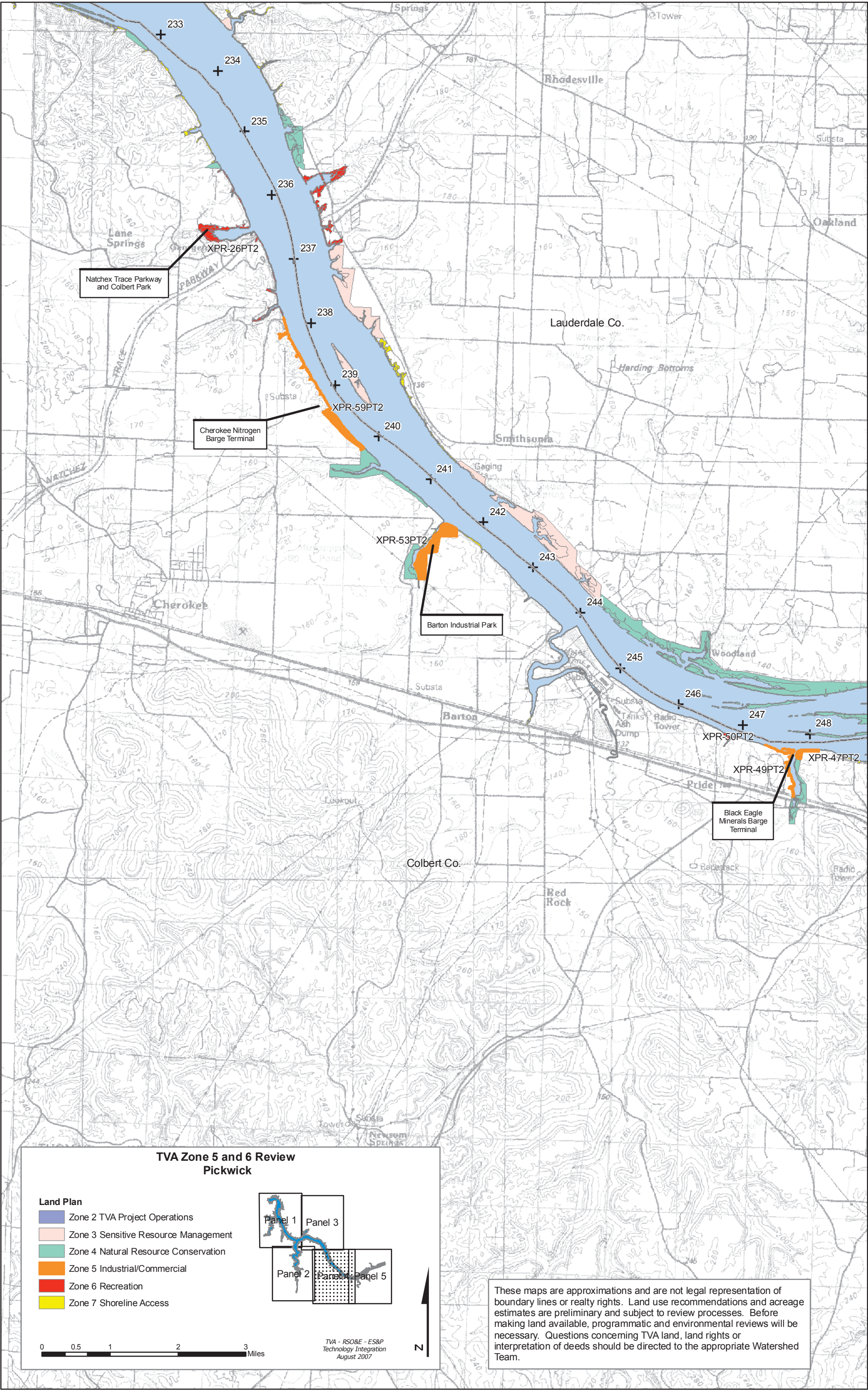
These maps are approximations and are not legal representation of boundary lines or realty rights. Land use recommendations and acreage estimates are preliminary and subject to review processes. Before making land available, programmatic and environmental reviews will be necessary. Questions concerning TVA land, land rights, or interpretation of deeds should be directed to the appropriate watershed team.

These maps are approximations and are not legal representation of boundary lines or realty rights. Land use recommendations and acreage estimates are preliminary and subject to review processes. Before making land available, programmatic and environmental reviews will be necessary. Questions concerning TVA land, land rights or interpretation of deeds should be directed to the appropriate Watershed Team.









Natchez Trace Parkway and Colbert Park

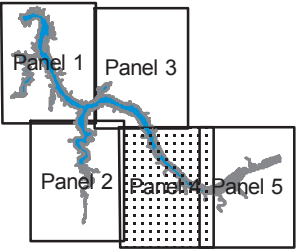
Cherokee Nitrogen Barge Terminal

Barton Industrial Park

Black Eagle Minerals Barge Terminal

**TVA Zone 5 and 6 Review
Pickwick**

- Land Plan**
- Zone 2 TVA Project Operations
 - Zone 3 Sensitive Resource Management
 - Zone 4 Natural Resource Conservation
 - Zone 5 Industrial/Commercial
 - Zone 6 Recreation
 - Zone 7 Shoreline Access



0 0.5 1 2 3 Miles

TVA - RSO&E - ES&P
Technology Integration
August 2007

N

These maps are approximations and are not legal representation of boundary lines or realty rights. Land use recommendations and acreage estimates are preliminary and subject to review processes. Before making land available, programmatic and environmental reviews will be necessary. Questions concerning TVA land, land rights or interpretation of deeds should be directed to the appropriate Watershed Team.

