





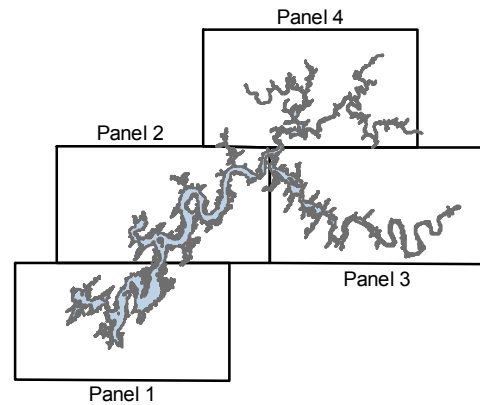


# TVA Zone 5 and 6 Review Watts Bar Reservoir

## Lands Plan

-  Zone 2 TVA Project Operations
-  Zone 3 Sensitive Resource Management
-  Zone 4 Natural Resource Conservation
-  Zone 5 Industrial/Commercial
-  Zone 6 Recreation
-  Zone 7 Shoreline Access



0 15 30 60 Miles

TVA - RSO&E - ES&P  
Technology Integration  
January 2007

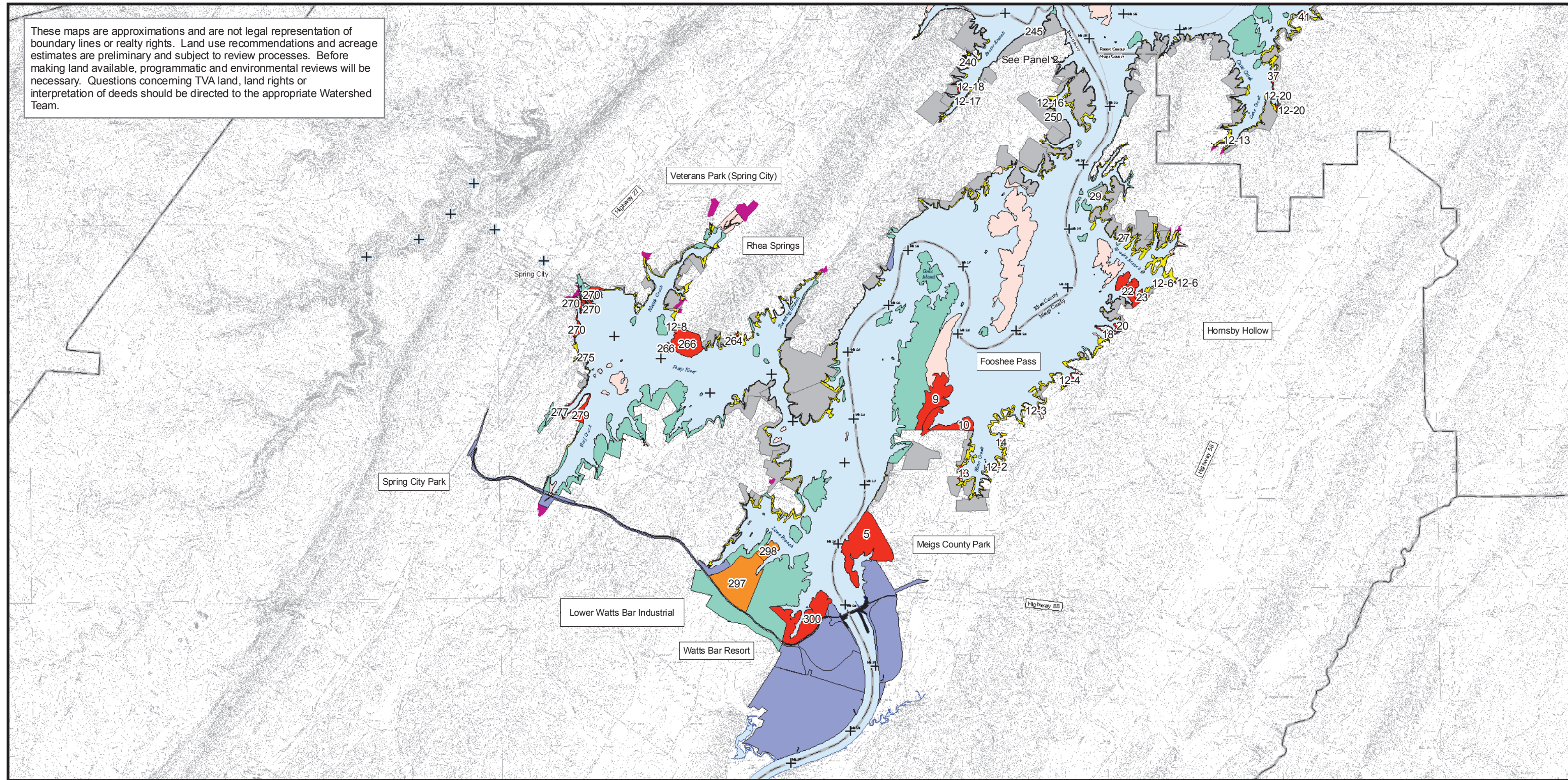


### \*Disclaimer

These maps are approximations and are not legal representation of boundary lines or realty rights. Land use recommendations and acreage estimates are preliminary and subject to review processes. Before making land available, programmatic and environmental reviews will be necessary. Questions concerning TVA land, land rights, or interpretation of deeds should be directed to the appropriate watershed team.



These maps are approximations and are not legal representation of boundary lines or realty rights. Land use recommendations and acreage estimates are preliminary and subject to review processes. Before making land available, programmatic and environmental reviews will be necessary. Questions concerning TVA land, land rights or interpretation of deeds should be directed to the appropriate Watershed Team.



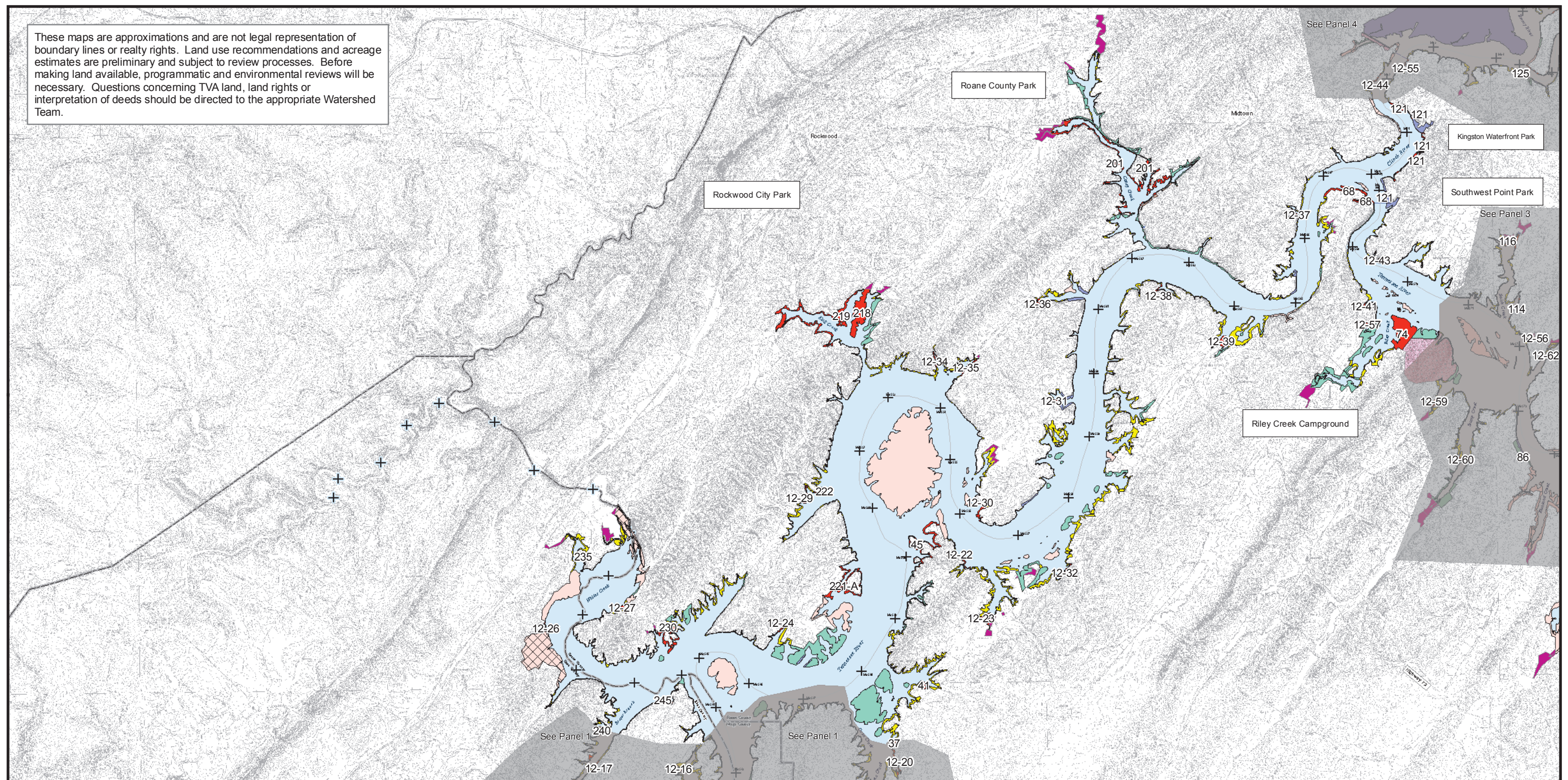
- Zone 1 - Non-TVA Shoreland
- Zone 2 - Project Operations
- Zone 3 - Sensitive Resource Management
- Zone 4 - Natural Resource Conservation
- Zone 5 - Industrial
- Zone 6 - Developed Recreation
- Zone 7 - Shoreline Access
- Dam
- Reservoir

# Watts Bar Reservoir Zone 5 and 6 Parcels Panel 1





These maps are approximations and are not legal representation of boundary lines or realty rights. Land use recommendations and acreage estimates are preliminary and subject to review processes. Before making land available, programmatic and environmental reviews will be necessary. Questions concerning TVA land, land rights or interpretation of deeds should be directed to the appropriate Watershed Team.

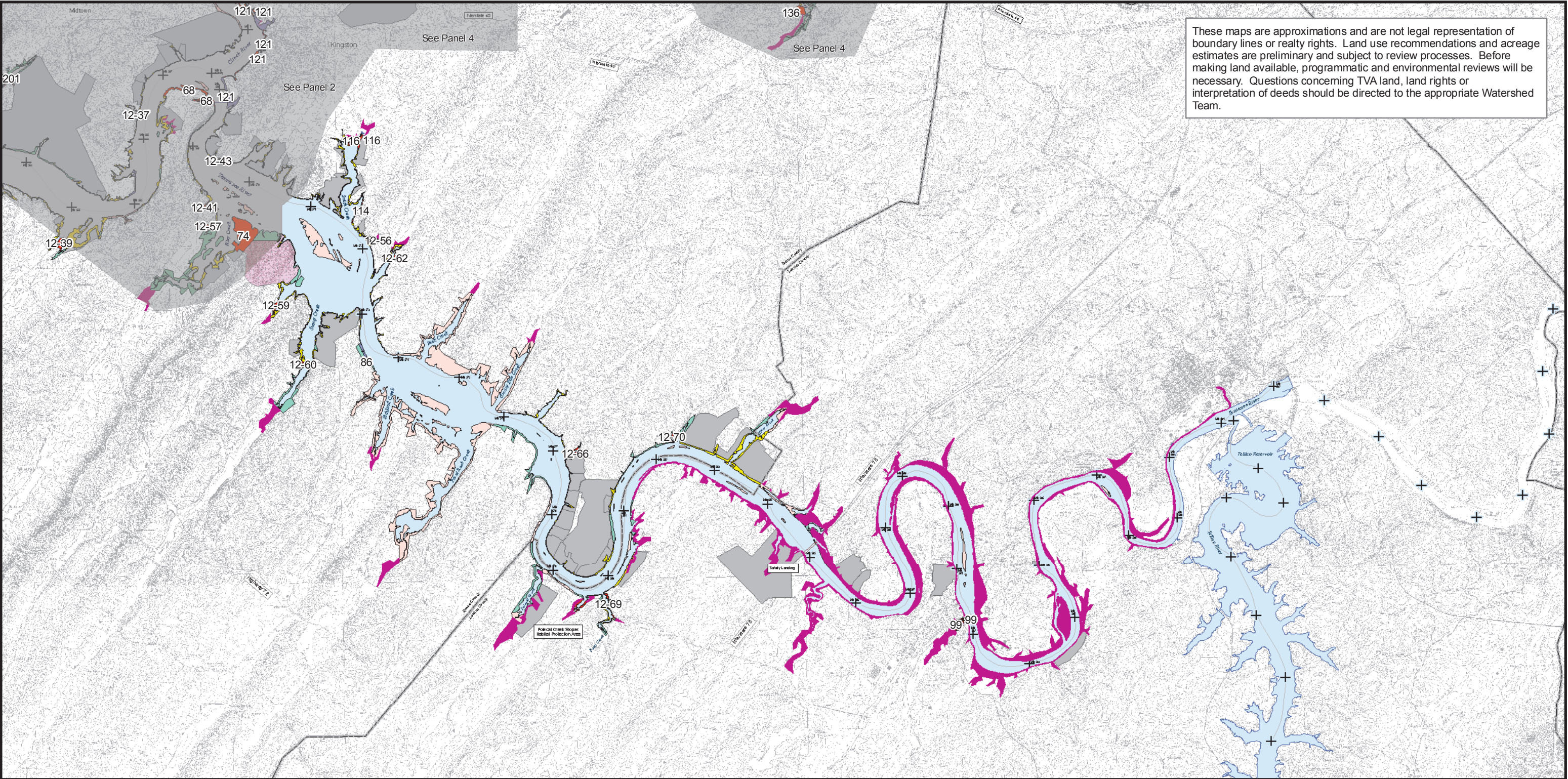


- Zone 1 - Non-TVA Shoreland
- Zone 2 - Project Operations
- Zone 3 - Sensitive Resource Management
- Zone 4 - Natural Resource Conservation
- Zone 5 - Industrial
- Zone 6 - Developed Recreation
- Zone 7 - Shoreline Access
- Dam
- Reservoir

## Watts Bar Reservoir Zone 5 and 6 Parcels Panel 2







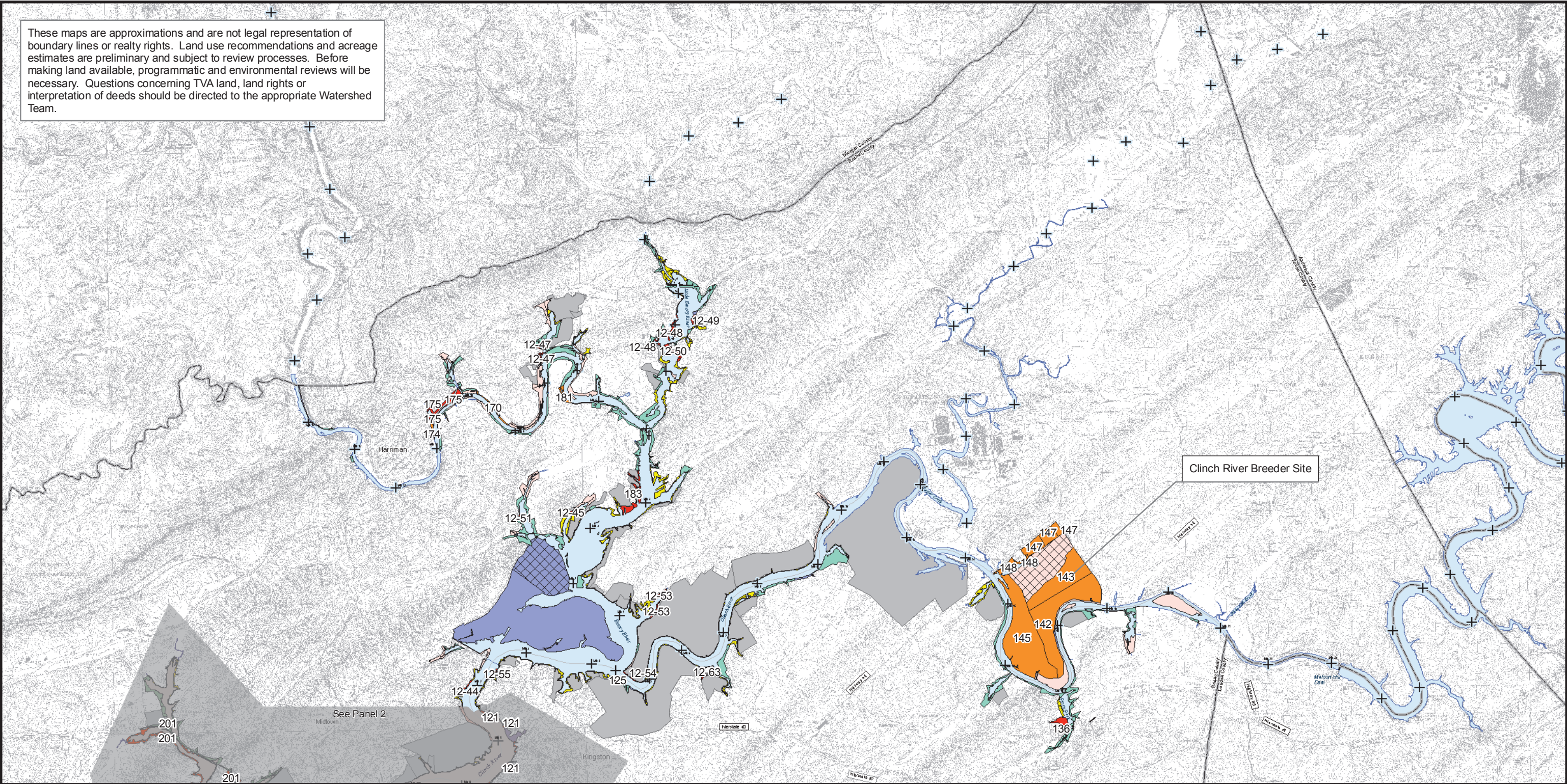
# Watts Bar Reservoir Zone 5 and 6 Parcels Panel 3

- Zone 1 - Non-TVA Shoreland
- Zone 2 - Project Operations
- Zone 3 - Sensitive Resource Management
- Zone 4 - Natural Resource Conservation
- Zone 5 - Industrial
- Zone 6 - Developed Recreation
- Zone 7 - Shoreline Access
- Dam
- Reservoir





These maps are approximations and are not legal representation of boundary lines or realty rights. Land use recommendations and acreage estimates are preliminary and subject to review processes. Before making land available, programmatic and environmental reviews will be necessary. Questions concerning TVA land, land rights or interpretation of deeds should be directed to the appropriate Watershed Team.



- Zone 1 - Non-TVA Shoreland
- Zone 2 - Project Operations
- Zone 3 - Sensitive Resource Management
- Zone 4 - Natural Resource Conservation
- Zone 5 - Industrial
- Zone 6 - Developed Recreation
- Zone 7 - Shoreline Access
- Dam
- Reservoir

# Watts Bar Reservoir Zone 5 and 6 Parcels Panel 4

