





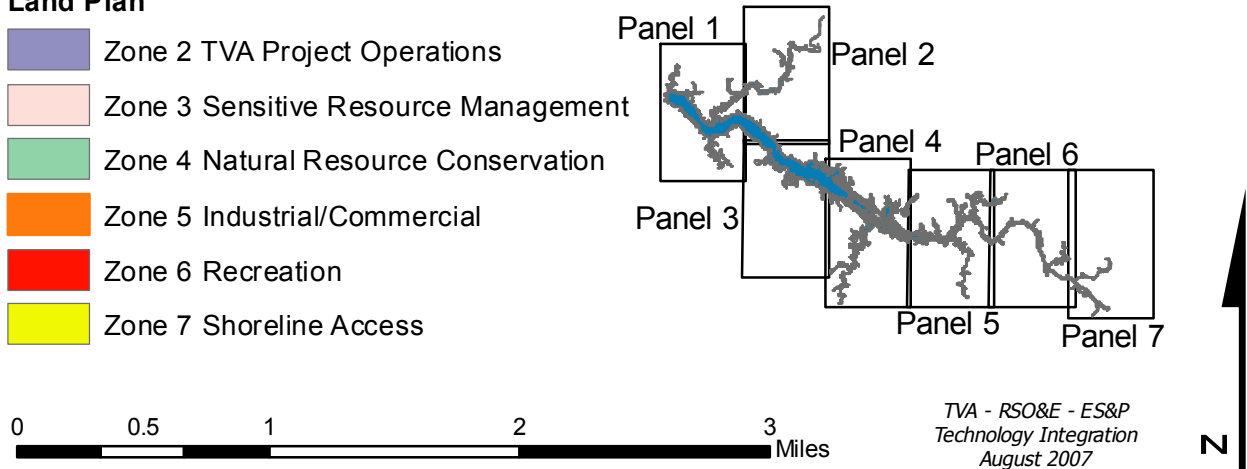


## TVA Zone 5 and 6 Review Wheeler Reservoir

### Land Plan

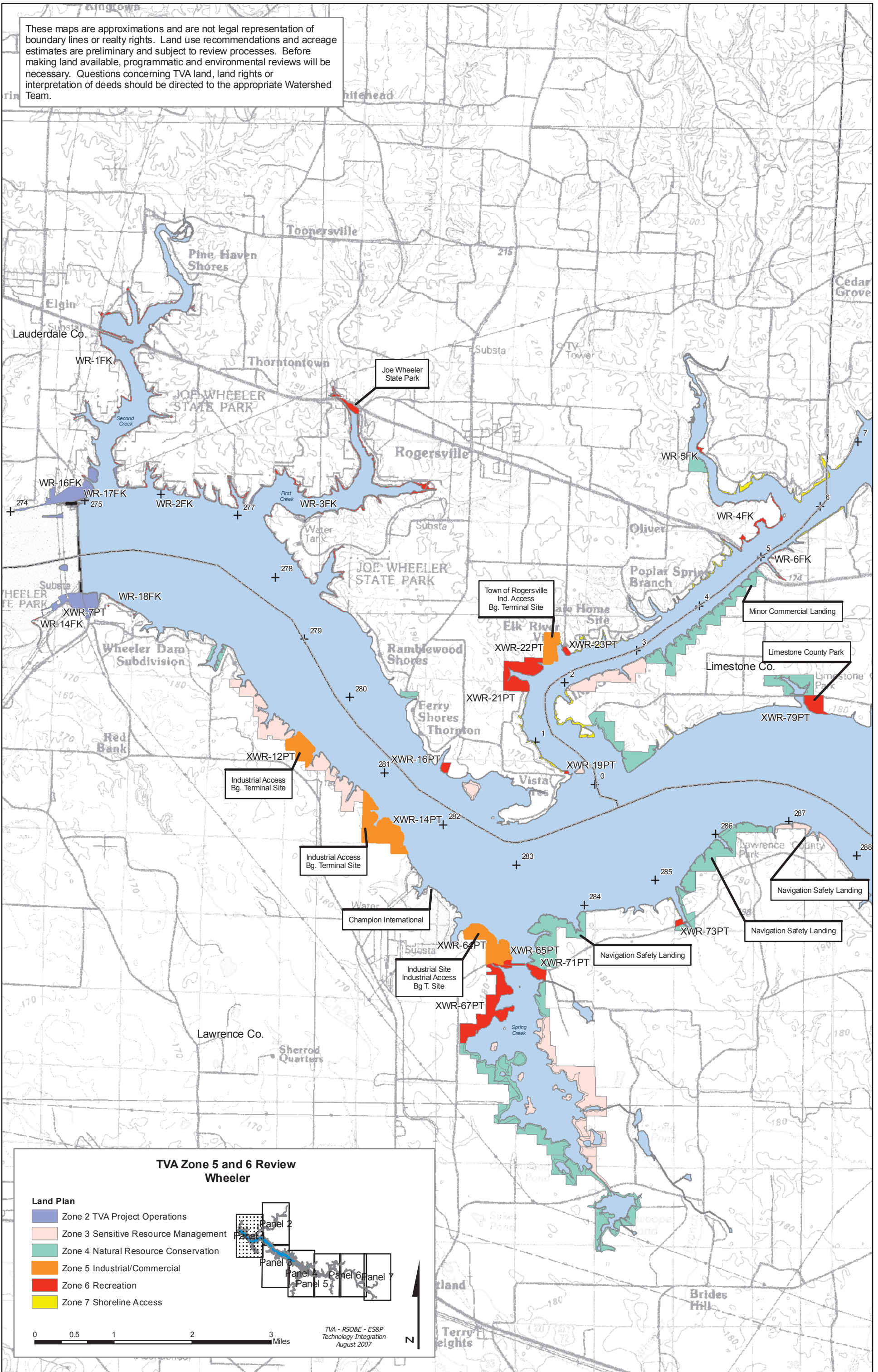
-  Zone 2 TVA Project Operations
-  Zone 3 Sensitive Resource Management
-  Zone 4 Natural Resource Conservation
-  Zone 5 Industrial/Commercial
-  Zone 6 Recreation
-  Zone 7 Shoreline Access



### \*Disclaimer

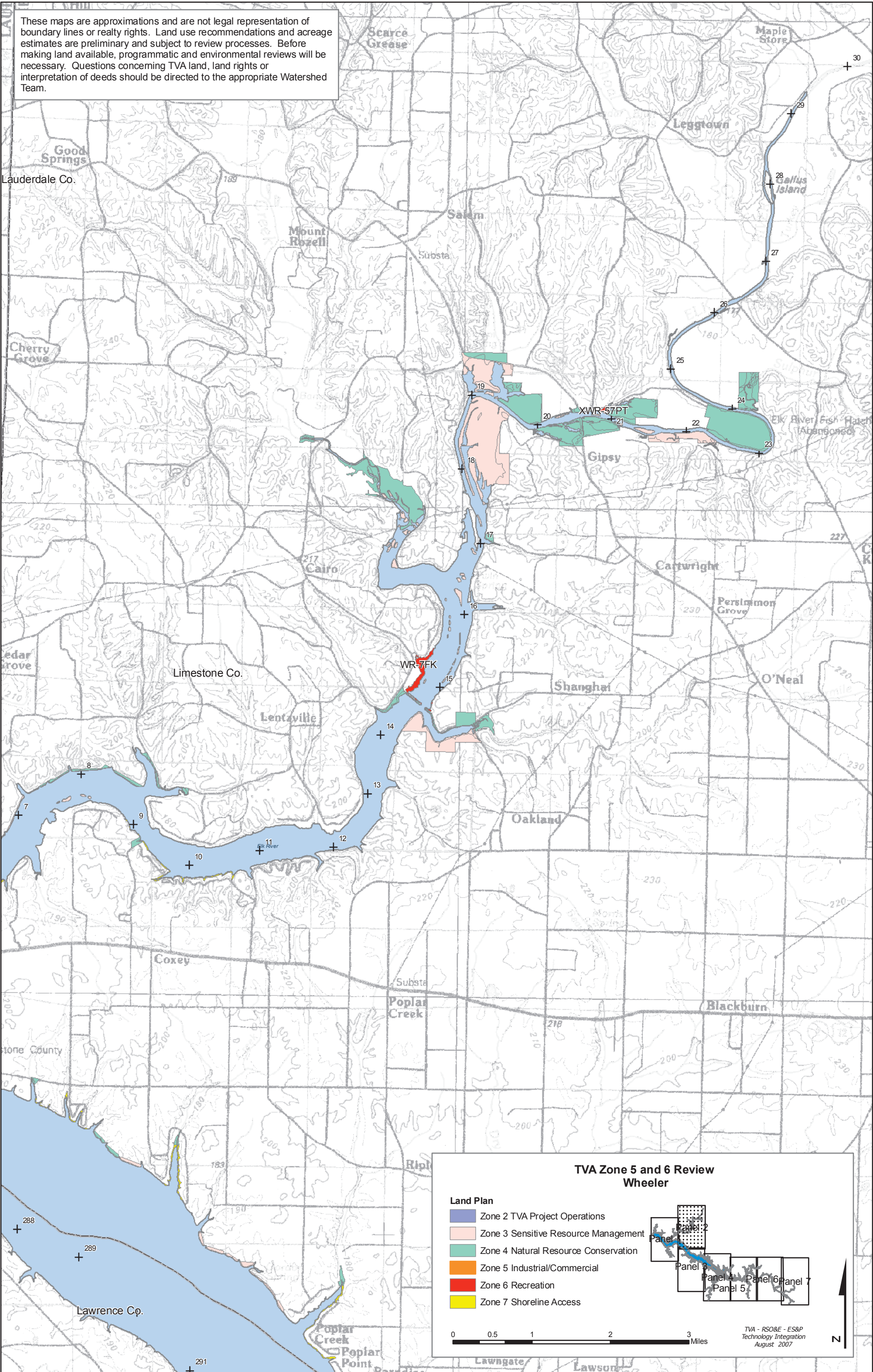
These maps are approximations and are not legal representation of boundary lines or realty rights. Land use recommendations and acreage estimates are preliminary and subject to review processes. Before making land available, programmatic and environmental reviews will be necessary. Questions concerning TVA land, land rights, or interpretation of deeds should be directed to the appropriate watershed team.

These maps are approximations and are not legal representation of boundary lines or realty rights. Land use recommendations and acreage estimates are preliminary and subject to review processes. Before making land available, programmatic and environmental reviews will be necessary. Questions concerning TVA land, land rights or interpretation of deeds should be directed to the appropriate Watershed Team.





These maps are approximations and are not legal representation of boundary lines or realty rights. Land use recommendations and acreage estimates are preliminary and subject to review processes. Before making land available, programmatic and environmental reviews will be necessary. Questions concerning TVA land, land rights or interpretation of deeds should be directed to the appropriate Watershed Team.

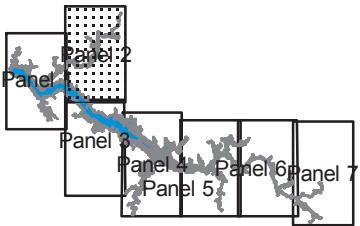


**TVA Zone 5 and 6 Review  
Wheeler**

**Land Plan**

- Zone 2 TVA Project Operations
- Zone 3 Sensitive Resource Management
- Zone 4 Natural Resource Conservation
- Zone 5 Industrial/Commercial
- Zone 6 Recreation
- Zone 7 Shoreline Access

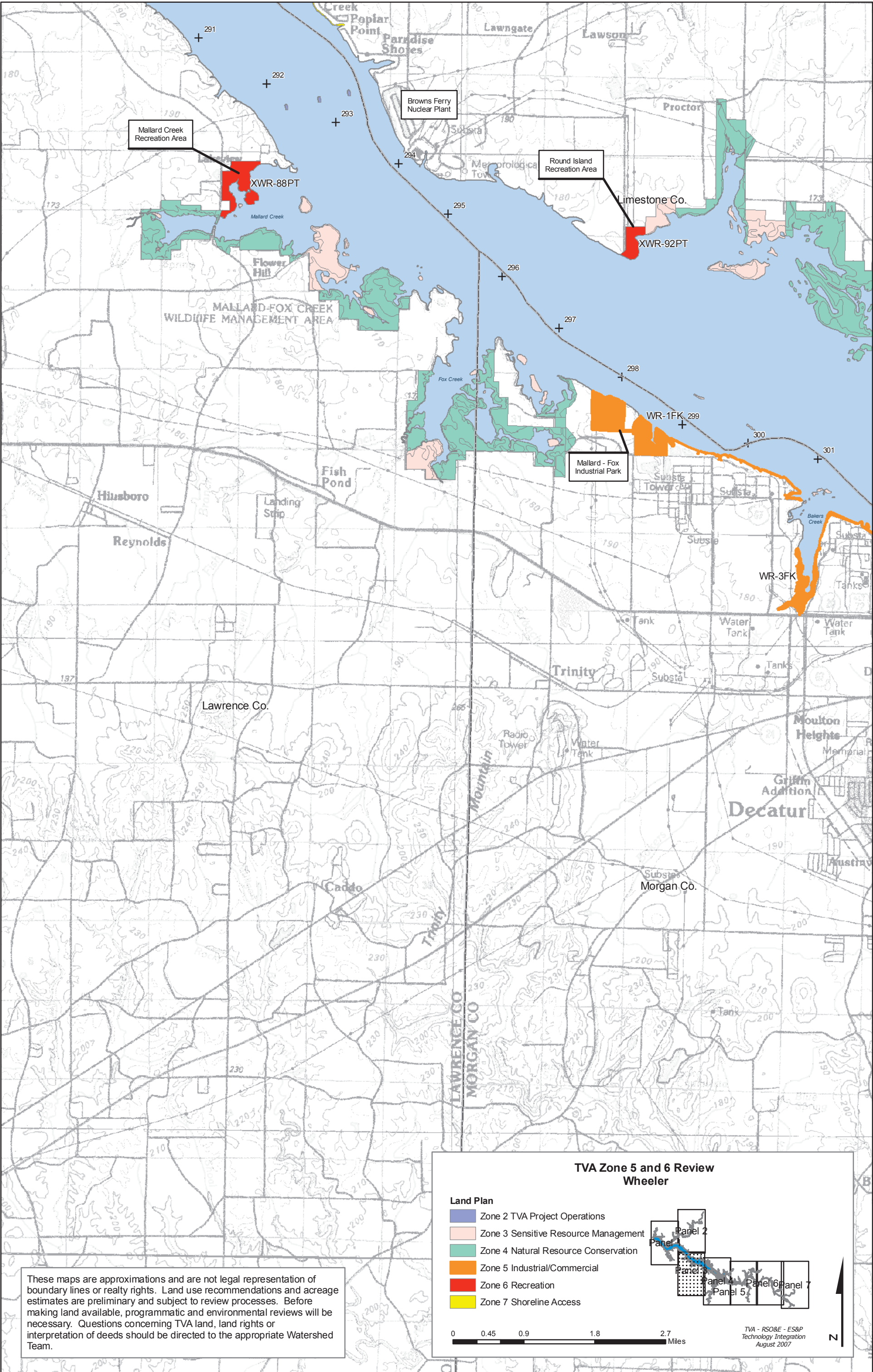
0 0.5 1 2 3 Miles



TVA - RSO&E - ES&P  
Technology Integration  
August 2007







These maps are approximations and are not legal representation of boundary lines or realty rights. Land use recommendations and acreage estimates are preliminary and subject to review processes. Before making land available, programmatic and environmental reviews will be necessary. Questions concerning TVA land, land rights or interpretation of deeds should be directed to the appropriate Watershed Team.

### TVA Zone 5 and 6 Review Wheeler

**Land Plan**

- Zone 2 TVA Project Operations
- Zone 3 Sensitive Resource Management
- Zone 4 Natural Resource Conservation
- Zone 5 Industrial/Commercial
- Zone 6 Recreation
- Zone 7 Shoreline Access

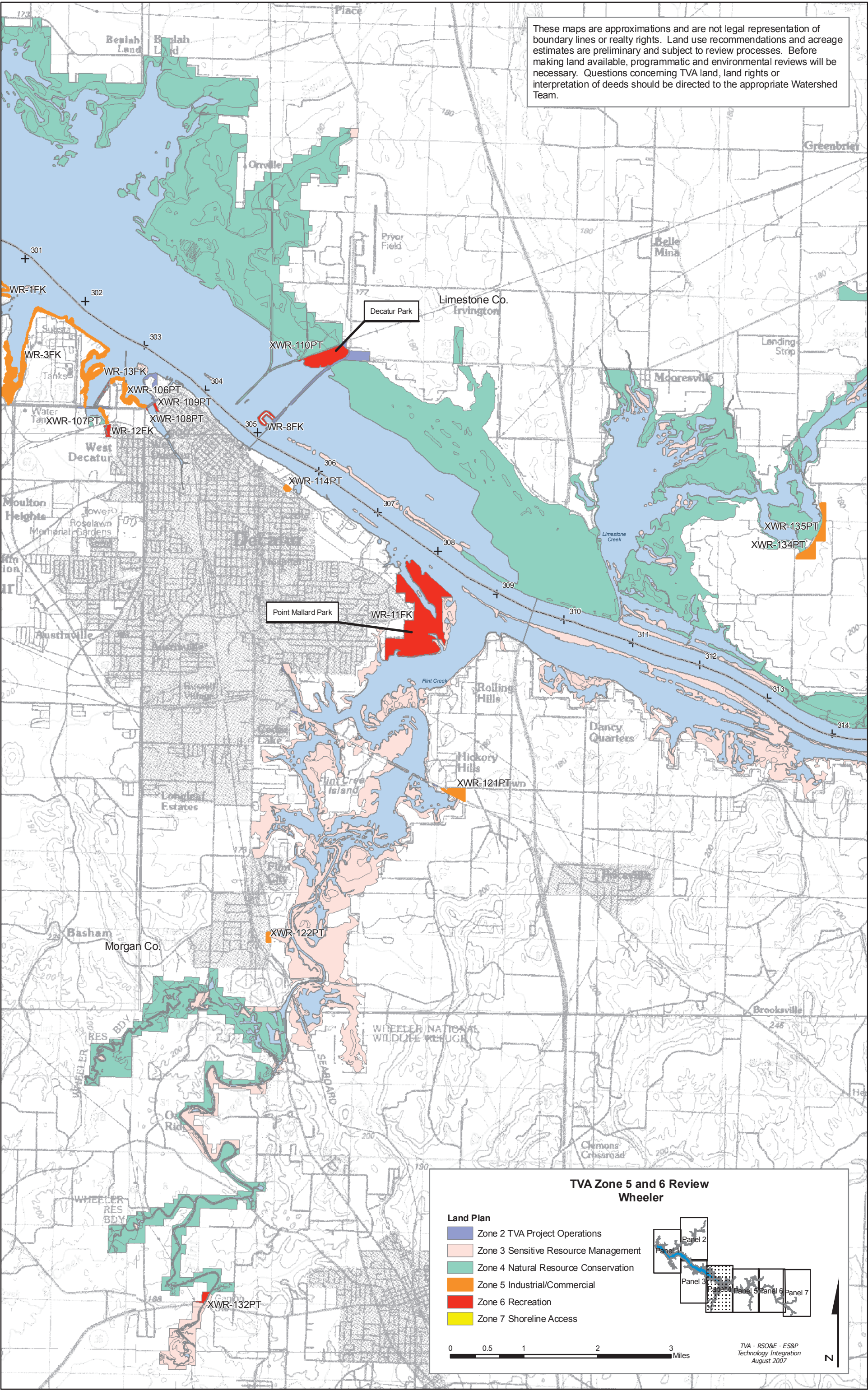
Panel 2  
Panel 3  
Panel 4  
Panel 5  
Panel 6  
Panel 7

0 0.45 0.9 1.8 2.7 Miles

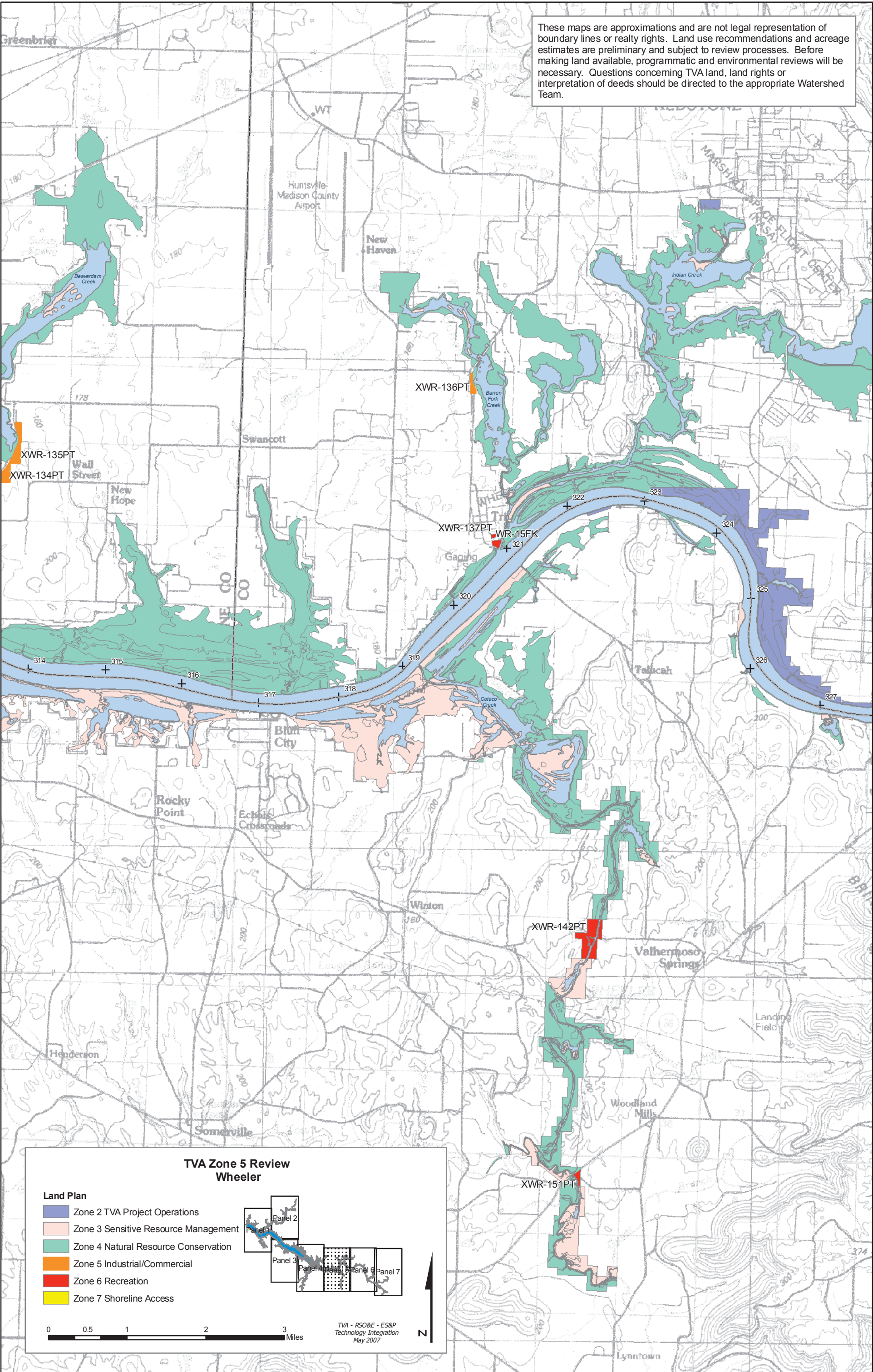
TVA - RSO&E - ES&P  
Technology Integration  
August 2007

N







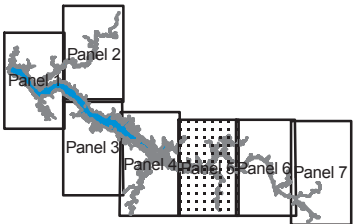


These maps are approximations and are not legal representation of boundary lines or realty rights. Land use recommendations and acreage estimates are preliminary and subject to review processes. Before making land available, programmatic and environmental reviews will be necessary. Questions concerning TVA land, land rights or interpretation of deeds should be directed to the appropriate Watershed Team.

**TVA Zone 5 Review  
Wheeler**

**Land Plan**

- Zone 2 TVA Project Operations
- Zone 3 Sensitive Resource Management
- Zone 4 Natural Resource Conservation
- Zone 5 Industrial/Commercial
- Zone 6 Recreation
- Zone 7 Shoreline Access



0 0.5 1 2 3 Miles

TVA - RSO&E - ES&P  
Technology Integration  
May 2007

N



