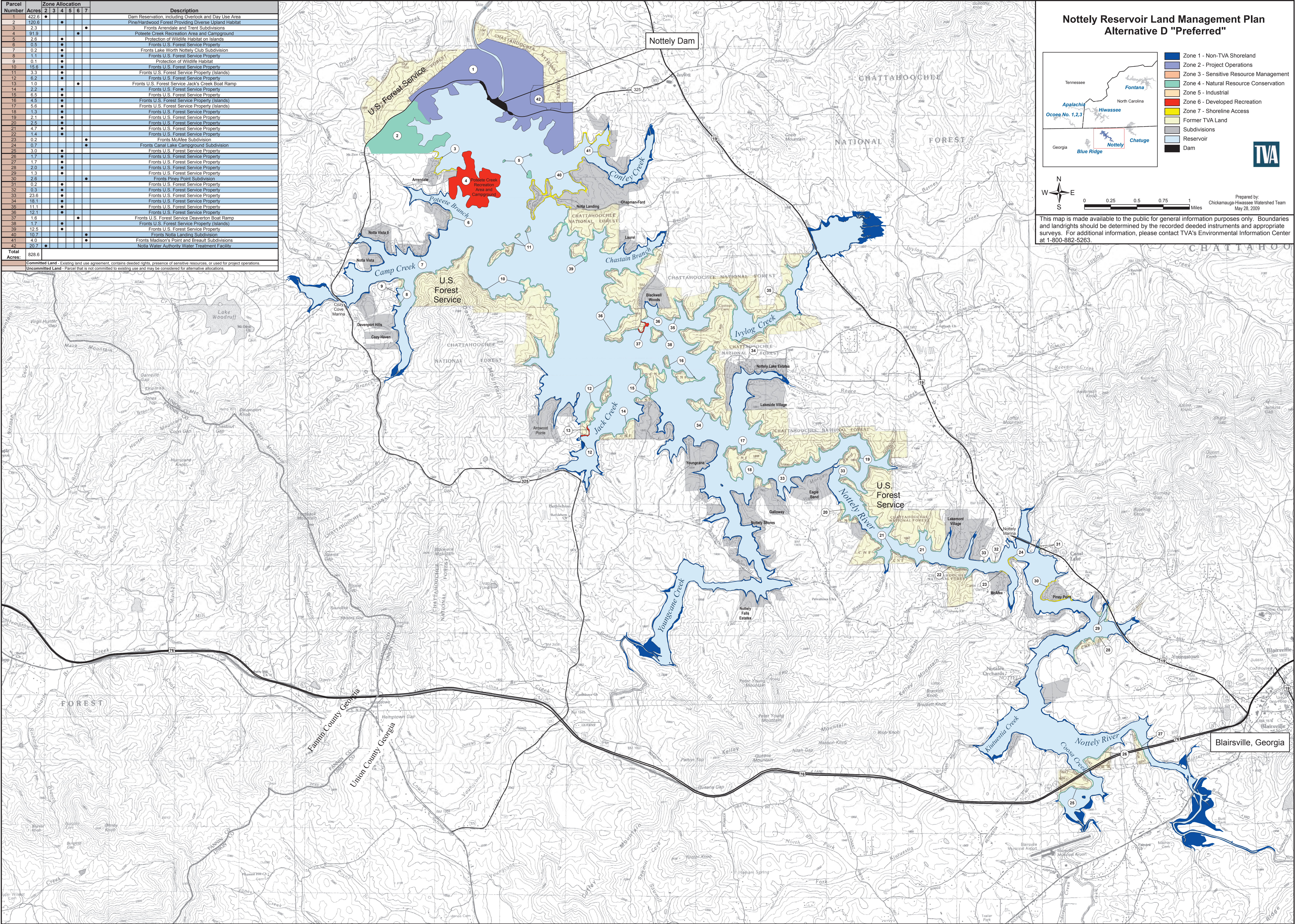
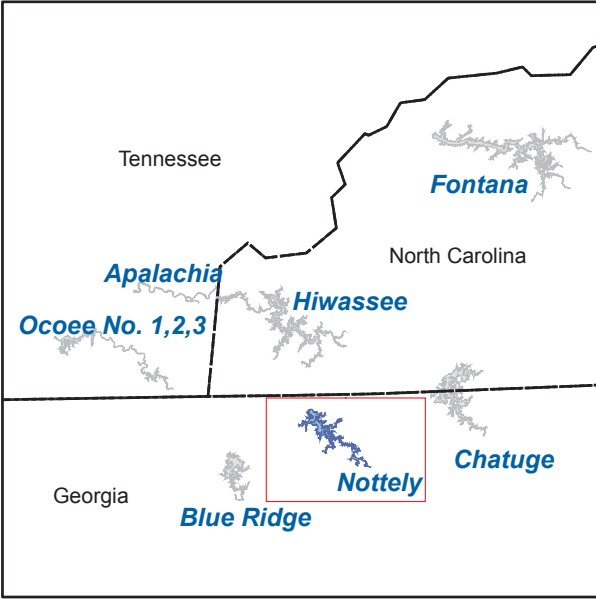


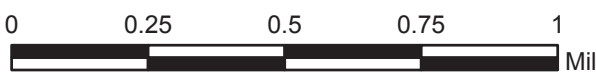
Parcel Number	Acres	Zone Allocation						Description
		2	3	4	5	6	7	
1	422.6	●						Dam Reservation, including Overlook and Day Use Area
2	120.6		●					Pine/Hardwood Forest Providing Diverse Upland Habitat
3	2.3						●	Fronts Arrendale and Trent Subdivisions
4	91.9						●	Poteete Creek Recreation Area and Campground
5	2.6		●					Protection of Wildlife Habitat on Islands
6	0.5		●					Fronts U.S. Forest Service Property
7	0.2		●					Fronts Lake Worth Nottely Club Subdivision
8	1.1		●					Fronts U.S. Forest Service Property
9	0.1		●					Protection of Wildlife Habitat
10	15.6		●					Fronts U.S. Forest Service Property
11	3.3		●					Fronts U.S. Forest Service Property (Islands)
12	6.2		●					Fronts U.S. Forest Service Property
13	1.0		●				●	Fronts U.S. Forest Service Jack's Creek Boat Ramp
14	2.2		●					Fronts U.S. Forest Service Property
15	6.5		●					Fronts U.S. Forest Service Property
16	4.5		●					Fronts U.S. Forest Service Property (Islands)
17	5.6		●					Fronts U.S. Forest Service Property (Islands)
18	1.3		●					Fronts U.S. Forest Service Property
19	2.1		●					Fronts U.S. Forest Service Property
20	2.5		●					Fronts U.S. Forest Service Property
21	4.7		●					Fronts U.S. Forest Service Property
22	1.4		●					Fronts U.S. Forest Service Property
23	0.2					●		Fronts McAfee Subdivision
24	0.7					●		Fronts Canal Lake Campground Subdivision
25	3.0		●					Fronts U.S. Forest Service Property
26	1.7		●					Fronts U.S. Forest Service Property
27	1.7		●					Fronts U.S. Forest Service Property
28	2.0		●					Fronts U.S. Forest Service Property
29	1.3		●					Fronts U.S. Forest Service Property
30	2.6		●					Fronts Piny Point Subdivision
31	0.2		●					Fronts U.S. Forest Service Property
32	0.3		●					Fronts U.S. Forest Service Property
33	23.6		●					Fronts U.S. Forest Service Property
34	16.1		●					Fronts U.S. Forest Service Property
35	11.1		●					Fronts U.S. Forest Service Property
36	12.1		●					Fronts U.S. Forest Service Property
37	1.6					●		Fronts U.S. Forest Service Deaverton Boat Ramp
38	1.7		●					Fronts U.S. Forest Service Property (Islands)
39	12.5		●					Fronts U.S. Forest Service Property
40	10.7						●	Fronts Nolla Landing Subdivision
41	4.0						●	Fronts Madison's Point and Breault Subdivisions
42	20.7	●						Nolla Water Authority Water Treatment Facility
Total Acres:		828.6						
Committed Land - Existing land use agreement, contains deeded rights, presence of sensitive resources, or used for project operations.								
Uncommitted Land - Parcel that is not committed to existing use and may be considered for alternative allocations.								



### Nottely Reservoir Land Management Plan Alternative D "Preferred"



- Zone 1 - Non-TVA Shoreland
- Zone 2 - Project Operations
- Zone 3 - Sensitive Resource Management
- Zone 4 - Natural Resource Conservation
- Zone 5 - Industrial
- Zone 6 - Developed Recreation
- Zone 7 - Shoreline Access
- Former TVA Land
- Subdivisions
- Reservoir
- Dam



Prepared by:  
Chickamauga-Hiwassee Watershed Team  
May 28, 2009

This map is made available to the public for general information purposes only. Boundaries and landrights should be determined by the recorded deeded instruments and appropriate surveys. For additional information, please contact TVA's Environmental Information Center at 1-800-882-5263.