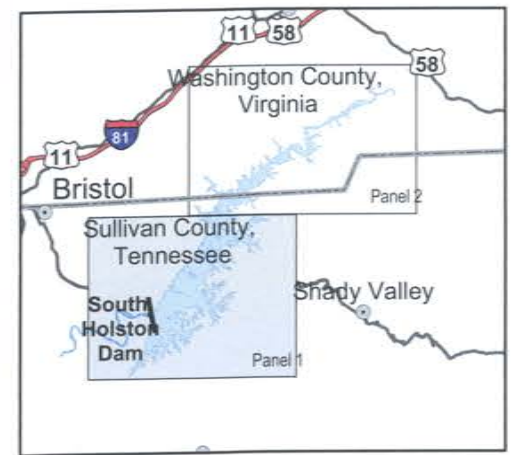


**South Holston Reservoir Land Management Plan
Final Environmental Impact Statement
Panel 1 of 2**



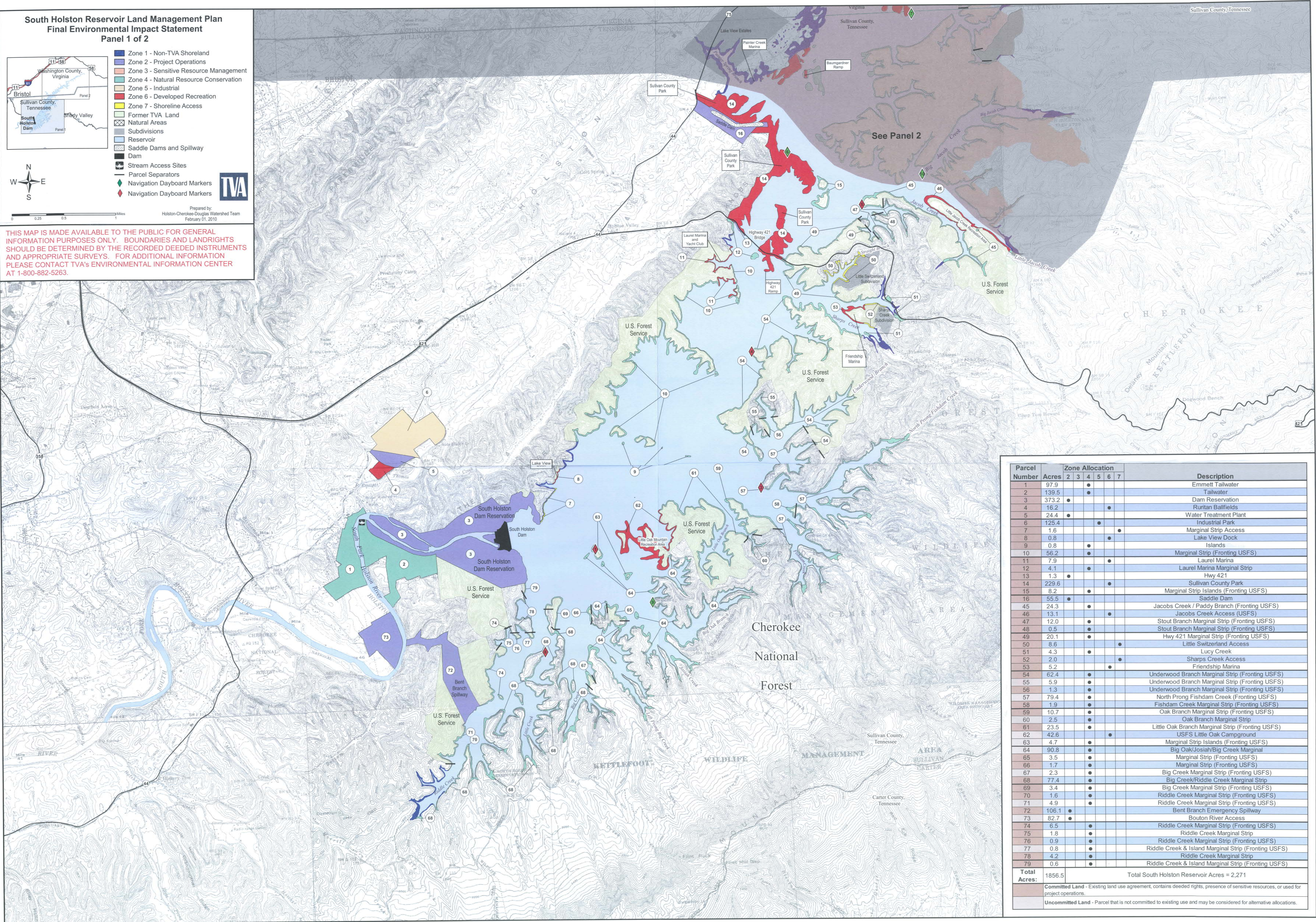
- Zone 1 - Non-TVA Shoreland
- Zone 2 - Project Operations
- Zone 3 - Sensitive Resource Management
- Zone 4 - Natural Resource Conservation
- Zone 5 - Industrial
- Zone 6 - Developed Recreation
- Zone 7 - Shoreline Access
- Former TVA Land
- Natural Areas
- Subdivisions
- Reservoir
- Saddle Dams and Spillway Dam
- Stream Access Sites
- Parcel Separators
- Navigation Dayboard Markers



Prepared by:
Holston-Cherokee-Douglas Watershed Team
February 01, 2010

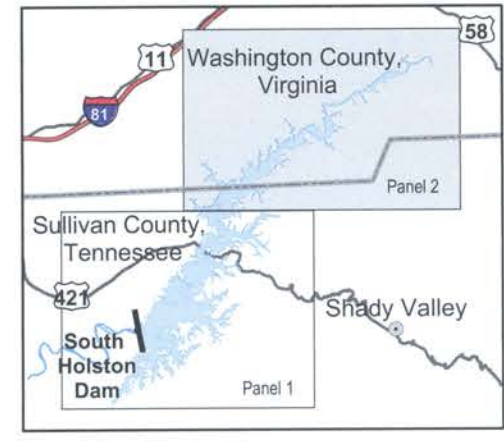


THIS MAP IS MADE AVAILABLE TO THE PUBLIC FOR GENERAL INFORMATION PURPOSES ONLY. BOUNDARIES AND LANDRIGHTS SHOULD BE DETERMINED BY THE RECORDED DEEDED INSTRUMENTS AND APPROPRIATE SURVEYS. FOR ADDITIONAL INFORMATION PLEASE CONTACT TVA'S ENVIRONMENTAL INFORMATION CENTER AT 1-800-882-5263.

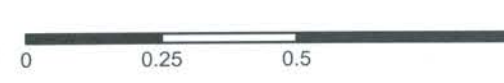


Parcel Number	Acres	Zone Allocation							Description
		2	3	4	5	6	7		
1	97.9							Emmett Tailwater	
2	139.5							Tailwater	
3	373.2							Dam Reservation	
4	16.2							Ruritan Ballfields	
5	24.4							Water Treatment Plant	
6	125.4							Industrial Park	
7	1.6							Marginal Strip Access	
8	0.8							Lake View Dock	
9	0.8							Islands	
10	56.2							Marginal Strip (Fronting USFS)	
11	7.9							Laurel Marina	
12	4.1							Laurel Marina Marginal Strip	
13	1.3							Hwy 421	
14	229.6							Sullivan County Park	
15	8.2							Marginal Strip Islands (Fronting USFS)	
16	55.5							Saddle Dam	
45	24.3							Jacobs Creek / Paddy Branch (Fronting USFS)	
46	13.1							Jacobs Creek Access (USFS)	
47	12.0							Stout Branch Marginal Strip (Fronting USFS)	
48	0.5							Stout Branch Marginal Strip (Fronting USFS)	
49	20.1							Hwy 421 Marginal Strip (Fronting USFS)	
50	8.6							Little Switzerland Access	
51	4.3							Lucy Creek	
52	2.0							Sharps Creek Access	
53	5.2							Friendship Marina	
54	62.4							Underwood Branch Marginal Strip (Fronting USFS)	
55	5.9							Underwood Branch Marginal Strip (Fronting USFS)	
56	1.3							Underwood Branch Marginal Strip (Fronting USFS)	
57	79.4							North Prong Fishdam Creek (Fronting USFS)	
58	1.9							Fishdam Creek Marginal Strip (Fronting USFS)	
59	10.7							Oak Branch Marginal Strip (Fronting USFS)	
60	2.5							Oak Branch Marginal Strip	
61	23.5							Little Oak Branch Marginal Strip (Fronting USFS)	
62	42.6							USFS Little Oak Campground	
63	4.7							Marginal Strip Islands (Fronting USFS)	
64	90.8							Big Oak/Josiah/Big Creek Marginal Strip (Fronting USFS)	
65	3.5							Marginal Strip (Fronting USFS)	
66	1.7							Marginal Strip (Fronting USFS)	
67	2.3							Big Creek Marginal Strip (Fronting USFS)	
68	77.4							Big Creek/Riddle Creek Marginal Strip (Fronting USFS)	
69	3.4							Big Creek Marginal Strip (Fronting USFS)	
70	1.6							Riddle Creek Marginal Strip (Fronting USFS)	
71	4.9							Riddle Creek Marginal Strip (Fronting USFS)	
72	106.1							Bent Branch Emergency Spillway	
73	82.7							Bouton River Access	
74	6.5							Riddle Creek Marginal Strip (Fronting USFS)	
75	1.8							Riddle Creek Marginal Strip	
76	0.9							Riddle Creek Marginal Strip (Fronting USFS)	
77	0.8							Riddle Creek & Island Marginal Strip (Fronting USFS)	
78	4.2							Riddle Creek Marginal Strip	
79	0.6							Riddle Creek & Island Marginal Strip (Fronting USFS)	
Total Acres:	1856.5	Total South Holston Reservoir Acres = 2,271							
Committed Land - Existing land use agreement, contains deeded rights, presence of sensitive resources, or used for project operations.									
Uncommitted Land - Parcel that is not committed to existing use and may be considered for alternative allocations.									

**South Holston Reservoir
Land Management Plan
Final Environmental Impact Statement
Panel 2 of 2**



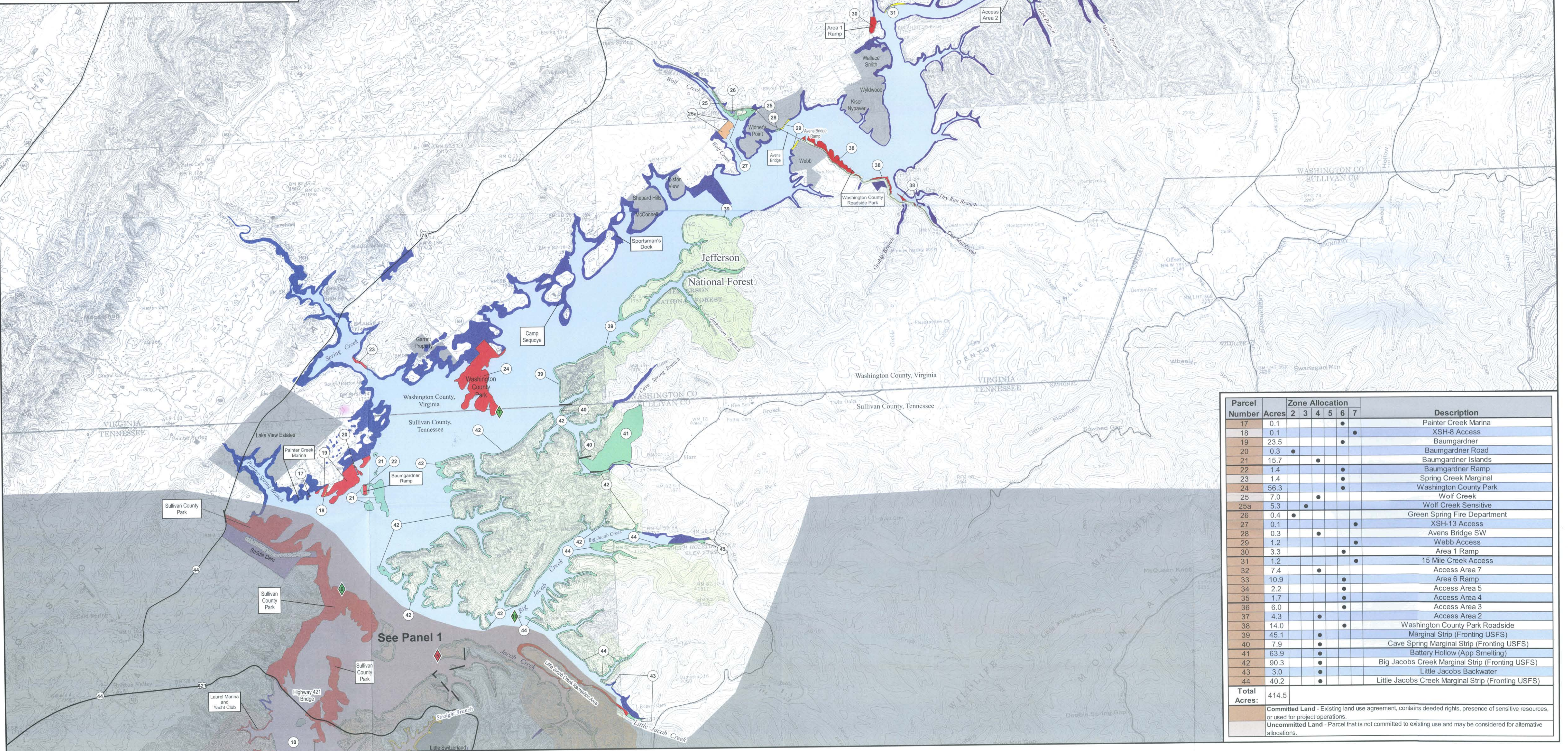
- Zone 1 - Non-TVA Shoreland
- Zone 2 - Project Operations
- Zone 3 - Sensitive Resource Management
- Zone 4 - Natural Resource Conservation
- Zone 5 - Industrial
- Zone 6 - Developed Recreation
- Zone 7 - Shoreline Access
- Former TVA Land
- Natural Areas
- Subdivisions
- Reservoir
- Saddle Dams and Spillway
- Dam
- Stream Access Sites
- Parcel Separators
- Navigation Dayboard Markers
- Navigation Dayboard Markers



Prepared by:
Holston-Cherokee-Douglas Watershed Team
February 02, 2010



THIS MAP IS MADE AVAILABLE TO THE PUBLIC FOR GENERAL INFORMATION PURPOSES ONLY. BOUNDARIES AND LANDRIGHTS SHOULD BE DETERMINED BY THE RECORDED DEEDED INSTRUMENTS AND APPROPRIATE SURVEYS. FOR ADDITIONAL INFORMATION, PLEASE CONTACT TVA'S ENVIRONMENTAL INFORMATION CENTER AT 1-800-892-5263.



Parcel Number	Acres	Zone Allocation							Description
		2	3	4	5	6	7		
17	0.1							●	Painter Creek Marina
18	0.1							●	XSH-8 Access
19	23.5							●	Baumgardner
20	0.3	●							Baumgardner Road
21	15.7							●	Baumgardner Islands
22	1.4							●	Baumgardner Ramp
23	1.4							●	Spring Creek Marginal
24	56.3							●	Washington County Park
25	7.0							●	Wolf Creek
25a	5.3	●							Wolf Creek Sensitive
26	0.4							●	Green Spring Fire Department
27	0.1							●	XSH-13 Access
28	0.3							●	Avens Bridge SW
29	1.2							●	Webb Access
30	3.3							●	Area 1 Ramp
31	1.2							●	15 Mile Creek Access
32	7.4							●	Access Area 7
33	10.9							●	Area 6 Ramp
34	2.2							●	Access Area 5
35	1.7							●	Access Area 4
36	6.0							●	Access Area 3
37	4.3							●	Access Area 2
38	14.0							●	Washington County Park Roadside
39	45.1							●	Marginal Strip (Fronting USFS)
40	7.9							●	Cave Spring Marginal Strip (Fronting USFS)
41	63.9							●	Battery Hollow (App Smelting)
42	90.3							●	Big Jacobs Creek Marginal Strip (Fronting USFS)
43	3.0							●	Little Jacobs Backwater
44	40.2							●	Little Jacobs Creek Marginal Strip (Fronting USFS)
Total	414.5								

Committed Land - Existing land use agreement, contains deeded rights, presence of sensitive resources, or used for project operations.
Uncommitted Land - Parcel that is not committed to existing use and may be considered for alternative allocations.