

# Tellico Land Planning Allocation Map

Panel 1

- Zone 1 - Non-TVA Land
- Zone 2 - Project Operations
- Zone 3 - Sensitive Resource Management
- Zone 4 - Natural Resource Conservation
- Zone 5 - Industrial/Commercial
- Zone 6 - Recreation
- Zone 7 - Residential Development
- TRDA - Residential
- TRDA Commercial Recreation
- TRDA - Industrial
- TRDA Cultural/Public Use/Open Space
- Monroe County - Industrial

- Highway
- Subdivisions
- River Corridor
- Sensitive Wetlands Area
- Navigation: Day Boards
- Hydrologic Unit Code (HUC) Boundary
- 06010204-090 = Hydrologic Unit Code (HUC) ID No.
- NS = Navigation Safety Harbor/Safety Landing
- R = Ramp



3000 0 3000 6000 Feet

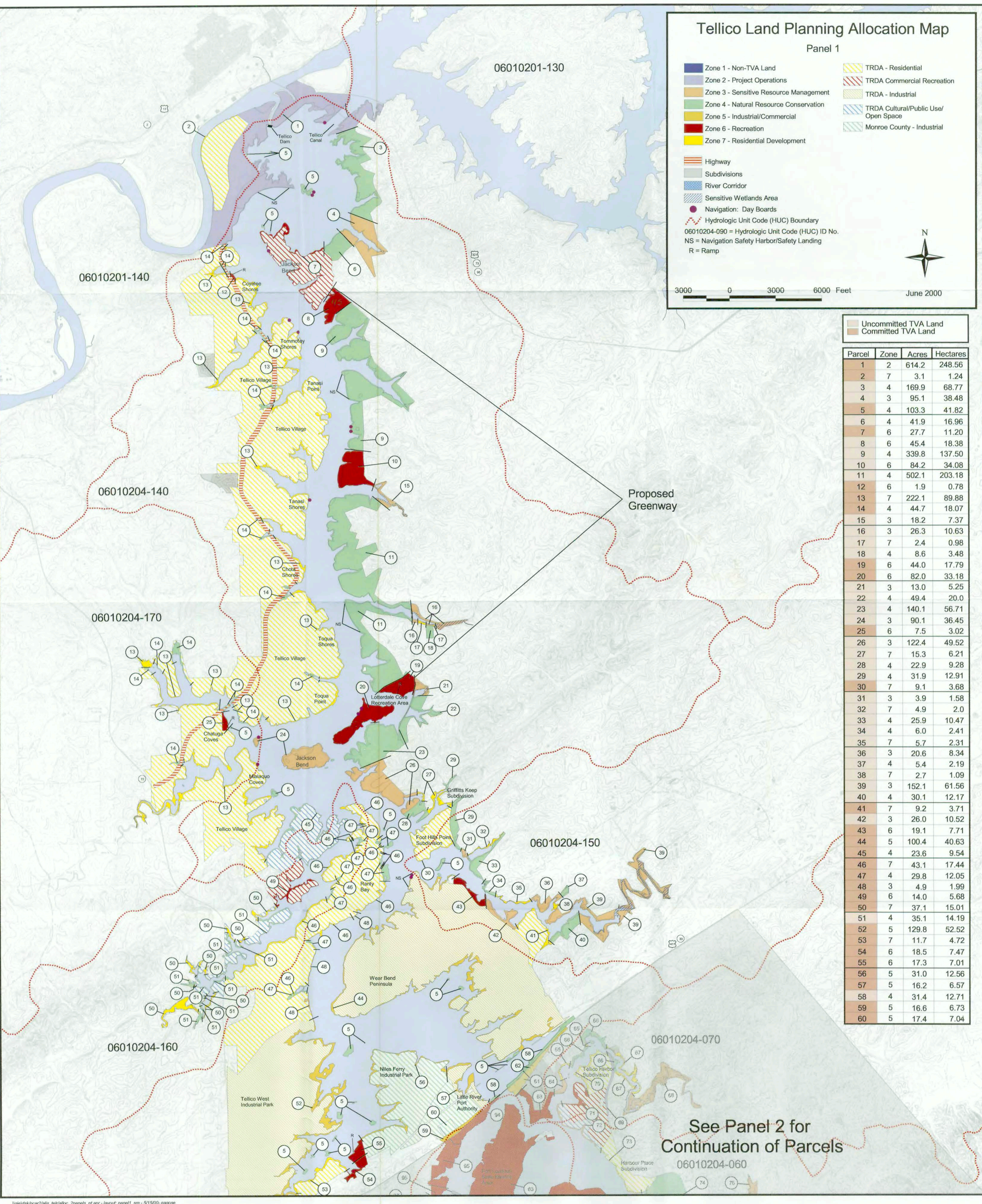
June 2000

Uncommitted TVA Land  
 Committed TVA Land

Parcel	Zone	Acres	Hectares
1	2	614.2	248.56
2	7	3.1	1.24
3	4	169.9	68.77
4	3	95.1	38.48
5	4	103.3	41.82
6	4	41.9	16.96
7	6	27.7	11.20
8	6	45.4	18.38
9	4	339.8	137.50
10	6	84.2	34.08
11	4	502.1	203.18
12	6	1.9	0.78
13	7	222.1	89.88
14	4	44.7	18.07
15	3	18.2	7.37
16	3	26.3	10.63
17	7	2.4	0.98
18	4	8.6	3.48
19	6	44.0	17.79
20	6	82.0	33.18
21	3	13.0	5.25
22	4	49.4	20.0
23	4	140.1	56.71
24	3	90.1	36.45
25	6	7.5	3.02
26	3	122.4	49.52
27	7	15.3	6.21
28	4	22.9	9.28
29	4	31.9	12.91
30	7	9.1	3.68
31	3	3.9	1.58
32	7	4.9	2.0
33	4	25.9	10.47
34	4	6.0	2.41
35	7	5.7	2.31
36	3	20.6	8.34
37	4	5.4	2.19
38	7	2.7	1.09
39	3	152.1	61.56
40	4	30.1	12.17
41	7	9.2	3.71
42	3	26.0	10.52
43	6	19.1	7.71
44	5	100.4	40.63
45	4	23.6	9.54
46	7	43.1	17.44
47	4	29.8	12.05
48	3	4.9	1.99
49	6	14.0	5.68
50	7	37.1	15.01
51	4	35.1	14.19
52	5	129.8	52.52
53	7	11.7	4.72
54	6	18.5	7.47
55	6	17.3	7.01
56	5	31.0	12.56
57	5	16.2	6.57
58	4	31.4	12.71
59	5	16.6	6.73
60	5	17.4	7.04

Proposed Greenway

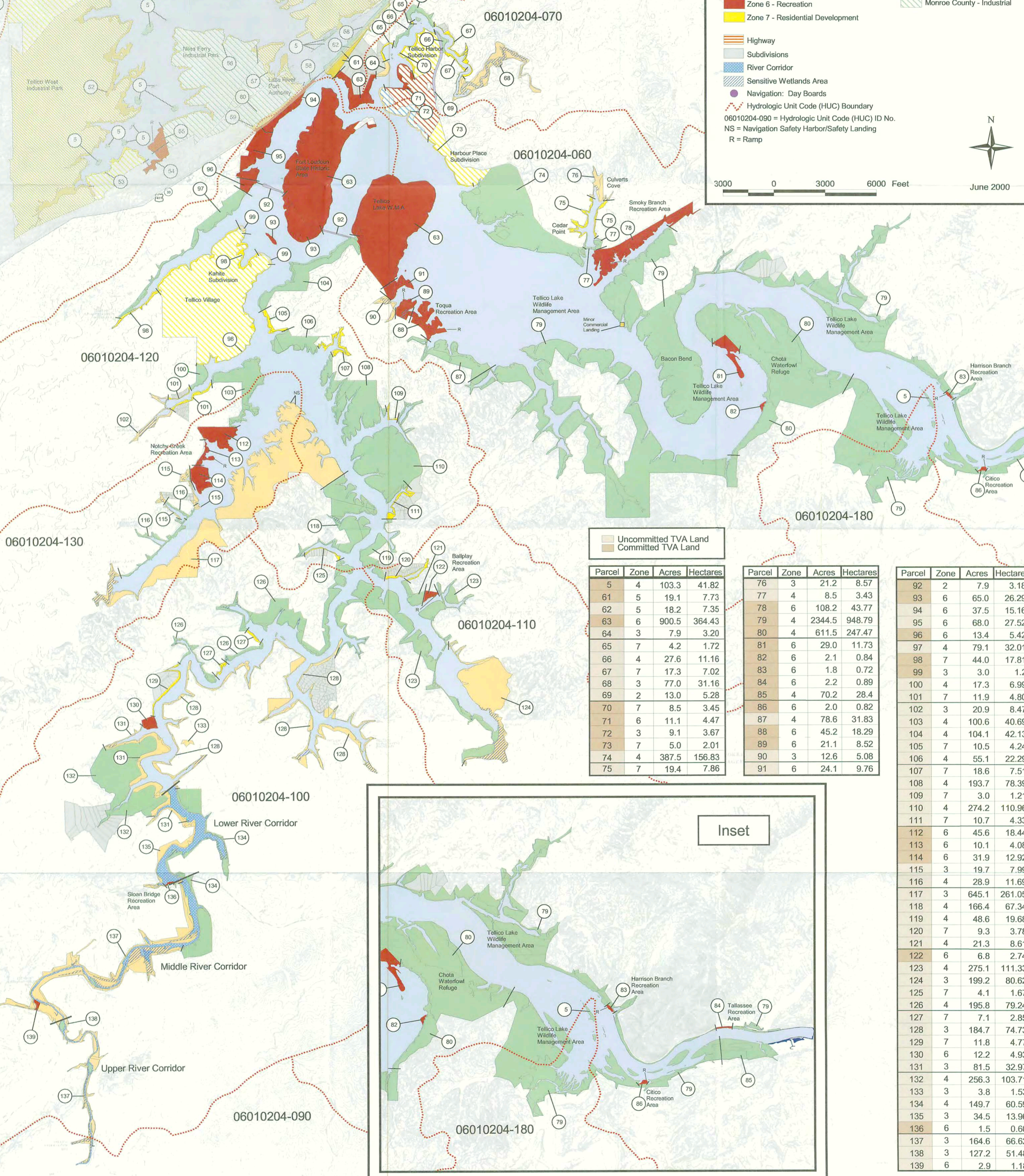
See Panel 2 for Continuation of Parcels



# Tellico Land Planning Allocation Map

Panel 2

See Panel 1 for Continuation of Parcels

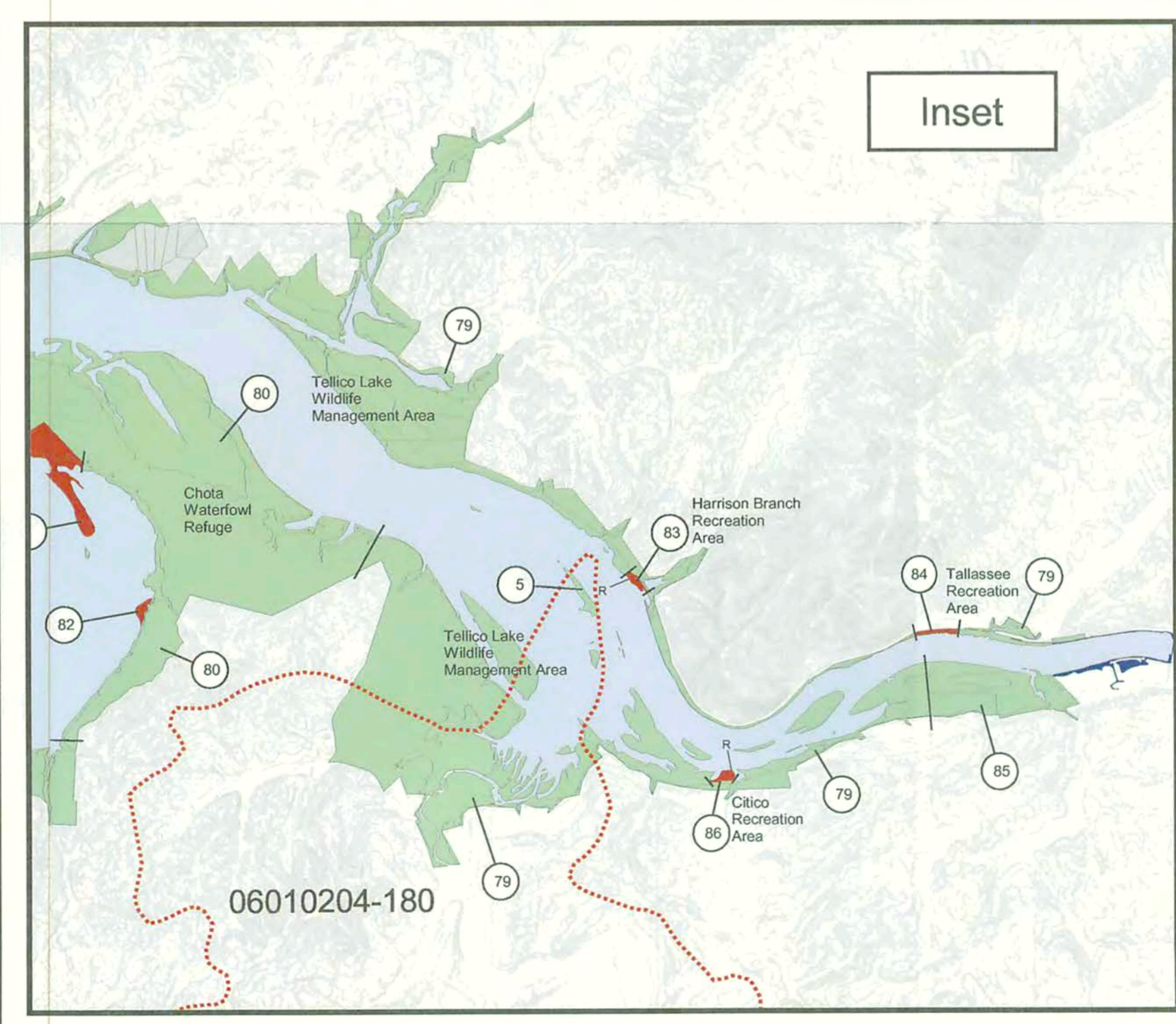


Uncommitted TVA Land  
Committed TVA Land

Parcel	Zone	Acres	Hectares
5	4	103.3	41.82
61	5	19.1	7.73
62	5	18.2	7.35
63	6	900.5	364.43
64	3	7.9	3.20
65	7	4.2	1.72
66	4	27.6	11.16
67	7	17.3	7.02
68	3	77.0	31.16
69	2	13.0	5.28
70	7	8.5	3.45
71	6	11.1	4.47
72	3	9.1	3.67
73	7	5.0	2.01
74	4	387.5	156.83
75	7	19.4	7.86

Parcel	Zone	Acres	Hectares
76	3	21.2	8.57
77	4	8.5	3.43
78	6	108.2	43.77
79	4	2344.5	948.79
80	4	611.5	247.47
81	6	29.0	11.73
82	6	2.1	0.84
83	6	1.8	0.72
84	6	2.2	0.89
85	4	70.2	28.4
86	6	2.0	0.82
87	4	78.6	31.83
88	6	45.2	18.29
89	6	21.1	8.52
90	3	12.6	5.08
91	6	24.1	9.76

Parcel	Zone	Acres	Hectares
92	2	7.9	3.18
93	6	65.0	26.29
94	6	37.5	15.16
95	6	68.0	27.52
96	6	13.4	5.42
97	4	79.1	32.01
98	7	44.0	17.81
99	3	3.0	1.2
100	4	17.3	6.99
101	7	11.9	4.80
102	3	20.9	8.47
103	4	100.6	40.69
104	4	104.1	42.13
105	7	10.5	4.24
106	4	55.1	22.29
107	7	18.6	7.51
108	4	193.7	78.39
109	7	3.0	1.21
110	4	274.2	110.96
111	7	10.7	4.33
112	6	45.6	18.44
113	6	10.1	4.08
114	6	31.9	12.92
115	3	19.7	7.99
116	4	28.9	11.69
117	3	645.1	261.05
118	4	166.4	67.34
119	4	48.6	19.68
120	7	9.3	3.78
121	4	21.3	8.61
122	6	6.8	2.74
123	4	275.1	111.33
124	3	199.2	80.62
125	7	4.1	1.67
126	4	195.8	79.24
127	7	7.1	2.85
128	3	184.7	74.73
129	7	11.8	4.77
130	6	12.2	4.93
131	3	81.5	32.97
132	4	256.3	103.71
133	3	3.8	1.53
134	4	149.7	60.59
135	3	34.5	13.96
136	6	1.5	0.60
137	3	164.6	66.62
138	3	127.2	51.48
139	6	2.9	1.18



Inset