



Tims Ford Reservoir Land Management and Disposition Plan Error – XTMFR–88PT

Reservoir Land Planning Errors

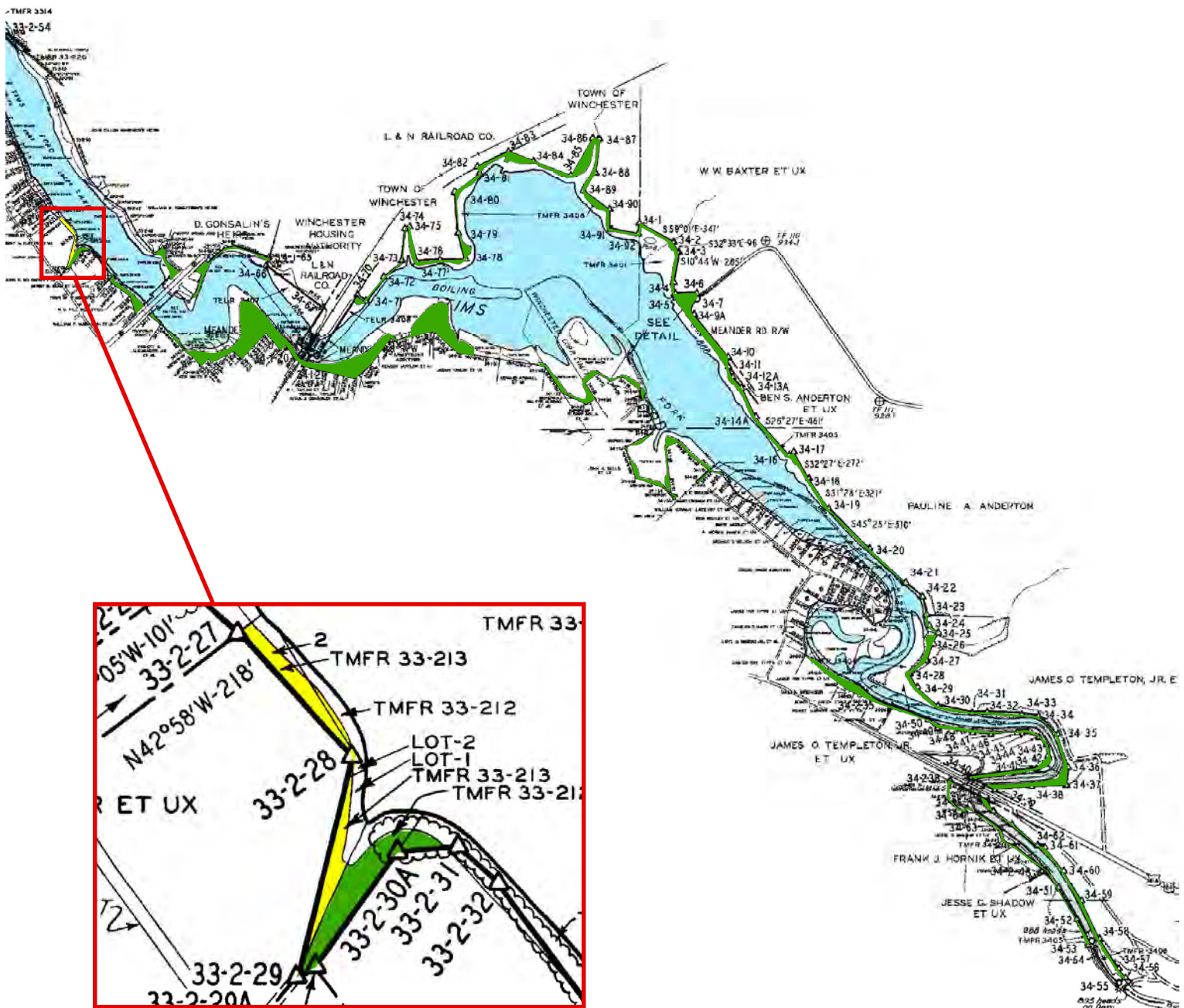
After approval of a reservoir land management plan (RLMP) by the Tennessee Valley Authority (TVA), all future uses of TVA–managed lands on that reservoir must then be consistent with the allocations within that RLMP. The land management zone allocations for certain portions of TVA–managed lands fronting privately–developed subdivisions have the potential to conflict with previous permitting practices as described in the 2000 Tims Ford Reservoir Land Management and Disposition Plan (RLM&DP). The RLM&DP states that existing privately–developed subdivisions, which were historically allowed permits and licenses for private water use facilities, would be allowed to continue this practice in the future. In certain cases, the TVA–managed lands fronting a portion of these privately–developed subdivisions were designated as “Natural Resource Conservation.” The resolution of these potential conflicts has resulted in the reallocation of the TVA–managed land to “Shoreline Access” fronting the privately–developed subdivision in its entirety. This document addresses the reallocation of a portion of Tims Ford RLM&DP Tract No. XTMFR–88PT. Definitions of TVA’s land planning allocations are located on TVA’s Web site, <http://www.tva.com/environment/reports/nrp/index.htm>.

General Information about Tims Ford Reservoir

Tims Ford Reservoir is an impoundment of the Elk River formed by Tims Ford Dam, which is located at Elk River mile 133.3 in Franklin County, Tennessee. Tims Ford Reservoir is located in parts of Franklin and Moore counties. TVA and the Tennessee Elk River Development Agency originally acquired 21,863 acres of land for construction of the reservoir, which was completed in 1970. TVA and the State of Tennessee have retained 8,247 acres of land lying above the 895–foot mean sea level elevation. At full pool, the reservoir is 34 miles long with a surface area of 10,680 acres.

Tims Ford RLM&DP Tract No. XTMFR–88PT

XTMFR–88PT is located in Franklin County, Tennessee, along the left descending bank of Boiling Fork Creek mile 4.1. In the RLM&DP, XTMFR–88PT was designated as “Natural Resource Conservation.” However, a portion of XTMFR–88PT fronts Driver’s Hill Subdivision, a privately–developed subdivision with previously permitted water use facilities. In order to resolve the potential conflict from the RLM&DP designation, XTMFR–88PT is modified to consist of XTMFR–88aPT and XTMFR–88PT (Figure 1). XTMFR–88aPT fronts Driver’s Hill Subdivision and occupies approximately 320 feet of shoreline. XTMFR–88aPT is designated as “Shoreline Access” and requests for private water use facilities will be considered. XTMFR–88PT consists of the remainder of the original reservoir land tract and remains designated as “Natural Resource Conservation.”



- XTMFR-88PT - Area To Remain Zone 4 (Approximately 23.3 acres)
- XTMFR-88aPT - Area To Be Reallocated To Zone 7 (Approximately 0.2 acre)

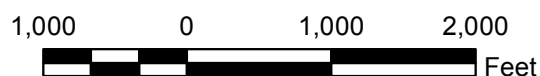
Exhibit Map

Proposed Allocation Change

Franklin County, Tennessee

XTMFR-88PT

Boiling Fork Creek Mile 5L



Map Reference:
D-Stage: 33-2
Quad: 87NE



Property and
Natural Resources



Tims Ford Reservoir Land Management and Disposition Plan Map Error of Tract No. XTMFR–88bPT

Tims Ford Reservoir Land Planning Omission

As a joint effort between the Tennessee Valley Authority (TVA) and the State of Tennessee, the TVA Board of Directors approved the Tims Ford Reservoir Land Management and Disposition Plan (RLM&DP) on August 29, 2000. Since that time, TVA and the State of Tennessee have exchanged certain properties pursuant to the RLM&DP. TVA now has the custody and control of two parcels of land (Tract Nos. XTMFR–54aPT and XTMFR–88bPT) that were not depicted on the RLM&DP maps. This document addresses the allocation and correct mapping of Tract No. XTMFR–88bPT and is considered a supplement to the RLM&DP. Definitions of TVA's land planning allocations are located on TVA's Web site, <http://www.tva.com/environment/reports/nrp/index.htm>.

General Information about Tims Ford Reservoir

Tims Ford Reservoir is an impoundment of the Elk River formed by Tims Ford Dam, which is located at Elk River mile 133.3 in Franklin County, Tennessee. Tims Ford Reservoir is located in parts of Franklin and Moore counties. TVA and the Tennessee Elk River Development Agency originally acquired 21,863 acres of land for construction of the reservoir, which was completed in 1970. TVA and the State of Tennessee have retained 8,247 acres of land lying above the 895-foot mean sea level elevation. At full pool, the reservoir is 34 miles long with a surface area of 10,680 acres.

Tims Ford RLM&DP Tract No. XTMFR–88bPT

XTMFR–88bPT (also known as TVA Acquisition Tract No. TMFR–3520 and shown in Figure 1) is located in Franklin County, Tennessee, along the right descending bank of Boiling Fork Creek mile 4.6. This parcel of land is not encumbered with contractual agreements, and the current land cover is deciduous hardwoods. XTMFR–88bPT is designated as “Natural Resource Conservation” and requests for private water use facilities will not be considered.

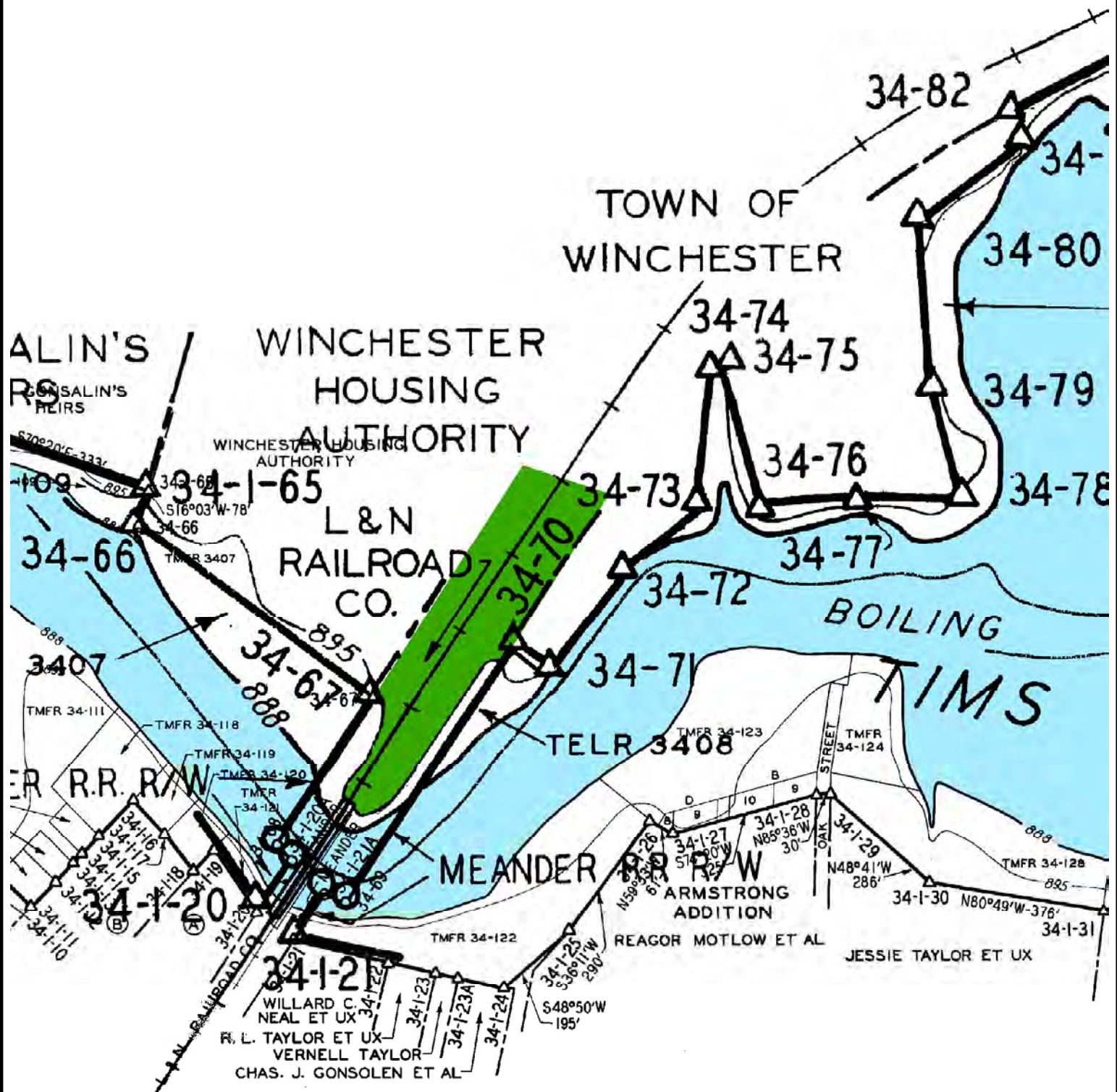



Exhibit Map Proposed Allocation Change Franklin County, Tennessee XTMFR-88bPT Boiling Fork Creek Mile 5.4R

 XTMFR-88bPT - Area To
 Be Allocated To Zone 4
 (Approximately 3.1 acres)

250 0 250 500
 Feet

Map Reference:
 D-Stage: 34
 Quad: 87NE



Property and
 Natural Resources



Tims Ford Reservoir Land Management Plan and Disposition Plan Error – XTMFR–88–1PT

Reservoir Land Planning Errors

After approval of a reservoir land management plan by the Tennessee Valley Authority (TVA), all future uses of TVA–managed lands on that reservoir must then be consistent with the allocations within that RLMP. The land management zone allocations for certain portions of TVA–managed lands fronting privately–developed subdivisions have the potential to conflict with previous permitting practices as described in the 2000 Tims Ford Reservoir Land Management and Disposition Plan (RLM&DP). The RLM&DP states that existing privately–developed subdivisions, which were historically allowed permits and licenses for private water use facilities, would be allowed to continue this practice in the future. In certain cases, the TVA–managed lands fronting a portion of these privately–developed subdivisions were designated as “Conservation Partnership.” The resolution of these potential conflicts has resulted in the reallocation of the TVA–managed land to “Shoreline Access” fronting the privately–developed subdivision in its entirety. This document addresses the reallocation of Tims Ford RLM&DP Tract No. XTMFR–88–1PT. Definitions of TVA’s land planning allocations are located on TVA’s Web site, <http://www.tva.com/environment/reports/nrp/index.htm>.

General Information about Tims Ford Reservoir

Tims Ford Reservoir is an impoundment of the Elk River formed by Tims Ford Dam, which is located at Elk River mile 133.3 in Franklin County, Tennessee. Tims Ford Reservoir is located in parts of Franklin and Moore counties. TVA and the Tennessee Elk River Development Agency originally acquired 21,863 acres of land for construction of the reservoir, which was completed in 1970. TVA and the State of Tennessee have retained 8,247 acres of land lying above the 895–foot mean sea level elevation. At full pool, the reservoir is 34 miles long with a surface area of 10,680 acres.

Tims Ford RLM&DP Tract No. XTMFR–88–1PT

XTMFR–88–1PT is located in Franklin County, Tennessee, along the right descending bank of Boiling Fork Creek mile 4.1. In the RLM&DP, XTMFR–88–1PT was designated as “Conservation Partnership.” However, XTMFR–88–1PT fronts JH Stroud Subdivision, a privately–developed subdivision with a previously permitted water use facility. In order to resolve the potential conflict from the RLM&DP, the designation of XTMFR–88–1PT is modified to “Shoreline Access,” and requests for private water use facilities will be considered.

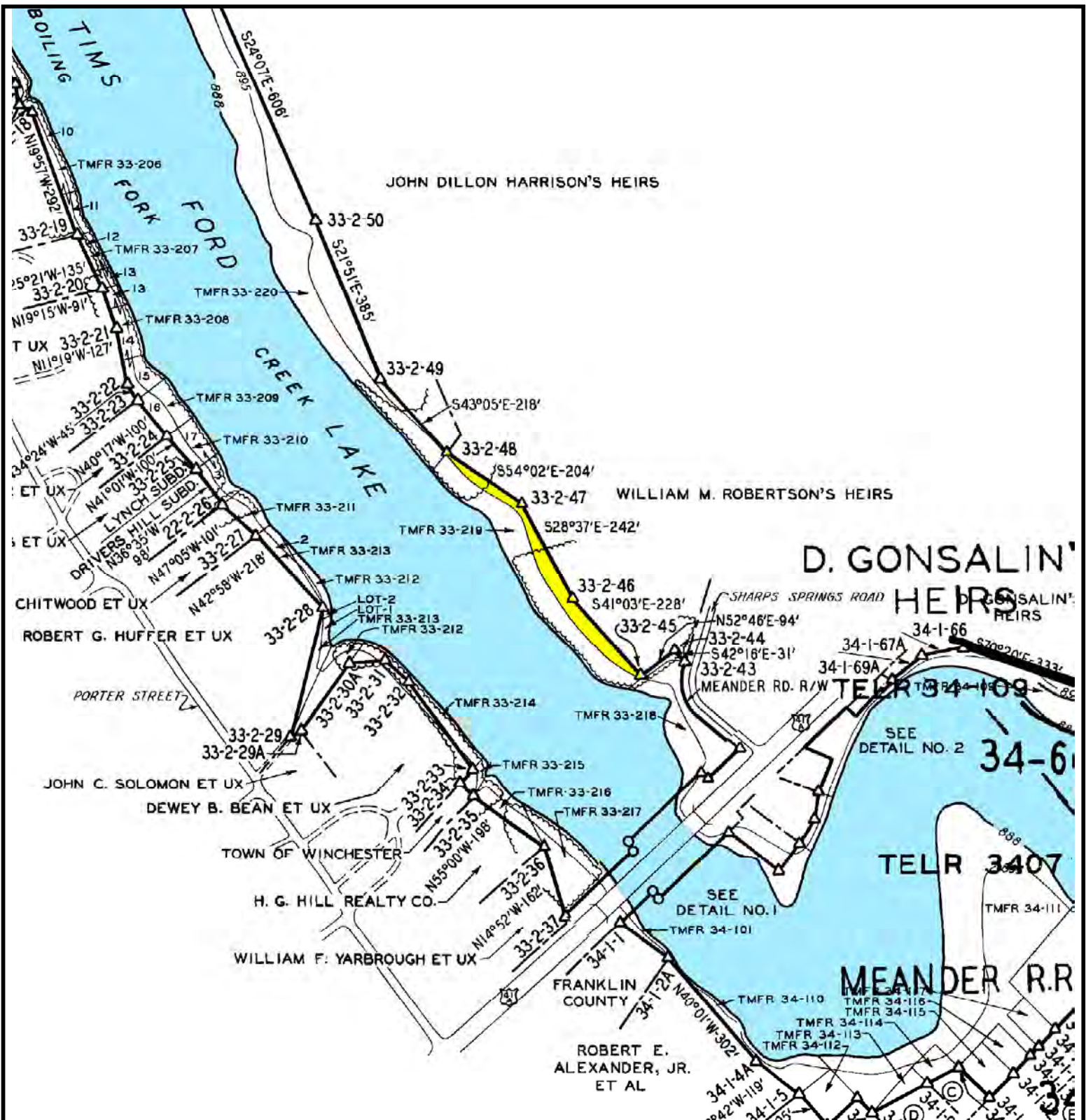



Exhibit Map Proposed Allocation Change Franklin County, Tennessee XTMFR-88-1PT Boiling Fork Creek Mile 5R

 XTMFR-88-1PT - Area
To Be Reallocated From
Zone 8 To Zone 7
(Approximately 0.4 acre)

250 0 250 500
 Feet

Map Reference:
D-Stage: 33-2
Quad: 87NE



Property and
Natural Resources



Tims Ford Reservoir Land Management and Disposition Plan Error – XTMFR–86PT

Reservoir Land Planning Errors

After approval of a reservoir land management plan (RLMP) by the Tennessee Valley Authority (TVA), all future uses of TVA–managed lands on that reservoir must then be consistent with the allocations within that RLMP. The land management zone allocations for certain portions of TVA–managed lands fronting privately–developed subdivisions have the potential to conflict with previous permitting practices as described in the 2000 Tims Ford Reservoir Land Management and Disposition Plan (RLM&DP). The RLM&DP states that existing privately–developed subdivisions, which were historically allowed permits and licenses for private water use facilities, would be allowed to continue this practice in the future. In certain cases, the TVA–managed lands fronting a portion of these privately–developed subdivisions were designated as “Natural Resource Conservation.” The resolution of these potential conflicts has resulted in the reallocation of the TVA–managed land to “Shoreline Access” fronting the privately–developed subdivision in its entirety. This document addresses the reallocation of a portion of Tims Ford RLM&DP Tract No. XTMFR–86PT. Definitions of TVA’s land planning allocations are located on TVA’s Web site, <http://www.tva.com/environment/reports/nrp/index.htm>.

General Information about Tims Ford Reservoir

Tims Ford Reservoir is an impoundment of the Elk River formed by Tims Ford Dam, which is located at Elk River mile 133.3 in Franklin County, Tennessee. Tims Ford Reservoir is located in parts of Franklin and Moore counties. TVA and the Tennessee Elk River Development Agency originally acquired 21,863 acres of land for construction of the reservoir, which was completed in 1970. TVA and the State of Tennessee have retained 8,247 acres of land lying above the 895–foot mean sea level elevation. At full pool, the reservoir is 34 miles long with a surface area of 10,680 acres.

Tims Ford RLM&DP Tract No. XTMFR–86PT

XTMFR–86PT is located in Franklin County, Tennessee, along both banks of Boiling Fork Creek mile 2.5. In the RLM&DP, XTMFR–86PT was designated as “Natural Resource Conservation.” However, a portion of XTMFR–86PT fronts Winchester Village Subdivision, a privately–developed subdivision with previously permitted water use facilities. In order to resolve the potential conflict from the RLM&DP designation, XTMFR–86PT is modified to consist of XTMFR–86aPT and XTMFR–86PT (Figure 1). XTMFR–86aPT fronts Winchester Village Subdivision and occupies approximately 1,732 feet of shoreline. XTMFR–86aPT is designated as “Shoreline Access” and requests for private water use facilities will be considered. XTMFR–86PT consists of the remainder of the original reservoir land tract and remains designated as “Natural Resource Conservation.”



Tims Ford Reservoir Land Management and Disposition Plan Error – XTMFR–59PT

Reservoir Land Planning Errors

After approval of a reservoir land management plan by the Tennessee Valley Authority (TVA), all future uses of TVA–managed lands on that reservoir must then be consistent with the allocations within that RLMP. The land management zone allocations for certain portions of TVA–managed lands fronting privately–developed subdivisions have the potential to conflict with previous permitting practices as described in the 2000 Tims Ford Reservoir Land Management and Disposition Plan (RLM&DP). The RLM&DP states that existing privately–developed subdivisions, which were historically allowed permits and licenses for private water use facilities, would be allowed to continue this practice in the future. In certain cases, the TVA–managed lands fronting a portion of these privately–developed subdivisions were designated as “Natural Resource Conservation.” The resolution of these potential conflicts has resulted in the reallocation of the TVA–managed land to “Shoreline Access” fronting the privately–developed subdivision in its entirety. This document addresses the reallocation of a portion of Tims Ford RLM&DP Tract No. XTMFR–59PT. Definitions of TVA’s land planning allocations are located on TVA’s Web site, <http://www.tva.com/environment/reports/nrp/index.htm>.

General Information about Tims Ford Reservoir

Tims Ford Reservoir is an impoundment of the Elk River formed by Tims Ford Dam, which is located at Elk River mile 133.3 in Franklin County, Tennessee. Tims Ford Reservoir is located in parts of Franklin and Moore counties. TVA and the Tennessee Elk River Development Agency originally acquired 21,863 acres of land for construction of the reservoir, which was completed in 1970. TVA and the State of Tennessee have retained 8,247 acres of land lying above the 895–foot mean sea level elevation. At full pool, the reservoir is 34 miles long with a surface area of 10,680 acres.

Tims Ford RLM&DP Tract No. XTMFR–59PT

XTMFR–59PT is located in Franklin County, Tennessee, along the left descending bank of Rock Creek mile 0.7. In the RLM&DP, XTMFR–59PT was designated as “Natural Resource Conservation.” However, a portion of XTMFR–59PT fronts Westwood Shores Subdivision, a privately–developed subdivision with previously permitted water use facilities. In order to resolve the potential conflict from the RLM&DP designation, XTMFR–59PT is modified to consist of XTMFR–59bPT and XTMFR–59PT (Figure 1). XTMFR–59bPT fronts Westwood Shores Subdivision and occupies approximately 35 feet of shoreline. XTMFR–59bPT is designated as “Shoreline Access” and requests for private water use facilities will be considered. XTMFR–59PT consists of the remainder of the original reservoir land tract and remains designated as “Natural Resource Conservation.”

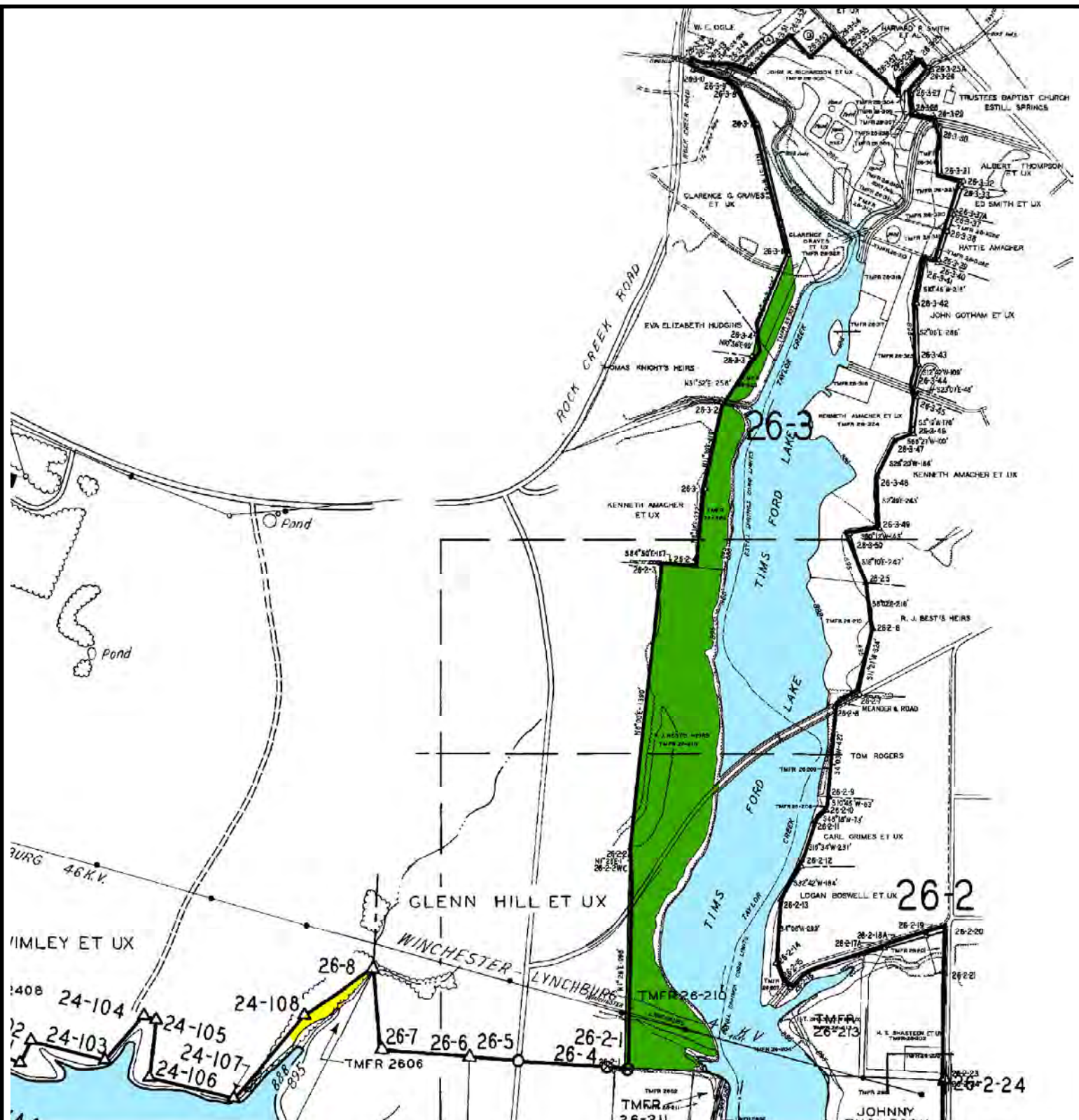


Exhibit Map Proposed Allocation Change Franklin County, Tennessee XTMFR-59PT Elk River Mile 162R

Map Reference:
D-Stage: 26-2
Quad: 86SW



Property and
Natural Resources



Tims Ford Reservoir

May 29, 2013



Tims Ford Reservoir Land Management and Disposition Plan Error – XTMFR-57-1PT

Reservoir Land Planning Errors

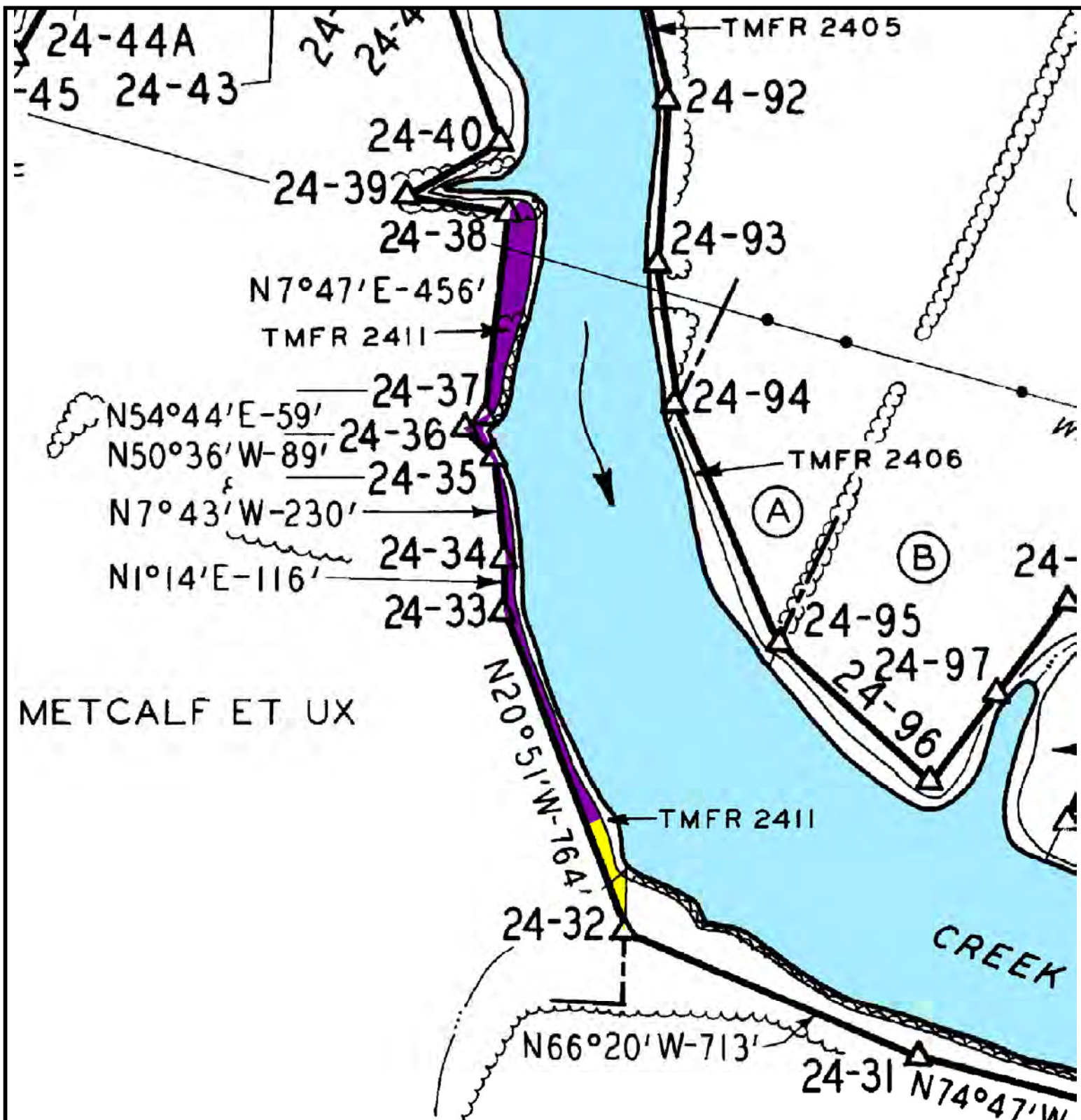
After approval of a reservoir land management plan by the Tennessee Valley Authority (TVA), all future uses of TVA-managed lands on that reservoir must then be consistent with the allocations within that RLMP. The land management zone allocations for certain portions of TVA-managed lands fronting privately-developed subdivisions have the potential to conflict with previous permitting practices as described in the 2000 Tims Ford Reservoir Land Management and Disposition Plan (RLM&DP). The RLM&DP states that existing privately-developed subdivisions, which were historically allowed permits and licenses for private water use facilities, would be allowed to continue this practice in the future. In certain cases, the TVA-managed lands fronting a portion of these privately-developed subdivisions were designated as “Conservation Partnership.” The resolution of these potential conflicts has resulted in the reallocation of the TVA-managed land to “Shoreline Access” fronting the privately-developed subdivision in its entirety. This document addresses the reallocation of a portion of Tims Ford RLM&DP Tract No. XTMFR-57-1PT. Definitions of TVA’s land planning allocations are located on TVA’s Web site, <http://www.tva.com/environment/reports/nrp/index.htm>.


General Information about Tims Ford Reservoir

Tims Ford Reservoir is an impoundment of the Elk River formed by Tims Ford Dam, which is located at Elk River mile 133.3 in Franklin County, Tennessee. Tims Ford Reservoir is located in parts of Franklin and Moore counties. TVA and the Tennessee Elk River Development Agency originally acquired 21,863 acres of land for construction of the reservoir, which was completed in 1970. TVA and the State of Tennessee have retained 8,247 acres of land lying above the 895-foot mean sea level elevation. At full pool, the reservoir is 34 miles long with a surface area of 10,680 acres.

Tims Ford RLM&DP Tract No. XTMFR-57-1PT

XTMFR-57-1PT is located in Franklin County, Tennessee, along the right descending bank of Rock Creek mile 1.1. In the RLM&DP, XTMFR-57-1PT was designated as “Conservation Partnership.” However, a portion of XTMFR-57-1PT fronts Rock Creek West Subdivision, a privately-developed subdivision with previously permitted water use facilities. In order to resolve the potential conflict from the RLM&DP designation, XTMFR-57-1PT is modified to consist of XTMFR-57-1aPT and XTMFR-57-1PT (Figure 1). XTMFR-57-1aPT fronts Rock Creek West Subdivision and occupies approximately 133 feet of shoreline. XTMFR-57-1aPT is designated as “Shoreline Access” and requests for private water use facilities will be considered. XTMFR-57-1PT consists of the remainder of the original reservoir land tract and remains designated as “Conservation Partnership.”



 XTMFR-57-1PT - Area
To Remain Zone 8
(Approximately 1.0 acre)


 XTMFR-57-1aPT - Area To
Be Reallocated To Zone 7
(Approximately 0.2 acre)

Exhibit Map

Proposed Allocation Change

Franklin County, Tennessee

XTMFR-57-1PT

Rock Creek Mile 1.7R

Map Reference:
D-Stage: 24
Quad: 86SW



Property and
Natural Resources





Tims Ford Reservoir Land Management and Disposition Plan Map Error of Tract No. XTMFR–54aPT

Tims Ford Reservoir Land Planning Omission

As a joint effort between the Tennessee Valley Authority (TVA) and the State of Tennessee, the TVA Board of Directors approved the Tims Ford Reservoir Land Management and Disposition Plan (RLM&DP) on August 29, 2000. Since that time, TVA and the State of Tennessee have exchanged certain properties pursuant to the RLM&DP. TVA now has the custody and control of two parcels of land (Tract Nos. XTMFR–54aPT and XTMFR–88bPT) that were not depicted on the RLM&DP maps. This document addresses the allocation and correct mapping of Tract No. XTMFR–54aPT and is considered a supplement to the RLM&DP. Definitions of TVA's land planning allocations are located on TVA's Web site, <http://www.tva.com/environment/reports/nrp/index.htm>.

General Information about Tims Ford Reservoir

Tims Ford Reservoir is an impoundment of the Elk River formed by Tims Ford Dam, which is located at Elk River mile (ERM) 133.3 in Franklin County, Tennessee. Tims Ford Reservoir is located in parts of Franklin and Moore counties. TVA and the Tennessee Elk River Development Agency (TERDA) originally acquired 21,863 acres of land for construction of the reservoir, which was completed in 1970. TVA and the State of Tennessee have retained 8,247 acres of land lying above the 895-foot mean sea level elevation. At full pool, the reservoir is 34 miles long with a surface area of 10,680 acres.

Tims Ford RLM&DP Tract No. XTMFR–54aPT

XTMFR–54aPT (also known as TVA Acquisition Tract No. TMFR–3503 and shown in Figure 1) is located in Franklin County, Tennessee, along the left descending bank of ERM 159.8. A private water use facility fronts this parcel of land, and the current land cover is deciduous hardwoods and maintained lawns.

XTMFR–54aPT occupies approximately 570 feet of shoreline and fronts Waters Edge Subdivision, a privately-developed subdivision with previously permitted water use facilities. The RLM&DP states that existing privately-developed subdivisions, which were historically allowed permits and licenses for private water use facilities, would be allowed to continue this practice in the future. In addition, Tract No. XTMFR–54aPT fronts a parcel of land, Tract No. TMFR–2807, which TERDA sold subject to Chapter 336 of the Tennessee Public Acts of 1963. Upon the sale of these lands, TERDA granted “the right — to construct and maintain — solely at locations and in accordance with places approved in advanced and in writing by TERDA and TVA, piers, docks, ramps and similar recreational water-use facilities...” Tract No. XTMFR–54aPT is designated as “Shoreline Access” and requests for private water use facilities will be considered.

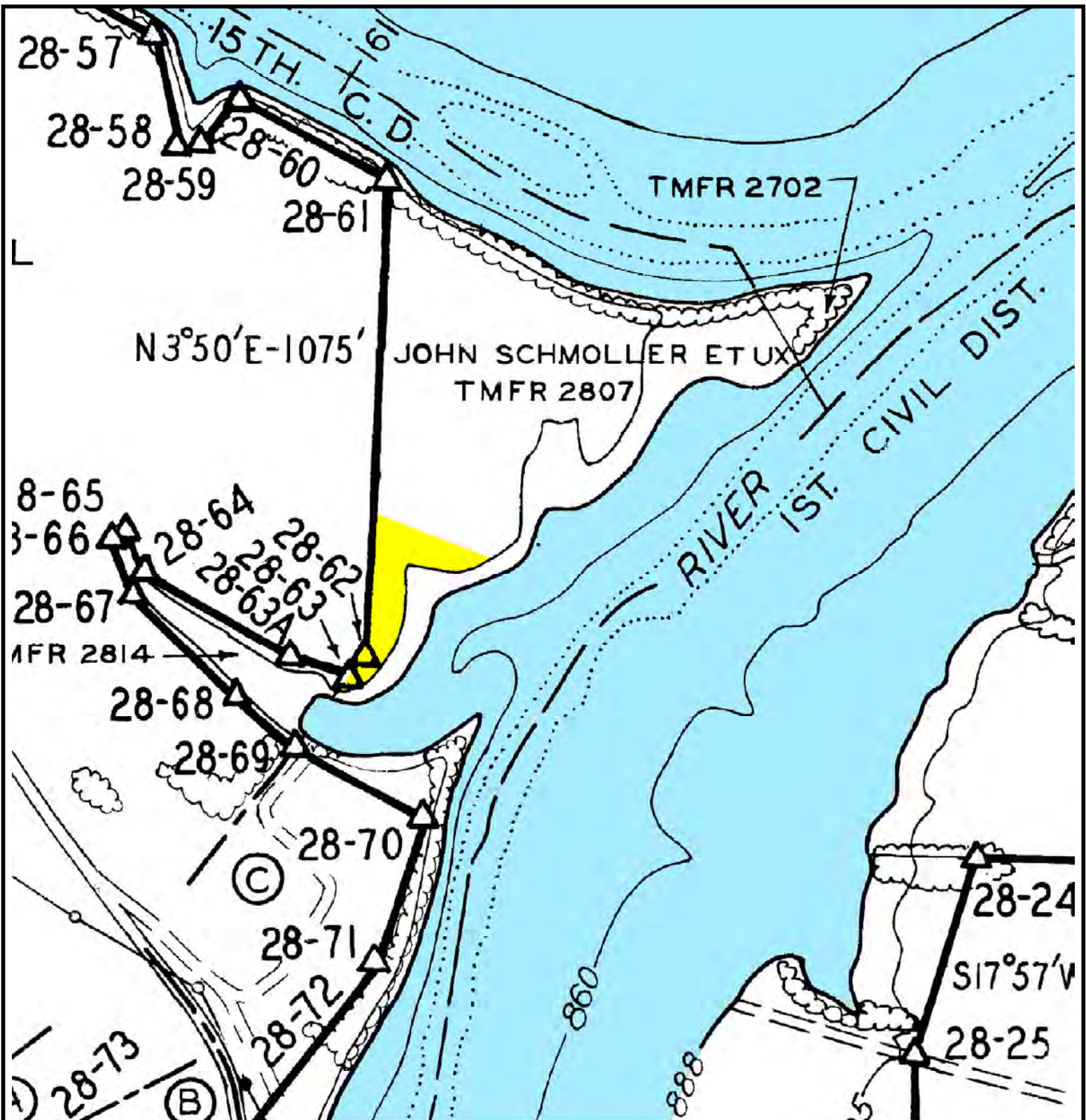



Exhibit Map
 Proposed Allocation Change
 Franklin County, Tennessee
 XTMFR-54aPT
 Elk River Mile 159.7R

Map Reference:
 D-Stage: 28
 Quad: 87NW

 XTMFR-54aPT - Area To
 Be Allocated To Zone 7
 (Approximately 0.8 acre)



Property and
 Natural Resources





Tims Ford Reservoir Land Management and Disposition Plan Error – XTMFR–50PT

Reservoir Land Planning Errors

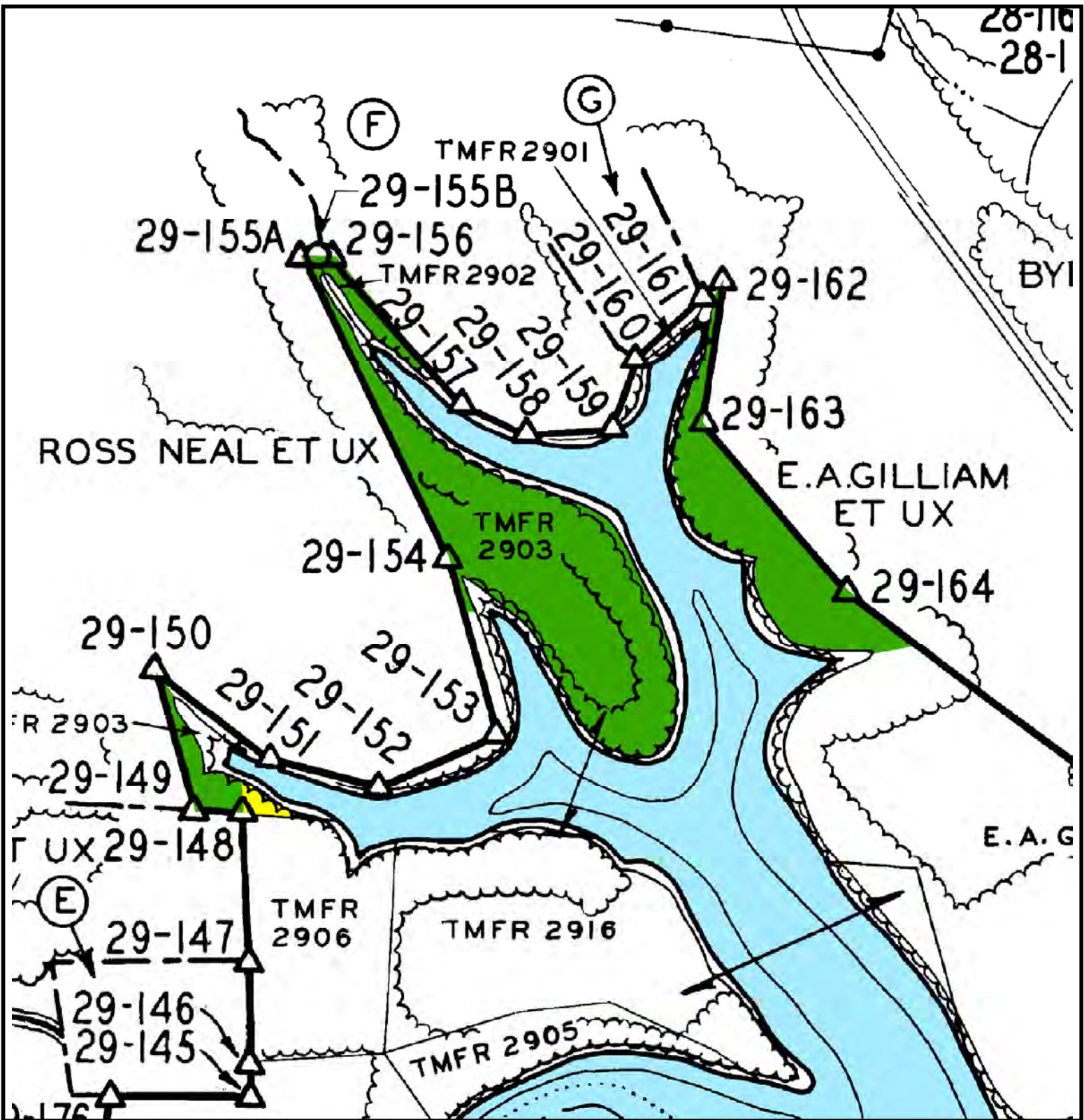
After approval of a reservoir land management plan by the Tennessee Valley Authority (TVA), all future uses of TVA-managed lands on that reservoir must then be consistent with the allocations within that RLMP. Recent research of deeds shows that on certain TVA reservoir land tracts and the current land management zone allocations conflict with egress and ingress rights of the adjacent property owners. To resolve the conflicts, the TVA-managed land has been reallocated to align with the egress and ingress rights of the adjacent property owners. This document addresses the reallocation of a portion of Tims Ford Reservoir Land Management and Disposition Plan (RLM&DP) Tract No. XTMFR–50PT. Definitions of TVA's land planning allocations are located on TVA's Web site, <http://www.tva.com/environment/reports/nrp/index.htm>.


General Information about Tims Ford Reservoir

Tims Ford Reservoir is an impoundment of the Elk River formed by Tims Ford Dam, which is located at Elk River mile (ERM) 133.3 in Franklin County, Tennessee. Tims Ford Reservoir is located in parts of Franklin and Moore counties. TVA and the Tennessee Elk River Development Agency (TERDA) originally acquired 21,863 acres of land for construction of the reservoir, which was completed in 1970. TVA and the State of Tennessee have retained 8,247 acres of land lying above the 895-foot mean sea level elevation. At full pool, the reservoir is 34 miles long with a surface area of 10,680 acres.

Tims Ford RLM&DP Tract No. XTMFR–50PT

XTMFR–50PT is located in Franklin County, Tennessee, along the right descending bank of ERM 155.5. In the RLM&DP, XTMFR–50PT was designated as “Natural Resource Conservation.” A portion of Tract No. XTMFR–50PT fronts two parcels of land, Elklure Cabin Sites Lots 3 and 4 or Tract Nos. XTMFR–9:3 and XTMFR–9:4, which TERDA sold subject to Chapter 336 of the Tennessee Public Acts of 1963. Upon the sale of these lands, TERDA granted “the right to construct, operate, and maintain — water-use facilities on and over any of the adjoining land lying between the lakeward boundary of (XTMFR–9:3 and XTMFR–9:4) and the adjacent waters of the lake.” In order to resolve the potential conflict from the RLM&DP designation, XTMFR–50PT is modified to consist of XTMFR–50aPT and XTMFR–50PT (Figure 1). XTMFR–50aPT fronts Lots 3 and 4 of Elklure Cabin Sites Subdivision and occupies approximately 240 feet of shoreline. XTMFR–50aPT is designated as “Shoreline Access” and requests for private water use facilities will be considered. XTMFR–50PT consists of the remainder of the original reservoir land tract and remains designated as “Natural Resource Conservation.”



 XTMFR-50PT - Area To Remain Zone 4 (Approximately 8.2 acres)


 XTMFR-50aPT - Area To Be Reallocated To Zone 7 (Approximately 0.1 acre)

Exhibit Map

Proposed Allocation Change

Franklin County, Tennessee

XTMFR-50PT

Elk River Mile 155.6R

Map Reference:
D-Stage: 29
Quad: 87NW



Property and
Natural Resources





Tims Ford Reservoir Land Management and Disposition Plan Error – XTMFR–28PT

Reservoir Land Planning Errors

After approval of a reservoir land management plan (RLMP) by the Tennessee Valley Authority (TVA), all future uses of TVA–managed lands on that reservoir must then be consistent with the allocations within that RLMP. The land management zone allocations for certain portions of TVA–managed lands fronting privately–developed subdivisions have the potential to conflict with previous permitting practices as described in the 2000 Tims Ford Reservoir Land Management and Disposition Plan (RLM&DP). The RLM&DP states that existing privately–developed subdivisions, which were historically allowed permits and licenses for private water use facilities, would be allowed to continue this practice in the future. In certain cases, the TVA–managed lands fronting a portion of these privately–developed subdivisions were designated as “Natural Resource Conservation.” The resolution of these potential conflicts has resulted in the reallocation of the TVA–managed land to “Shoreline Access” fronting the privately–developed subdivision in its entirety. This document addresses the reallocation of a portion of Tims Ford RLM&DP Tract No. XTMFR–28PT. Definitions of TVA’s land planning allocations are located on TVA’s Web site, <http://www.tva.com/environment/reports/nrp/index.htm>.

General Information about Tims Ford Reservoir

Tims Ford Reservoir is an impoundment of the Elk River formed by Tims Ford Dam, which is located at Elk River mile 133.3 in Franklin County, Tennessee. Tims Ford Reservoir is located in parts of Franklin and Moore counties. TVA and the Tennessee Elk River Development Agency originally acquired 21,863 acres of land for construction of the reservoir, which was completed in 1970. TVA and the State of Tennessee have retained 8,247 acres of land lying above the 895–foot mean sea level elevation. At full pool, the reservoir is 34 miles long with a surface area of 10,680 acres.

Tims Ford RLM&DP Tract No. XTMFR–28PT

XTMFR–28PT is located in Franklin County, Tennessee, along the left descending bank of Hurricane Creek mile 3.9. In the RLM&DP, XTMFR–28PT was designated as “Natural Resource Conservation.” However, a portion of XTMFR–28PT fronts Lakehaven Subdivision, a privately–developed subdivision with previously permitted water use facilities. In order to resolve the potential conflict from the RLM&DP designation, XTMFR–28PT is modified to consist of XTMFR–28aPT and XTMFR–28PT (Figure 1). XTMFR–28aPT fronts Lakehaven Subdivision and occupies approximately 490 feet of shoreline. XTMFR–28aPT is designated as “Shoreline Access” and requests for private water use facilities will be considered. XTMFR–28PT consists of the remainder of the original reservoir land tract and remains designated as “Natural Resource Conservation.”

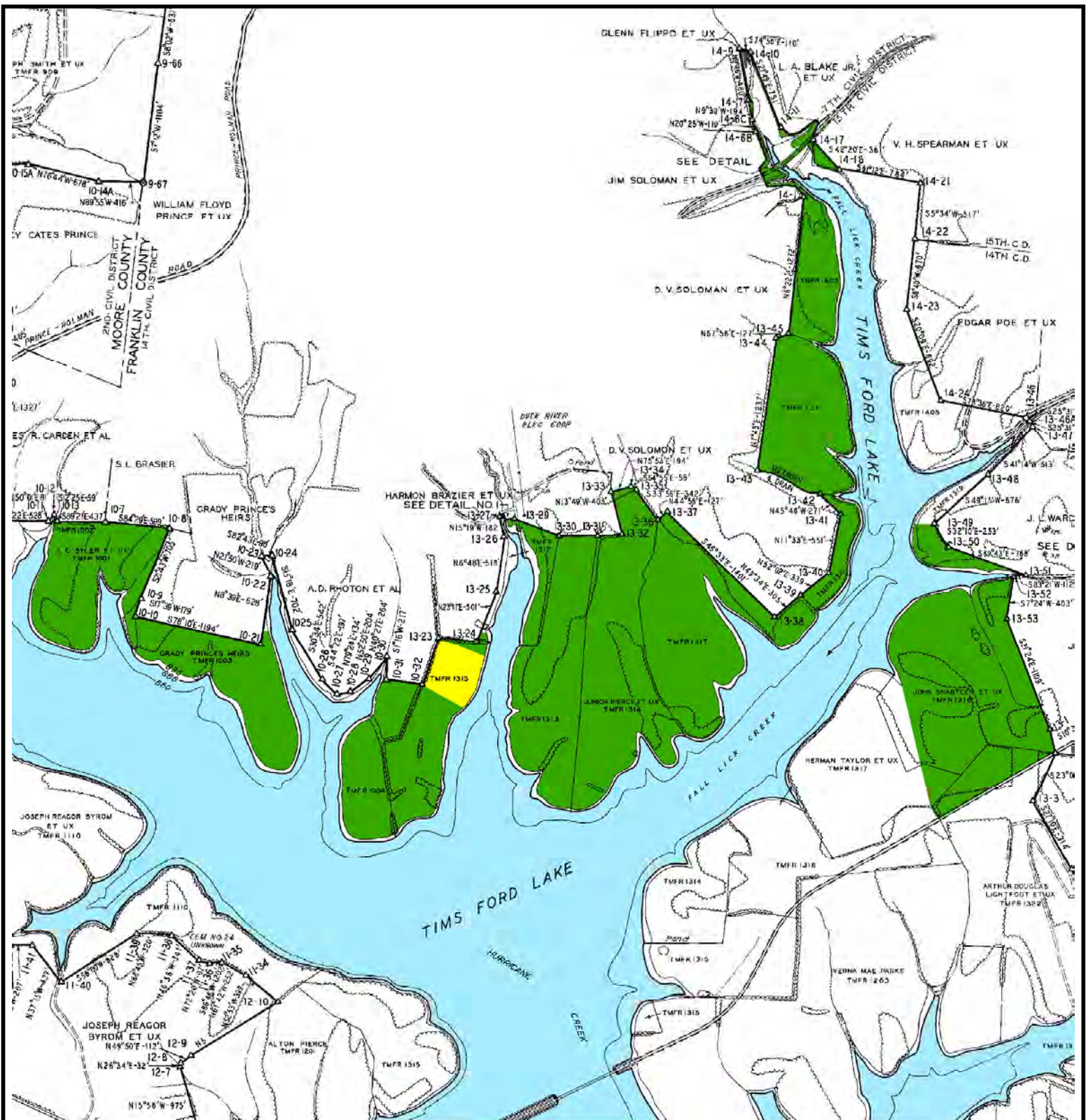


Exhibit Map

Proposed Allocation Change

Franklin County, Tennessee

XTMFR-28PT

Hurricane Creek Mile 3.5L

XTMFR-28PT - Area To Remain Zone 4 (Approximately 269.6 acres)

XTMFR-28aPT - Area To Be Reallocated To Zone 7 (Approximately 5.3 acres)

Map Reference:
D-Stage: 13
Quad: 79SE



Property and
Natural Resources





Tims Ford Reservoir Land Management and Disposition Plan Error – XTMFR-8PT

Reservoir Land Planning Errors

After approval of a reservoir land management plan (RLMP) by the Tennessee Valley Authority (TVA), all future uses of TVA-managed lands on that reservoir must then be consistent with the allocations within that RLMP. The land management zone allocations for certain portions of TVA-managed lands fronting privately-developed subdivisions have the potential to conflict with previous permitting practices as described in the 2000 Tims Ford Reservoir Land Management and Disposition Plan (RLM&DP). The RLM&DP states that existing privately-developed subdivisions, which were historically allowed permits and licenses for private water use facilities, would be allowed to continue this practice in the future. In certain cases, the TVA-managed lands fronting a portion of these privately-developed subdivisions were designated as “Natural Resource Conservation.” The resolution of these potential conflicts has resulted in the reallocation of the TVA-managed land to “Shoreline Access” fronting the privately-developed subdivision in its entirety. This document addresses the reallocation of a portion of Tims Ford RLM&DP Tract No. XTMFR-8PT. Definitions of TVA’s land planning allocations are located on TVA’s Web site, <http://www.tva.com/environment/reports/nrp/index.htm>.

General Information about Tims Ford Reservoir

Tims Ford Reservoir is an impoundment of the Elk River formed by Tims Ford Dam, which is located at Elk River mile 133.3 in Franklin County, Tennessee. Tims Ford Reservoir is located in parts of Franklin and Moore counties. TVA and the Tennessee Elk River Development Agency originally acquired 21,863 acres of land for construction of the reservoir, which was completed in 1970. TVA and the State of Tennessee have retained 8,247 acres of land lying above the 895-foot mean sea level elevation. At full pool, the reservoir is 34 miles long with a surface area of 10,680 acres.

Tims Ford RLM&DP Tract No. XTMFR-8PT

XTMFR-8PT is located in Moore County, Tennessee, along the right descending bank of Lost Creek mile 4.1. In the RLM&DP, XTMFR-8PT was designated as “Natural Resource Conservation.” However, a portion of XTMFR-8PT fronts Burkhalter Subdivision, a privately-developed subdivision with previously permitted water use facilities. In order to resolve the potential conflict from the RLM&DP designation, XTMFR-8PT is modified to consist of XTMFR-8aPT and XTMFR-8PT (Figure 1). XTMFR-8aPT fronts Burkhalter Subdivision and occupies approximately 715 feet of shoreline. XTMFR-8aPT is designated as “Shoreline Access” and requests for private water use facilities will be considered. XTMFR-8PT consists of the remainder of the original reservoir land tract and remains designated as “Natural Resource Conservation.”



Tims Ford Reservoir Land Management and Disposition Plan Map Error of Tract No. XTMFR-8PT

Tims Ford Reservoir Land Planning Omission

As a joint effort between the Tennessee Valley Authority (TVA) and the State of Tennessee, the TVA Board of Directors approved the Tims Ford Reservoir Land Management and Disposition Plan (RLM&DP) on August 29, 2000. Since that time, TVA has determined that a small portion of RLM&DP Tract No. XTMFR-8PT was incorrectly mapped. This document addresses the correct size and location of this parcel of land and is considered a supplement to the RLM&DP. Definitions of TVA's land planning allocations are located on TVA's Web site, <http://www.tva.com/environment/reports/nrp/index.htm>.

General Information about Tims Ford Reservoir

Tims Ford Reservoir is an impoundment of the Elk River formed by Tims Ford Dam, which is located at Elk River mile 133.3 in Franklin County, Tennessee. Tims Ford Reservoir is located in parts of Franklin and Moore counties. TVA and the Tennessee Elk River Development Agency originally acquired 21,863 acres of land for construction of the reservoir, which was completed in 1970. TVA and the State of Tennessee have retained 8,247 acres of land lying above the 895-foot mean sea level (msl) elevation. At full pool, the reservoir is 34 miles long with a surface area of 10,680 acres.

Tims Ford RLM&DP Tract No. XTMFR-8PT

The incorrectly mapped portion of XTMFR-8PT (Figure 1) is located in Moore County, Tennessee, along the right descending bank of Lost Creek mile 3.4. The RLM&DP incorrectly depicts XTMFR-8PT as 201.8 acres with 186.5 acres located above the 895-foot msl. The correct size of XTMFR-8PT is 197.6 acres with 182.2 acres located above the 895-foot msl. The mapping error or the correction thereof does not impact the allocation of XTMFR-8PT or the associated parcel description located in Volume II of the RLM&DP.

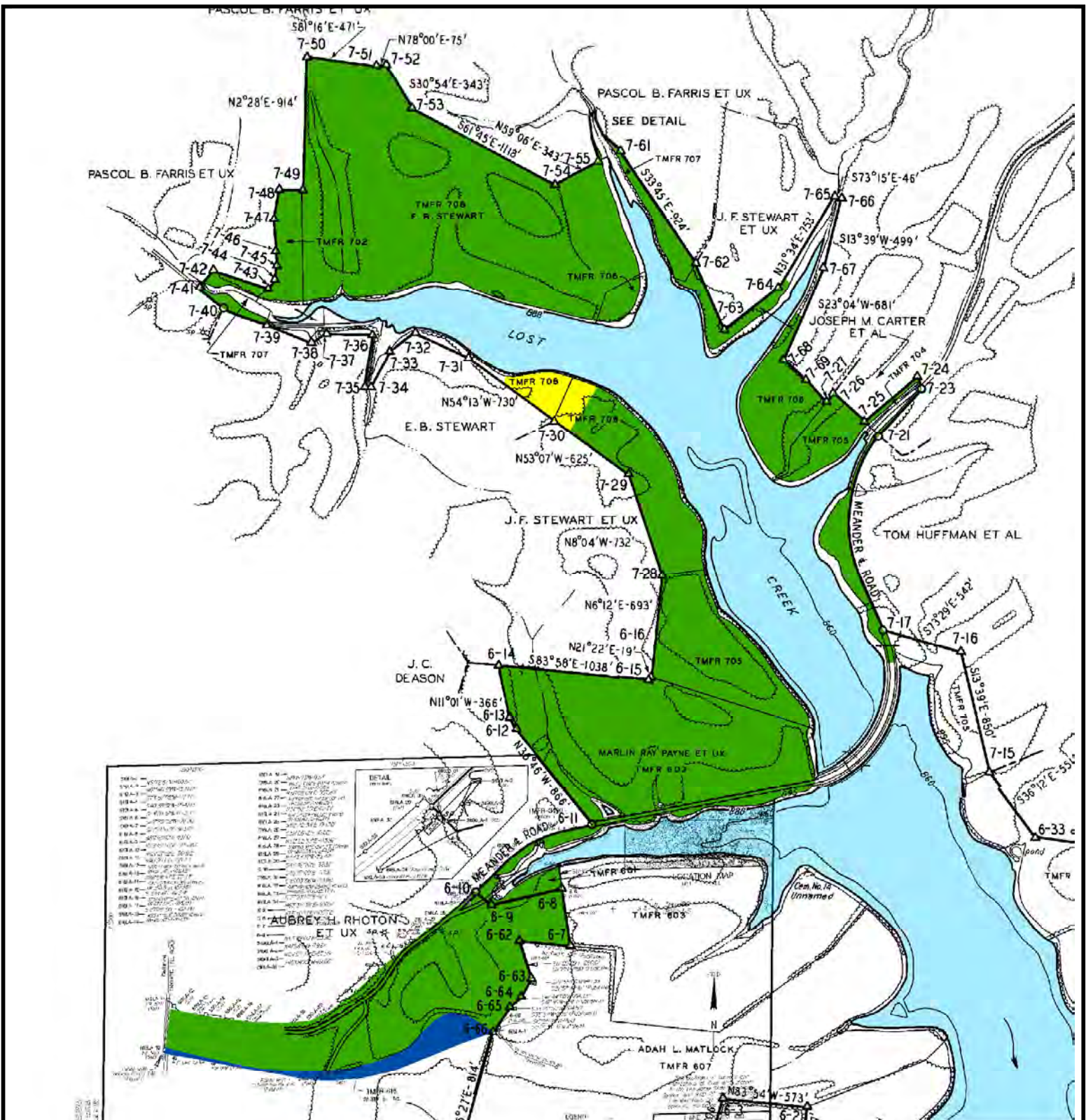


Exhibit Map Proposed Allocation Change Moore County, Tennessee XTMFR-8PT Lost Creek Mile 3.7-4.5R

Map Reference:
D-Stage: 7
Quad: 79SE

- XTMFR-8PT - Area To Remain Zone 4 (Approximately 178.8 acres)
- XTMFR-8aPT - Area To Be Reallocated To Zone 7 (Approximately 3.4 acres)
- Mapping Error To Be Removed From Land Plan (Approximately 4.3 acres)



Property and Natural Resources





Tims Ford Reservoir Land Management and Disposition Plan Error – XTMFR-6PT

Reservoir Land Planning Errors

After approval of a reservoir land management plan (RLMP) by the Tennessee Valley Authority (TVA), all future uses of TVA-managed lands on that reservoir must then be consistent with the allocations within that RLMP. The land management zone allocations for certain portions of TVA-managed lands fronting privately-developed subdivisions have the potential to conflict with previous permitting practices as described in the 2000 Tims Ford Reservoir Land Management and Disposition Plan (RLM&DP). The RLM&DP states that existing privately-developed subdivisions, which were historically allowed permits and licenses for private water use facilities, would be allowed to continue this practice in the future. In certain cases, the TVA-managed lands fronting a portion of these privately-developed subdivisions were designated as “Natural Resource Conservation.” The resolution of these potential conflicts has resulted in the reallocation of the TVA-managed land to “Shoreline Access” fronting the privately-developed subdivision in its entirety. This document addresses the reallocation of a portion of Tims Ford RLM&DP Tract No. XTMFR-6PT. Definitions of TVA’s land planning allocations are located on TVA’s Web site, <http://www.tva.com/environment/reports/nrp/index.htm>.

General Information about Tims Ford Reservoir

Tims Ford Reservoir is an impoundment of the Elk River formed by Tims Ford Dam, which is located at Elk River mile 133.3 in Franklin County, Tennessee. Tims Ford Reservoir is located in parts of Franklin and Moore counties. TVA and the Tennessee Elk River Development Agency originally acquired 21,863 acres of land for construction of the reservoir, which was completed in 1970. TVA and the State of Tennessee have retained 8,247 acres of land lying above the 895-foot mean sea level elevation. At full pool, the reservoir is 34 miles long with a surface area of 10,680 acres.

Tims Ford RLM&DP Tract No. XTMFR-6PT

XTMFR-6PT is located in Moore County, Tennessee, along the right descending bank of Lost Creek mile 2.5. In the RLM&DP, XTMFR-6PT was designated as “Natural Resource Conservation.” However, a portion of XTMFR-6PT fronts Lost Creek Subdivision, a privately-developed subdivision with previously permitted water use facilities. In order to resolve the potential conflict from the RLM&DP designation, XTMFR-6PT is modified to consist of XTMFR-6aPT and XTMFR-6PT (Figure 1). XTMFR-6aPT fronts Lost Creek Subdivision and occupies approximately 232 feet of shoreline. XTMFR-6aPT is designated as “Shoreline Access” and requests for private water use facilities will be considered. XTMFR-6PT consists of the remainder of the original reservoir land tract and remains designated as “Natural Resource Conservation.”

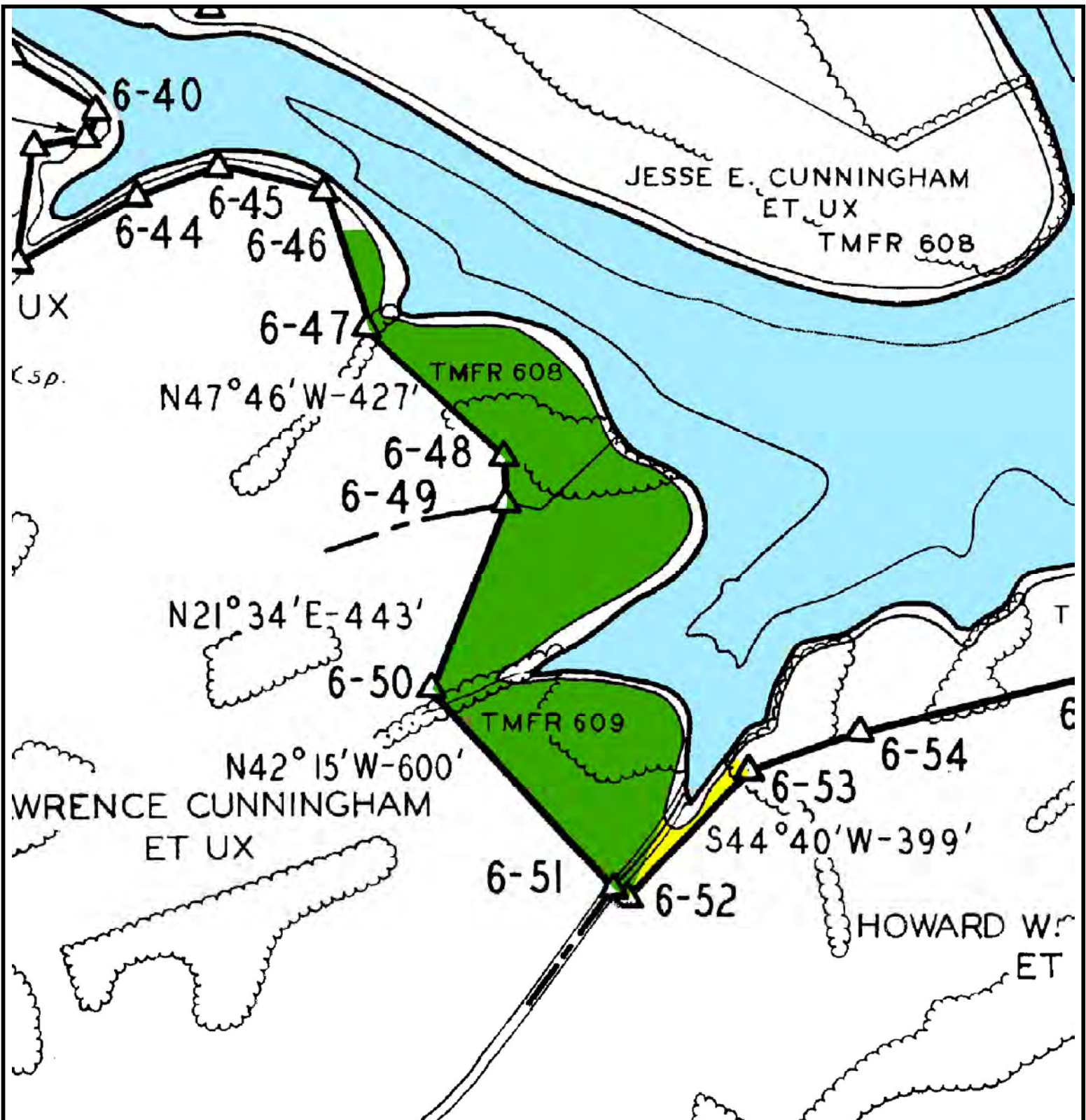


Exhibit Map Proposed Allocation Change Moore County, Tennessee XTMFR-6PT Lost Creek Mile 2.8R

Map Reference:
 D-Stage: 6
 Quad: 80NE



Property and
 Natural Resources





Tims Ford Reservoir Land Management and Disposition Plan Error – XTMFR-16PT

Reservoir Land Planning Errors

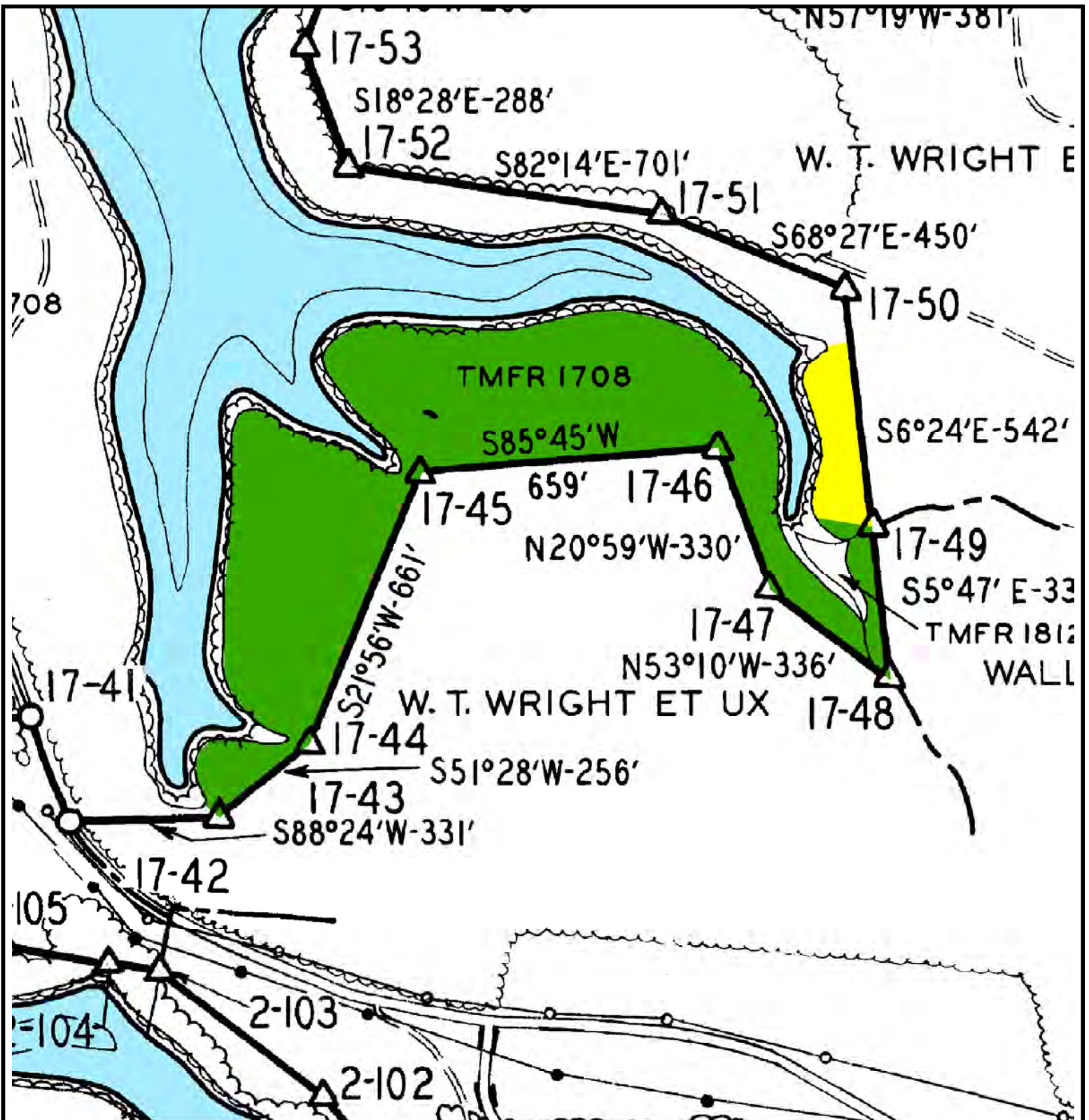
After approval of a reservoir land management plan by the Tennessee Valley Authority (TVA), all future uses of TVA-managed lands on that reservoir must then be consistent with the allocations within that RLMP. The land management zone allocations for certain portions of TVA-managed lands fronting privately-developed subdivisions have the potential to conflict with previous permitting practices as described in the 2000 Tims Ford Reservoir Land Management and Disposition Plan (RLM&DP). The RLM&DP states that existing privately-developed subdivisions, which were historically allowed permits and licenses for private water use facilities, would be allowed to continue this practice in the future. In certain cases, the TVA-managed lands fronting a portion of these privately-developed subdivisions were designated as “Natural Resource Conservation.” The resolution of these potential conflicts has resulted in the reallocation of the TVA-managed land to “Shoreline Access” fronting the privately-developed subdivision in its entirety. This document addresses the reallocation of a portion of Tims Ford RLM&DP Tract No. XTMFR-16PT. Definitions of TVA’s land planning allocations are located on TVA’s Web site, <http://www.tva.com/environment/reports/nrp/index.htm>.

General Information about Tims Ford Reservoir

Tims Ford Reservoir is an impoundment of the Elk River formed by Tims Ford Dam, which is located at Elk River mile (ERM) 133.3 in Franklin County, Tennessee. Tims Ford Reservoir is located in parts of Franklin and Moore counties. TVA and the Tennessee Elk River Development Agency originally acquired 21,863 acres of land for construction of the reservoir, which was completed in 1970. TVA and the State of Tennessee have retained 8,247 acres of land lying above the 895-foot mean sea level elevation. At full pool, the reservoir is 34 miles long with a surface area of 10,680 acres.

Tims Ford RLM&DP Tract No. XTMFR-16PT

XTMFR-16PT is located in Franklin County, Tennessee, along the left descending bank of ERM 141.1. In the RLM&DP, XTMFR-16PT was designated as “Natural Resource Conservation.” However, a portion of XTMFR-16PT fronts Heatherwood Subdivision, a privately-developed subdivision with previously permitted water use facilities. In order to resolve the potential conflict from the RLM&DP designation, XTMFR-16PT is modified to consist of XTMFR-16aPT and XTMFR-16PT (Figure 1). XTMFR-16aPT fronts Heatherwood Subdivision and occupies approximately 395 feet of shoreline. XTMFR-16aPT is designated as “Shoreline Access” and requests for private water use facilities will be considered. XTMFR-16PT consists of the remainder of the original reservoir land tract and remains designated as “Natural Resource Conservation.”



XTMFR-16PT - Area To Remain Zone 4
(Approximately 13.0 acres)

XTMFR-16aPT - Area To Be Reallocated To Zone 7
(Approximately 1.0 acre)

Exhibit Map

Proposed Allocation Change

Franklin County, Tennessee

XTMFR-16PT

Elk River Mile 141.2L

Map Reference:
D-Stage: 17
Quad: 87NW



Property and
Natural Resources

