

Parcel	Zone	Acres
1	2	386.4
2	4	134.5
3	6	110.4
4	4	26.8
5	7	12.7
6	4	9.9
6-1	8	0.4
7	7	156.5
7A	5	0.2
8	4	186.5
8-1	8	1.2
8-2	8	0.6
9	7	1.1
10	6	3.4
11	6	9.3
12	4	79.9
13	4	23.9
14	4	118.6
15	3	198.6

Parcel	Zone	Acres
16	4	14.0
17	7	15.4
18	4	17.2
18-1	8	0.4
18-2	8	0.4
19	6	45.8
20	4	497.3
20-1	8	0.1
20-2	8	0.3
20-3	8	0.3
21	7	3.8
22	4	44.3
22-1	8	0.3
22-2	8	0.4
22-3	8	0.8
22-4	8	0.3
22-5	8	0.6
23	6	23.6
24	4	66.9

Parcel	Zone	Acres
25	7	6.3
26	4	138.9
26-1	8	1.4
27	6	61.0
28	4	274.9
28-1	8	1.0
28-2	8	0.3
29	7	1.7
30	6	32.4
31	7	176.1
32	6	89.3
33	4	297.8
33-1	8	0.8
34	4	418.0
34-1	8	1.4
34-2	8	0.1
35	6	1.7
36	7	204.6

**Exhibit 1
Tims Ford Reservoir
Land Management and Disposition Plan
Panel 1**

Planned Land

- Zone 2 - Project Operations
- Zone 3 - Sensitive Resource Management
- Zone 4 - Natural Resource Conservation
- Zone 5 - Industrial/Commercial
- Zone 6 - Recreation
- Zone 6 - Proposed State Park Expansion
- Zone 7 - Residential Access
- Zone 7 - Residential Development*
- Zone 8 - Conservation Partnership

Committed Land

- TVA Land Below 895' Contour
- Parks (State and Local)
- Launching Ramps
- Private Subdivisions
- Deeded Access Subdivisions
- Parcel Delineations

2000 0 2000 4000 Feet

TVA

6/8/00

*Includes a 50' Buffer On Proposed Residential Parcels 7, 31, 36, 46, and 51.

Exhibit 1 Tims Ford Reservoir Land Management and Disposition Plan Panel 2

Planned Land

- Zone 2 - Project Operations
- Zone 3 - Sensitive Resource Management
- Zone 4 - Natural Resource Conservation
- Zone 5 - Industrial/Commercial
- Zone 6 - Recreation
- Zone 6 - Proposed State Park Expansion
- Zone 7 - Residential Access
- Zone 7 - Residential Development*
- Zone 8 - Conservation Partnership

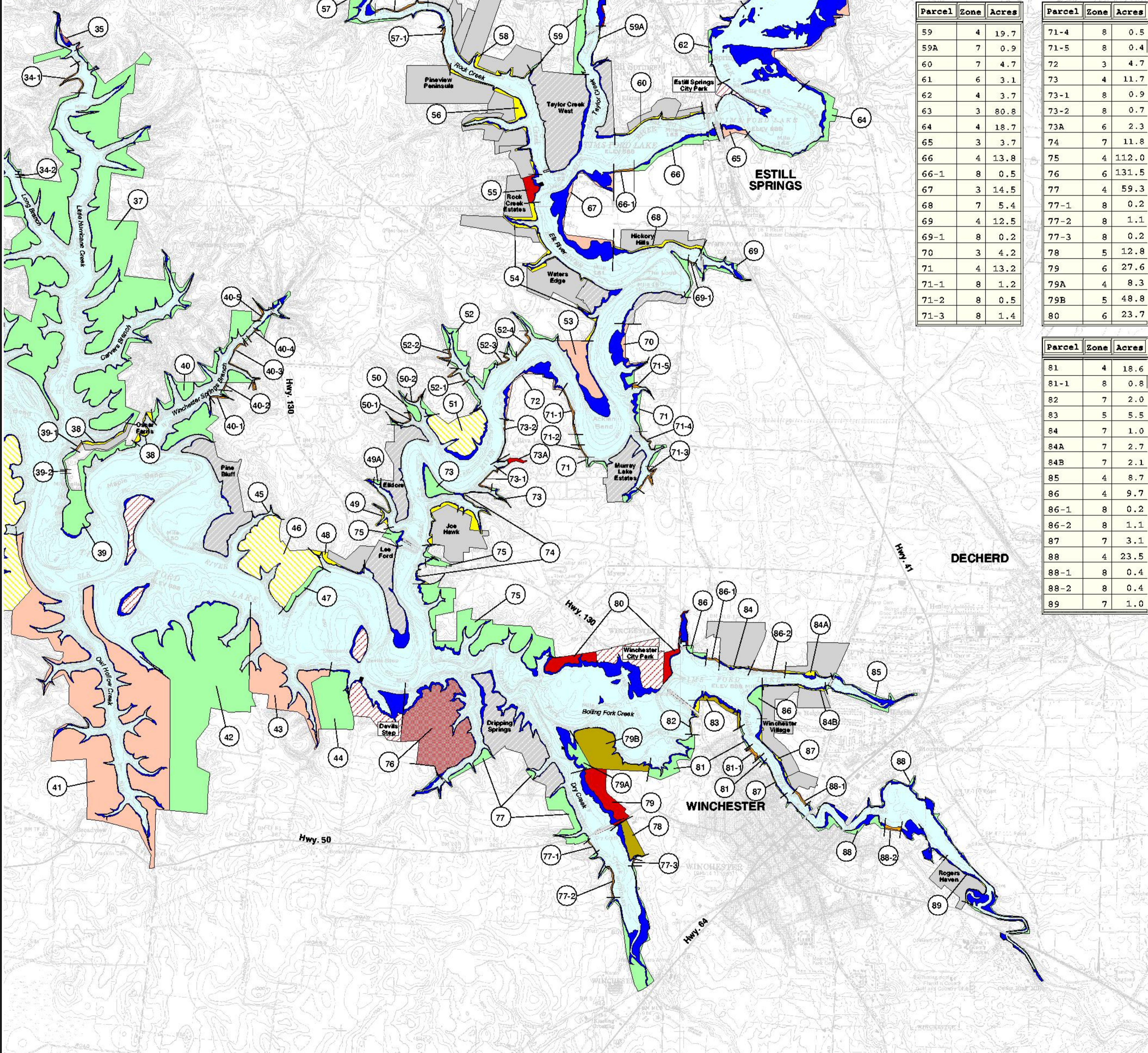
Committed Land

- TVA Land Below 895' Contour
- Parks (State and Local)
- Launching Ramps
- Private Subdivisions
- Deeded Access Subdivisions
- Parcel Delineations



2000 0 2000 4000 Feet

*Includes a 50' Buffer On Proposed Residential Parcels 7, 31, 36, 46, and 51.



Parcel	Zone	Acres
37	4	376.6
38	7	5.7
39	4	45.8
39-1	8	0.4
39-2	8	0.2
40	4	82.0
40-1	8	0.6
40-2	8	0.3
40-3	8	1.9
40-4	8	0.2
40-5	8	0.5
41	3	461.7
42	4	366.3
43	3	83.3
44	4	57.7
45	4	0.3
46	7	111.2
47	4	8.3
48	7	4.2

Parcel	Zone	Acres
49	7	3.1
49A	4	0.7
50	4	8.3
50-1	8	0.7
50-2	8	0.4
51	7	48.9
52	4	24.6
52-1	8	0.6
52-2	8	0.8
52-3	8	0.5
52-4	8	0.9
53	3	29.5
54	7	14.0
55	6	7.7
56	7	14.5
57	4	38.7
57-1	8	1.2
57-2	8	1.5
58	7	6.0

Parcel	Zone	Acres
59	4	19.7
59A	7	0.9
60	7	4.7
61	6	3.1
62	4	3.7
63	3	80.8
64	4	18.7
65	3	3.7
66	4	13.8
66-1	8	0.5
67	3	14.5
68	7	5.4
69	4	12.5
69-1	8	0.2
70	3	4.2
71	4	13.2
71-1	8	1.2
71-2	8	0.5
71-3	8	1.4

Parcel	Zone	Acres
71-4	8	0.5
71-5	8	0.4
72	3	4.7
73	4	11.7
73-1	8	0.9
73-2	8	0.7
73A	6	2.3
74	7	11.8
75	4	112.0
76	6	131.5
77	4	59.3
77-1	8	0.2
77-2	8	1.1
77-3	8	0.2
78	5	12.8
79	6	27.6
79A	4	8.3
79B	5	48.8
80	6	23.7

Parcel	Zone	Acres
81	4	18.6
81-1	8	0.8
82	7	2.0
83	5	5.5
84	7	1.0
84A	7	2.7
84B	7	2.1
85	4	8.7
86	4	9.7
86-1	8	0.2
86-2	8	1.1
87	7	3.1
88	4	23.5
88-1	8	0.4
88-2	8	0.4
89	7	1.0