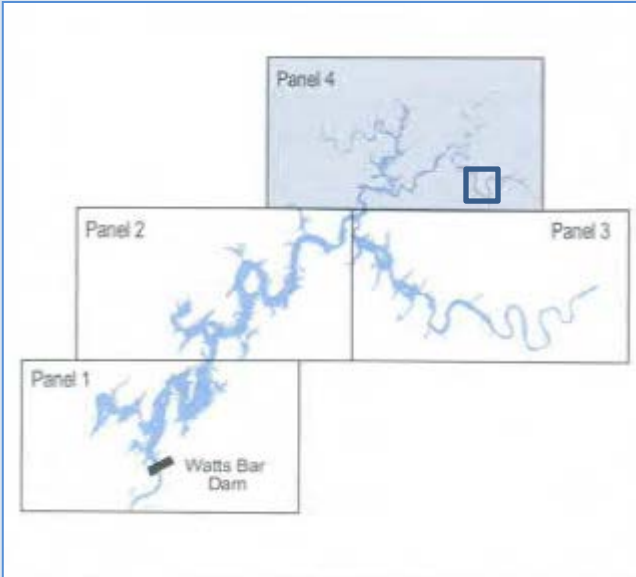
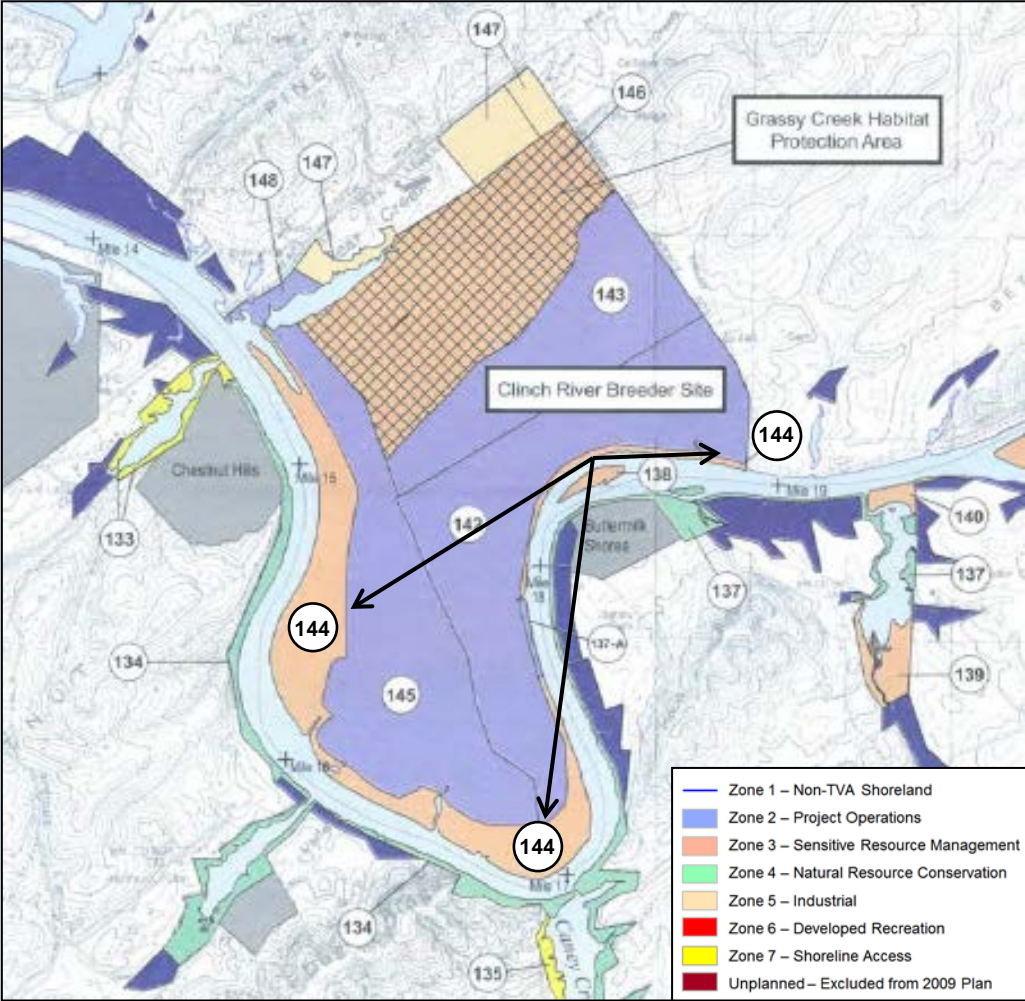


Watts Bar Reservoir Proposed Allocation Change

PARCEL 144 (172.3 acres)



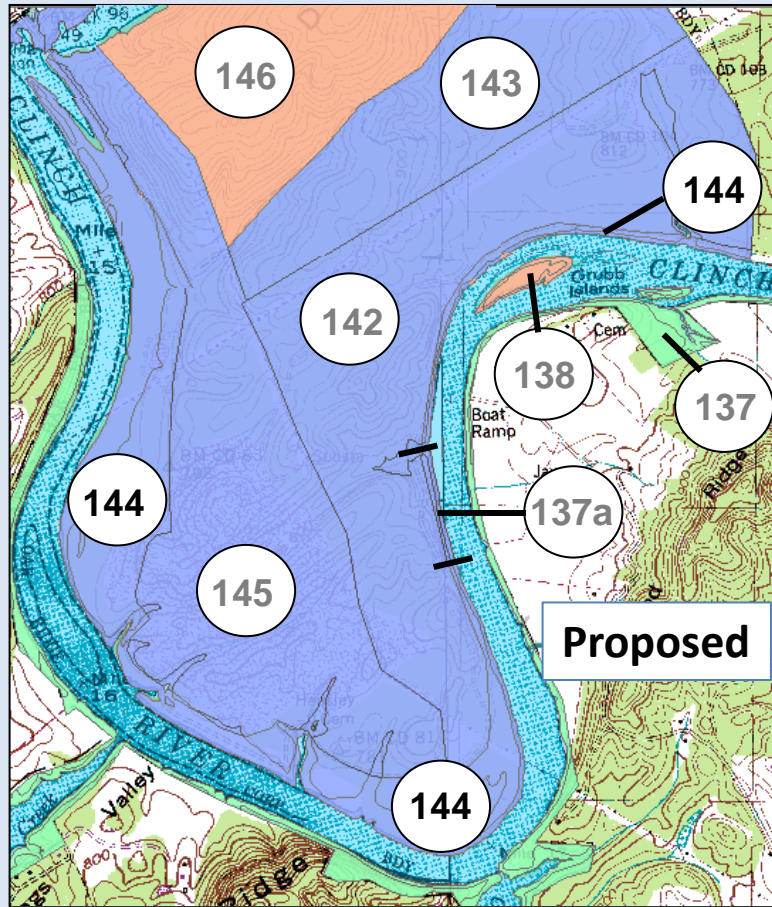
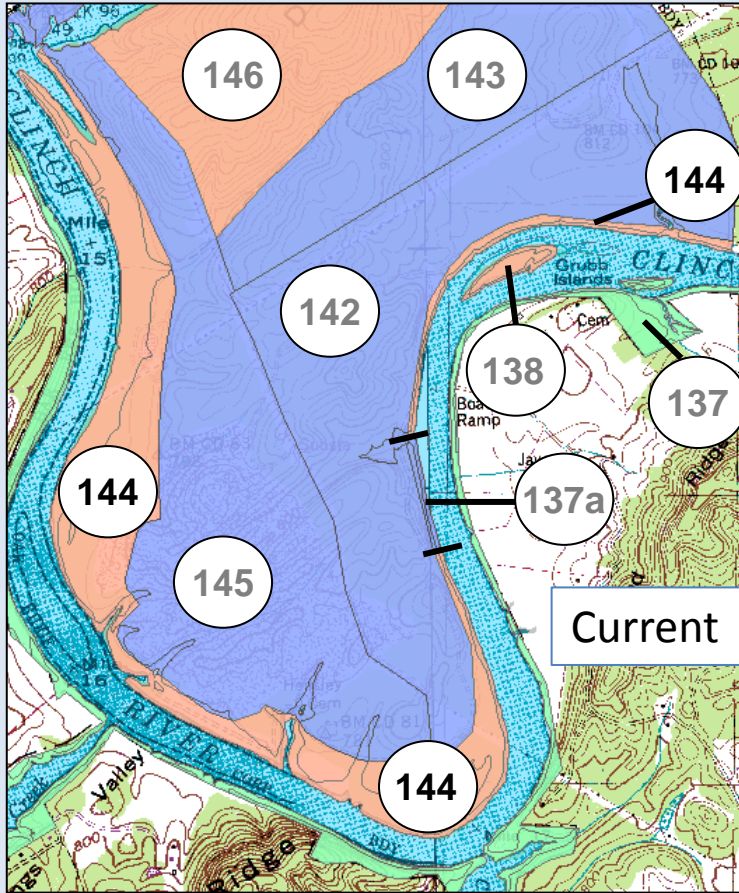
Location: Panel 4; Roane Co.;
Clinch River Miles
14.6 to 17.5R



TVA Proposed Action:
TVA proposes to change the land use allocation of Parcel 144 from its current allocation of Zone 3 (Sensitive Resource Management) to Zone 2 (Project Operations).

Parcel 144 - Proposed Allocation Change

- Allocation change is proposed to support TVA's planned use on adjacent Parcels 137a, 142, 143, 145, and 148 for a proposed TVA power generation project.



Parcel 144 - Proposed Allocation Change

- **Additional information:**

- Potential construction of a new TVA power generation project on backlying TVA property (Parcels 137a, 142, 143, 145, and 148 - allocated as Zone 2) would necessitate crossing portions of Parcel 144 for construction and operation. The change to Zone 2 is needed to support the proposed project and to be consistent with TVA's Land Zone Definitions (Zones 2 and 3 are described in pages 4-6).
- Parcel 144 was allocated as Zone 3 in the 2009 Watts Bar Land Plan to protect known and potential sensitive resources such as wetlands and cultural resources. A site survey was completed in 2015 that identified the known sensitive resource areas.
- Potential impacts to sensitive resources from the proposed power generation facility will be assessed during a separate site-specific environmental review to evaluate the potential environmental effects of the proposal. TVA would impose avoidance and mitigative measures to minimize adverse environmental effects.

Land Planning Zone Definitions

Zone 2: Project Operations

- This category includes all TVA reservoir land currently used for TVA operations and public works projects. It includes:
- Land adjacent to established navigation operations: locks, lock operations and maintenance facilities and the navigation work boat dock and bases
- Land used for TVA power projects operations: generation facilities, switchyards and transmission facilities and rights-of-way
- Dam reservation land: areas used for developed and dispersed recreation, maintenance facilities, watershed team offices, research areas and visitor centers
- Navigation safety harbors/landings: areas used for tying off commercial barge tows and recreational boats during adverse weather conditions or equipment malfunctions
- Navigation dayboards and beacons: areas with structures placed on the shoreline to facilitate navigation
- Public works projects: includes fire halls, public water intakes, public treatment plants, etc.
- Land planned for any of the above uses in the future

Zone 3: Sensitive Resource Management

This land is managed for protection and enhancement of sensitive resources. Sensitive resources, as defined by TVA, include resources protected by state or federal law or executive order and other land features/natural resources TVA considers important to the area viewscape or natural environment. Recreational natural resource activities, such as hunting, wildlife observation and camping on undeveloped sites may occur in this zone, but the overriding focus is protecting and enhancing the sensitive resource the site supports. Areas included are:

- TVA-designated sites with potentially significant archaeological resources
- TVA public land with sites/structures listed on or eligible for listing on the National Register of Historic Places
- Wetlands: aquatic bed, emergent, forested and scrub-shrub wetlands as defined by TVA.
- TVA public land under easement, lease or license to other agencies/individuals for resource protection purposes
- TVA public land fronting land owned by other agencies/individuals for resource protection purposes
- Ecological Study Areas: these TVA Natural Areas are designated as suitable for ecological research and environmental education by a recognized authority or agency

Zone 3 Definition - Continued

- **Habitat Protection Areas:** these TVA Natural Areas are managed to protect populations of species identified as threatened or endangered by the USFWS, state-listed species and any unusual or exemplary biological communities/geological features
- **Small Wild Areas:** these TVA Natural Areas are managed by TVA alone or in cooperation with other public agencies or private conservation organizations to protect exceptional natural, scenic or aesthetic qualities that can also support dispersed, low-impact types of outdoor recreation
- **River corridor with sensitive resources:** a river corridor is a linear green space along both stream banks of selected tributaries entering a reservoir managed for light boat access at specific sites, riverside trails, and interpretive activities
- **Significant scenic areas:** these are areas designated for visual protection because of their unique vistas or particularly scenic qualities
- **Champion tree site:** areas designated by TVA as sites that contain the largest known individual tree of its species in that state; the state forestry agency Champion Tree Program designates the tree, while TVA designates the area of the sites for those located on TVA public land
- **Other sensitive ecological areas:** examples of these areas include heron rookeries, uncommon plant and animal communities and unique cave or karst formations