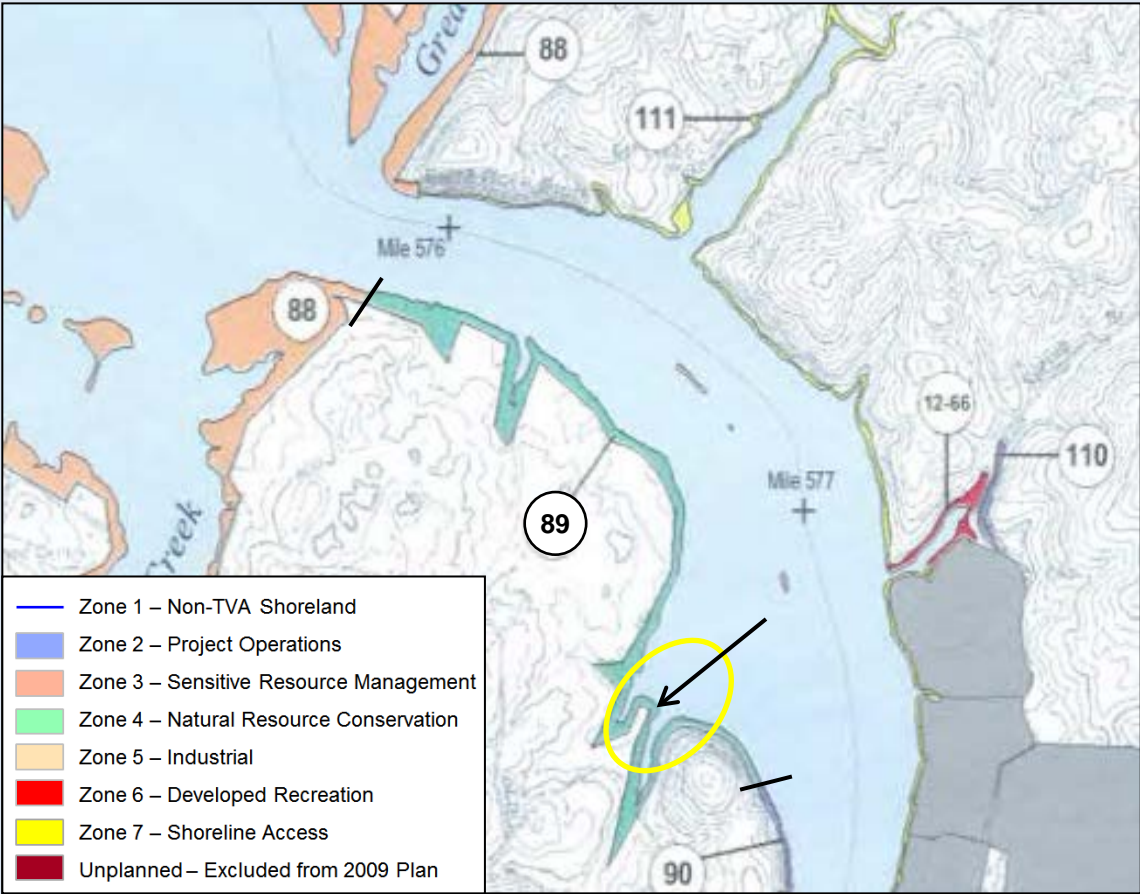
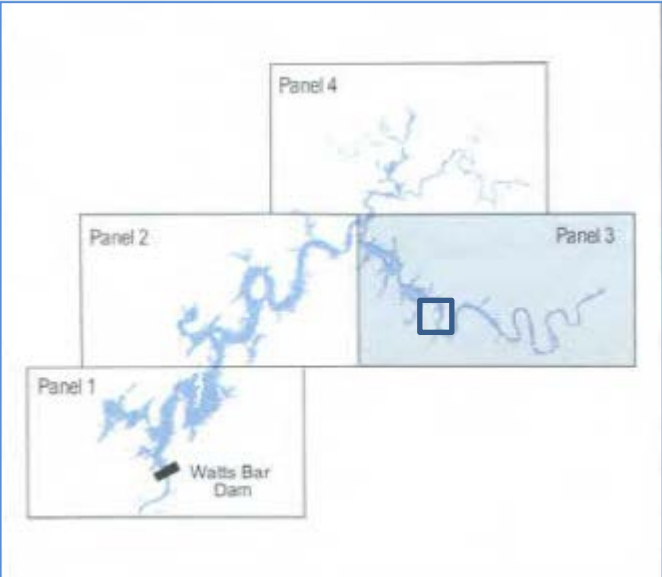


Watts Bar Reservoir Proposed Allocation Change

PARCEL 89

(35.0 acres)



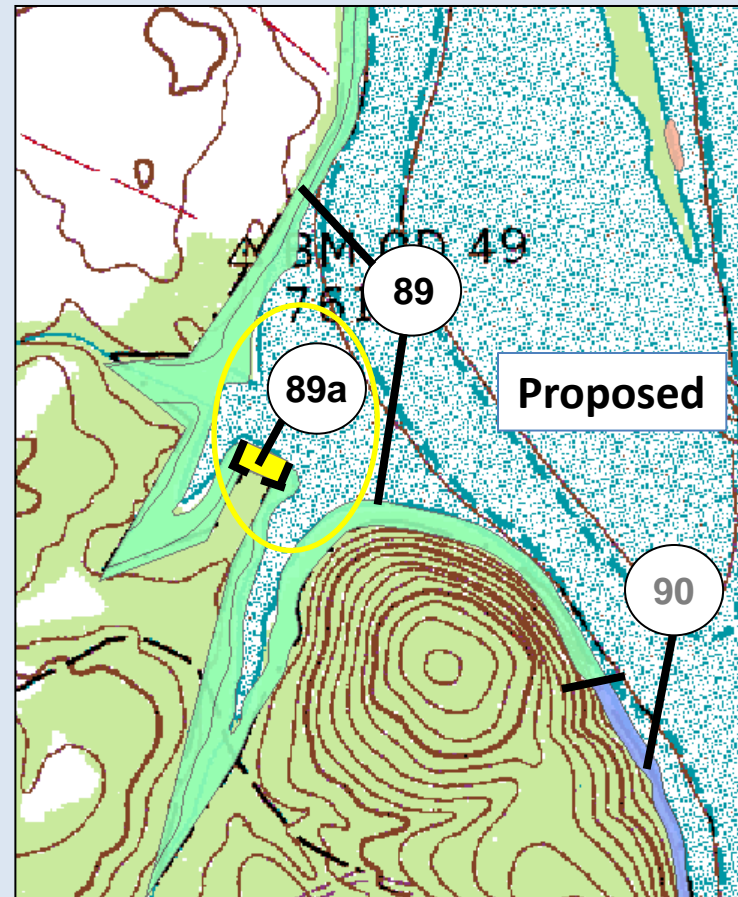
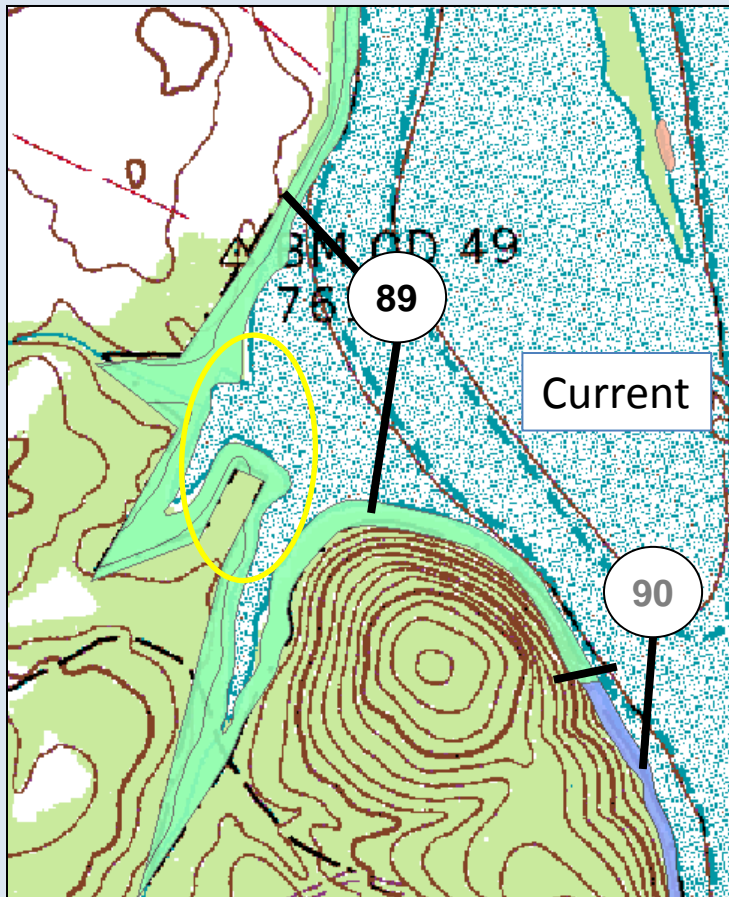
Location: Panel 3; Roane Co.;
Tennessee River Mile (TRM) 577.3L

TVA Proposed Action:

TVA proposes to change the land use allocation of a 0.4-acre portion of Parcel 89 from its current allocation of Zone 4 (Natural Resource Conservation) to Zone 7 (Shoreline Access).

Parcel 89 - Proposed Allocation Change

- Change 0.4-acre portion of Parcel 89 to Zone 7 (Shoreline Access)
 - Revise Parcel 89 acreage from 35.0 acres to 34.6 acres



Parcel 89 - Proposed Allocation Change

- **Additional information:**

- Parcel 89 extends from the left bank of TRM 576.9 to 577.5. The upstream portion is relatively flat to gently sloping and it fronts former TVA property (Tract No. XWBR 328) that has gained shoreline access rights that were extinguished at TRM 536.0R (Parcel 256) under TVA's former Maintain and Gain policy that the TVA Board has since retracted.
- The land cover is a predominantly bottomland hardwood forest cover type along the shoreline with areas behind the shoreline that have reverted to early successional habitat due to pine bark beetle damage. The area provides habitat for common wildlife species and the dead pine snags provide nesting habitat for osprey and woodpeckers as well as other cavity nesting species. The downstream area is utilized by species such as osprey, resident Canada geese and belted kingfisher.
- The remaining 34.6 acres of Parcel 89 would remain allocated as Zone 4 (Natural Resource Conservation) and requests for private water-use facilities would not be considered on Parcel 89, and would be considered in the 0.4-acre area proposed for reallocation to Zone 7 (Shoreline Access).

Land Planning Zone Definitions

Zone 4: Natural Resource Conservation

- This is land managed for the enhancement of natural resources for human use and appreciation. Management of resources is the primary focus of this zone. Appropriate activities in this zone include hunting, timber management to promote forest health, wildlife observation and camping on undeveloped sites. Areas included are:
 - TVA public land under easement, lease or license to other agencies for wildlife or forest management purposes
 - TVA public land fronting land owned by other agencies for wildlife or forest management purposes
 - TVA public land managed for wildlife or forest management projects
 - Informal recreation areas maintained for passive, dispersed recreation activities, such as hunting, hiking, bird-watching, photography, primitive camping, bank fishing and picnicking
 - Shoreline Conservation Areas: narrow riparian strips of vegetation between the water's edge and TVA's back-lying property that are managed for wildlife, water quality or visual qualities
 - Wildlife Observation Areas: TVA Natural Areas with unique concentrations of easily observed wildlife that are managed as public wildlife observation areas
 - River corridor without sensitive resources present: a river corridor is a linear green space along both stream banks of selected tributaries entering a reservoir managed for light boat access at specific sites, riverside trails and interpretive activities

Definitions Cont.

Zone 7: Shoreline Access

- This is TVA-owned land where Section 26a applications and other land use approvals for shoreline alterations are considered. Requests for shoreline alterations are considered on parcels identified in this zone where such use was previously considered and where the proposed use would not conflict with the interests of the general public. Types of development/management that can occur on this land are:
- Water use facilities, e.g., docks, piers, launching ramps/driveways, marine railways, boathouses, enclosed storage space and nonpotable water intakes
- Access corridors, e.g., pathways, wooden steps, walkways or mulched paths, which can include portable picnic tables and utility lines
- Shoreline stabilization, e.g., bioengineering, riprap and gabions and retaining walls
- Shoreline vegetation management on TVA-owned access shoreland
- Conservation easements for protection of the shoreline
- Other activities, e.g., fill, excavation, grading, etc.