



Cheatham County Informational Webinar

January 22, 2025



Agenda

Welcome/Opening Remarks

Cultural Resources Update

Transmission Siting Update

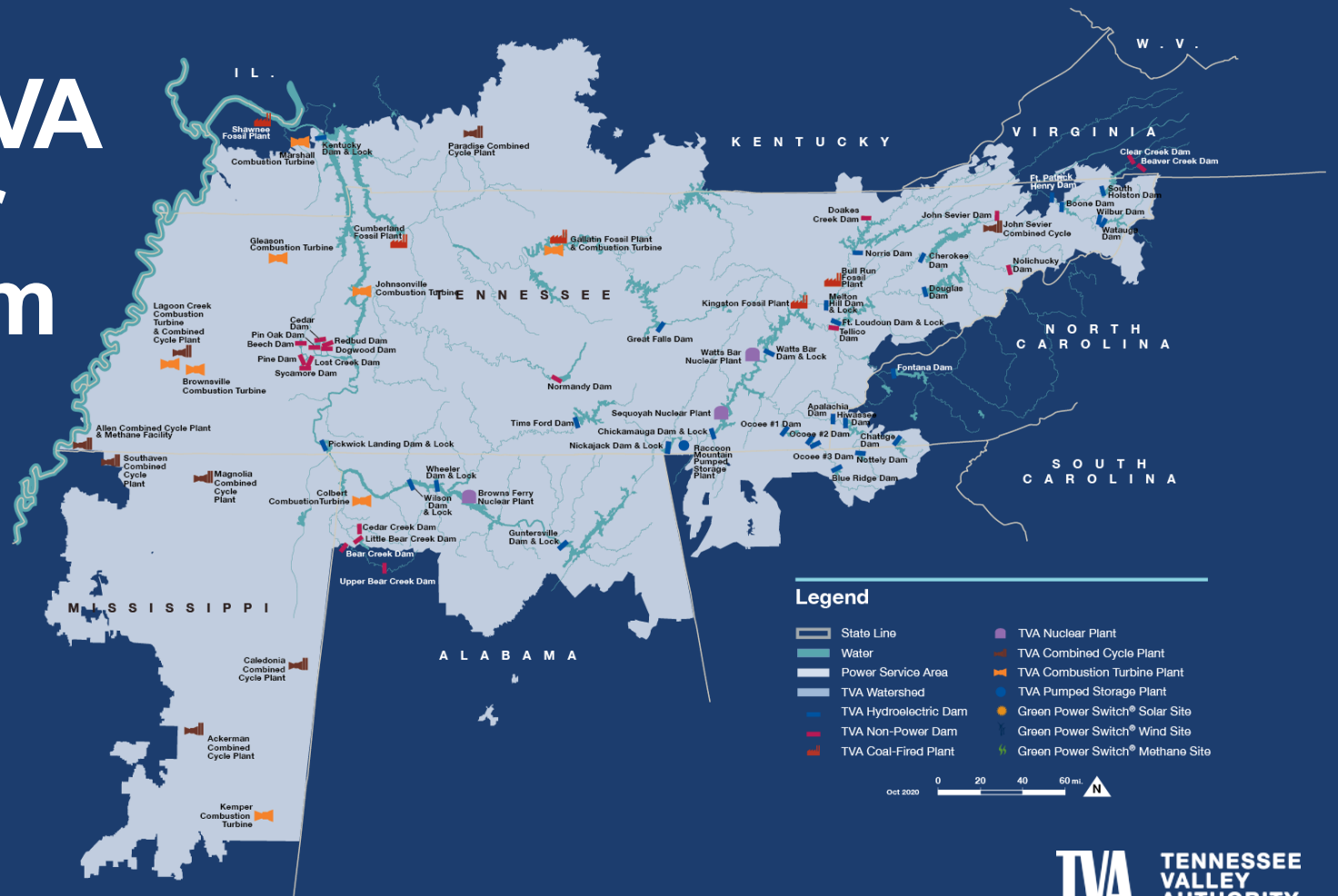
NEPA Update

Community/Communications Updates

Pre-Submitted Community Questions

Conclude

The TVA Power System

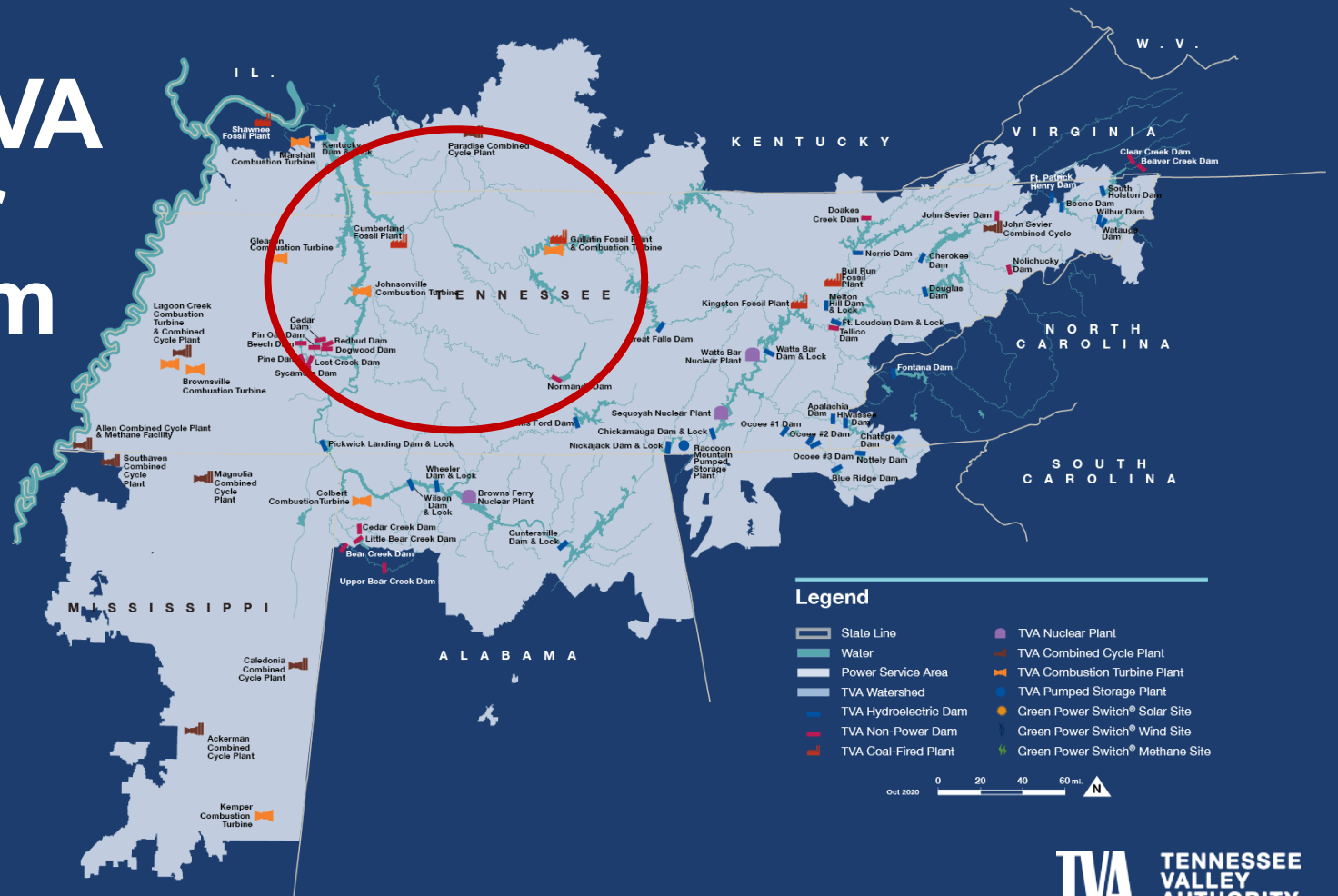


Legend

- State Line
- Water
- Power Service Area
- TVA Watershed
- TVA Hydroelectric Dam
- TVA Non-Power Dam
- TVA Coal-Fired Plant
- TVA Nuclear Plant
- TVA Combined Cycle Plant
- TVA Combustion Turbine Plant
- TVA Pumped Storage Plant
- Green Power Switch® Solar Site
- Green Power Switch® Wind Site
- Green Power Switch® Methane Site



The TVA Power System



Investing in Cleaner Energy



Renewable



Hydro



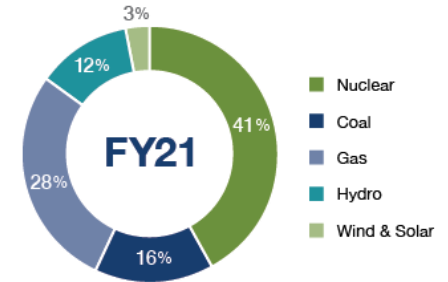
Nuclear



Coal



Natural Gas



Cultural Resources Update

Steve Cole, Manager of Cultural Project Reviews

Cultural Resources



Archaeological sites



Cemeteries

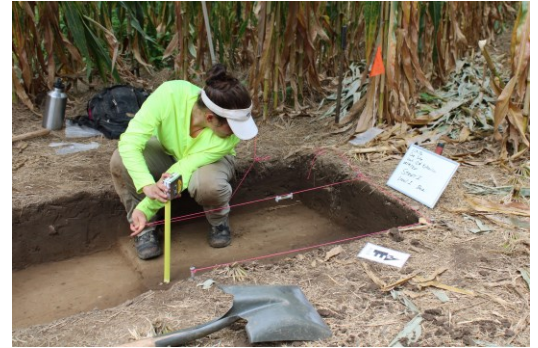


Historic Buildings and Structures

Cultural Resources Laws

As a federal agency, TVA is subject to the National Historic Preservation Act of 1966.

- Federal agencies must take potential project effects on historic properties into consideration.
- Outlines a process for agencies to identify historic properties that could be affected by their projects.
- Requires agencies to consult with others, including State Historic Preservation Officers and Indian tribes.



National Register of Historic Places (NRHP)

Official list of the nation's historic places worthy of preservation

Historic properties: cultural resources that meet criteria of historic significance and have integrity of location, design, setting, materials, workmanship, feeling, and association



Cultural Resources Surveys

- Identification of cultural resources in project area
- Archaeological surveys in project footprint
- Historic architectural surveys in viewshed
- Results documented in a report
- Report sent to State Historic Preservation Offices (SHPOs) and Tribes for comment
- TVA uses results to assess potential project effects



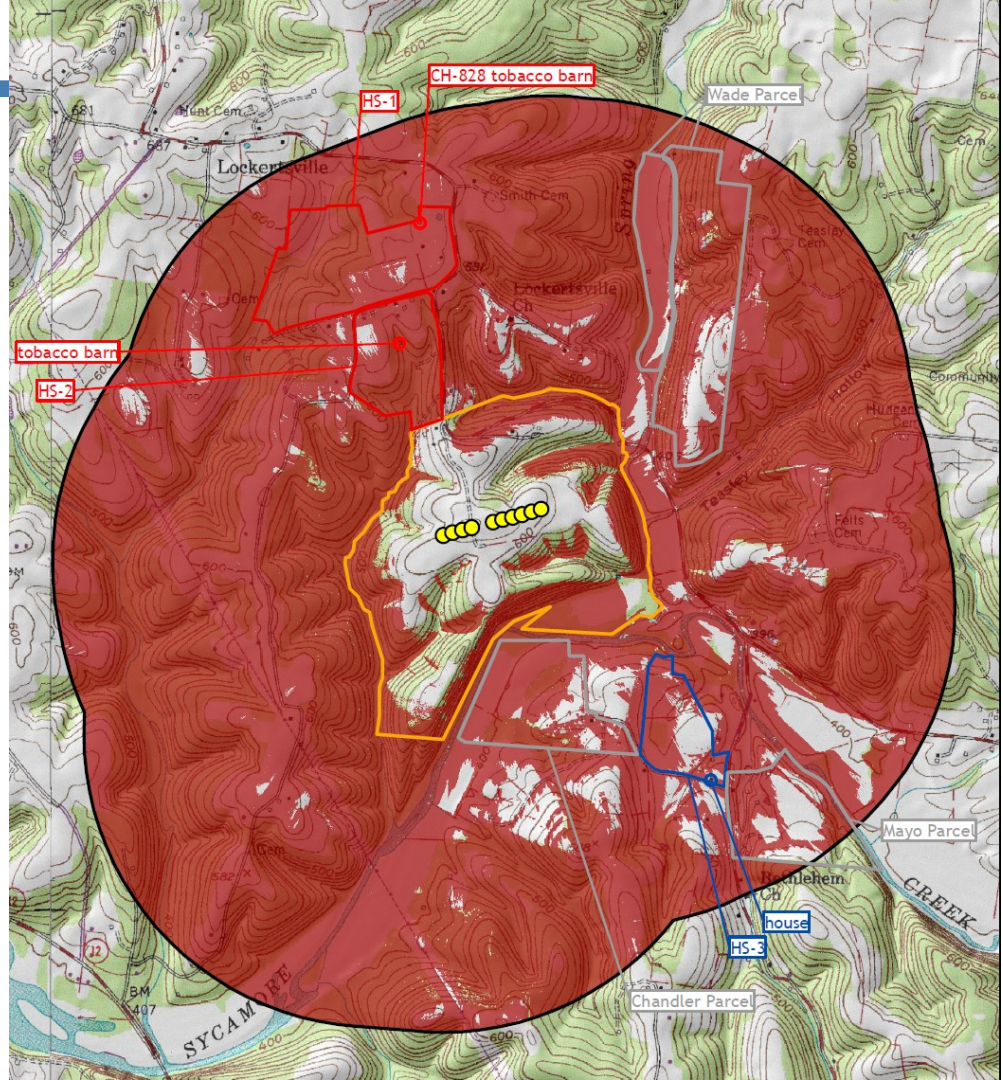
TVA's Cultural Resources Compliance for Cheatham County Proposed Project

- Surveyed entire 286-acre property in 2020.
- In process of completing archaeological surveys for the transmission line.
- Consulted with SHPO and Tribes. All parties concurred there are no National Register-eligible archaeological sites on the property.



TVA's Cultural Resources Compliance for Cheatham County Project

- In 2024, TVA completed a survey of historic architectural resources in viewshed.
- We identified two National Register of Historic Places (NRHP)-eligible properties. Analysis shows the Cheatham project would not cause adverse visual effects.
- Preparing to consult with Tennessee SHPO on the results.



Transmission Siting Update

Taylor Warden, Senior Civil Engineer, Transmission Siting

Transmission Overview

- Phase 1 vs. Phase 2



Recap / Ongoing Efforts

- Open house held on March 6th & 7th 2024 @ Hampton Inn in Ashland City, TN
- 391 property owners representing 479 parcels invited
- Over 320 people attended in-person open house across both days
- Over 100 comments received during 30-day period
- Phase 1 route announcement in April 2024
- Transmission & Environmental Field Surveys for Phase 1



What's next?

- Phase 2 route announcement (Late Feb. 2025)
- What to expect if you receive a letter that a preferred proposed route is affecting your property?

Helpful Links / Contact Information

[Middle Tennessee Generation and Transmission Capacity Expansion Project \(Cheatham and Robertson Counties\)](#)

Contact

Taylor Warden
Newtransline@tva.gov
800-362-4355

Transmission Line 101



NEPA Update

Elizabeth Smith, NEPA Specialist

What is the National Environmental Policy Act (NEPA)?

- Signed into law on January 1, 1970, NEPA was the first major environmental law in the United States and is often called the "Magna Carta" of Federal environmental laws.
- NEPA requires federal agencies to:
 - Consider the potential environmental consequences of their proposals;
 - Consult with other interested agencies, such as the Environmental Protection Agency, US Fish & Wildlife Service, and state historic preservation offices;
 - Document the analysis; and
 - Engage stakeholders by sharing information and soliciting input.
- A NEPA environmental review is intended to inform agency decision-making and must be completed prior to taking an action but does not require any particular outcome.

What is an EIS?

There are three types of environmental reviews conducted under NEPA:

- Environmental Impact Statement (EIS)
- Environmental Assessment (EA)
- Categorical Exclusion Checklist (CEC)

TVA is studying the environmental impacts of the proposed **Cheatham County Generation Project** in an Environmental Impact Statement (EIS), which is the most thorough type of environmental review and includes opportunities for stakeholder engagement.

The following resource areas are typically studied in an EIS:

- Environmental Justice & Socioeconomics
- Air and GHG emissions
- Surface Water
- Groundwater
- Aquatic Species
- Botany
- Terrestrial Species
- Cultural Resources
- Wetlands & Floodplains
- Geology
- Solid and Hazardous Waste
- Navigation
- Transportation
- Noise
- Natural Areas & Recreation
- Prime Farmland

What is the Status of the EIS?

Stay informed by checking the Cheatham County Generation Project and NEPA pages on TVA.com.



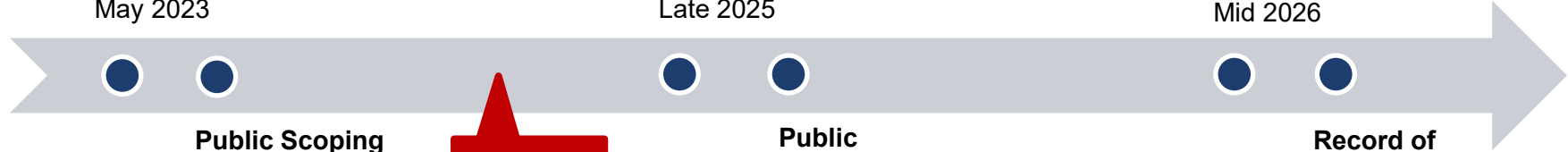
TVA considers scoping comments, conducts studies, and completes analysis of resource areas.

TVA considers and responds to public comments and conducts additional studies if needed.

Notice of Intent (NOI)
May 2023

Draft EIS
Late 2025

Final EIS
Mid 2026



Public Scoping Period

WE ARE HERE

Public Comment Period/Public Meeting

Record of Decision
Mid 2026

Opportunity for members of the public to review proposed action and provide input on the scope of the environmental study.

Opportunity for members of the public to review the draft results of the study and provide formal comments on the EIS.

Community and Communications Update

Justin Maierhofer, North Region Executive

Dedicated Information Page



ENERGY ENVIRONMENT ECONOMIC DEVELOPMENT ABOUT TVA NEWS CAREERS INVESTORS

SEARCH

Essential Facts to Know

As part of the NEPA process, TVA considers light, noise, endangered species, architectural history, Environmental Justice and general community concerns among other factors before making decisions about proposed electricity generation.

To learn more about NEPA and opportunities to share feedback, visit the page below.

[Cheatham County Generation Site](#)

Natural gas generation uses the same fuel many people use in their homes, businesses and farms for water heaters, stoves, fireplaces and other appliances.

[Learn more about natural gas](#)

The potential natural gas generation and BESS facility at the Cheatham County site would require a small footprint of about 75 acres. The majority of the 286-acre site would remain largely forested.

[Learn more about energy storage and BESS](#)

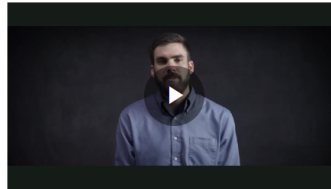
Learn About NEPA

Watch this brief, informative video and learn about how the National Environmental Policy Act guides TVA's projects.



Siting Transmission Lines

Spencer Whittier's role is to find the best route between points A and B while minimizing impacts on people, communities, and the environment.



Frequently Asked Questions

Why is TVA considering natural gas generation for the Cheatham County site?

Do gas plants operate continuously?

www.tva.com/cheatham



TVA in Cheatham County

- Science, Technology, Engineering, and Math (STEM) Grants
- EnergyRight
- Natural Resources
- Community Care Fund in Partnership with CEMC
 - Safe Haven Cheatham County
 - Cheatham County Community Enhancement Coalition
 - Cheatham County Ministerial Alliance
 - Camp Rainbow
 - Bethesda Center
 - Special Olympics Tennessee
 - Second Harvest Food Bank of Middle Tennessee
 - Cope, Inc.
 - United Way of Middle Tennessee

Connected Communities Project at Sycamore High School



Partnership with CCSD began in 2020

Groundbreaking took place in 2022

Construction took place in 2024

Ribbon cutting ceremony took place in 2024

\$188,000 donated from TVA's Connected Communities Program

50 kW Solar Array with Battery Backup



Question and Answer Session

Thank you

Please visit www.tva.com/cheatham for more information or contact the following team members:

Cultural Resources: Steve Cole | sccole0@tva.gov

Transmission: Taylor Warden | newtransline@tva.gov

NEPA: Elizabeth Smith | esmith14@tva.gov

General Questions: tvainfo@tva.gov

The recording of this event will be available on www.tva.com/cheatham in the next 48 hours.