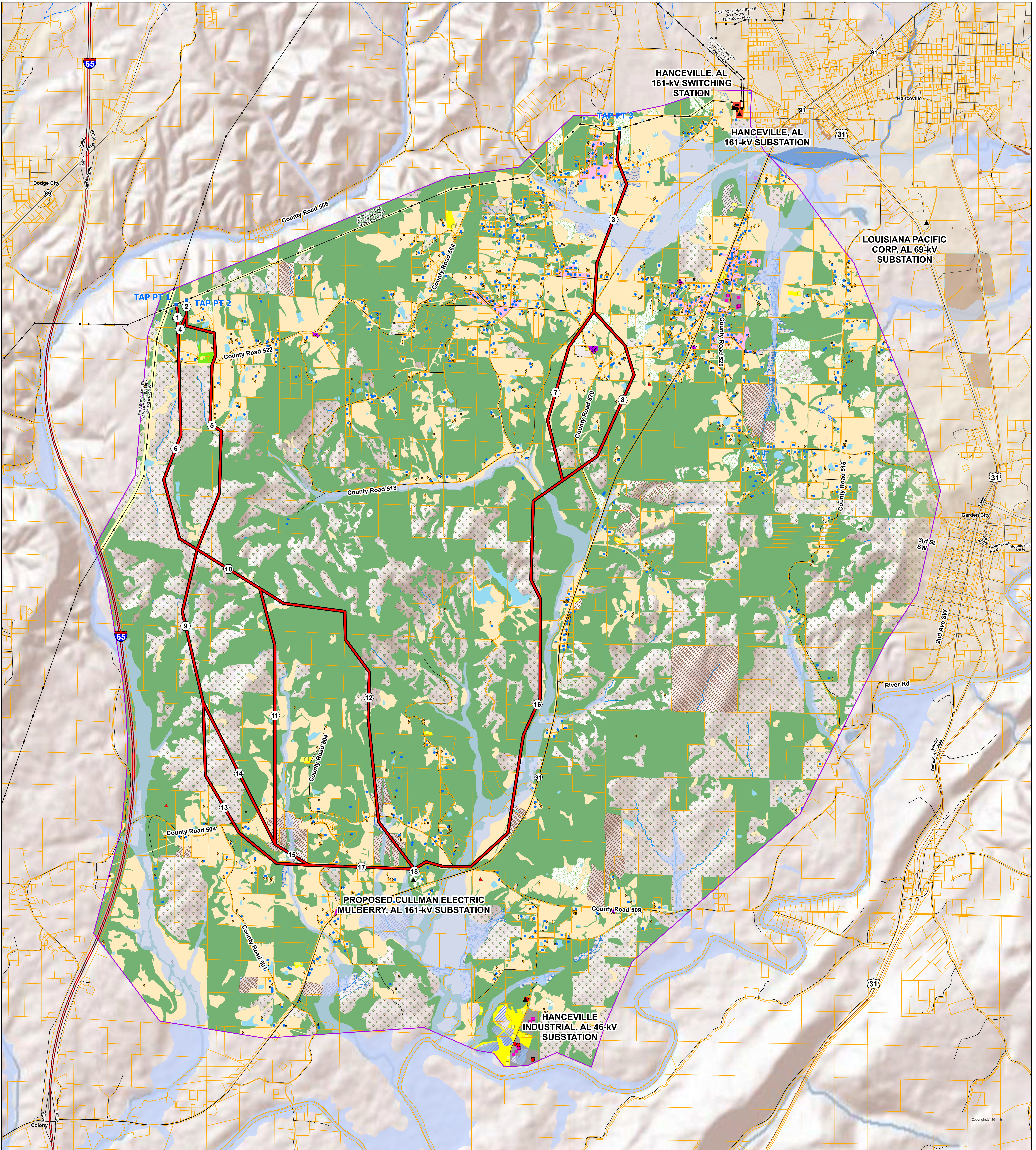
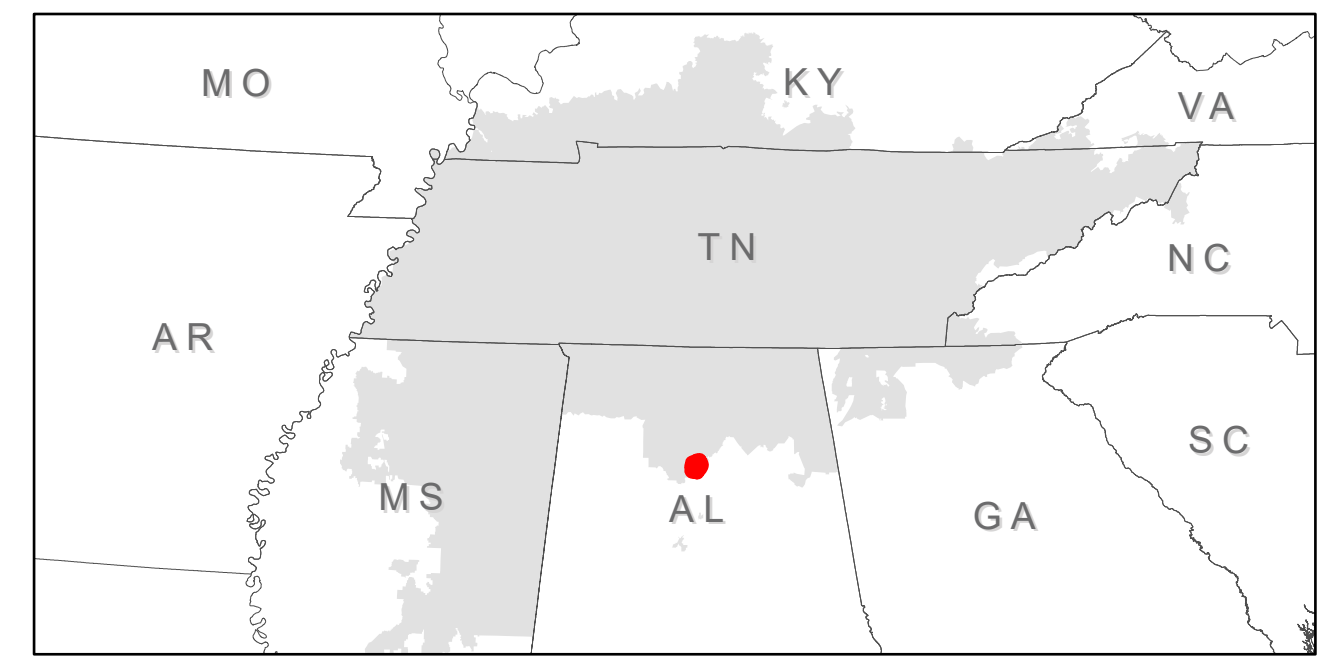
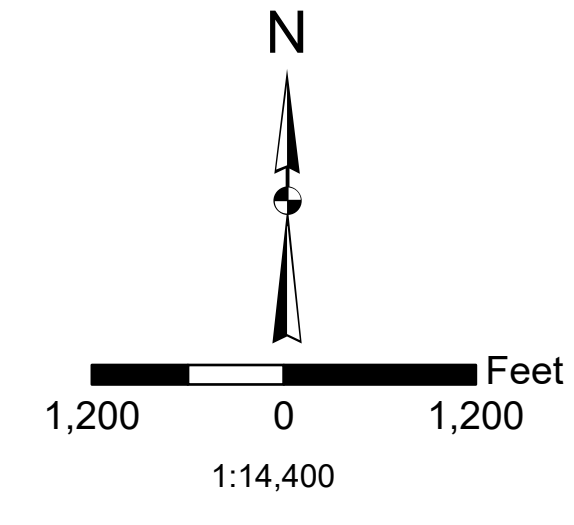


# TVA Mulberry, AL Proposed Transmission Project



|                         |                                |                             |  |                                    |             |                          |
|-------------------------|--------------------------------|-----------------------------|--|------------------------------------|-------------|--------------------------|
| Alternative Routes      | Ephemeral, Intermittent Stream | Barn                        | Major Highway (ROW)                          | Industrial                         | Wetland     | FEMA 100 Year Flood Zone |
| Transmission Stations   | Perennial Stream               | Church                      | Salvage Yard                                 | Residential                        | Shrub/Savub | FEMA Floodway            |
| Transmission Structures | Parcels                        | Commercial                  | Race Course                                  | Cemetery                           | Plantation  | FEMA 500 Year Flood Zone |
| Transmission Lines      |                                | Dwelling                    | Disturbed Area                               | Water Treatment                    | Water       |                          |
|                         |                                | Industrial, Gas or Oil Tank | Substation                                   | Commercial, Service, Institutional | Forest      |                          |
|                         |                                | Radio Tower                 | Floriculture, Orchards, Vineyards, Nurseries | Forest Clear-cut                   | Openland    |                          |
|                         |                                | Water Tank                  | Communication                                | Electric Transmission (ROW)        |             |                          |