

Robust Groundwater Monitoring

DID YOU KNOW...

We will never waiver from our commitment to protecting water resources. We work to ensure that drinking water, groundwater, and surface water in our communities are not impacted by our coal ash sites. We maintain a robust network of monitoring wells that are sampled regularly for groundwater quality. We proactively report the results to regulators and post the results on the TVA website.

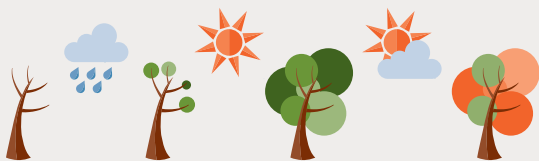
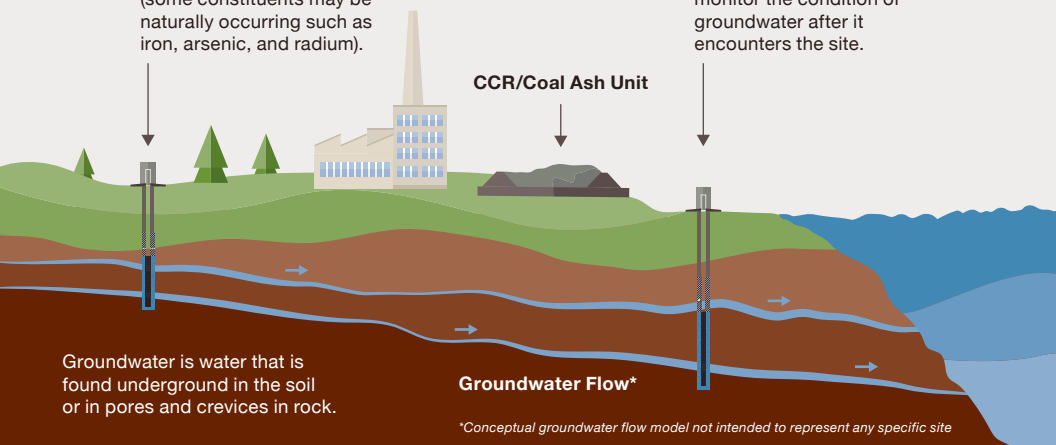
Upgradient Groundwater Monitoring Well

Upstream wells monitor the condition of the groundwater before it encounters the site (some constituents may be naturally occurring such as iron, arsenic, and radium).

CCR/Coal Ash Unit

Downgradient Groundwater Monitoring Well

Downstream wells monitor the condition of groundwater after it encounters the site.



Monitoring is done over periods of time to capture any seasonal fluctuations and changes.



Samples of the groundwater are taken on a regular basis to test for a number of quality measures.



TVA samples for 30 constituents.

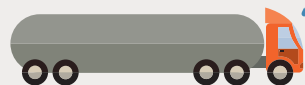


By testing the groundwater regularly, TVA can track compliance with regulatory permits and requirements.

In general, the levels of constituents that are found in groundwater samples are very low.



In the parts per billion (ppb) range or lower.



For example, putting one drop of water into an 11,600-gallon tanker truck used to haul gasoline would produce a water concentration of 1 ppb.

Safe, Responsible Coal Ash Management



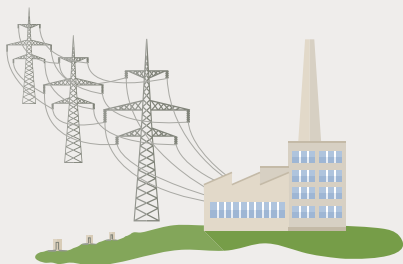
DID YOU KNOW...

Our Commitment to You

The Tennessee Valley is our home. We care about our neighbors and about protecting our air, land, and water resources.

TVA is committed to serving our communities through our mission of providing low-cost, reliable power, environmental stewardship, and economic development.

This commitment also includes the safe, responsible management of coal combustion residuals (CCR), or what is commonly referred to as coal ash, which is a byproduct of burning coal for electricity.



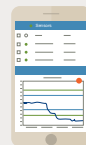
Our state-of-the-art water processing and treatment practices and robust network of groundwater monitoring wells ensure the protection of waterways and natural resources.

We use compaction technology and cutting-edge 3D technology to map each layer of coal ash that is placed into TVA's dry storage landfills to further ensure the safety and stability of our sites



TVA Is an Industry Leader in Safe, Secure Monitoring and Management of Coal Ash

TVA is pioneering new technology and using the best science, data, and research to ensure our coal ash sites are safe and secure.



We designed the Advanced Technology for Impoundment Monitoring (ATIM) system, which is the nation's first and only one of its kind, that monitors our coal ash storage sites 24 hours a day, 365 days a year.



TVA Works with Regulators to Ensure Our Actions Are Safe and Effective

TVA's customized, science-based monitoring and management plans for each of our coal ash sites across the Tennessee Valley meet or exceed regulatory requirements set forth by the Environmental Protection Agency (EPA) and state regulators.

