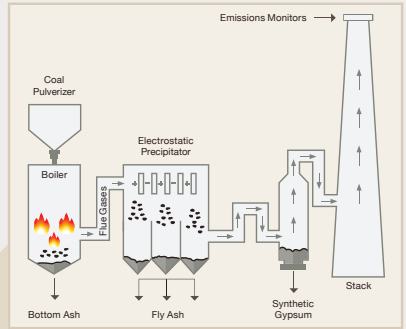
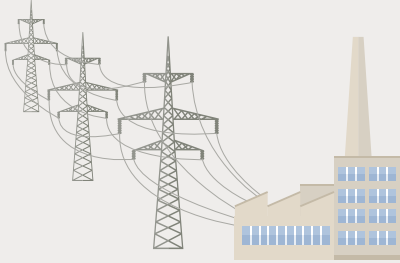


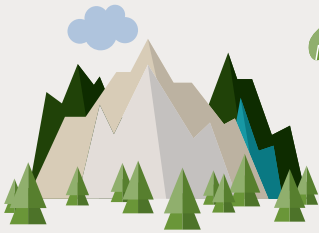
Benefits of Recycling Coal Ash

DID YOU KNOW...

When power plants burn coal to produce electricity, coal combustion residuals (CCR), commonly known as coal ash, are created. Approximately 39% of CCR is beneficially used.



These residuals include fly ash, bottom ash/slag, and synthetic gypsum.



Synthetic gypsum conserves natural resources by replacing natural mined gypsum



Fly ash is used in airport runways

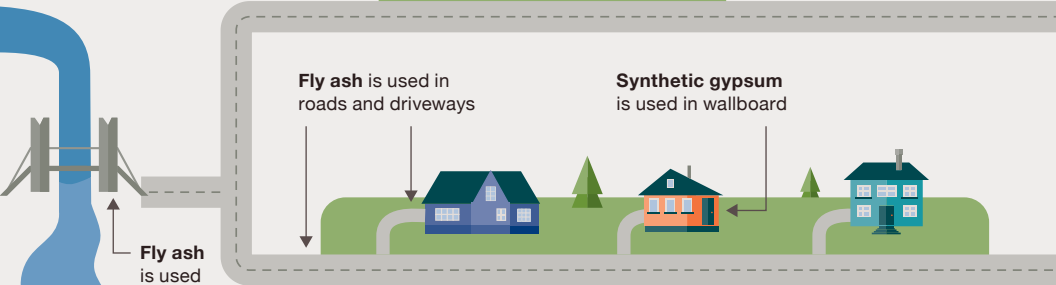
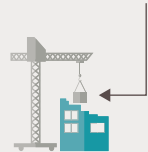


Fly ash is used to replace Portland Cement in the production of concrete

Concrete with **fly ash** is stronger, more durable, lower cost, and environmentally friendly

Fly ash is used in precast concrete products

Every ton of **fly ash** that replaces Portland Cement reduces carbon emissions by 1 ton



Fly ash is used in bridges

Fly ash is used in roads and driveways

Synthetic gypsum is used in wallboard

Fly ash is used in dams

Some **CCR** have properties suitable for metal castings in the aerospace and automotive industries



Safe, Responsible Coal Ash Management



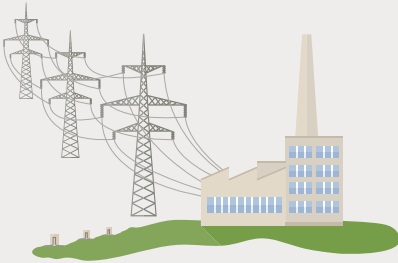
DID YOU KNOW...

Our Commitment to You

The Tennessee Valley is our home. We care about our neighbors and about protecting our air, land, and water resources.

TVA is committed to serving our communities through our mission of providing low-cost, reliable power, environmental stewardship, and economic development.

This commitment also includes the safe, responsible management of coal combustion residuals (CCR), or what is commonly referred to as coal ash, which is a byproduct of burning coal for electricity.



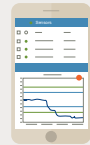
Our state-of-the-art water processing and treatment practices and robust network of groundwater monitoring wells ensure the protection of waterways and natural resources.

We use compaction technology and cutting-edge 3D technology to map each layer of coal ash that is placed into TVA's dry storage landfills to further ensure the safety and stability of our sites.



TVA Is an Industry Leader in Safe, Secure Monitoring and Management of Coal Ash

TVA is pioneering new technology and using the best science, data, and research to ensure our coal ash sites are safe and secure.



We designed the Advanced Technology for Impoundment Monitoring (ATIM) system, which is the nation's first and only one of its kind, that monitors our coal ash storage sites 24 hours a day, 365 days a year.



TVA Works with Regulators to Ensure Our Actions Are Safe and Effective

TVA's customized, science-based monitoring and management plans for each of our coal ash sites across the Tennessee Valley meet or exceed regulatory requirements set forth for these plans by the Environmental Protection Agency (EPA) and state regulators.

