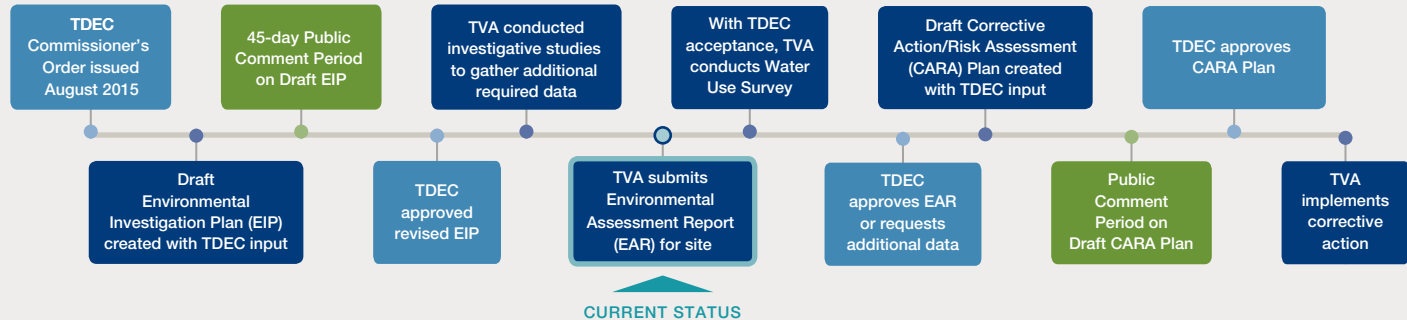


TDEC Order Environmental Investigation Process



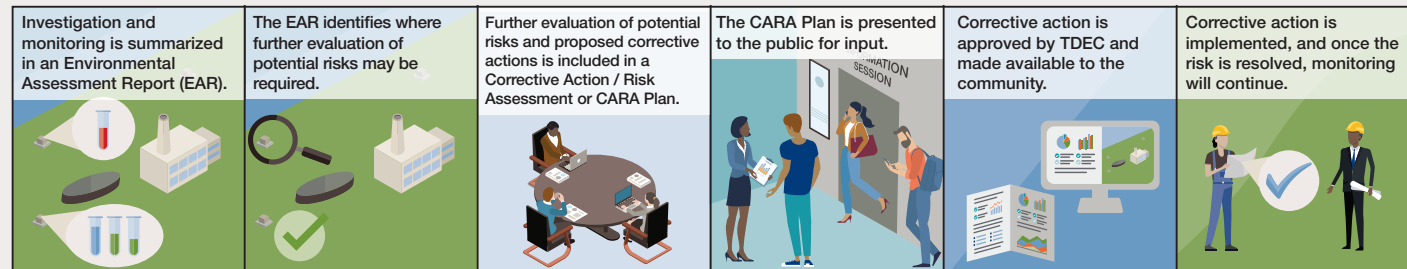
Tennessee Valley Authority (TVA) is conducting environmental studies under the oversight of the Tennessee Department of Environment and Conservation (TDEC) as directed by a TDEC Commissioner's Order (TDEC Order). The TDEC Order created a process by which Coal Combustion Residuals (CCR) management units would be investigated and assessed for unacceptable risks. It also provides the requirements for reducing these risks through corrective action. The steps for investigating CCR management units and for reducing unacceptable risks are shown below.



What is the purpose of the investigation?

According to the TDEC Order, the objective of the investigation was to "identify the extent of soil, surface water, and ground water contamination by CCR" from TVA's management of CCR in impoundments and landfills at its plant sites.

In addition, per TDEC's information requests, the investigation included assessment of CCR management unit structural stability and integrity.



Cumberland Fossil Plant Investigation Results



- * No sediment or surface water sample results above regulatory values or approved levels in the Cumberland River
- * Additional stability assessments needed for current conditions, and for future conditions once closure is defined

Key Findings

More than 98% of the environmental sample results were **below the approved levels**.

Ecological communities are healthy in the Cumberland River and Wells Creek adjacent to and downstream of the Coal Combustion Residuals (CCR) management units.

Based on the Environmental Investigation and other ongoing monitoring results, the CCR management units have had minimal, if any, potential impacts on the surface stream water quality, benthic macroinvertebrate community, and mayflies and fish in Wells Creek or the Cumberland River.

Investigation and Monitoring Findings

These symbols summarize the findings of the investigation and monitoring:



No action is needed.



Further evaluation is required in this area.



Corrective action is being evaluated for on-site groundwater along the perimeter of the unit in this area.

Next Steps

With TDEC acceptance of the technical approach proposed in the Environmental Assessment Report, TVA will conduct a Water Use Survey to determine whether CCR management has impacted off-site wells and springs in the area.

TVA will further evaluate these findings and prepare a Corrective Action/Risk Assessment (CARA) Plan for submittal to TDEC.

The CARA Plan will:

- evaluate whether unacceptable risks related to management of CCR exist at the Cumberland Fossil Plant,
- specify the actions TVA plans to take at the Cumberland Fossil Plant CCR management units and the basis of those actions, and
- incorporate other operational changes planned or in progress by TVA.