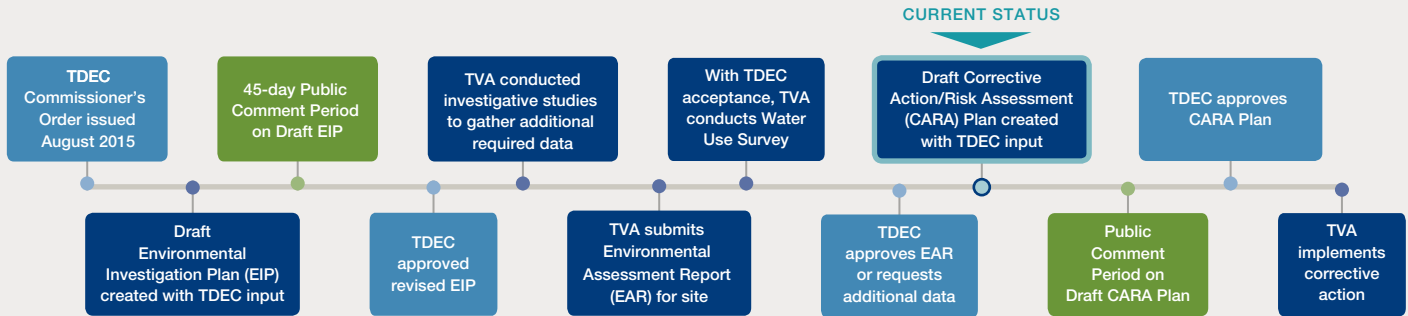


# TDEC Order Environmental Assessment



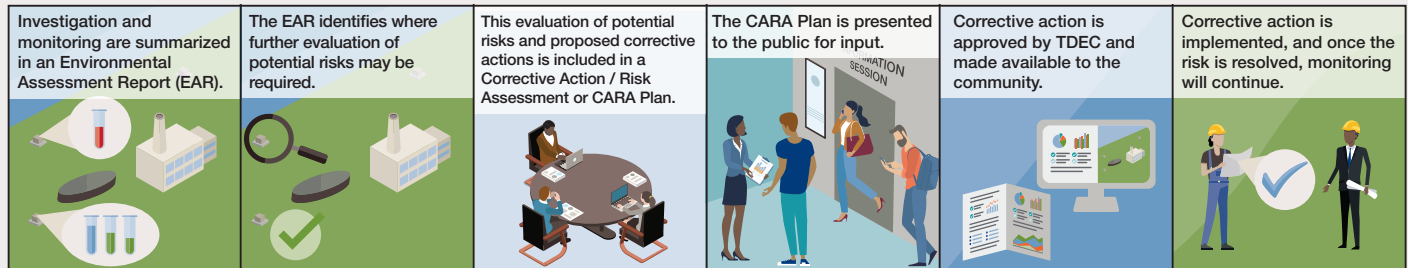
Tennessee Valley Authority (TVA) is conducting environmental studies under the oversight of the Tennessee Department of Environment and Conservation (TDEC) as directed by a Commissioner's Order (TDEC Order). The TDEC Order created a process by which coal combustion residuals (CCR) management units would be assessed for unacceptable risks. It also provides the requirements for reducing these risks through corrective action. The steps for investigating CCR management units and for addressing unacceptable risks are shown below.



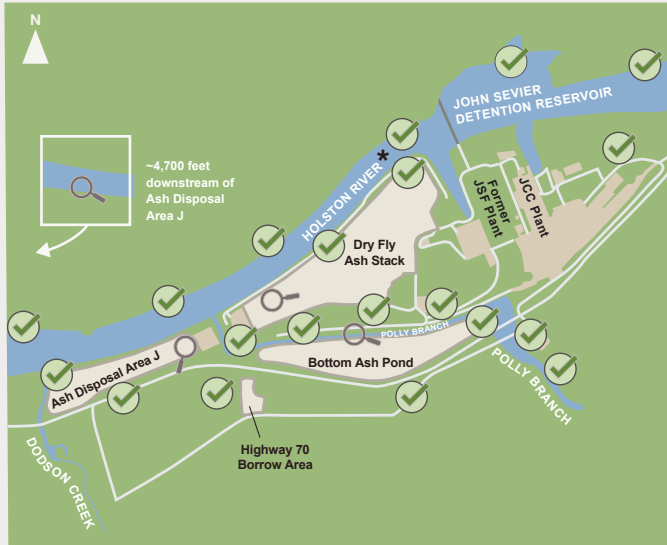
## What is the purpose of the assessment?

According to the TDEC Order, the objective of the assessment is to identify impacts to soil, surface water, and groundwater from TVA's management of coal ash in impoundments and landfills at its plant sites.

The assessment also includes evaluating the structural stability and integrity of the coal ash management unit.



# John Sevier Fossil Plant Assessment Demonstrates TVA's Responsible Management of Coal Ash



\* None of the surface water sample results in the Holston River were above approved levels

CCR Management Unit

Note: Mercury results in Holston River sediments are not depicted on this exhibit nor recommended for further evaluation in the corrective action plan because they are considered unrelated to the retired John Sevier Fossil Plant.

## Key Findings

The ecological communities are healthy in the Holston River adjacent to and downstream of the CCR management units based on the results of the environmental assessment and other monitoring efforts.

Nearly all of the environmental sample results were well below the approved levels.

Additionally, current and historical CCR management associated with the John Sevier Plant have not affected water supply wells or springs located in the vicinity of the plant based on the results of the water use survey.

This means that TVA is managing its CCR units that is protective of the environment and surrounding community.

## Investigation and Monitoring Findings

These symbols summarize the findings of the investigation and monitoring:



No action is needed.



Further evaluation is required in this area.

## Next Steps

With TDEC approval, TVA will use the findings from the environmental assessment to prepare and submit a corrective action plan and will specify all measures TVA plans to take to address unacceptable risk. This corrective action plan will be released for public comment.

TVA's efforts will continue until regulators are satisfied, and monitoring of groundwater will continue for many years.