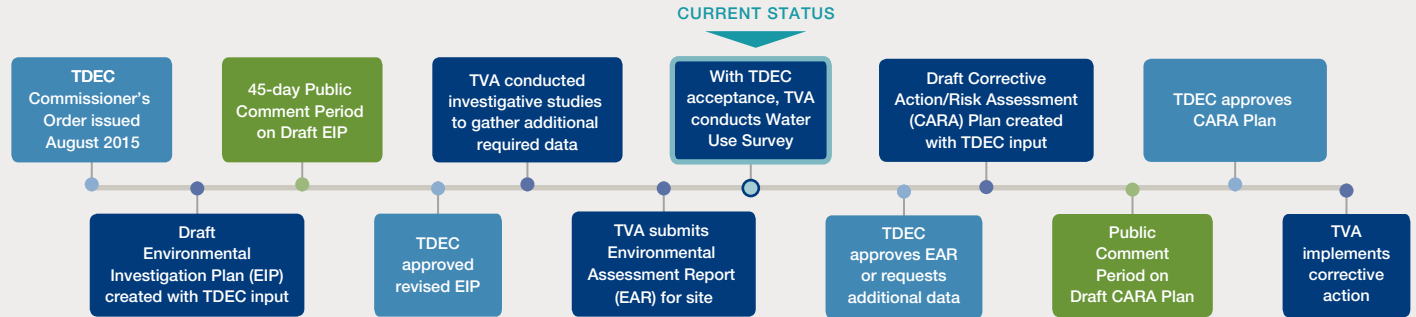


TDEC Order Environmental Assessment

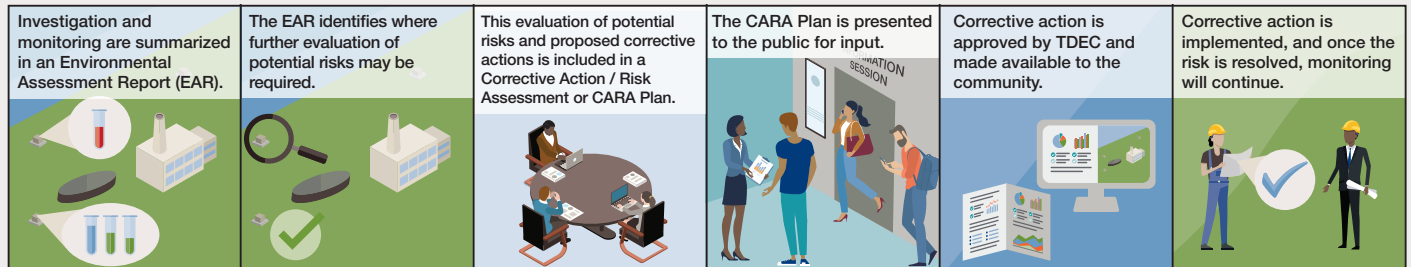
Tennessee Valley Authority (TVA) is conducting environmental studies under the oversight of the Tennessee Department of Environment and Conservation (TDEC) as directed by a Commissioner's Order (TDEC Order). The TDEC Order created a process by which coal combustion residuals (CCR) management units would be assessed for unacceptable risks. It also provides the requirements for reducing these risks through corrective action. The steps for investigating CCR management units and for addressing unacceptable risks are shown below.



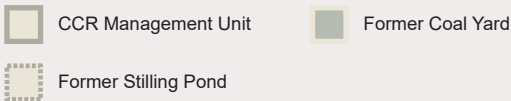
What is the purpose of the assessment?

According to the TDEC Order, the objective of the assessment is to identify impacts to soil, surface water, and groundwater from TVA's management of coal ash in impoundments and landfills at its plant sites.

The assessment also includes evaluating the structural stability and integrity of the coal ash management unit.



Johnsonville Fossil Plant Assessment Demonstrates TVA's Responsible Management of Coal Ash



Key Findings

The ecological communities are healthy in the Kentucky Lake/Tennessee River adjacent to and downstream of the CCR management units based on the results of the environmental assessment and other monitoring efforts.

Nearly all of the environmental sample results were below the approved levels.

The health of the aquatic life is a key indicator of the health of the Kentucky Lake/Tennessee River. This means that TVA is managing its CCR units in a way that's protective of the environment.

Investigation and Monitoring Findings

These symbols summarize the findings of the investigation and monitoring:

- No action is needed.
- Further evaluation is required in this area.
- Corrective action is being evaluated for seismic stability along the perimeter of the unit in this area.

Next Steps

With TDEC acceptance of the environmental assessment, TVA will further evaluate certain areas for potential corrective action and will conduct a water use survey to better understand groundwater conditions around the Johnsonville Fossil Plant.

TVA will use the findings from the environmental assessment to prepare and submit a corrective action plan to TDEC. This plan, which will be released for public review and comment, will specify measures TVA plans to take to address unacceptable risks.

TVA's efforts will continue until regulators are satisfied, and monitoring of groundwater will continue for many years.