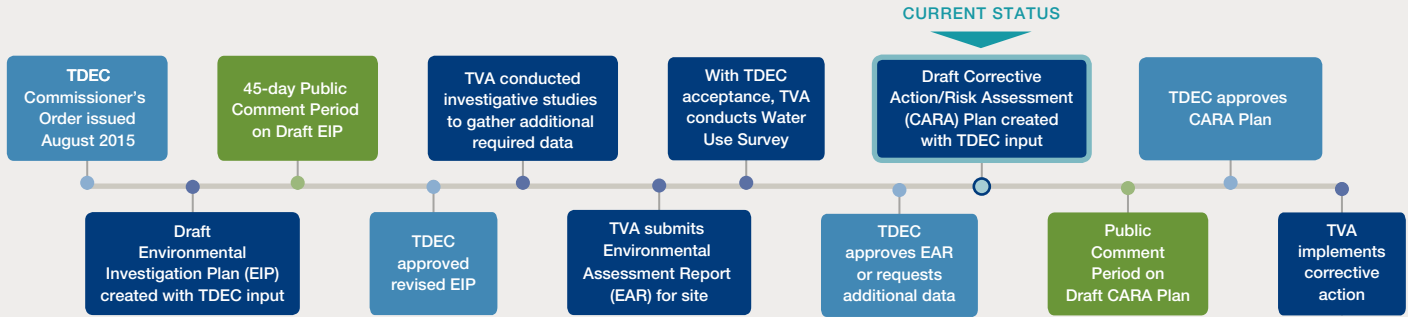


TDEC Order Environmental Assessment



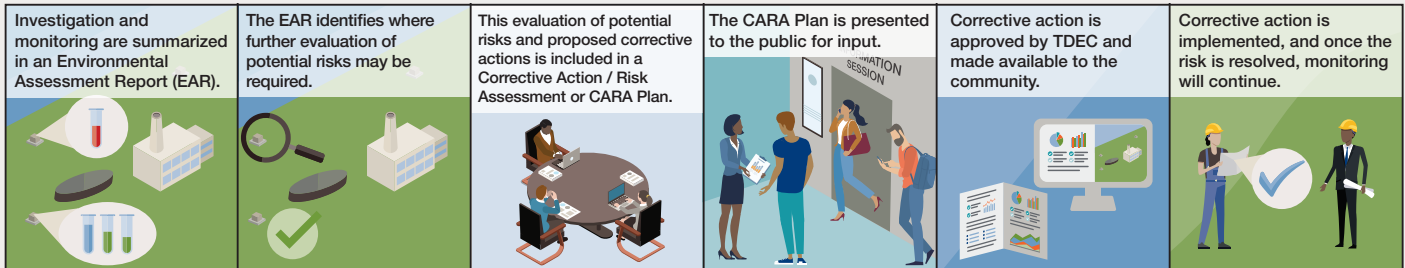
Tennessee Valley Authority (TVA) is conducting environmental studies under the oversight of the Tennessee Department of Environment and Conservation (TDEC) as directed by a Commissioner's Order (TDEC Order). The TDEC Order created a process by which Coal Combustion Residuals (CCR) management units would be assessed for unacceptable risks. It also provides the requirements for reducing these risks through corrective action. The steps for investigating CCR management units and for reducing unacceptable risks are shown below.



What is the purpose of the assessment?

According to the TDEC Order, the objective of the assessment is to identify impacts to soil, surface water, and groundwater from TVA's management of coal ash in impoundments and landfills at its plant sites.

The assessment also includes evaluating the structural stability and integrity of the coal ash management unit.



Kingston Fossil Plant Assessment Demonstrates TVA's Responsible Management of Coal Ash



- ✱ TVA is continuing long-term ecological monitoring in the Emory, Tennessee, and Clinch Rivers to confirm Kingston Recovery Project remedial objectives are met and that there are no adverse impacts to ecological communities.
- ✱ Slopes are stable under current static conditions. Additional mitigation measures are being designed for seismic conditions.

The KRP Ash Landfill is not part of this assessment and is regulated by the TDEC Division of Solid Waste Management.

Key Findings

The ecological communities are healthy in the Emory, Tennessee, and Clinch Rivers adjacent to and downstream of the CCR management units based on the results of the environmental study and other ongoing monitoring efforts.

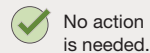
Nearly all of the environmental sample results were below the approved levels.

Additionally, current and historical CCR management associated with the Kingston Plant have not affected water supply wells or springs located in the vicinity of the plant based on the results of the water use survey.

This means that TVA is managing its CCR units that is protective of the environment and surrounding community.

Investigation and Monitoring Findings

These symbols illustrate the findings of the assessment and monitoring:



No action is needed.



Corrective action is being evaluated in this area.

Next Steps

With TDEC acceptance of the environmental assessment, TVA will further evaluate certain areas for potential corrective action.

TVA will use these findings to prepare and submit a corrective action plan to TDEC. This plan, which will be released for public review and comment, will specify measures TVA plans to take to address unacceptable risks.

TVA's efforts will continue until regulators are satisfied, and monitoring of groundwater will continue for many years.