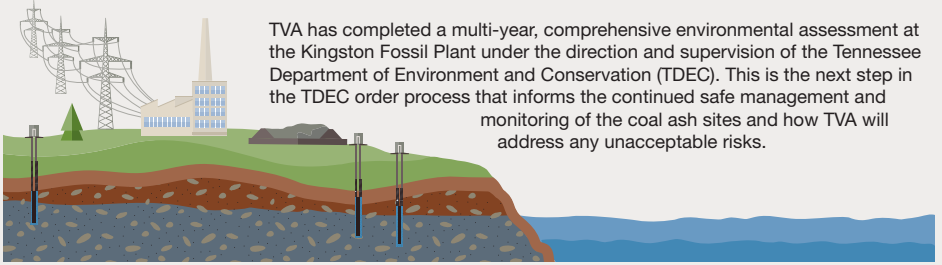


Five Things to Know About the Kingston Fossil Plant's Coal Ash Management and Environmental Assessment



TVA has completed a multi-year, comprehensive environmental assessment at the Kingston Fossil Plant under the direction and supervision of the Tennessee Department of Environment and Conservation (TDEC). This is the next step in the TDEC order process that informs the continued safe management and monitoring of the coal ash sites and how TVA will address any unacceptable risks.

TVA Is a Community Partner

We are driven by a mission to serve our neighbors and are committed to safe and secure coal ash management.



TVA's Environmental Assessment Demonstrates the Health of the Environment Near the Plant

Nearly all of the environmental sample results were within approved levels that are protective of the environment. Results of the environmental assessment and other ongoing monitoring efforts show that ecological communities are healthy in or near the Clinch, Emory, and Tennessee Rivers.



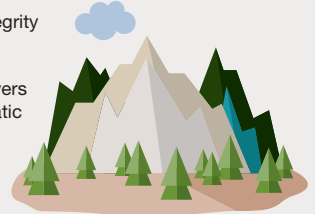
TVA Is an Industry Leader in the Safe, Responsible Management of Coal Ash

TVA has pioneered new technology and uses the best science, data, and research to ensure our coal ash sites are safe and secure, which has enabled us to implement best practices years before they were required by federal regulations.



TVA Is Committed to Protecting Natural Resources

TVA is managing its coal ash units in a way that protects the ecological integrity of the Clinch, Emory, and Tennessee Rivers and their aquatic communities.



TVA Listens to Our Neighbors

With TDEC approval, the next step in the process includes TVA further evaluating certain areas for potential corrective action and conducting a water use survey to better understand off-site groundwater conditions in areas surrounding the Kingston Fossil Plant.

TVA will use these findings to prepare and submit a corrective action plan, which will be released for public review and comment and will specify measures TVA plans to take to address any unacceptable risks.

