

Chickamauga Reservoir Land Management Plan - Summary of Allocation Changes

Land use allocation changes on Chickamauga Reservoir that have occurred since the 2017 Chickamauga Reservoir Land Management Plan (RLMP) was completed are summarized below:

Parcel & Tract No.	2017 Chickamauga RLMP		Allocation Change Description ²	Justification ³
	Allocation ¹	Acres		
Parcel 354 (XCR-354PT2)	Zone 4	0.8	<ul style="list-style-type: none"> The entire parcel has been reallocated to Zone 6 and remains Parcel 354. 	Administrative Error

¹ See [definitions of the land planning zones](#)

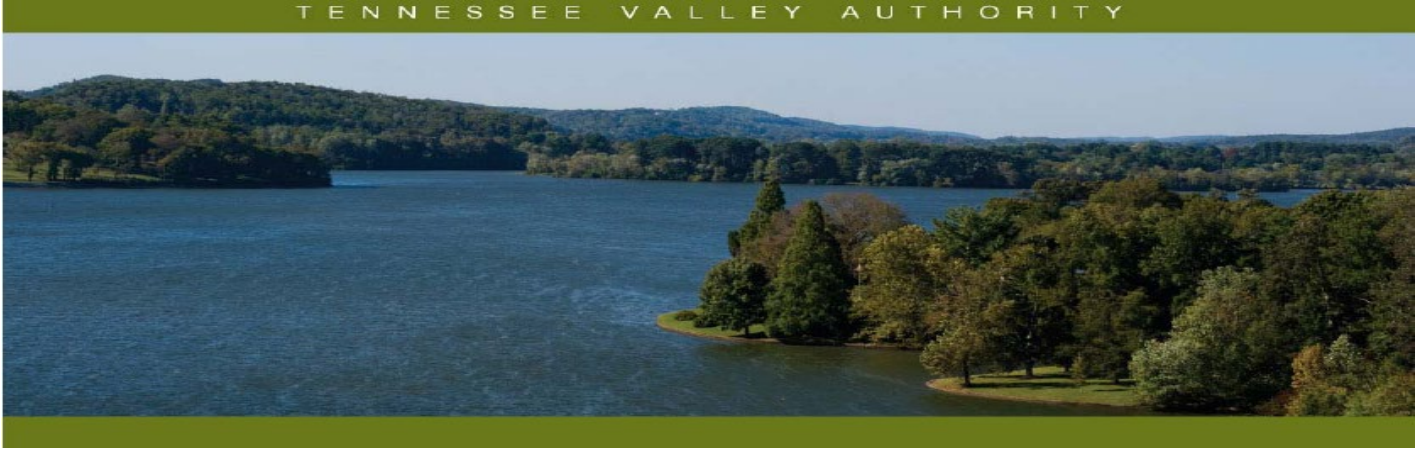
² More information is available in the fact sheet below. The fact sheets for allocation changes are considered a supplement to the 2017 Chickamauga RLMP.

Land Use Allocation Changes

After approval of a [reservoir land management plan](#) by TVA, all future uses of TVA-managed lands on that reservoir must then be consistent with the allocations within that RLMP.

³ In accordance TVA policies and guidelines, allocation changes after approval of an RLMP are only allowable under limited circumstances described below:

- (1) To correct administrative errors that occurred during the planning process
- (2) To implement TVA's [Shoreline Management Policy](#), consistent with the TVA [Land Policy](#)
- (3) To allow water-access for industrial or commercial recreation operations on private backlying property, consistent with the TVA [Land Policy](#)



Chickamauga Reservoir Land Management Plan Error – Plan Tract No. XCR-354PT2

Reservoir Land Planning Errors

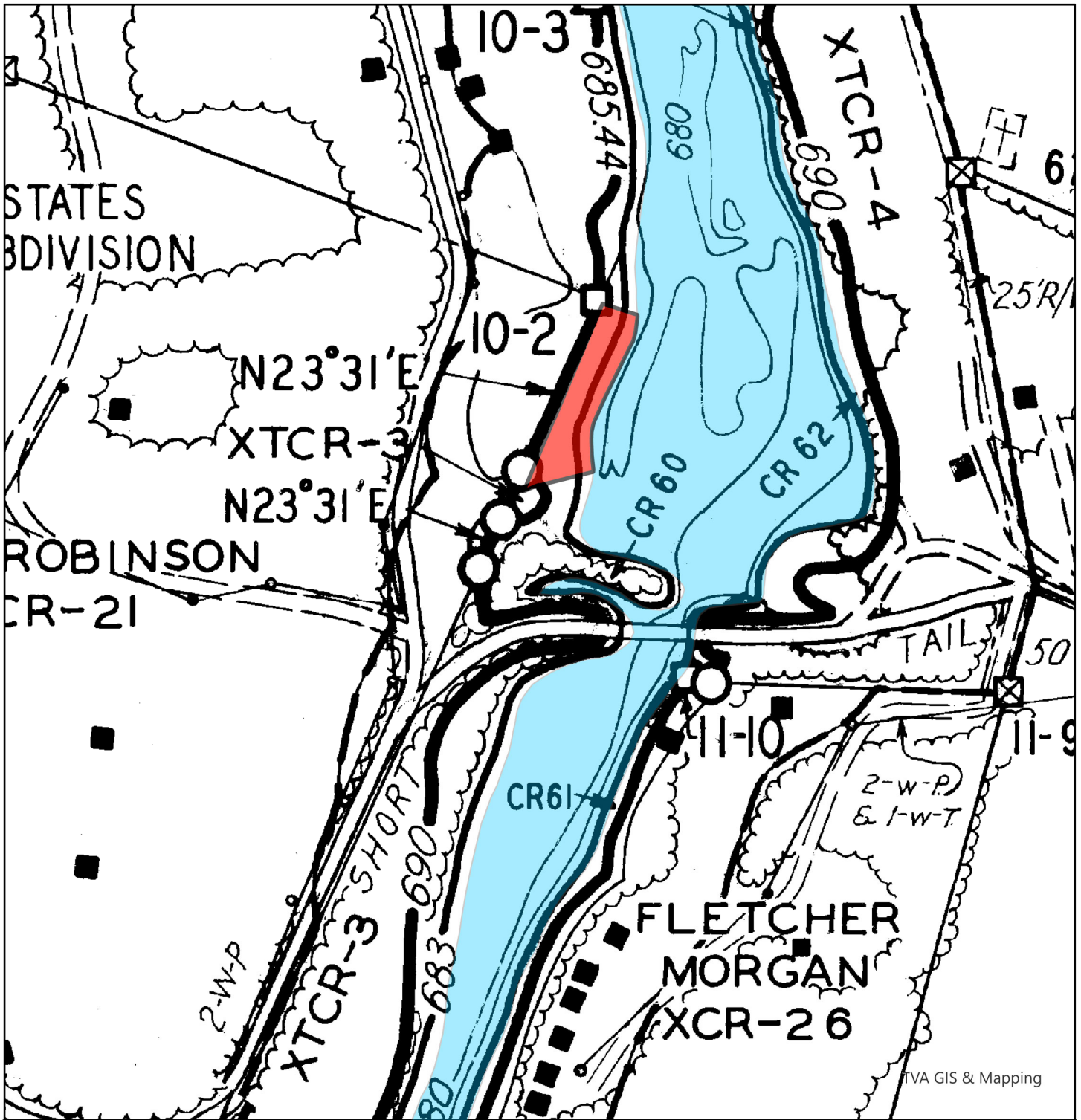
After approval of a reservoir land management plan (RLMP) by the Tennessee Valley Authority (TVA), future uses of TVA-managed lands on that reservoir must then be consistent with the land use allocations within that land plan. Recent research shows that former TVA lands adjacent to Parcel 354 (XCR-354PT2) on Chickamauga Reservoir has outstanding rights over the tract. This document addresses the resolution of the error through the reallocation of the 0.8-acre parcel from Zone 4 (Natural Resources Conservation) to Zone 6 (Developed Recreation) and is considered a supplement to the 2017 Chickamauga RLMP. Definitions of TVA’s land planning allocation zones are available at <https://www.tva.com/landplanzones>.

General Information about Chickamauga Reservoir

Chickamauga Reservoir is an impoundment of the Tennessee River formed by Chickamauga Dam, which is located at Tennessee River mile 471.0. Chickamauga Reservoir is situated in Bradley, Hamilton, McMinn, Meigs, Polk, and Rhea counties in east Tennessee. Chickamauga Reservoir has about 784 miles of shoreline and TVA owns approximately 16,061.4 acres of reservoir shoreland. At full pool, the reservoir is approximately 59-miles-long with a reservoir surface area of 36,240 acres.

Chickamauga Parcel 354 (XCR-354PT2)

XCR-354PT2 (0.8 acre) is located in Hamilton County along the left descending bank of Wolftever Creek at Tennessee River mile 478.6L. In the 2017 Chickamauga RLMP, Parcel 354 is allocated for “Natural Resource Conservation.” A transfer tract managed for public recreation (XTCR-3) is adjacent to Parcel 354 and retains rights to operate public recreation facilities across the entirety of Parcel 354 through the transfer agreement. Therefore, the appropriate allocation is “Developed Recreation.” In order to correct the mapping error, Parcel 354 has been reallocated to “Developed Recreation.” The correction of the parcel allocation reflects the outstanding rights for a legal instrument in existence but misinterpreted at the time of the lands plan.




TVA GIS & Mapping

Exhibit Map

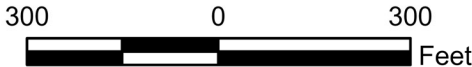
Proposed Allocation Change
 Hamilton County, Tennessee
 XCR-354PT2

Map Reference:
 C/D Stage: 11
 Quad: 112NE

 XCR-354PT2 - Reallocate Entire Parcel To Zone 6 (Approx. 0.8 acres)



Tennessee River Mile 478.6L, Wolftever Creek



Chickamauga Reservoir

September 15, 2023