

# How to Use Land Planning Viewer Map

The Interactive Viewer Map allows you to zoom in and out of the map, change the Basemap (aerial photography, topographical map, etc.) and select information about TVA Reservoir Parcels.

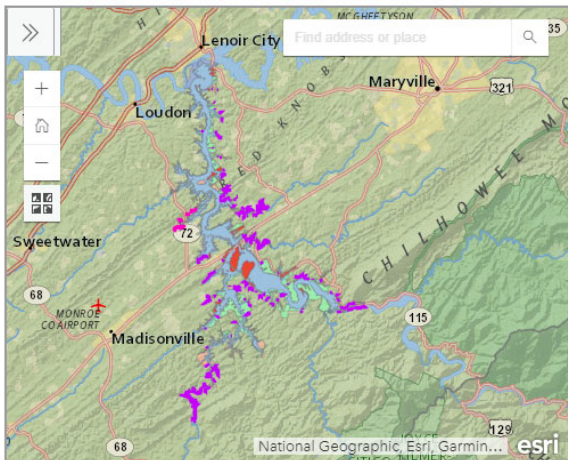
---

## Maps

The proposed individual parcel allocations can be examined on the maps below:

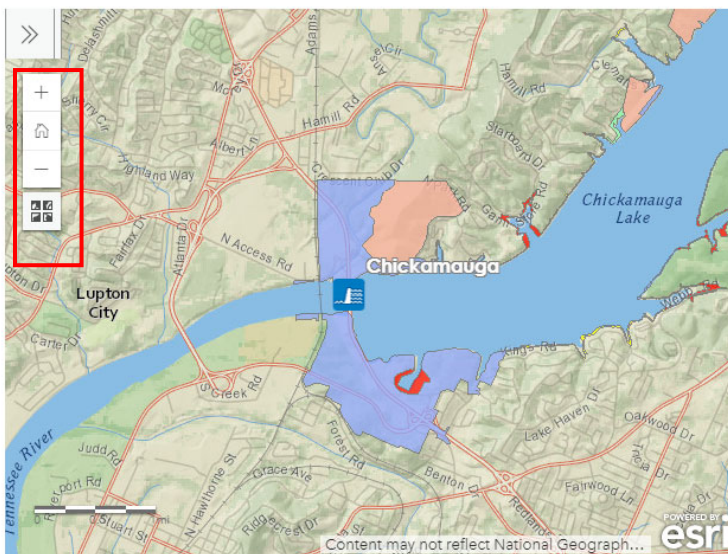
[View Larger Map](#)




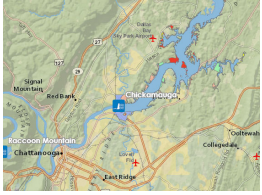

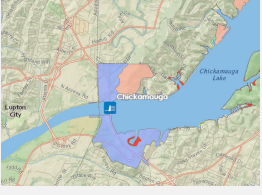

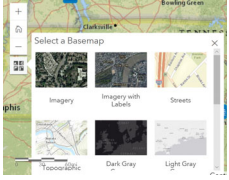
[How to Use the Map Viewer](#)



## Viewer Map Navigation

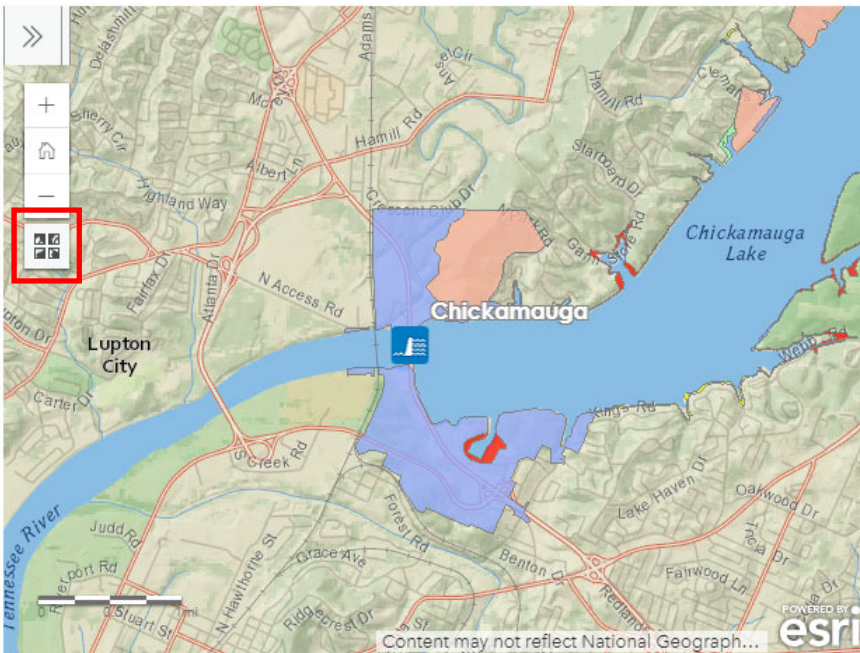
The following tools are used for navigation around the interactive map.



Navigation Tool	Description	Example
	<p>The <b>'Plus'</b> button zooms the map in to allow you to see more detail in the map</p>	
	<p>The <b>'Minus'</b> button zooms the map out to allow you to see less detail in the map</p>	
	<p>The <b>'Home'</b> button takes you back to the default area of the reservoir as it was first loaded on the map</p>	
	<p>The <b>'Basemap'</b> icon allows you to select different background map options</p>	

## Basemap

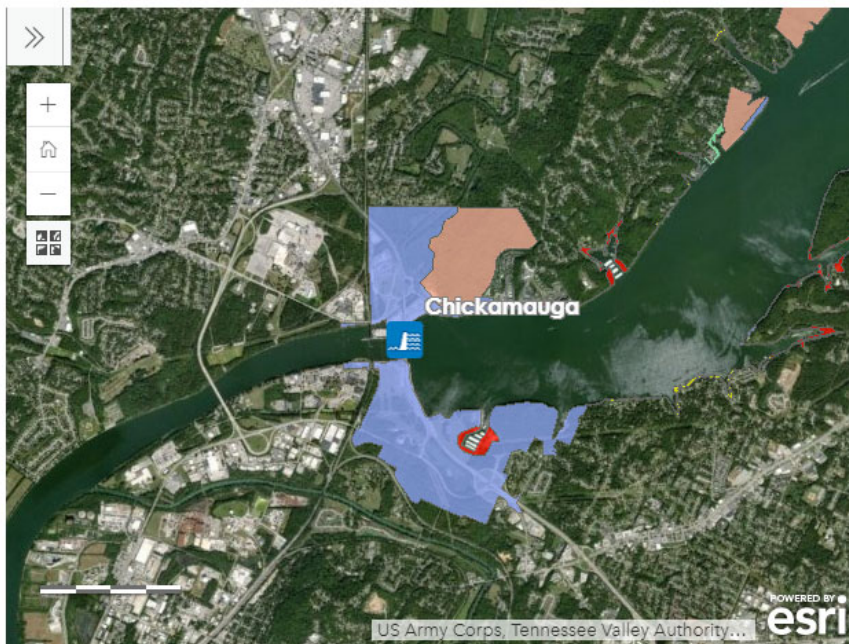
The underlying Basemap (background) can be changed to something more suitable for your needs. Click the 'Basemap' icon to access different Basemap options.



Select a new Basemap to change what you are seeing underneath the map layers.



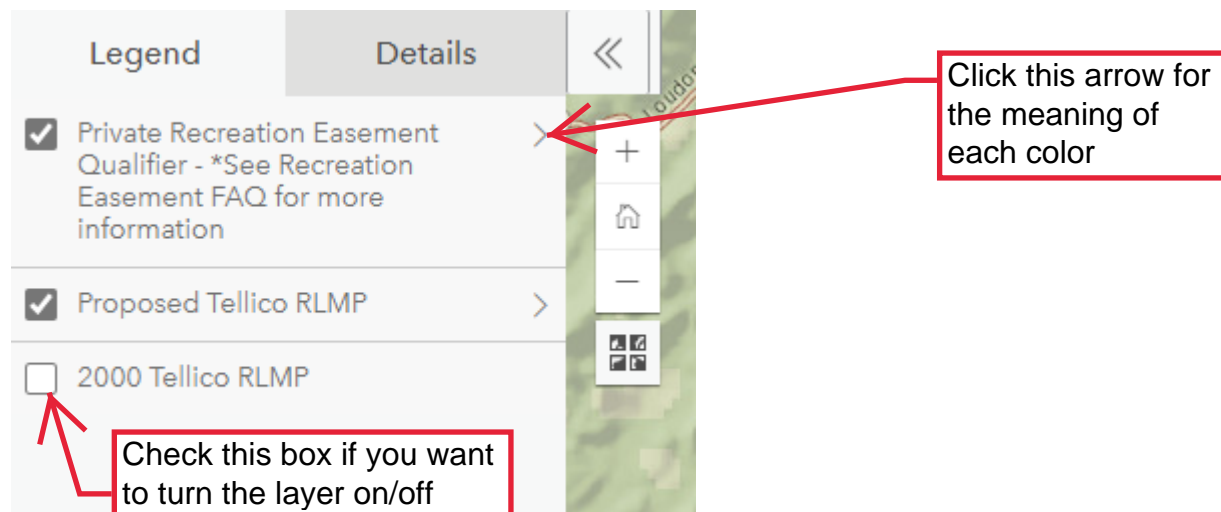
For example, the **Imagery** Basemap is being displayed in the map below:



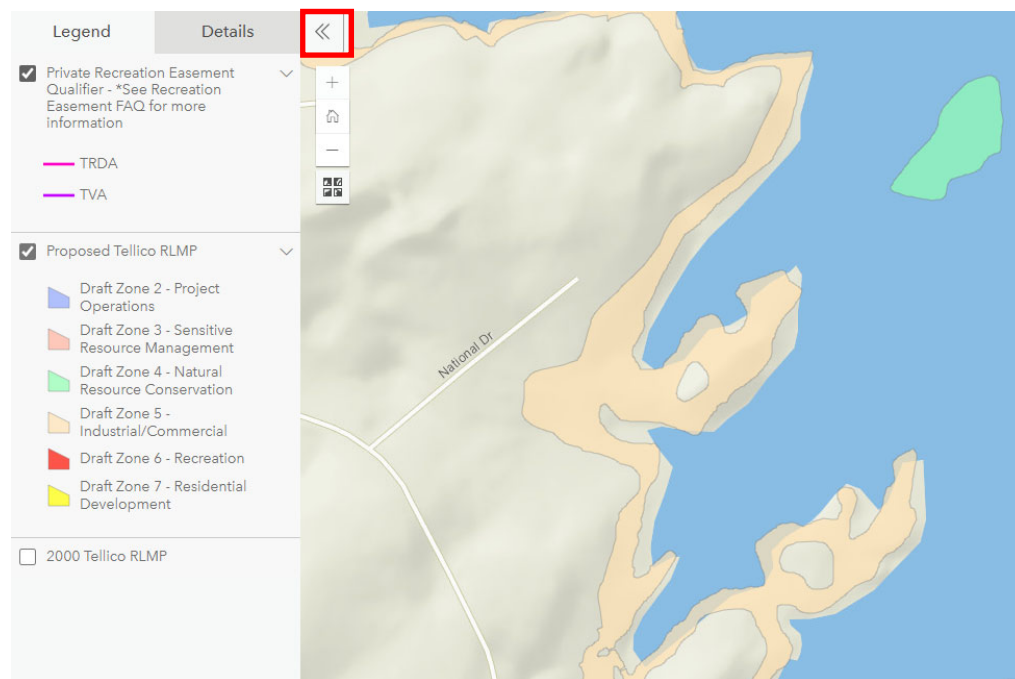
## Legend

In order to understand what the different colors on the map mean, you may access the Legend of the map by clicking the 'Open Legend' icon: »

Once the Legend is open, click on the right-facing arrow beside the layers that you want more information for. You can turn layers off or on by checking or unchecking the box to the left of the description. Please note that the color scheme is the same for the Proposed Tellico Reservoir Land Management Plan layer and the 2000 Tellico Reservoir Land Management Plan layer. It is advisable to only have one of these layers “on” at a time.



The Legend identifies the Land Plan Zones that are visible in the map. Click 'Close Legend' icon (see below) to return to previous display.



## Parcel Information

Use the cursor to move across the map and **click on any colored polygon or line** to display additional information.



You can even use the **Zoom To** button to zoom further into the map.

## Land Plan Zone Definitions

For more information about land plan zone definitions, visit [www.tva.com/landplanzones](http://www.tva.com/landplanzones).

## Full Size Interactive Viewer Map

If the screen appears to be too small, you can also open up the 'Viewer' map in a full sized view by clicking on the following link:

### Maps

Individual parcel allocations can be examined on the maps below:

[Download Map \(PDF\)](#)

[Reservoir Land Management Plan Viewer](#)

Enter your address or place of interest in the search box.

