

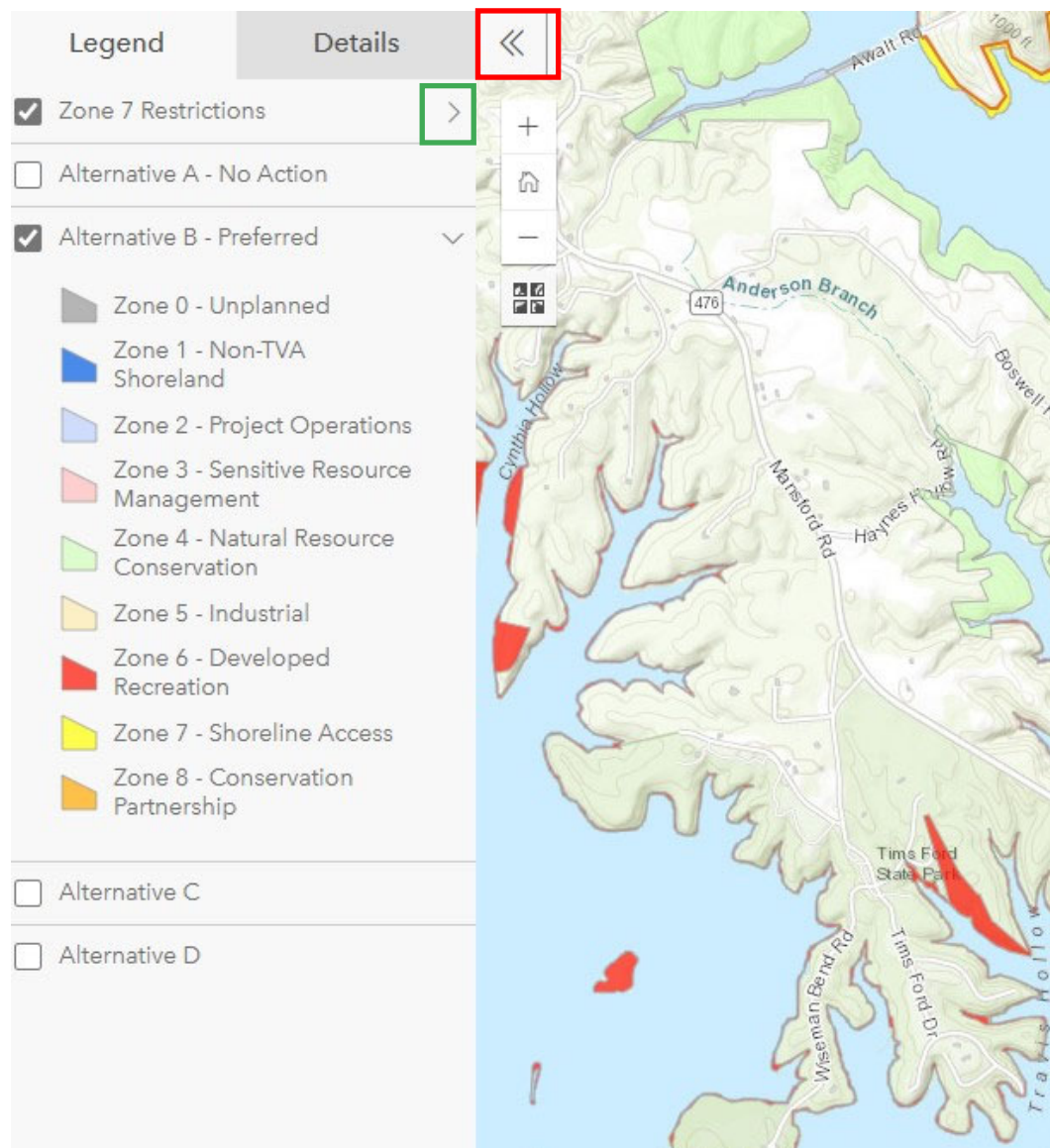
How to Use the Tims Ford RLMP Interactive Map

*Note: Instructions on how to use the map in general are below these instructions.

The Draft Tims Ford RLMP Interactive Map has been set up to allow the user to toggle each Alternative on and off. The default is to have Alternative B and the Zone 7 Restrictions line turned on, but you are welcome to zoom in to a location and see how the different alternatives would affect that location. Parcel information has not been loaded because these are draft options, but you can find more detailed information in the draft Tims Ford RLMP and the draft EA.

In order to toggle the Alternatives on or off you must hit the double arrows beside “Details” (see red box around double arrows). Then you can check the boxes beside the layers you want on or uncheck layers you want turned off.

In order to see the legend for each layer, once the layer has been toggled on, you must click the arrow (see green box) beside that layer (note: all layers except Zone 7 Restrictions have the same legend for simplicity).



How to Use Land Planning Viewer Map

The Interactive Viewer Map allows you to zoom in and out of the map, change the Basemap (aerial photography, topographical map, etc.) and select information about TVA Reservoir Parcels.

Chickamauga Reservoir Land Management Plan

Reservoir Land Management Plans (RLMPs) effectively guide land use approvals, private water use facility permitting, and resource management decisions on TVA-managed public land.

Chickamauga Reservoir is one of eight reservoirs included in the [Multiple RLMPs project](#) which was approved by the TVA Board of Directors on August 23, 2017.

Chickamauga Reservoir is an impoundment of the Tennessee River formed by Chickamauga Dam, which is located at Tennessee River mile 471.0. Chickamauga Reservoir is situated in Bradley, Hamilton, McMinn, Meigs, Polk and Rhea counties in east Tennessee.

Scope

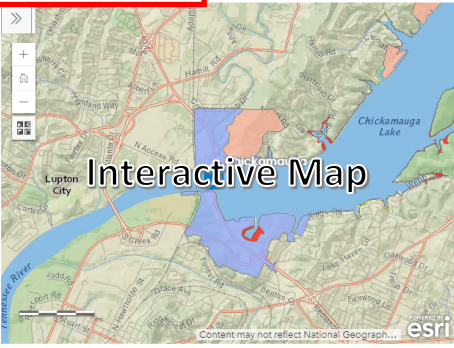
The scope of the Chickamauga RLMP is the 16,061.4 acres of TVA-managed land. The Chickamauga RLMP contains a regional overview, information about the environment around the reservoir and descriptions of each parcel of land. The reservoir property is divided into parcels, and each parcel is assigned a single land use allocation zone. Descriptions of the allowable land uses within each land planning zone are [available here](#).

[Chickamauga Land Management Plan](#)

Maps

Individual parcel allocations can be examined on the maps below:

[Reservoir Land Management Plan Viewer](#)



The image shows a screenshot of a web-based interactive map. The map displays the Chickamauga Reservoir area, including the Tennessee River and surrounding land parcels. A red box highlights the 'Reservoir Land Management Plan Viewer' link. The map interface includes navigation controls like zoom in (+), zoom out (-), and a full-screen button. The text 'Interactive Map' is overlaid on the map area.

Chickamauga Reservoir Facts

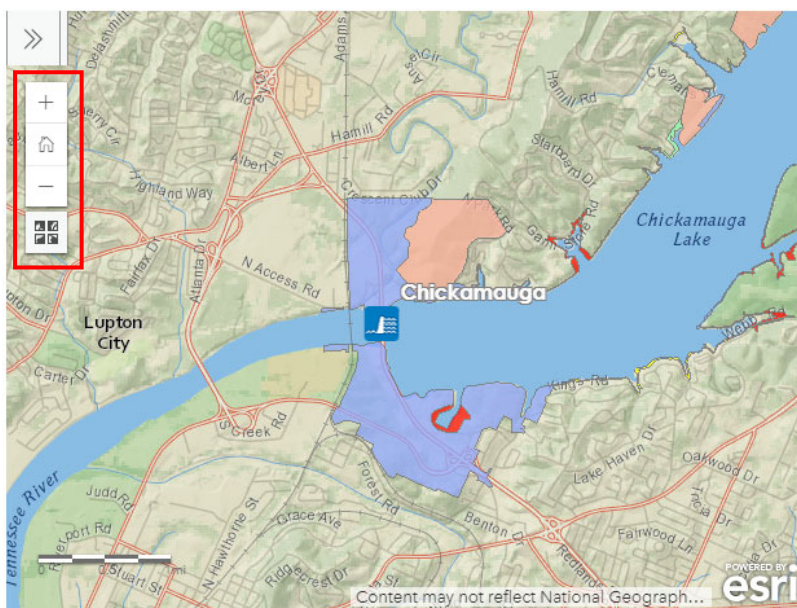
TVA Land: 16,061.04 acres
TVA Parcels: 395
Shoreline: 784 miles
Water Surface: 36,240 acres


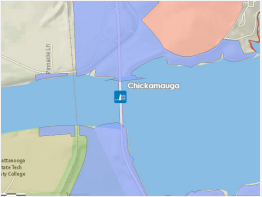

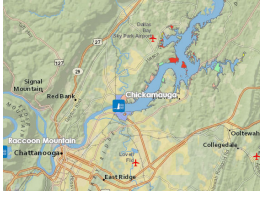

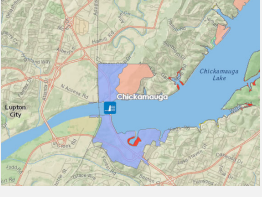

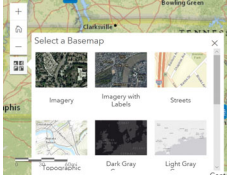
You might also be interested in...

- [Chickamauga Dam](#)
- [TVA Recreation](#)
- [Rules for the Use of TVA Public Lands](#)
- [Shoreline Construction Permits](#)

Viewer Map Navigation

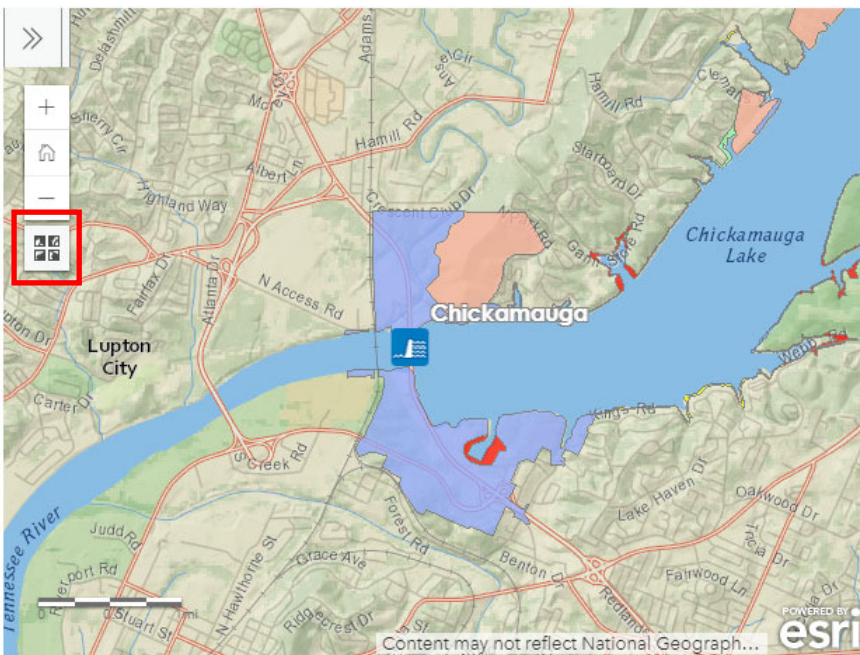
The following tools are used for navigation around the interactive map.



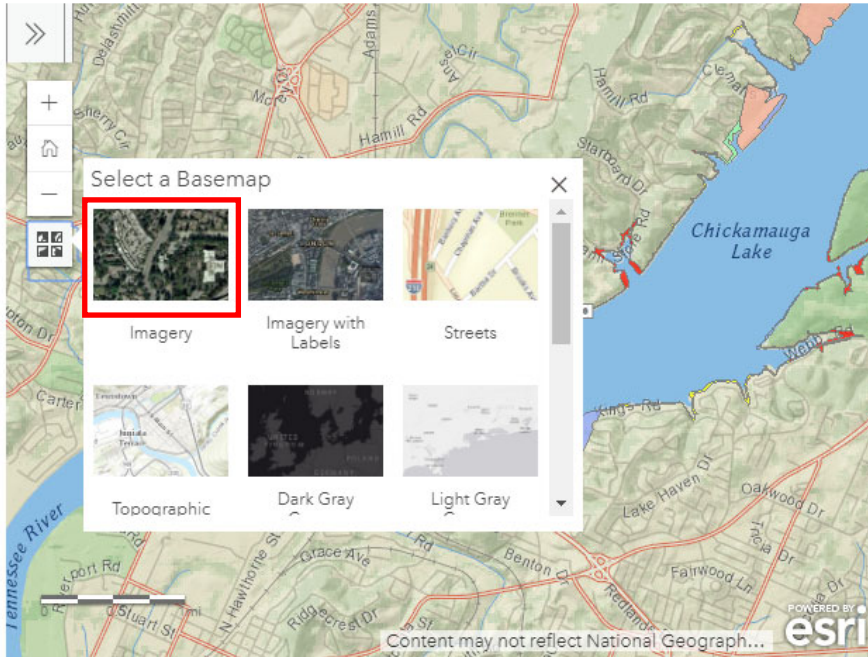
Navigation Tool	Description	Example
	<p>The 'Plus' button zooms the map in to allow you to see more detail in the map</p>	
	<p>The 'Minus' button zooms the map out to allow you to see less detail in the map</p>	
	<p>The 'Home' button takes you back to the default area of the reservoir as it was first loaded on the map</p>	
	<p>The 'Basemap' icon allows you to select different background map options</p>	

Basemap

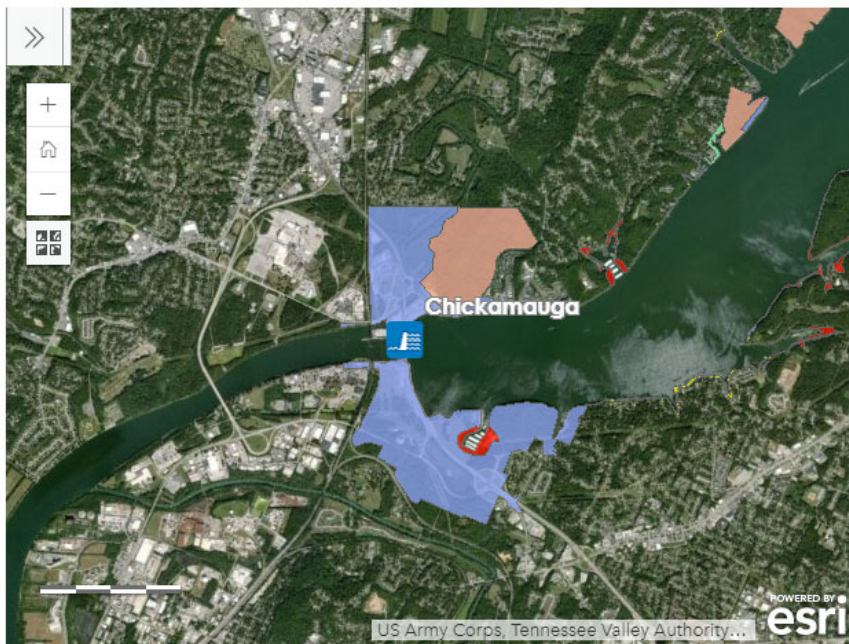
The underlying Basemap (background) can be changed to something more suitable for your needs. Click the 'Basemap' icon to access different Basemap options.



Select a new Basemap to change what you are seeing underneath the map layers.



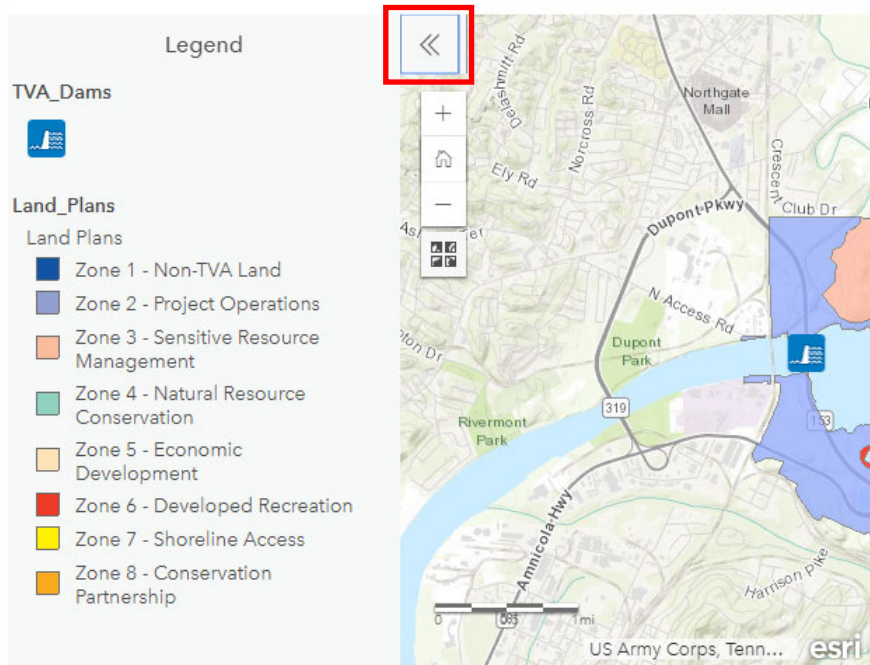
For example, the **Imagery** Basemap is being displayed in the map below:



Legend

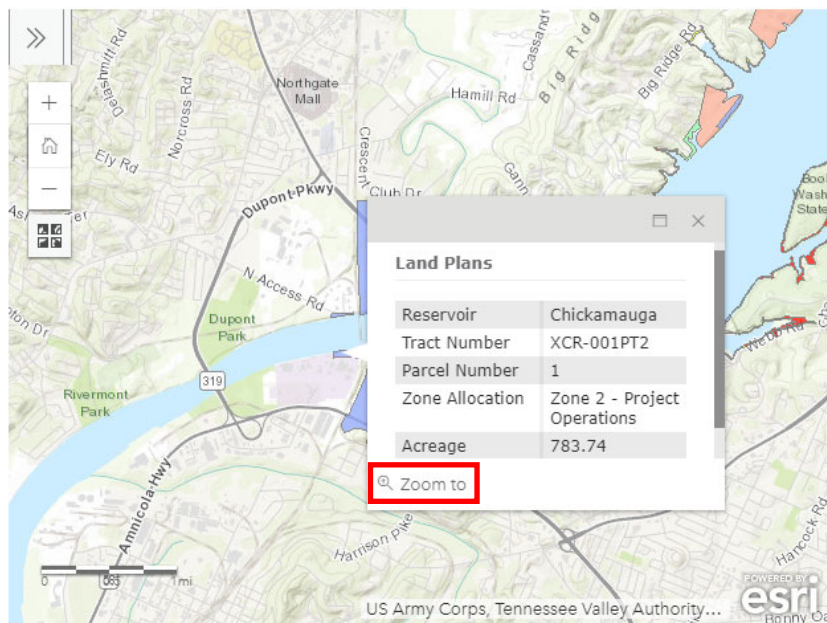
In order to understand what the Land Plan Zone colors mean, you may access the Legend of the map by clicking the 'Open Legend' icon: »

The Legend identifies the Land Plan Zones that are visible in the map. Click 'Close Legend' icon (see below) to return to previous display.



Parcel Information

Use the cursor to move across the map and **click on any colored polygon** to display the following parcel information: Reservoir, TVA Plan Tract Number, Parcel Number, Zone Allocation, and Parcel Acreage.



You can even use the **Zoom To** button to zoom further into the map.

Land Plan Zone Definitions

For more information about land plan zone definitions, visit www.tva.com/landplanzones.

Full Size Interactive Viewer Map

If the screen appears to be too small, you can also open up the 'Viewer' map in a full sized view by clicking on the following link:

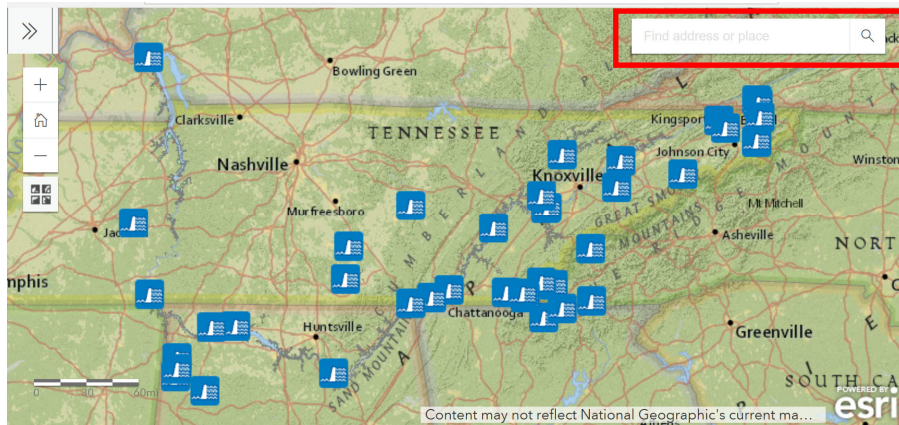
Maps

Individual parcel allocations can be examined on the maps below:


[Download Map \(PDF\)](#)

[Reservoir Land Management Plan Viewer](#)

Enter your address or place of interest in the search box.



OR

Click on a TVA Dam icon  to select it and then you may 'Zoom to' that Reservoir Dam.

