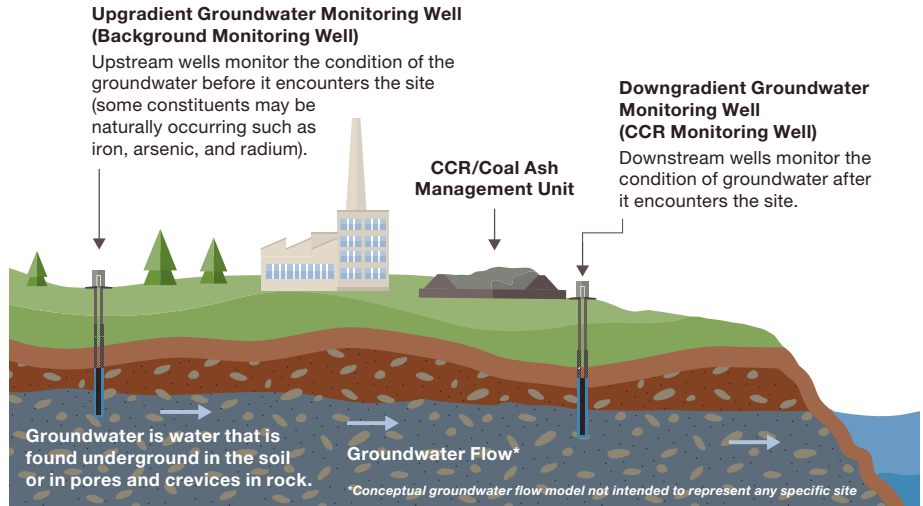


Groundwater Monitoring: Paradise Fossil Plant

Ensuring the protection of water resources

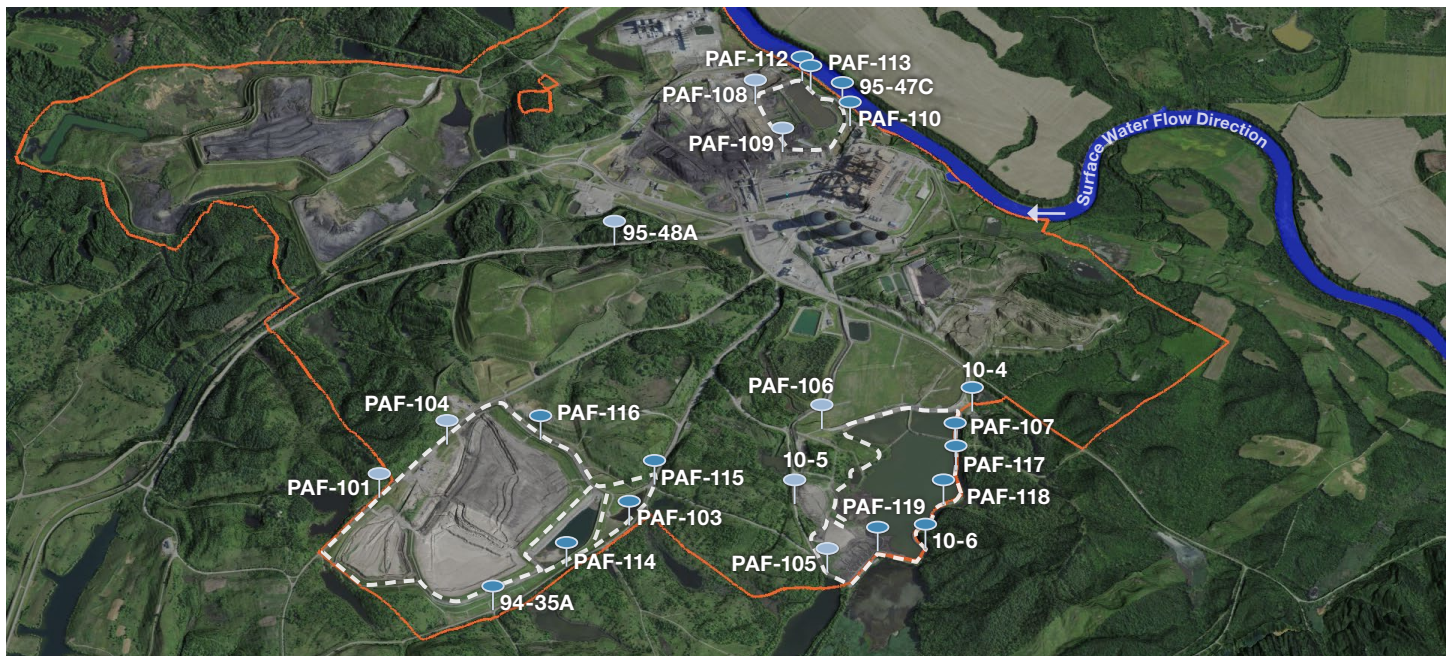
Why We Monitor

As part of our commitment to environmental stewardship and in compliance with state and federal regulations, TVA continues to monitor the groundwater quality at the site to ensure water resources are not impacted by our coal ash management units. This fact sheet summarizes TVA's CCR Rule groundwater monitoring program and provides the most recent results reported under federal regulations. There are more monitoring wells for other monitoring programs at the site which are not included in this fact sheet.



How We Monitor

We maintain a robust network of monitoring wells that we sample regularly for groundwater quality. Many of the constituents in coal ash are naturally occurring in rocks and soil, which makes it important to understand groundwater quality before it reaches the site. That's why we typically install monitoring wells both before and after groundwater reaches the site. We proactively report the results to regulators and post the results on the TVA website.



- Background Monitoring Well
- CCR Monitoring Well
- CCR Unit Subject to CCR Rule
- TVA Property Boundary

Image shown is a rendering, well locations are approximate.



Results of Assessment Monitoring for 2025*

2025		GROUNDWATER QUALITY MONITORING WELL LOCATIONS							
Constituent	GWPS mg/L	Background Wells			CCR Monitoring Wells				
		95-48A	PAF-101	PAF-104	94-35A	PAF-114	PAF-103	PAF-115	PAF-116
Antimony	0.006	●	●	●	●	●	●	●	●
Arsenic	0.011	●	●	●	●	●	●	●	●
Barium	2	●	●	●	●	●	●	●	●
Beryllium	0.004	●	●	●	●	●	●	●	●
Cadmium	0.005	●	●	●	●	●	●	●	●
Chromium	0.1	●	●	●	●	●	●	●	●
Cobalt	0.0834	●	●	●	●	●	●	●	●
Fluoride	4	●	●	●	●	●	●	●	●
Lead	0.015	●	●	●	●	●	●	●	●
Lithium	0.181	●	●	●	●	●	●	●	●
Mercury	0.002	●	●	●	●	●	●	●	●
Molybdenum	0.1	●	●	●	●	●	●	●	●
Rad226+228	5 pCi/L	●	●	●	●	●	●	●	●
Selenium	0.05	●	●	●	●	●	●	●	●
Thallium	0.002	●	●	●	●	●	●	●	●

Color Coding Key

- Monitoring data results are below groundwater protection standards (GWPS)
- Monitoring data results exceed GWPS (TVA completed assessment of corrective measures report)

* The results shown here are representative of the results in the Semiannual Reports submitted on January 9, 2026 and the Annual Groundwater Monitoring and Corrective Action Reports submitted on January 30, 2026 and may not be the most recent documented result.

2025		GROUNDWATER QUALITY MONITORING WELL LOCATIONS						
Constituent	GWPS mg/L	Background Wells			CCR Monitoring Wells			
		95-48A	PAF-108	PAF-109	PAF-110	95-47C	PAF-113	PAF-112
Antimony	0.006	●	●	●	●	●	●	●
Arsenic	0.010	●	●	●	●	●	●	●
Barium	2	●	●	●	●	●	●	●
Beryllium	0.004	●	●	●	●	●	●	●
Cadmium	0.005	●	●	●	●	●	●	●
Chromium	0.1	●	●	●	●	●	●	●
Cobalt	0.137	●	●	●	●	●	●	●
Fluoride	4	●	●	●	●	●	●	●
Lead	0.015	●	●	●	●	●	●	●
Lithium	0.181	●	●	●	●	●	●	●
Mercury	0.002	●	●	●	●	●	●	●
Molybdenum	0.1	●	●	●	●	●	●	●
Rad226+228	5 pCi/L	●	●	●	●	●	●	●
Selenium	0.05	●	●	●	●	●	●	●
Thallium	0.002	●	●	●	●	●	●	●

2025		GROUNDWATER QUALITY MONITORING WELL LOCATIONS									
		Background Wells				CCR Monitoring Wells					
Constituent	GWPS mg/L	95-48A	10-5	PAF-105	PAF-106	PAF-119	10-6	PAF-118	PAF-117	PAF-107	10-4
Antimony	0.006	●	●	●	●	●	●	●	●	●	●
Arsenic	0.014	●	●	●	●	●	●	●	●	●	●
Barium	2	●	●	●	●	●	●	●	●	●	●
Beryllium	0.004	●	●	●	●	●	●	●	●	●	●
Cadmium	0.005	●	●	●	●	●	●	●	●	●	●
Chromium	0.1	●	●	●	●	●	●	●	●	●	●
Cobalt	0.0771	●	●	●	●	●	●	●	●	●	●
Fluoride	4	●	●	●	●	●	●	●	●	●	●
Lead	0.015	●	●	●	●	●	●	●	●	●	●
Lithium	0.175	●	●	●	●	●	●	●	●	●	●
Mercury	0.002	●	●	●	●	●	●	●	●	●	●
Molybdenum	0.1	●	●	●	●	●	●	●	●	●	●
Rad226+228	5 pCi/L	●	●	●	●	●	●	●	●	●	●
Selenium	0.05	●	●	●	●	●	●	●	●	●	●
Thallium	0.002	●	●	●	●	●	●	●	●	●	●

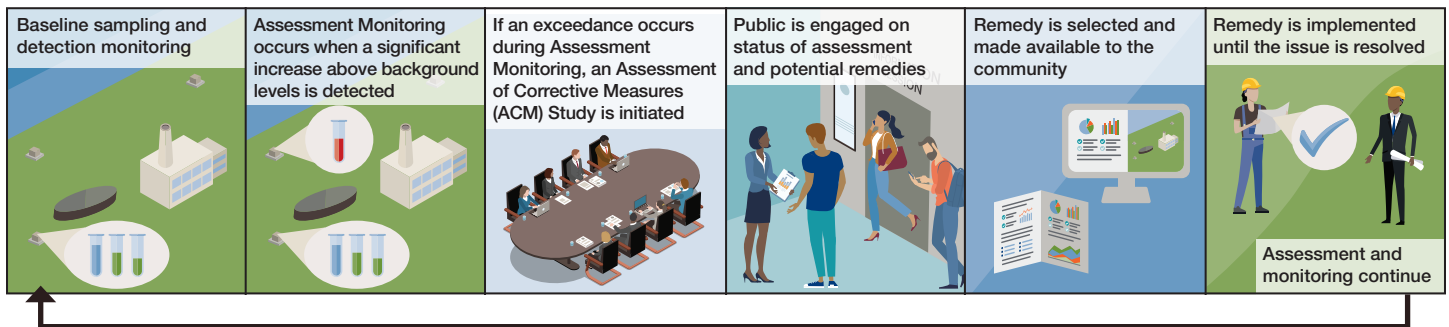
Color Coding Key

- Monitoring data results are below groundwater protection standards (GWPS)
- Monitoring data results exceed GWPS (TVA completed assessment of corrective measures report)

* The results shown here are representative of the results in the Semiannual Reports submitted on January 9, 2026 and the Annual Groundwater Monitoring and Corrective Action Reports submitted on January 30, 2026 and may not be the most recent documented result.

Monitoring and Remedy Process Under Federal Regulations

Below are the steps that TVA takes to understand groundwater conditions and resolve any issues that are detected as a part of our robust monitoring.



Should action be required to address an issue, the public is notified and corrective measures are taken. As the issue is resolved, monitoring continues. This is a cycle that continues as part of our robust monitoring program.

Next Steps

TVA will continue to monitor and assess groundwater testing results and take the steps necessary to preserve and protect the quality of the environment and surrounding community.

TVA will not waver from our commitment to protecting water resources.