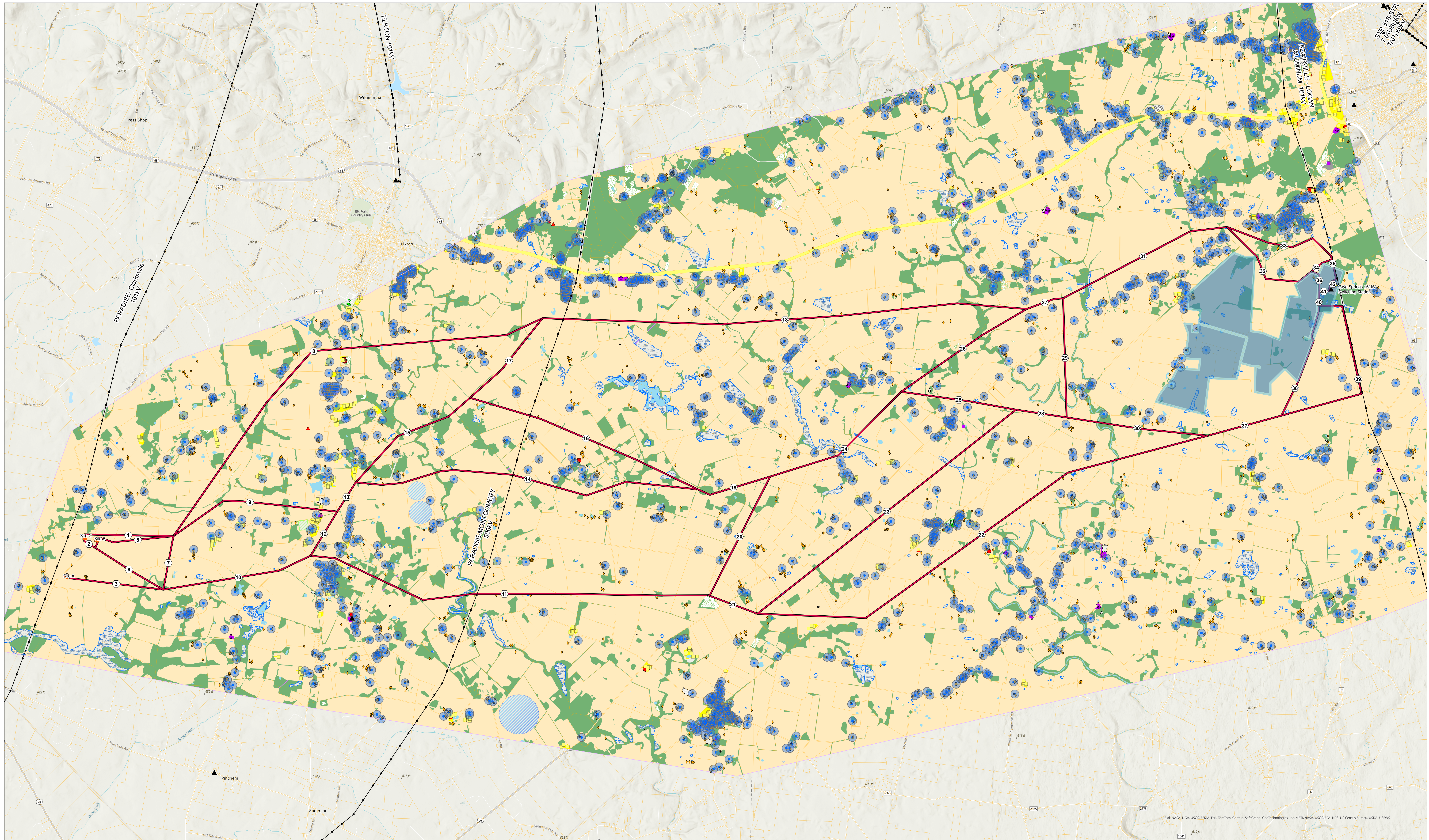
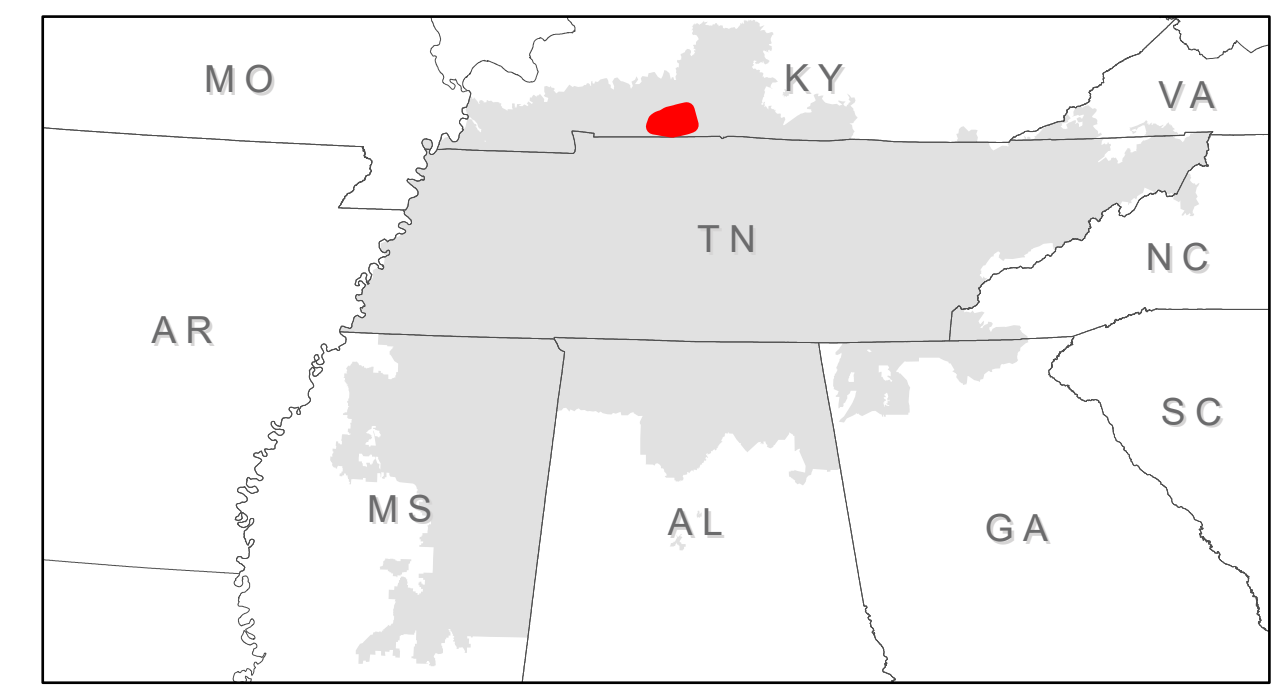




Kentucky Area Improvement Phase II Proposed Transmission Project



Legend

- | | | | | | | | | |
|----------------------------------|--------------------------------------|-------------|-----------------------------|---------------------------------------|---------------------|--------------------------------|--|----------------|
| Alternative Routes | Existing Transmission Structures | Parcels | Radio Tower | Commercial | Residential | Substation | Industrial | Communication |
| Proposed Switching Station Sites | Existing Transmission Lines | Water Tank | School | Barn | Major Highway (ROW) | Water Tank | Park | Religious |
| Existing Transmission Stations | Cave Springs 161kV Switching Station | Residential | Church | Strip-mines, Quarries and Borrow Pits | Junkyard | Center pivot irrigation system | Floriculture; Orchards, Vineyards, Nurseries | Pipeline (ROW) |
| | | Industrial | Industrial, Gas or Oil Tank | Race Course | | Cemetery | Existing Solar Farm | |

Esri, NASA, NGA, USGS, FEMA, Esri, TomTom, Garmin, SafeGraph, GeoTechnology, Inc., METRNAS, USGS, ENR, NPS, US Census Bureau, USDA, USFWS