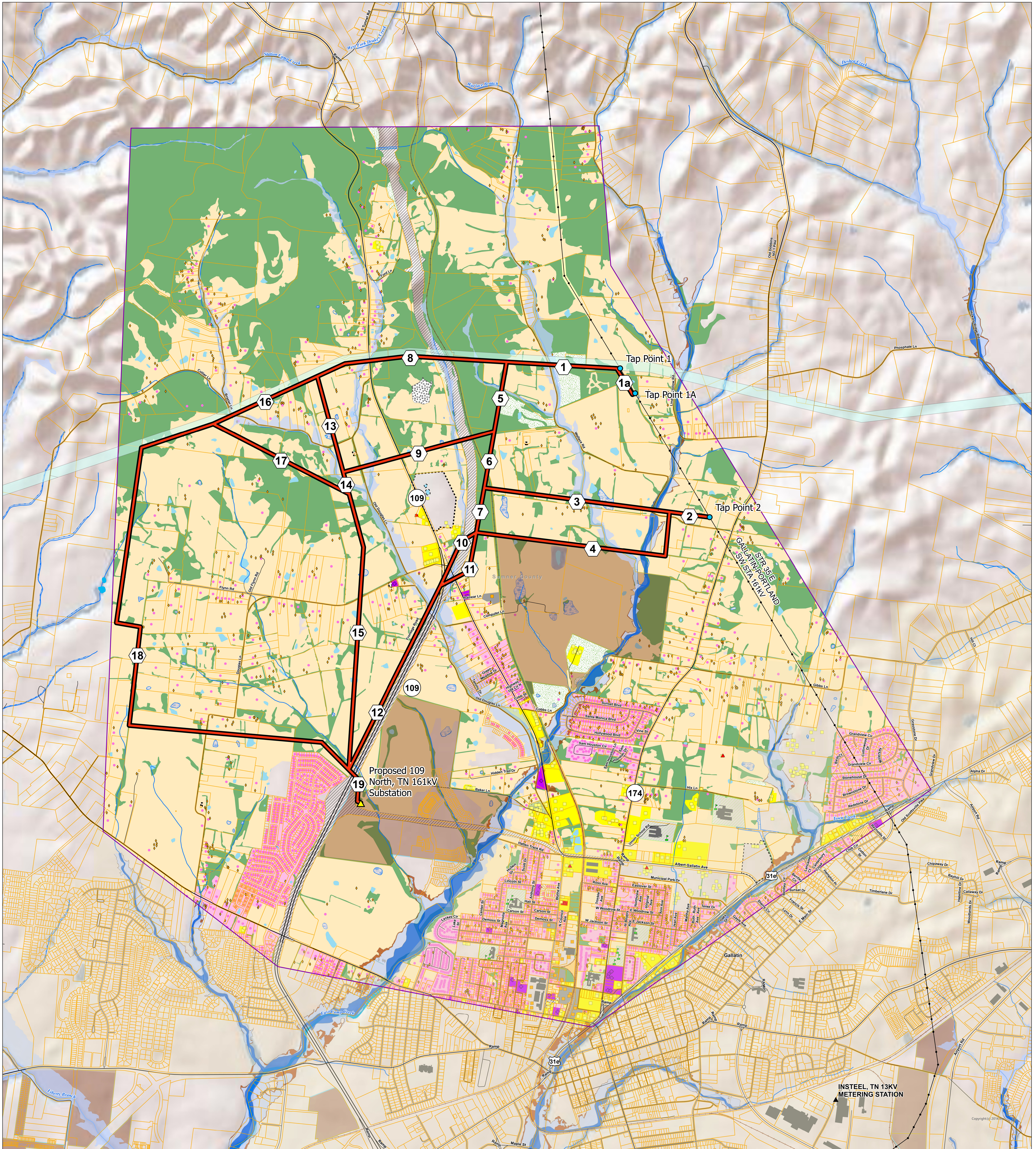
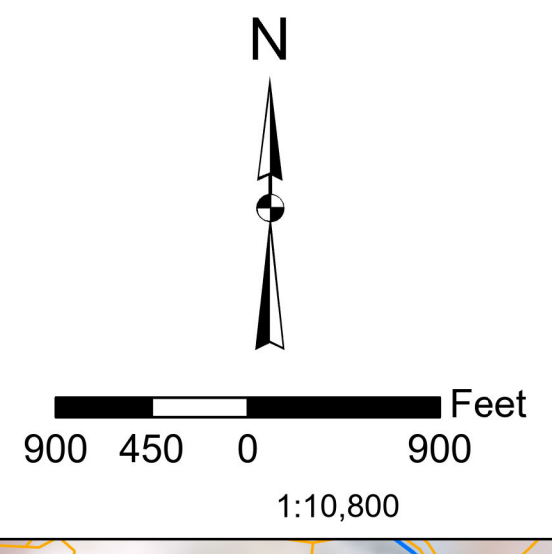
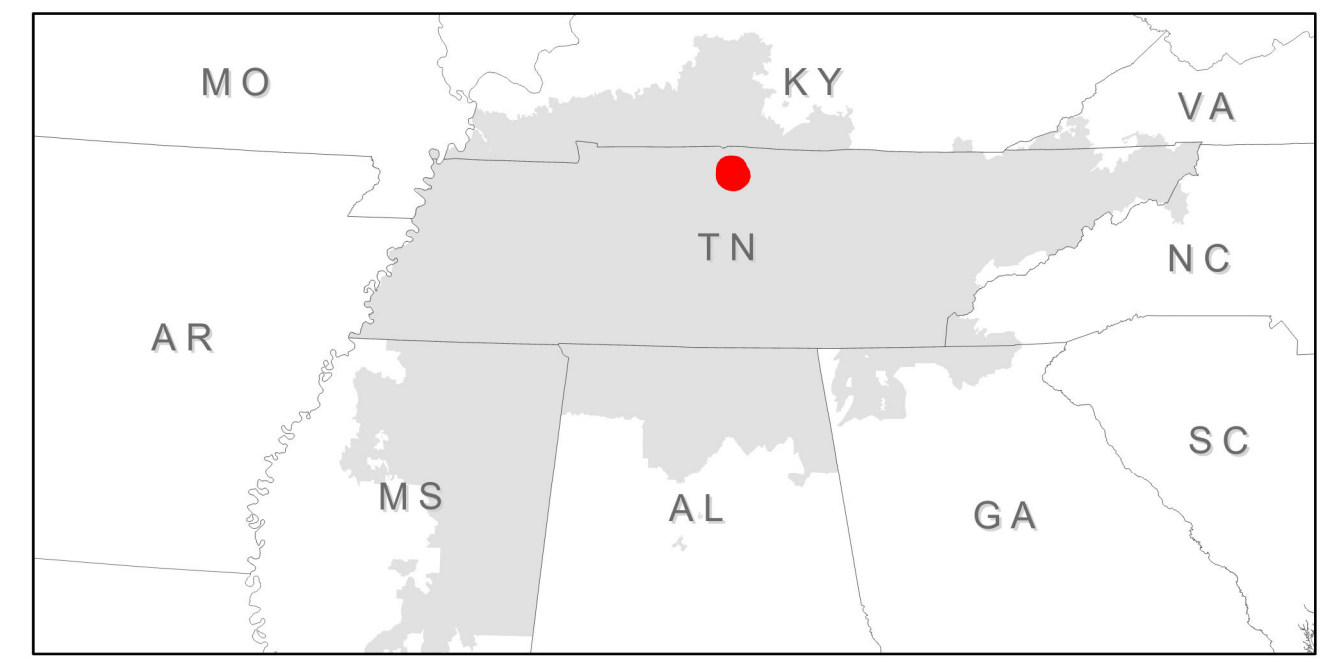




# 109 North, TN Proposed Transmission Project



- Legend**
- |                         |                      |                                |             |                             |                                    |  |                |               |                          |
|-------------------------|----------------------|--------------------------------|-------------|-----------------------------|------------------------------------|--|----------------|---------------|--------------------------|
| Alternative Routes      | Parcels              | Ephemeral, Intermittent Stream | Dwelling    | School                      | Residential                        | Forest                                       | Pipeline (ROW) | Wetland       | FEMA 100 Year Flood Zone |
| Transmission Stations   | County Boundary      | Perennial Stream               | Barn        | Cemetery                    | Commercial, Service, Institutional | Floriculture; Orchards, Vineyards, Nurseries | Railroad       | FEMA Floodway | FEMA 500 Year Flood Zone |
| Transmission Structures | Econ. Dev. Ind. Site |                                | Church      | Communication               | Educational                        | Industrial                                   | Religious      |               |                          |
| Transmission Lines      |                      |                                | Commercial  | Electric Transmission (ROW) | Major Highway (ROW)                | Junkyard                                     | Shrub/Scrub    |               |                          |
| TVA Existing Easement   |                      |                                | Industrial  |                             | Openland                           | Strip-mines, Quarries and Borrow Pits        | Water          |               |                          |
|                         |                      |                                | Radio Tower |                             |                                    |  |                |               |                          |