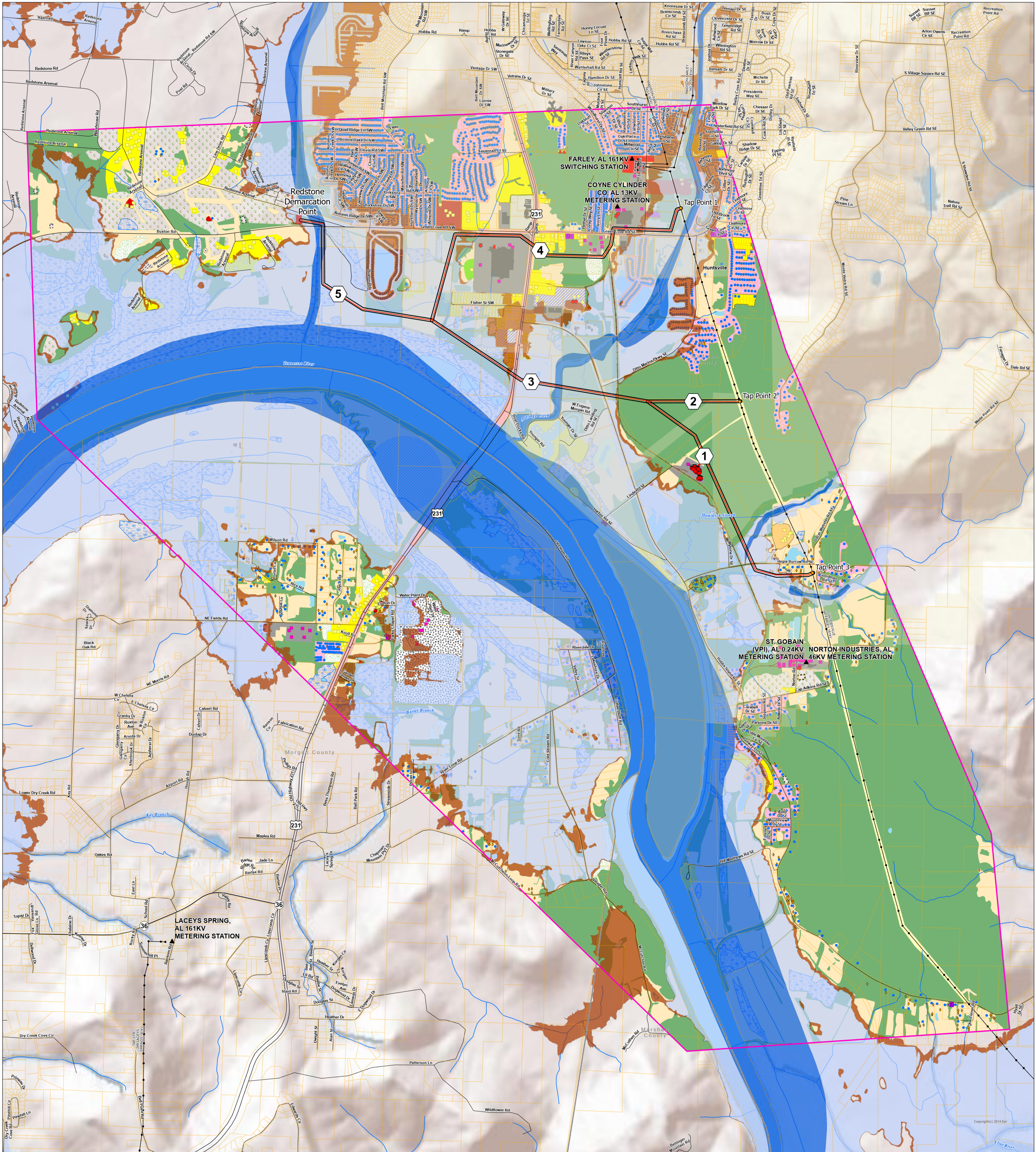
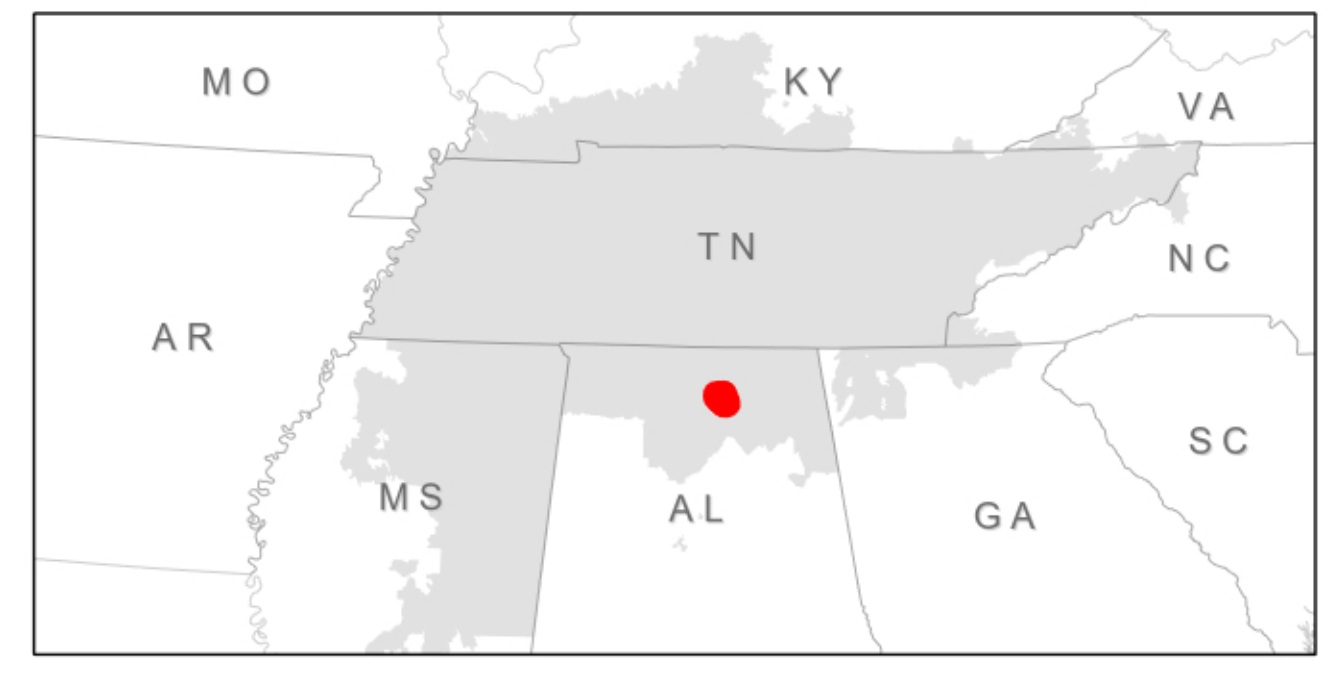
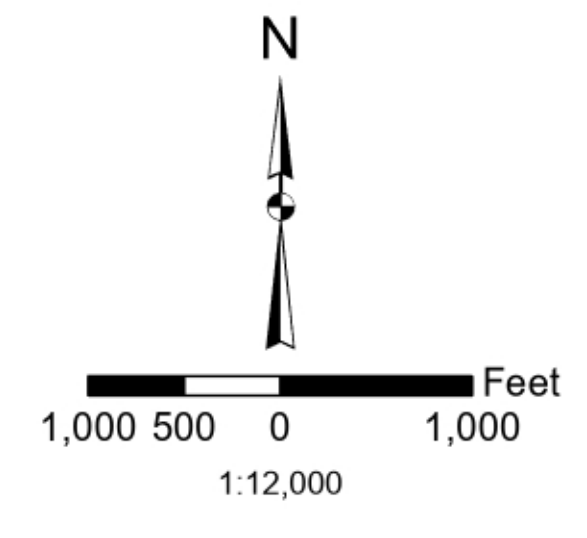


# TVA Redstone Arsenal No. 3, AL Proposed Transmission Project



- |  |  |   |  |  |
|--|--|---|--|--|
| <ul style="list-style-type: none"> <li>Alternative Routes</li> <li>Transmission Stations</li> <li>Transmission Structures</li> <li>Transmission Lines</li> </ul> | <ul style="list-style-type: none"> <li>Parcels</li> <li>County Boundary</li> <li>Econ. Dev. Ind. Site</li> <li>Scaled Buildings</li> </ul> | <ul style="list-style-type: none"> <li>Perennial Stream</li> <li>Intermittent Stream</li> <li>Barn</li> <li>Church</li> <li>Commercial</li> <li>Dwelling</li> <li>Industrial</li> <li>Industrial, Gas or Oil Tank</li> <li>Radio Tower</li> <li>School</li> <li>Water Tank</li> </ul> | <ul style="list-style-type: none"> <li>Athletic Field</li> <li>Center pivot irrigation system</li> <li>Strip-mines, Quarries and Borrow Pits</li> <li>Seeding/Sapling</li> <li>Campground</li> <li>Race Course</li> <li>Junkyard</li> <li>Water Treatment</li> <li>Water Tank</li> <li>Barren or Disturbed Land</li> <li>Park</li> <li>Educational</li> <li>Major Highway (ROW)</li> <li>Religious</li> <li>Communication</li> <li>Substation</li> <li>Planned Residential Development</li> <li>Electric Transmission (ROW)</li> <li>Industry</li> <li>Cemetery</li> </ul> | <ul style="list-style-type: none"> <li>Residential</li> <li>Street/Scrub</li> <li>Plantation</li> <li>Commercial/Service/Institutional</li> <li>Water</li> <li>Openland</li> <li>Wetland</li> <li>Forest</li> <li>FEMA 100 Year Flood Zone</li> <li>FEMA Floodway</li> <li>FEMA 500 Year Flood Zone</li> </ul> |
|--|--|---|--|--|