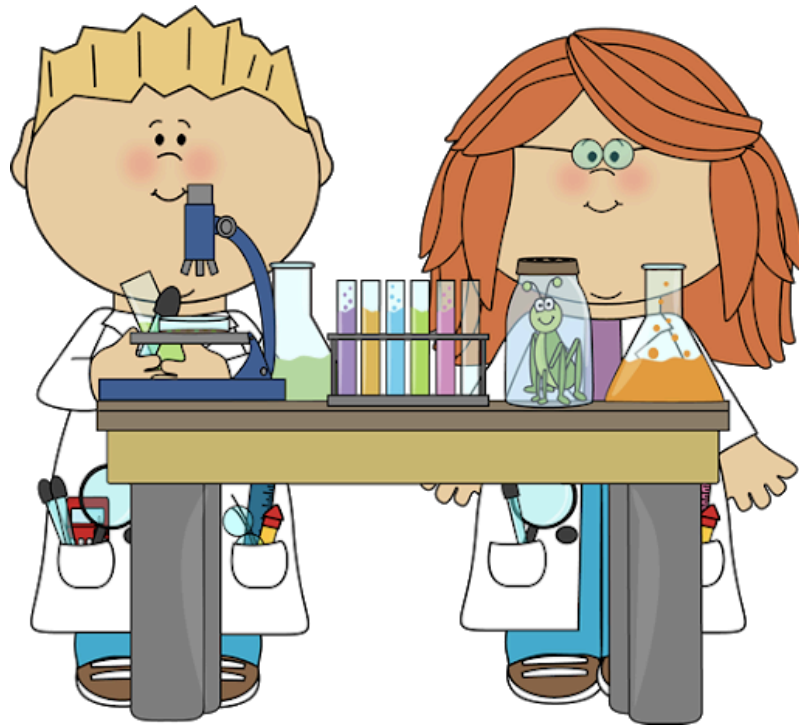
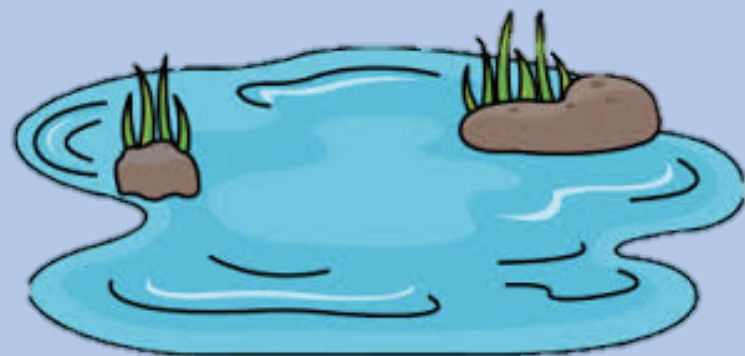


# Aquatic Ecologist Notebook



Aquatic Ecologist's Name: \_\_\_\_\_



Directions: Today you will measure 4-5 mystery containers. You must find a unit in the materials to measure it with that is reasonable. Estimate each capacity first before you fill the container. Available units are listed below to help you!

**Metric Units of Capacity**

Milliliters (mL) about a drop of water  
Liters (L)  
1,000 mL = 1 L

**US Customary Units of Capacity**

Gallon (G)  
Teaspoon (tsp.)  
Quart (Q)  
Tablespoon (tbsp.) Pint (P) Cup (c)

MYSTERY CONTAINER # \_\_\_\_\_

What unit will you use to fill the container? \_\_\_\_\_

Which system is that unit in? (circle one) metric US Customary

Your Estimate of the container \_\_\_\_\_

Actual Capacity \_\_\_\_\_

MYSTERY CONTAINER # \_\_\_\_\_

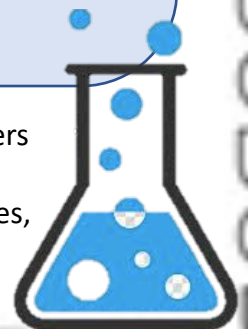
What unit will you use to fill the container? \_\_\_\_\_

Which system is that unit in? (circle one) metric US Customary

Your Estimate of the container \_\_\_\_\_

Actual Capacity \_\_\_\_\_

3.MD.A.2 Measure the mass of liquid volume using standard units of milliliters (ml), and liters (l). Estimate the liquid volume using benchmarks.  
A. Solve problems involving measurement and estimation of intervals of time, liquid volumes, and masses of objects.



MYSTERY CONTAINER # \_\_\_\_\_

What unit will you use to fill the container? \_\_\_\_\_

Which system is that unit in? (circle one) metric US Customary

Your Estimate of the container \_\_\_\_\_

Actual Capacity \_\_\_\_\_

MYSTERY CONTAINER # \_\_\_\_\_

What unit will you use to fill the container? \_\_\_\_\_

Which system is that unit in? (circle one) metric US Customary

Your Estimate of the container \_\_\_\_\_

Actual Capacity \_\_\_\_\_

Self Check- How confident do you feel about estimation and measurement?  
Circle the one that applies to you

1. I feel really confident, and could probably help a friend
2. I need a little more help
3. Help! I'm lost!



Name: \_\_\_\_\_

# Aquatic Ecologist Research Questions

1. What is pH?

---

---

2. Why is pH important in water?

---

---

3. What should pH be in pond water?

---

---

4. What do I do if my pond water pH is too low?

---

---

5. What do I do if my pond water pH is too high?

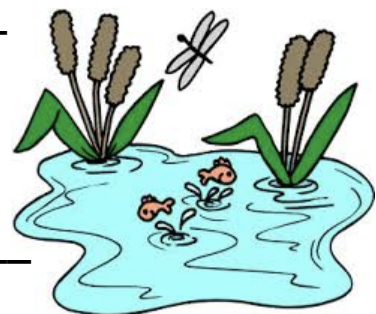
---

---

6. What animals live in a pond?

---

---



7. How does pH level affect pond animals?

---

---

8. How do humans affect pH in pond water?

---

---

---

---



# Brainstorm

